

Product datasheet for **RC223064**

MLX (NM_198205) Human Tagged ORF Clone

Product data:

Product Type:	Expression Plasmids
Product Name:	MLX (NM_198205) Human Tagged ORF Clone
Tag:	Myc-DDK
Symbol:	MLX
Synonyms:	bHLHd13; MAD7; MXD7; TCFL4; TF4
Mammalian Cell Selection:	Neomycin
Vector:	pCMV6-Entry (PS100001)
E. coli Selection:	Kanamycin (25 ug/mL)
ORF Nucleotide Sequence:	>RC223064 representing NM_198205 Red=Cloning site Blue=ORF Green=Tags(s)

TTTTGTAATACGACTCACTATAGGGCGGCCGGAATTCGTCGACTGGATCCGGTACCGAGGAGATCTGCCGCC**CGATCGCC**

ATGACGGAGCCGGGCGCCTCTCCGAGGACCCTTGGGTCAAGGTGGAGTATGCCTACAGCGACAACAGCC
TGGACCCCGATGATGAGGACAGTGATTACCACCAGGAGGCCTACAAGGAGTCTACAAAGACCGGCGCG
GCGCGCACACTCAGGCTGAGCAGAAGAGGAGGGACGCCATCAAGAGAGGCTATGATGACCTTCAGACC
ATCGTCCCCTGCCAGCAGCAGGACTTCTCCATTGGCTCCAAAAGCTCAGCAAAGCCATCGTTCTAC
AAAAGACCATTGACTACATTCAGTTTTTGCACAAGGAGAAGAAAAGCAGGAGGAGGAGGTGCCACGTT
ACGCAAGGATGTCACCGCCCTAAAGATCATGAAAGTGAATATGAGCAGATTGTGAAGGCACACCAGGAC
AACCCCATGAAGGGGAGGACCAGGTCTCTGACCAGGTCAAGTTCAACGTGTTTCAAGGCATCATGGATT
CCCTGTTCCAGTCCTTCAATGCCTCCATCTCAGTGGCCAGCTTCCAGGAGCTGTCAGCGTGTGCTTTCAG
CTGGATCGAGGAGCACTGTAAGCCTCAGACCCTGCGGGAGATTGTGATTGGCGTCTGCACCAATTGAAA
AACCAGCTTTAC

ACGCGTACGCGGCGCTCGAGCAGAACTCATCTCAGAAGAGGATCTGGCAGCAAATGATATCCTGGATT
ACAAGGATGACGACGATAAGGTTTAA



[View online »](#)

Protein Sequence: >RC223064 representing NM_198205
Red=Cloning site Green=Tags(s)

MTEPGASPEDPWVKVEYAYSNSLDPDDESDYHQEAYKESYKDRRRRAHTQAEQKRRDAIKRGYDDLQT
 IVPTCQQQDFSIGSQKLSKAIVLQKTIDYIQFLHKEKKKQEEVSTLRKDVLTALKIMKVNYEQIVKAHQD
 NPHEGEDQVSDQVKFNVFQGIMDSLFQSFNASISVASFQELSACVFSWIEEHCKPQTLREIVIGVLHQLK
 NQLY

TRTRPLEQKLISEEDLAANDILDYKDDDDKV

Chromatograms: https://cdn.origene.com/chromatograms/ja1433_b06.zip

Restriction Sites: SgfI-MluI

Cloning Scheme:



ACCN: NM_198205

ORF Size: 642 bp

OTI Disclaimer: The molecular sequence of this clone aligns with the gene accession number as a point of reference only. However, individual transcript sequences of the same gene can differ through naturally occurring variations (e.g. polymorphisms), each with its own valid existence. This clone is substantially in agreement with the reference, but a complete review of all prevailing variants is recommended prior to use. [More info](#)

OTI Annotation: This clone was engineered to express the complete ORF with an expression tag. Expression varies depending on the nature of the gene.

Components: The ORF clone is ion-exchange column purified and shipped in a 2D barcoded Matrix tube containing 10ug of transfection-ready, dried plasmid DNA (reconstitute with 100 ul of water).

Reconstitution Method:

1. Centrifuge at 5,000xg for 5min.
2. Carefully open the tube and add 100ul of sterile water to dissolve the DNA.
3. Close the tube and incubate for 10 minutes at room temperature.
4. Briefly vortex the tube and then do a quick spin (less than 5000xg) to concentrate the liquid at the bottom.
5. Store the suspended plasmid at -20°C. The DNA is stable for at least one year from date of shipping when stored at -20°C.

RefSeq: [NM_198205.1](#), [NP_937848.1](#)

RefSeq Size: 2316 bp

RefSeq ORF: 645 bp

Locus ID: 6945

UniProt ID: [Q9UH92](#)

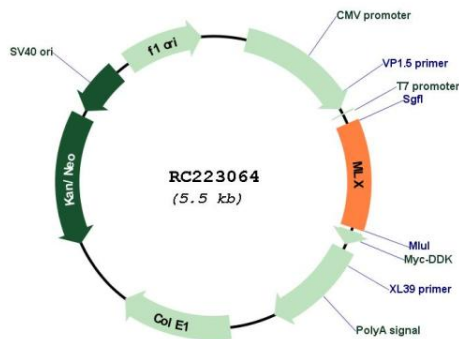
Cytogenetics: 17q21.2

Protein Families: Druggable Genome, Transcription Factors

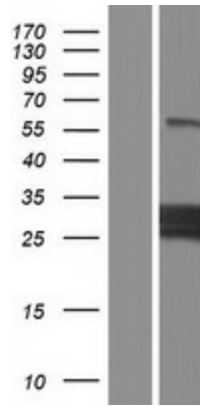
MW: 24.7 kDa

Gene Summary: The product of this gene belongs to the family of basic helix-loop-helix leucine zipper (bHLH-Zip) transcription factors. These factors form heterodimers with Mad proteins and play a role in proliferation, determination and differentiation. This gene product may act to diversify Mad family function by its restricted association with a subset of the Mad family of transcriptional repressors, namely, Mad1 and Mad4. Alternatively spliced transcript variants encoding different isoforms have been identified for this gene. [provided by RefSeq, Jul 2008]

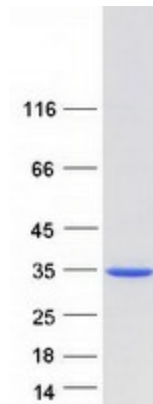
Product images:



Circular map for RC223064



Western blot validation of overexpression lysate (Cat# [LY404978]) using anti-DDK antibody (Cat# [TA50011-100]). Left: Cell lysates from untransfected HEK293T cells; Right: Cell lysates from HEK293T cells transfected with RC223064 using transfection reagent MegaTran 2.0 (Cat# [TT210002]).



Coomassie blue staining of purified MLX protein (Cat# [TP323064]). The protein was produced from HEK293T cells transfected with MLX cDNA clone (Cat# RC223064) using MegaTran 2.0 (Cat# [TT210002]).