

Product datasheet for **RC223061**

CD10 (MME) (NM_007287) Human Tagged ORF Clone

Product data:

Product Type:	Expression Plasmids
Product Name:	CD10 (MME) (NM_007287) Human Tagged ORF Clone
Tag:	Myc-DDK
Symbol:	CD10
Synonyms:	CALLA; CD10; CMT2T; NEP; SCA43; SFE
Mammalian Cell Selection:	Neomycin
Vector:	pCMV6-Entry (PS100001)
E. coli Selection:	Kanamycin (25 ug/mL)



[View online »](#)

**ORF Nucleotide
Sequence:**

>RC223061 ORF sequence

Red=Cloning site Blue=ORF Green=Tags(s)

 TTTTGTAAACGACTCACTATAGGGCGGCCGGAATTCGTCGACTGGATCCGGTACCGAGGAGATCTGCC
GCC**CGGATCGCC**

 ATGGGCAAGTCAGAAAGTCAGATGGATATAACTGATATCAACACTCCAAAGCCAAAGAAGAAACAGCGAT
GGACTCCACTGGAGATCAGCCTCTCGGTCTTGCTCTGCTCCTCACCATCATAGCTGTGACAATGATCGC
ACTCTATGCAACCTACGATGATGGTATTTGCAAGTCATCAGACTGCATAAAATCAGCTGCTCGACTGATC
CAAAACATGGATGCCACCACTGAGCCTTGACAGACTTTTTCAAATATGCTTGCGGAGGCTGGTTGAAAC
GTAATGTCATTCCCGAGACCAGCTCCCGTTACGGCAACTTTGACATTTTAAGAGATGAAGTAGAAGTCGT
TTTGAAAGATGTCCTTCAAGAACCACAACTGAAGATATAGTAGCAGTGCAGAAAGCAAAAGCATTGTAC
AGGTCTTGATAAATGAATCTGCTATTGATAGCAGAGGTGGAGAACCTCTACTCAAAGTTACCAGACA
TATATGGGTGGCCAGTAGCAACAGAAAAGTGGAGCAAAAATATGGTGCTTCTTGACAGCTGAAAAAGC
TATTGCACAACTGAATTCTAAATATGGGAAAAAGTCTTATTAATTTGTTTGTGGCACTGATGATAAG
AATTCTGTGAATCATGTAAATCATATTGACCAACCTCGACTTGGCTCCCTTCTAGAGATTACTATGAAT
GCACTGGAATCTATAAGAGGCTTGACAGCATATGTGGATTTTATGATTCTGTGGCCAGATTGATTCTG
TCAGGAAGAAAGATTGCCCATCGATGAAAACAGCTTGCTTTGGAATGAATAAAGTTATGGAATTGGAA
AAAGAAATTGCCAATGCTACGGCTAAACCTGAAGATCGAATGATCCAATGCTTCTGTATAACAAGATGA
CATTGGCCAGATCCAAAATACTTTCACTAGAGATCAATGGGAAGCCATTAGCTGGTTGAATTTAC
AAATGAAATCATGTCAACTGTGAATATTAGTATTACAAATGAGGAAGATGTGGTTGTTTATGCTCCAGAA
TATTTAACCAAACTTAAGCCATTCTTACCAAAATTTCTGCCAGAGATCTTCAAATTTAATGTCTGGA
GATTCATAATGGATCTTGTAAGCAGCCTCAGCCGAACCTACAAGGAGTCCAGAAATGCTTCCGCAAGGC
CCTTTATGGTACAACCTCAGAAACAGCAACTTGGAGACGTTGTGCAAACTATGTCAATGGGAATATGGAA
AATGCTGTGGGAGGCTTTATGTGGAAGCAGCATTGCTGGAGAGAGTAAACATGTGGTCGAGGATTTGA
TTGCACAGATCCGAGAAGTTTTTATTCAGACTTTAGATGACCTCACTTGGATGGATGCCGAGACAAAAA
GAGAGCTGAAGAAAAGGCCTTAGCAATTAAGAAAAGGATCGGCTATCCTGATGACATTGTTTCAAATGAT
AACAACTGAATAATGAGTACCTCGAGTTGAACACAAAGAAGATGAATACTTCGAGAACATAATTCAA
ATTTGAAATTCAGCCAAAGTAACAACCTGAAGAAGCTCCGAGAAAAGGTGGACAAAGATGAGTGGATAAG
TGGAGCAGCTGTAGTCAATGCATTTTACTCTTCAGGAAGAAATCAGATAGTCTTCCAGCCGGCATTCTG
CAGCCCCCTTTTATGTGCCAGCAGTCCAACCTATTGAACATATGGGGCATCGGCATGGTCATAGGAC
ACGAAATCACCCATGGCTTCGATGACAATGGCAGAACTTTAACAAAGATGGAGACCTCGTTGACTGGTG
GACTCAACAGTCTGCAAGTAACTTTAAGGAGCAATCCAGTGCATGGTGTATCAGTATGGAACTTTTCC
TGGGACCTGGCAGGTGGACAGCACCTTAATGGAATTAATACACTGGGAGAAAACATTGCTGATAATGGAG
GTCTTGGTCAAGCATACAGAGCCTATCAGAATTATTAATAAAGAATGGCGAAGAAAAATTACTTCTGG
ACTTGACCTAAATCACAAACAACTATTTTCTTGAACCTTGCACAGGTGTGGTGTGGAACCTATAGGCCA
GAGTATGCGGTAACTCCATTAACACAGATGTGCACAGTCCAGGCAATTCAGGATTATTGGGACTTTGC
AGAAGTCTGCAGAGTTTTCAGAAAGCCTTCACTGCCGCAAGAATTCATACATGAATCCAGAAAAGAAGTG
CCGGGTTTGG

ACGCGTACGCGGCGCTCGAGCAGAACTCATCTCAGAAGAGGATCTGGCAGCAATGATATCCTGGATT
ACAAGGATGACGACGATAAGGTTTAA

Protein Sequence: >RC223061 protein sequence
 Red=Cloning site Green=Tags(s)

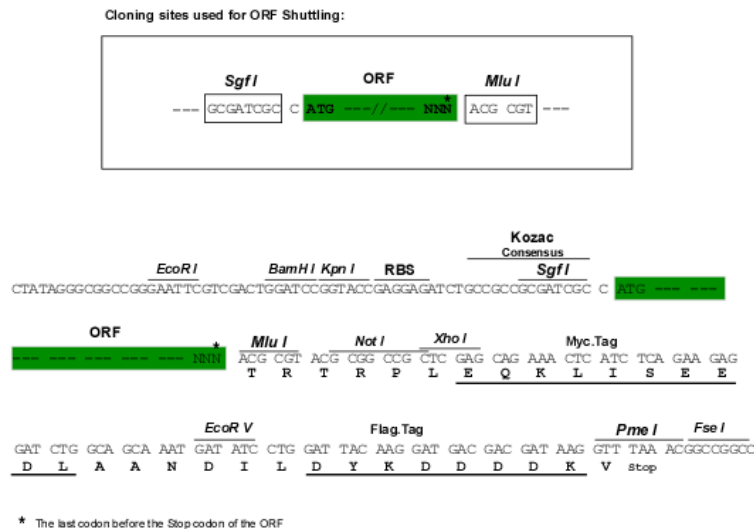
MGKSESQMDITDINTPKPKKKQRWTPLEISLSVLVLLLTIIAVTMIALYATYDDGICKSSDCIKSAARLI
 QNM DATTEPCTDFFKYACGGWLKRNVIPETSSRYGNFDILRDELEVVLKDVLPQPKTEDIVAVQKAKALY
 RSCINESAIDSRGGEPLKLLPDIYGWPVATENWEQKYGASWTAEKAIQNLNSKYGKKVLINLFVGTDDK
 NSVNHVIHIDQPRGLPSRDYECTGIYKEACTAYVDFMISVARLIRQEERLPIDENQLALEMNKVMELE
 KEIANATAKPEDRNDPMLLYNKMTLAQIQNNFSLRINGKPF SWLNFTNEIMSTVNISITNEEDVVVYAPE
 YLTKLKPI LTKYSARDLQNLMSWRFIMDLVSSLRSTYKESRNAFRKALYGTTSATWRRANCANYVNGNME
 NAVGRLYVEAAFAGESKHVVEDLIAQIREVFIQTLDDL TWMDAETKKRAEEKALAIKERIGYPDDIVSND
 NKLNNYELENYKEDEYFENIIQNLKFSQSKQLKKLREKVDKDEWISGAAYVNAFYSSGRNQIVFPAGIL
 QPPFFSAQQSNSLNYGGIGMVGHEITHGFDDNGRNFNKDGLVDWWTQQSASFKEQSQCVMVYQYGNFS
 WDLAGGQHLNGINTLGENIADNGGLQAYRAYQNYIKNGEEKLLPGLDLNHKQLFFLNFAQVWCCTYRP
 EYAVNSIKTDVHSPGNFRIIGTLQNSAEFSEAFHCRKNSYMNPEKKCRVW

TRTRPLEQKLISEEDLAANDILDYKDDDDKV

Chromatograms: https://cdn.origene.com/chromatograms/mk6371_d01.zip

Restriction Sites: SgfI-MluI

Cloning Scheme:



ACCN: NM_007287

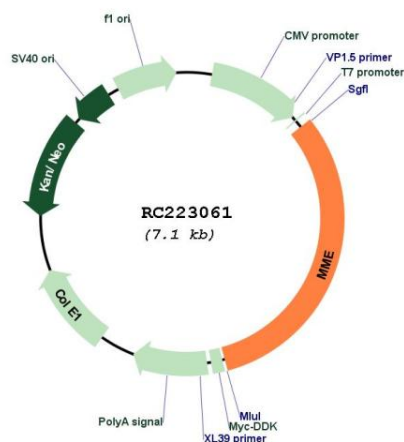
ORF Size: 2250 bp

OTI Disclaimer: The molecular sequence of this clone aligns with the gene accession number as a point of reference only. However, individual transcript sequences of the same gene can differ through naturally occurring variations (e.g. polymorphisms), each with its own valid existence. This clone is substantially in agreement with the reference, but a complete review of all prevailing variants is recommended prior to use. [More info](#)

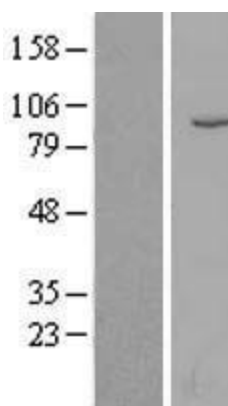
OTI Annotation: This clone was engineered to express the complete ORF with an expression tag. Expression varies depending on the nature of the gene.

Components:	The ORF clone is ion-exchange column purified and shipped in a 2D barcoded Matrix tube containing 10ug of transfection-ready, dried plasmid DNA (reconstitute with 100 ul of water).
Reconstitution Method:	<ol style="list-style-type: none"> 1. Centrifuge at 5,000xg for 5min. 2. Carefully open the tube and add 100ul of sterile water to dissolve the DNA. 3. Close the tube and incubate for 10 minutes at room temperature. 4. Briefly vortex the tube and then do a quick spin (less than 5000xg) to concentrate the liquid at the bottom. 5. Store the suspended plasmid at -20°C. The DNA is stable for at least one year from date of shipping when stored at -20°C.
RefSeq:	<u>NM_007287.3</u>
RefSeq Size:	5619 bp
RefSeq ORF:	2253 bp
Locus ID:	4311
UniProt ID:	<u>P08473</u>
Cytogenetics:	3q25.2
Domains:	Peptidase_M13
Protein Families:	Druggable Genome, Protease, Transmembrane
Protein Pathways:	Alzheimer's disease, Hematopoietic cell lineage, Renin-angiotensin system
MW:	85.5 kDa
Gene Summary:	The protein encoded by this gene is a type II transmembrane glycoprotein and a common acute lymphocytic leukemia antigen that is an important cell surface marker in the diagnosis of human acute lymphocytic leukemia (ALL). The encoded protein is present on leukemic cells of pre-B phenotype, which represent 85% of cases of ALL. This protein is not restricted to leukemic cells, however, and is found on a variety of normal tissues. The protein is a neutral endopeptidase that cleaves peptides at the amino side of hydrophobic residues and inactivates several peptide hormones including glucagon, enkephalins, substance P, neurotensin, oxytocin, and bradykinin. [provided by RefSeq, Aug 2017]

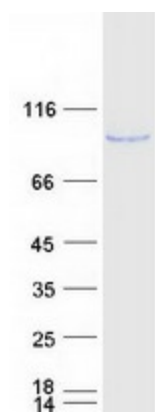
Product images:



Circular map for RC223061



Western blot validation of overexpression lysate (Cat# [LY416064]) using anti-DDK antibody (Cat# [TA50011-100]). Left: Cell lysates from untransfected HEK293T cells; Right: Cell lysates from HEK293T cells transfected with RC223061 using transfection reagent MegaTran 2.0 (Cat# [TT210002]).



Coomassie blue staining of purified MME protein (Cat# [TP323061]). The protein was produced from HEK293T cells transfected with MME cDNA clone (Cat# RC223061) using MegaTran 2.0 (Cat# [TT210002]).