

Product datasheet for **RC223050**

KNDC1 (NM_152643) Human Tagged ORF Clone

Product data:

Product Type:	Expression Plasmids
Product Name:	KNDC1 (NM_152643) Human Tagged ORF Clone
Tag:	Myc-DDK
Symbol:	KNDC1
Synonyms:	bB439H18.3; C10orf23; RASGEF2; v-KIND; Very-KIND
Mammalian Cell Selection:	Neomycin
Vector:	pCMV6-Entry (PS100001)
E. coli Selection:	Kanamycin (25 ug/mL)
ORF Nucleotide Sequence:	>RC223050 representing NM_152643 Red=Cloning site Blue=ORF Green=Tags(s)

TTTTGTAATACGACTCACTATAGGGCGGCCGGAATTCGTCGACTGGATCCGGTACCGAGGAGATCTGCC
GCC**CGATCGCC**

ATGCAGGCCATGGACCCGGCCGACGCGGATCTTTACGAGGAGGACGGCAAAGACCTGGACTTCTACGACT
TCGAGCCGCTGCCACCCTCCCCGAGGACGAGGAGAACGTGTCTCTGGCTGACATCCTCTCCCTGCGGGA
CCGCGGCCTCAGCGAGCAGGAAGCCTGGGCCGTGTGCCTGGAGTGCAGCCTGTCCATGCGGAGCGTGGCC
CAGCGCCCATCTTCCAGAGCCTGTGCATCACGCCGACACCCTGGCCTCAACACCAGCGGGAACGTGT
GTTTCATGGAGCAGCTCAGCGACGACCCTGAGGGTGCCTTCGTTCCCCCGAGTTCGACGTGACCCGGAA
CACCTTTGAGGCGACATCTACTCTCTGGGGCCACGCTGAAGGCCGCCCTCGAGTACGTGGCAGAGCCC
ACACTGGAACCCAGGCTGAGCCAAGACCTCGAGGCGCTGCTGAGCCGGATGCAGGCGGAGACCCCGGGG
ACCGGCCGGACCTTGAGAGCATCATCGCGCTGTGTGAAGAGAAGCTGCAGCTCACATCCTCTGTGCGGT
GTGCCGGAGCCTCTCTGCTGTGGGGAGGAGGGTCTCTCCATCGAGTCTTCGGAGCGCTGCAGGATGTC
AGCGAGAGCAGCTGGCGGGAGAGACCTGCCCCAGGAAACGCTGGGCCAGGAGGCCCGCCCGGGGACCCCA
GCACTGACCCGGAGGTTCTGCCGACCCCGAAGGCCCGGAGTCTGAGACCAGCCGGGGCCCGAGAGCCTC
CCCAACCAAGGCTCTGCTGTCCACCCCGGTGAGAAATGGCGAGAGCCACAGCCGGGAGGGGCTGGCCGGC
CTCGTCTGGATGCCGAGCGCACCTCGGGGAGCTGGACAGAGACGCCCTCAGGAGAAGCCGCCTGCGGA
AGGTGCAGACGTTCCCTAGGCTGCTGTCCGACAGCCCGAGGCCACCCTCTGCCTGCCGCTGACCCGCGG
GAAAAGCCAGCTGCCATATCGGAATTATTCTCTCCGACCCAGGAAGGCCCTTCTGGACAGGAAAAAT
GGCCTTTCTAGCTTCCAGGCTCAGCCAAATGCAGGCTGTGGCCGGAGCAGGAGCCGGAACACAGCTGG
GACGGGTTCCCTGTGACGGCCGACGACGAGGGGCCCTGGGGTGCCTGGCAGTCCAGGACAGCCCGA
GACTTACACCCAGCCAGGGGCCAGCAGAGGCCCTGCAGACCCTCGAGATGCTAGCGGTGAAGCCAG
ACTCCAGGGACGATGAGAGAATTCCAGAAGGAGCTAGGCAGCTGGAAAGTGCAGCCGGGAGCAGTGGG
TGTCCCTGCAGGACCTCCTGTCCAGCTGGGCCGGCCCTCCGGGAGTACGAGCTGTGGCCCTGTGCCT
GGCCTGCCTCCGGCACTGCAGACAGCCCTGAGCACCCAGCCTACCTGTGTCTGGACTCCGTGCTGTT



[View online »](#)

GCTGAGGACGGGGCTGTGCTCTTCCAGCCACCCCTGCCAACGGTTCCTATGACTCGTTCTTTCTGGCTC
 CCGAGCTGGCAGAGGAGAGGCTGGTAACTGAAAAGGCCTCTGTGTACTGTGTGGCCCGCTTCTGTGGAC
 CGCAGCCAAGTTCAGCGTCCCCCGCAACCACAAGCTGGCCTGCCACGCAGGCTCAAGACCTCCTCCTG
 GACATGGCCAGGCGCAGTGGCCCGGAGCGGCGCTCCGCGGCTGAGGCCATCAAGGTGTGGCGAGCTACC
 TCCTCCAGCGAGGCATGGACAGCCGAAAATCCTTGCCACCTCAGAGCTCCATCTGCCAGGTGTACCA
 GGAGGAAGAGACCATCAGCCTCCAAAACGCCTTCTCAGTGGTTGAACTGAAGCCAGTGTGGCACCAGCC
 CCAGAGCCCAGCCAGGTTCTTCCGCGTGAACAGCGACACCCGGGCTTGTGGCTGTGCCAGGGCCGCTGC
 CCGGCCAGCACCCCTGCGGTGAAGAAGCCACCCAGCTGCCTGCAGCGTTACCTCCGAGGCCACGCACTT
 CAAGCCATTGTCTCGCGCAGAACGAAAGTGTGGCCAGGGACCAGCCTGCCTTGCCCCAGGAGGAGTCC
 GAGGAGAGGGGGCCAGAGGGAGGAGAAGGTGAGGAGAAGCTCTCCCTGGAGGCCACGCTGGTCCC
 CCAGCCTGAAGACGCCTGACGGGCGGTGCCTGGTCCGGGGCCACAGGGAGCAGCCCAGAGCCTTTGG
 GGCGTCAGTGCAGCGTACTCAGCCAGGGCCGCCCTGCCCTCACCCAGGCCCCAGCAAACCAGCCA
 GAGGGGGCTCATCGGCAGCTCCCGCTCTCCAGTCCCCGCCCGCCACGAAGGCATCTGCGTGGCCG
 TAGAGCAAAGGGCCGCTGAGCCGATCCCACCTGGAGTTGCTTCCGGGGGCTCAGGCCGACGCCCTGGG
 GCCACCACGGCCACCACGGCCACGCCACCCGCCAAGCCCCACGAAGCAAGGCCACCGAGCGCCCG
 GGCAGGAGCCAGAGGGCCCGGGGCCACCCCTGCCGGGAACGTGATGACCAGAGTCCAGACAGTGTCC
 CAGAGAGGCCCGGCCCGCAGACCAGGAGCTGTCTGCCTGCGTGGATGCCTCGCCACTCCAGGGAG
 GACGGCTGCCCGTGCCTGCAGGAGGCCACGCGCTCATCCAGGAGGAATTTGCCTTCGATGGTACCTG
 GACAATGGGCTGGAGGCTCTGATCATGGGGAGTACATCTTGCCTTGAAGATCTCACCTTTGCCACTT
 TCTGTGGCGCCATTTCCGAGAAGTCTGTGACCTGTACTGGGATGAGAAGTTGCTGCAGAACCTCTTTAA
 GGTGGTCAAGGGCAGGCGTACCCTCCCAAGCACGGCCAGGAGGCTGGGTACAGCTCGAGGGCAGC
 CAAAGCCCCGCTCCCGTCCAGCAAGAGGCGCTCGTGCACCGCTGGGAAAAGAGAAGCCAGCCATGG
 CCAGGACCAGCAGCAGGGCCCCCTGCTACCCACCTCGTGTGCGATGTGACTCGGACGACTGTACCG
 GGGAAACTTCGAGGTGGGTTTCCGGCTCAGAGTCCGTAAAAGCCGAGAGAGCGCAGCAGCCTGAGGCT
 GCGAGGACAGACGGCCAGCTGGCGGGGCTCAGACGTGGAGGCAGTGACCCGACTGGCCAGGTCCAAG
 GGGTGGGCCAGCCTTGTCCCCGGCCAGCCGATTCCAGAGCTGCAGCCCCGGCTGGTGCAGCGCCTT
 CTACGAGGCCGACTGCTTCCGGGCGGACGTCCACAACCTACGTGAAGGACCTGGGGCGCAGCAGGCGGAC
 GGGGCCCTGCCGACGCCAGAGCCGGAGCTGGAACAGCAGCTCATGATGGAGAAAAGAACTACCGCA
 AGACCTGAAGTCTACAGAACTCTTACAGAAGAAAAGAGGAACAAAGGTTCCGACGTCAAGACCAT
 GCTGTCCAAGCTGAAAGGCGAGCTAGAAGAAATGAAATCCAGGGTCAATTCCTCAGCTTGGTCAAGAAG
 TATCTGCAGGTGATGTACGCGAACGCTGGGGCTGGAGCCCTGCACCCCTCCAGTGATCGTGAACATCG
 CGGCCGACCCCTGCGACAGCTGGACTTACGCCCTGGACGAGTCCCTCGCTCATCTTCTACACGT
 CAACAAGCACCCGGCGGGCCGAGAAAGGCCCGCATCCTGCAGGCCGGCACGCCGCTGGGGCTCATGACC
 TACCTGTACTCCAGTGATGCCTTCTGGAGGGTATGTGCAGCAATTCCTCTACACCTTCCGCTACTTCT
 GCACACCCACGACTTCTGCACTTCTCCTCGACCGCATCAACAGCACGCTGACCAGGGCCACCAGGA
 CCCACCTCGACTTACCAAGATCTACAGGCGGAGCCTCTGCGTCTGCAGGCCGGTGGAGGACTGC
 TACGCTGTGGACTTCCCTCGGAACAGCGGGCTGCTGGGGAAGCTAGAGGACTTCTCTCCAAGATCC
 TACCCCTGGACGGCTCTGCCAAGCACCTGCTGGGCTCCTGGAGGTGGCATGGACCGCGGGCCGAGGG
 CAACCTCGCGGCACAGACCTGGAGAACCCAGGAGGCGGAGGATGCCAGACCTTCAACGCCCTC
 TGTAAAGGCTCTCAGAGGACGGCATCTCCAGGAAGAGCTTCCCTGGAGGCTGCCCGAGGCAACGGGC
 TGGTGCTGCCGCCACACAAGGAGCGCCCTACACCATTGCTGCCGCCCTGCCAAGCCCTGCTTCTCGA
 GGACTTCTACGGCCCTGCGCCAAGACCAGTGAGAAGGGGCCCTACTTCTGACGGAGTACAGCACTCAC
 CAGCTTCTCAGCCAGCTCAGCTGCTACAGCAGGAGTTGTTTCAAAGTGCCACCCGGTCCACTTCTGA
 ACTCACGGGCCCTGGGCGTCATGGACAAGGACTGCCATCCCCAAAGCCAGCTTCTGAGTCTCTTT
 GGCCAAAACCTGCAGCTTATTTCTGCCAATTACGTTCCAGGACAAGTATCTGTTACAGCTTCTAAGAAAC
 GCAGATGACGTCAGCACCTGGTGGCTGCAGAGATTGTGACCAGCCACACCTCCAAGCTGCAGGTGAACT
 TGCTGTCAAATTTTGTGATTGCAAAATCTTGCTATGAGCAGAGAACTTCGCGACAGCCATGCAGAT
 CCTGAGCGGGCTGGAGCACCTGGCGGTGAGGCAGTCCCCTGCCTGGAGAATTCTGCTGCAAAGATAGCA
 GAGGTCATGGAGGAGCTGAAAGCCGTGGAGTCTTCTGAAGAGCGACAGCCTGTGTCTGATGGAAGGGC
 GGCGCTTCCGGGCGCAGCCACCCTGCCCTCGGCCACCTCCTGGCCATGCACATCCAGCAGCTGGAGAC
 AGGCGGCTTACCATGACCAACGGGGCCACAGGTGGAGCAAGCTCAGGAACATCGCAAAGGTGGTGAAGC
 CAGGTGCACGCGTTCCAGGAGAACCCTTACACCTTACGCCCGACCCCAAGCTCCAGTCTGACTCAAGC

AGAGGATTGCCCGCTTCAGCGGTGCCGACATTTCCACACTCGCCGAGATAGCAGGGCCAACTTCCACCA
GGTCTCCAGCGAGAAGCACTCACGGAAGATTACAGGACAAGCTACGGAGGATGAAGGCTACATTCCAG

AGCGGACCGACGCGTACGCGGCCGCTCGAGCAGAACTCATCTCAGAAGAGGATCTGGCAGCAAATGATATCC
TGGATTACAAGGATGACGACGATAAGGTTTAA

Protein Sequence:

>RC223050 representing NM_152643
Red=Cloning site Green=Tags(s)

MQAMDPAAADLYEEDGKDLDFYDFEPLPTLPEDEENVSLADILSLRDRGLSEQEAWAVCLECSLSMRSVA
HAAIFQSLCITPDTLAFNTSGNVCFMEQLSDDPEGAFVPEFDVTGNTFEAHIYSLGATLKAALYVAEP
TLEPRLSQDLEALLSRMQAEDPGDRPDLESI IALCEEKQLTSSCRVCRSL SAVGRRVLSIESFGALQDV
SESSWRERPAPGNAGPRRPPGDPSTDPEVLTPEGPESETSRGPRASPTKALLSTPVNRNGESHREGLAG
LVLDAERTLGELDRDALRRSRLRKVQTFPRLLSDSPEATLCLPLTRGKSQLPISLSELFSPDPRKAFDRKN
GLSSFQAQPKCRLWPEQEPEHQLGRVPCAGRSTDRGPGVPGSPGQPETSHPSQGPAPADPRDASGEAQ
TPRDDRIPPEGARQLESAAAEQWVSLQDLLSQLGRPFREYELWALCLACLALQTRPEHPAYLCLDSVLV
AEDGAVLFQPPPANGSYDSFFLAPELAEERLVTEKASVYCVAAVLWTAAKFSVPRNHKLALPRLKTL
DMARRSAPERPSAAEAIKVCGSYLLQRGMDSRKLHLRASICQVYQEEETISLQNAFVVELKPSVAPA
PEPSPGF LPVNSDTGLVAVPGVPGQHPGCGEATQLPAAFTSEATHFKPIVLAQNASVARDQPALAQEES
EERGGQREGE GEEKLSLEAHAGSPSLKTPDGPVPGPGQAAPEPLGASVQRDSAQGRPCPPQAPANQP
EGASSAAPGSPVPAPPTKASALPVEQGAEP IPPGVASGGLRPDALGPTTAHHGPRHPPKPPRSKATERP
GQEPGPGATPAGERDDQSPDSVPERPRPADRRLLCLPCVDASPLPGRTACPSLQEATRLIQEEFAFDGYL
DNGL EALIMGEYIFALKDLTFATFCGAISEKFCDLWDEKLLQNLFKVVNGQASPSSTAEAGS QLEGS
QSPRSPSSKRPSLHRLGKEKPAMARTSSRAPCSPTSVDSDVSDALSRGNFEVGFRRPQRSVKAERAQPEA
GEDRRPAGGASDVEAVTRLARSKGVG PALSPGPAGFQSCSPGWCSAFYEADCFGADVHNKYKDLGRQQAD
GALPDAQSPELEQQLMMEKRNRYRKLKFYQKLLQKEKRNKGS DVKTMLSKLKGQLEEMKSRVQFLSLVKK
YLQVMYAERWGLEPCTLPVIVNIAAAPCDLDF SPLDESSSLIFYNVNHHPGGRQKARILQAGTPLGLMT
YLYSSDAFLEGYVQQLYTFRYFCTPHDFLHFLLD RINSLTRAHQDPTSTFTKIYRRSLCVLQAWVEDC
YAVDFPRNSGLL GKLEDFISSKILPLDGS AKHLLGLLEVGMDRRAEGNPRGTDLENPREAEEDARPFNAL
CKRLSEDGISRKSFWRPRLPRGNGLVLP PPKERP YTIAAALPKPCFLEDFYGPCAKTSEKGPYFLTEYSTH
QLFSQLTLLQELFQKCHPVHFLNSRALGVMDKSTAI PKASSSESLSAKTCSLFLPNYVQDKYLLQLLRN
ADDVSTWVA AEIVTSHTSKLQVNULLSKFLLIAKSCYEQRNFATAMQILSGL EHLAVRQSPAWRILPAKIA
EVMEELKAVEVFLKSDSLCLMEGRRFRAQPTLPSAHL LAMHIQQLETTGGFTMTNGAHRWSKLRNIKVVVS
QVHAFQENPYTFSPDPKLQSYLKQRIARFSGADISTLAADSRANFHQVSSEKHSRKIQDKLRRMKATFQ

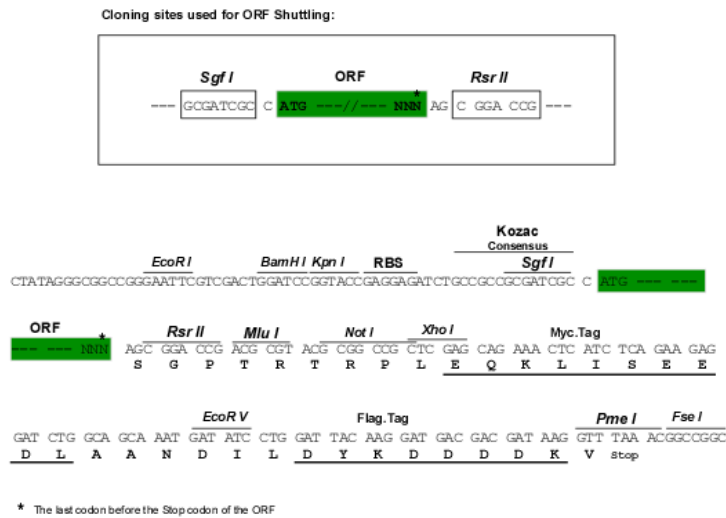
SGPTRRRLEQKLI SEEDLAANDILDYKDDDDKV

Chromatograms:

https://cdn.origene.com/chromatograms/mk8046_c11.zip

Restriction Sites:

Sgfl-RsrII

Cloning Scheme:


ACCN: NM_152643

ORF Size: 5247 bp

OTI Disclaimer: The molecular sequence of this clone aligns with the gene accession number as a point of reference only. However, individual transcript sequences of the same gene can differ through naturally occurring variations (e.g. polymorphisms), each with its own valid existence. This clone is substantially in agreement with the reference, but a complete review of all prevailing variants is recommended prior to use. [More info](#)

OTI Annotation: This clone was engineered to express the complete ORF with an expression tag. Expression varies depending on the nature of the gene.

Components: The ORF clone is ion-exchange column purified and shipped in a 2D barcoded Matrix tube containing 10ug of transfection-ready, dried plasmid DNA (reconstitute with 100 ul of water).

Reconstitution Method:

1. Centrifuge at 5,000xg for 5min.
2. Carefully open the tube and add 100ul of sterile water to dissolve the DNA.
3. Close the tube and incubate for 10 minutes at room temperature.
4. Briefly vortex the tube and then do a quick spin (less than 5000xg) to concentrate the liquid at the bottom.
5. Store the suspended plasmid at -20°C. The DNA is stable for at least one year from date of shipping when stored at -20°C.

RefSeq: [NM_152643.5](#), [NP_689856.5](#)

RefSeq Size: 6773 bp

RefSeq ORF: 5250 bp

Locus ID: 85442

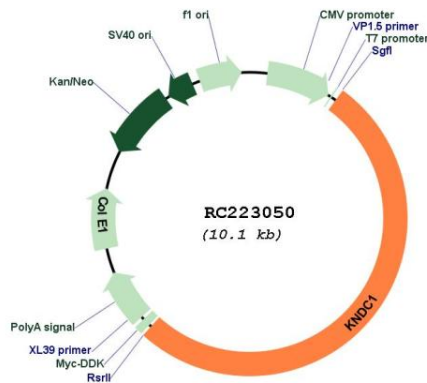
UniProt ID: [Q76NI1](#)

Cytogenetics: 10q26.3

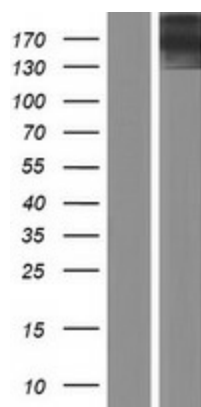
MW: 191.2 kDa

Gene Summary: The protein encoded by this gene is a Ras guanine nucleotide exchange factor that appears to negatively regulate dendritic growth in the brain. Knockdown of this gene in senescent umbilical vein endothelial cells partially reversed the senescence, showing that this gene could potentially be targeted by anti-aging therapies. [provided by RefSeq, Dec 2016]

Product images:



Circular map for RC223050



Western blot validation of overexpression lysate (Cat# [LY407372]) using anti-DDK antibody (Cat# [TA50011-100]). Left: Cell lysates from untransfected HEK293T cells; Right: Cell lysates from HEK293T cells transfected with RC223050 using transfection reagent MegaTran 2.0 (Cat# [TT210002]).