

Product datasheet for **RC223046**

WTAP (NM_152857) Human Tagged ORF Clone

Product data:

Product Type: Expression Plasmids
Product Name: WTAP (NM_152857) Human Tagged ORF Clone
Tag: Myc-DDK
Symbol: WTAP
Synonyms: Mum2
Mammalian Cell Selection: Neomycin
Vector: pCMV6-Entry (PS100001)
E. coli Selection: Kanamycin (25 ug/mL)
ORF Nucleotide Sequence: >RC223046 representing NM_152857
Red=Cloning site Blue=ORF Green=Tags(s)

TTTTGTAATACGACTCACTATAGGGCGGCCGGAATTCGTCGACTGGATCCGGTACCGAGGAGATCTGCC
GCC**CGATCGCC**

ATGACCAACGAAGAACCTCTTCCAAGAAGGTTTCGATTGAGTGAAACAGACTTCAAAGTTATGGCAAGAG
ATGAGTTAATTCTAAGATGGAACAATATGAAGCATATGTACAAGCTTTGGAGGGCAAGTACACAGATCT
TAACTCTAATGATGTAAGTGGCCTAAGAGAGTCTGAAGAAAACTAAAGCAACAACAGCAGGAGTCTGCA
CGCAGGGAAAACATCCTTGTAATGCGACTAGCAACCAAGGAACAAGAGATGCAAGAGTGTACTACTCAA
TCCAGTACCTCAAGCAAGTCCAGCAGCCGAGCGTTGCCCAACTGAGATCAACAATGGTAGACCCAGCGAT
CAACTGTTTTTCTAAAATGAAAGGTGAAGTGAACAGACTAAAGACAACTGGAACAAGCCAAAAT
GAACTGAGTGCCTGGAAGTTTACGCCTGATAGG

ACGCGTACGCGGCCGCTCGAGCAGAACTCATCTCAGAAGAGGATCTGGCAGCAAATGATATCCTGGATT
ACAAGGATGACGACGATAAGGTTTAA

Protein Sequence: >RC223046 representing NM_152857
Red=Cloning site Green=Tags(s)

MTNEEPLPKKVRVLSSETDFKVMARDELILRWKQYEAYVQALEGKYDLNSNDVTGLRESEEKLNKQQQESA
RRENILVMRLATKEQEMQECTTQIQYLKQVQPSVAQLRSTMVDPAINLFFLKMKGELEQTQDKLQEQQN
ELSAWKFTPDR

TRTRPLEQKLISEEDLAANDILDYKDDDDKV

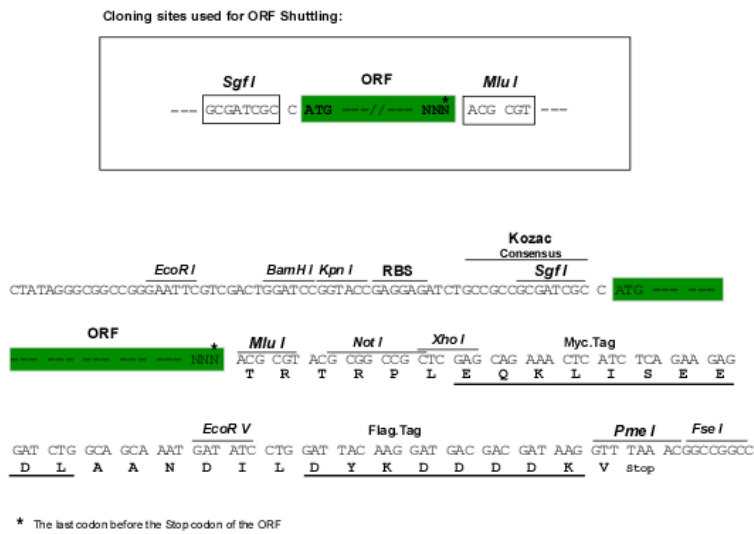
Chromatograms: https://cdn.origene.com/chromatograms/mk6477_a05.zip



[View online >](#)

Restriction Sites: SgfI-MluI

Cloning Scheme:



ACCN: NM_152857

ORF Size: 453 bp

OTI Disclaimer: The molecular sequence of this clone aligns with the gene accession number as a point of reference only. However, individual transcript sequences of the same gene can differ through naturally occurring variations (e.g. polymorphisms), each with its own valid existence. This clone is substantially in agreement with the reference, but a complete review of all prevailing variants is recommended prior to use. [More info](#)

OTI Annotation: This clone was engineered to express the complete ORF with an expression tag. Expression varies depending on the nature of the gene.

Components: The ORF clone is ion-exchange column purified and shipped in a 2D barcoded Matrix tube containing 10ug of transfection-ready, dried plasmid DNA (reconstitute with 100 ul of water).

Reconstitution Method:

1. Centrifuge at 5,000xg for 5min.
2. Carefully open the tube and add 100ul of sterile water to dissolve the DNA.
3. Close the tube and incubate for 10 minutes at room temperature.
4. Briefly vortex the tube and then do a quick spin (less than 5000xg) to concentrate the liquid at the bottom.
5. Store the suspended plasmid at -20°C. The DNA is stable for at least one year from date of shipping when stored at -20°C.

RefSeq: [NM_152857.2](#)

RefSeq Size: 1644 bp

RefSeq ORF: 456 bp

Locus ID: 9589

UniProt ID: [Q15007](#)

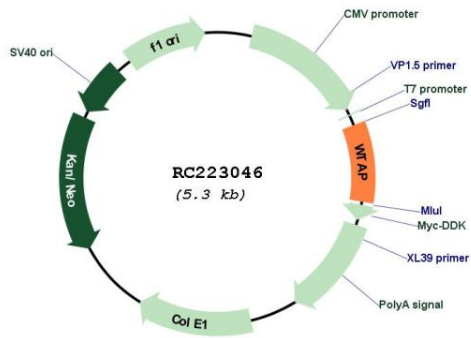
Cytogenetics: 6q25.3

Protein Families: Druggable Genome

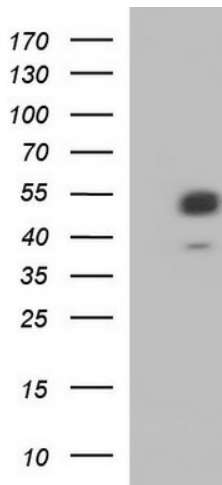
MW: 17.6 kDa

Gene Summary: The Wilms tumor suppressor gene WT1 appears to play a role in both transcriptional and posttranscriptional regulation of certain cellular genes. This gene encodes a WT1-associated protein, which is a ubiquitously expressed nuclear protein. Like WT1 protein, this protein is localized throughout the nucleoplasm as well as in speckles and partially colocalizes with splicing factors. Alternative splicing of this gene results in several transcript variants encoding three different isoforms. [provided by RefSeq, Jul 2012]

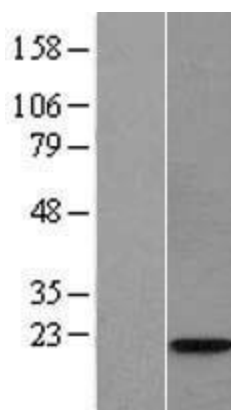
Product images:



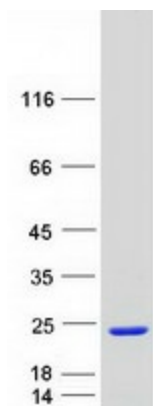
Circular map for RC223046



HEK293T cells were transfected with the pCMV6-ENTRY control (Cat# [PS100001], Left lane) or pCMV6-ENTRY WTAP (Cat# RC223046, Right lane) cDNA for 48 hrs and lysed. Equivalent amounts of cell lysates (5 ug per lane) were separated by SDS-PAGE and immunoblotted with anti-WTAP (Cat# [TA590388]). Positive lysates [LY407186] (100ug) and [LC407186] (20ug) can be purchased separately from OriGene.



Western blot validation of overexpression lysate (Cat# [LY407186]) using anti-DDK antibody (Cat# [TA50011-100]). Left: Cell lysates from untransfected HEK293T cells; Right: Cell lysates from HEK293T cells transfected with RC223046 using transfection reagent MegaTran 2.0 (Cat# [TT210002]).



Coomassie blue staining of purified WTAP protein (Cat# [TP323046]). The protein was produced from HEK293T cells transfected with WTAP cDNA clone (Cat# RC223046) using MegaTran 2.0 (Cat# [TT210002]).