

Product datasheet for **RC223041**

PCDH12 (NM_016580) Human Tagged ORF Clone

Product data:

Product Type:	Expression Plasmids
Product Name:	PCDH12 (NM_016580) Human Tagged ORF Clone
Tag:	Myc-DDK
Symbol:	PCDH12
Synonyms:	DMJDS1; VE-cadherin-2; VECAD2
Mammalian Cell Selection:	Neomycin
Vector:	pCMV6-Entry (PS100001)
E. coli Selection:	Kanamycin (25 ug/mL)
ORF Nucleotide Sequence:	>RC223041 representing NM_016580 Red=Cloning site Blue=ORF Green=Tags(s)

TTTTGTAATACGACTCACTATAGGGCGGCCGGAATTCGTCGACTGGATCCGGTACCGAGGAGATCTGCC
GCC**CGATCGCC**

ATGATGCAACTTCTGCAACTTCTGCTGGGGCTTTGGGGCCAGGTGGCTACTTATTTCTTTAGGGGATT
GTCAGGAGGTGACCACTCTCACGGTAAAACCAAGTGTGAGAGGAAGTGCCATCTGGTACAGTGATCGG
GAAGCTGTCCAGGAAGTGGCCGGGAGGAGAGGGGAGGCAAGCTGGGGCTGCCTCCAGGTGTTGCAG
CTGCCTCAGGCGCTCCCCATTAGGTGGACTCTGAGGAAGGCTTGGCTCAGCACAGGCAGGCGGCTGGATC
GAGAGCAGCTGTGCCGACAGTGGGATCCCTGCCTGGTTTCTTTGATGTGCTTGCCACAGGGGATTTGGC
TCTGATCCATGTGGAGATCCAAGTGTGGACATCAATGACCACAGCCAGGTTTCCCAAAGGCGAGCAG
GAGCTGGAAATCTCTGAGAGCGCTCTCTGCGAACCCGGATCCCCCTGGACAGAGCTCTTGACCCAGACA
CAGGCCCTAACACCCTGCACACCTACACTCTGTCTCCAGTGAGCACTTTGCCTTGGATGTCATTGTGGG
CCCTGATGAGACCAACATGCAGAACTCATAGTGGTGAAGGAGCTGGACAGGAAATCCATTCAATTTTT
GATCTGGTGTTAACTGCCTATGACAATGGGAACCCCAAGTACAGTACCAGCTTGGTCAAGGTCAACG
TCTTGGACTCCAATGACAATAGCCCTGCCTTGGTGGAGGTTCACTGGCACTGGAATCCAAGAAGATGC
TGCACCTGGTACGCTTCTCATAAAACTGACCCGACAGACCCTGACCAAGGCCCAATGGGAGGTGGAG
TTCTTCTCAGTAAGCACATGCCTCCAGAGGTGCTGGACACCTCAGTATTGATGCCAAGACAGGCCAGG
TCATTCTGCGTCGACCTCTAGACTATGAAAAGAACCCTGCCTACGAGGTGGATGTTCAAGCAAGGGACCT
GGTCCCAATCCTATCCAGCCATTGCAAAGTTCTCATCAAGGTTCTGATGTCAATGACAACATCCCA
AGCATCCAGTCCATGAGGCTCCAGCCATCACTGGTGTGAGAAGCTTCCCAAGGACAGTTTTATTG
CTTTGTCATGGCAGATGACTTGGATTGAGACACAATGGTTTGGTCCACTGCTGGCTGAGCCAAGAGCT
GGGCCACTTCAGGCTGAAAAGAACTAATGGCAACACATACATGTTGCTAACCAATGCCACTGGACAGA
GAGCAGTGGCCAAATATACCCTCACTCTGTTAGCCCAAGACCAAGGACTCCAGCCCTTATCAGCCAAGA
AACAGCTCAGCATTGATCAGTACATCAACGACAATGCACCTGTGTTGAGAAAAGCAGGTATGAAGT
CTCCACGGGGAAAACAACCTTACCCTCTTCCACTCATTACCATCAAGGCTCATGATGCAGACTTGGGC



[View online >](#)

ATTAATGGAAAAGTCTCATACCGCATCCAGGACTCCCCAGTTGCTCACTTAGTAGCTATTGACTCCAACA
CAGGAGAGGTCACTGCTCAGAGGTCACTGAACTATGAAGAGATGGCCGGCTTTGAGTTCCAGGTGATCGC
AGAGGACAGCGGGCAACCCATGCTTGCATCCAGTGTCTGTGTGGGTACGCCTCTTGGATGCCAATGAT
AATGCCCCAGAGGTGGTCCAGCCTGTGCTCAGCGATGGAAAAGCCAGCCTCTCCGTGCTTGTGAATGCCT
CCACAGGCCACCTGCTGGTGGCCATCGAGACTCCCAATGGCTTGGGCCAGCGGGCACTGACACACCTCC
ACTGGCCACTCACAGTCCCAGCCATTCCTTTTGACAACCATTGTGGCAAGAGATGCAGACTCGGGGGCA
AATGGAGAGCCCCTCTACAGCATCCGCACTGGAATGAAGCCACCTCTTCATCCTCAACCCTCATACGG
GGCAGCTGTTTCGTCATGTCAACCAATGCCAGCAGCCTCATTGGGAGTGAGTGGGAGCTGGAGATAGTAGT
AGAGGACCAGGGAAGCCCCCTTACAGACCCAGCCCTGTTGAGGGTCATGTTTGTACCAGTGTGGAC
CACCTGAGGGACTCAGCCGCAAGCCTGGGGCCTTGGAGCATGTCGATGCTGACGGTGATCTGCCTGGCTG
TACTGTTGGGCATCTTCGGGTTGATCCTGGCTTTGTTTCATGTCCATCTGCCGGACAGAAAAGAAGGACAA
CAGGGCCTACAACGTGCGGGAGGCCGAGTCCACCTACCGCCAGCAGCCCAAGAGGCCAGAAAACACATT
CAGAAGGCAGACATCCACCTCGTGCCTGTGCTCAGGGGTGAGGCAGGTGAGCCTTGTGAAGTGGGCAGT
CCCACAAAGATGTGGACAAGGAGGCGATGATGGAAGCAGGCTGGGACCCCTGCCTGCAGGCCCTTCCA
CCTCACCCGACCCTGTACAGGACGCTGCGTAATCAAGGCAACCAGGGAGCACCGCGGAGAGCCGAGAG
GTGCTGCAAGACAGGTCACCTCCTTTTCAACCATCCCAGGCAGAGGAATGCCTCCCGGAGAACCTGA
ACCTTCCCAGGCCAGCCTGCCACAGGCCAGCCACGTTCCAGGCCTCTGAAGGTTGCAGGCAGCCCCAC
AGGGAGGCTGGCTGGAGACCAGGGCAGTGAGGAAGCCCCACAGAGGCCACCAGCCTCCTCTGCAACCCTG
AGACGGCAGCGACATCTCAATGGCAAAGTGTCCCTGAGAAAAGATCAGGGCCCCGTGAGATCCTGCGGA
GCCTGGTCCGGCTGTCTGTGGCTGCCTTCGCCGAGCGGAACCCCGTGGAGGAGCTCACTGTGGATTCTCC
TCCTGTTAGCAAATCTCCAGCTGCTGCCTTGTGCTGCATCAGGGCCAATTCCAGCCAAACCAACCAC
CGAGGAAATAAGTACTTGGCCAAGCCAGGAGGCAGCAGGAGTGAATCCCAGACACAGATGGCCCAAGTG
CAAGGGCTGGAGCCAGACAGACCAGAACAGGAGGAAGGGCCTTGGATCCTGAAGAGGACCTCTCTGT
GAAGCAACTGCTAGAAGAAGAGCTGTCAAGTCTGCTGGACCCAGCACAGGTCTGGCCCTGGACCGGCTG
AGCGCCCTGACCCGGCCTGGATGGCGAGACTCTTTGCCCTCACCACCAACTACCGTGACAATGTGA
TCTCCCCGGATGCTGCAGCCACGGAGGAGCAAGGACCTTCCAGACGTTCCGCAAGGCAGAGGCACCAGA
GCTGAGCCCAACAGGCACGAGGCTGGCCAGCACCTTTGTCTCGGAGATGAGCTCACTGCTGGAGATGCTG
CTGGAACAGCGCTCCAGCATGCCCGTGGAGGCCGCTCCGAGGCGCTGCGGCGGCTCTCGGTCTGCGGGA
GGACCCTCAGTTAGACTTGGCCACCAGTGCAGCCTCAGGCATGAAAGTGAAGGGGACCCAGGTGGAAA
GACGGGACTGAGGGCAAGAGCAGAGGCAGCAGCAGCAGCAGCAGGTGCCTG

ACGCGTACGCGGCCGCTCGAGCAGAACTCATCTCAGAAGAGGATCTGGCAGCAAATGATATCCTGGATT
ACAAGGATGACGACGATAAGGTTTAA

Protein Sequence: >RC223041 representing NM_016580
 Red=Cloning site Green=Tags(s)

```

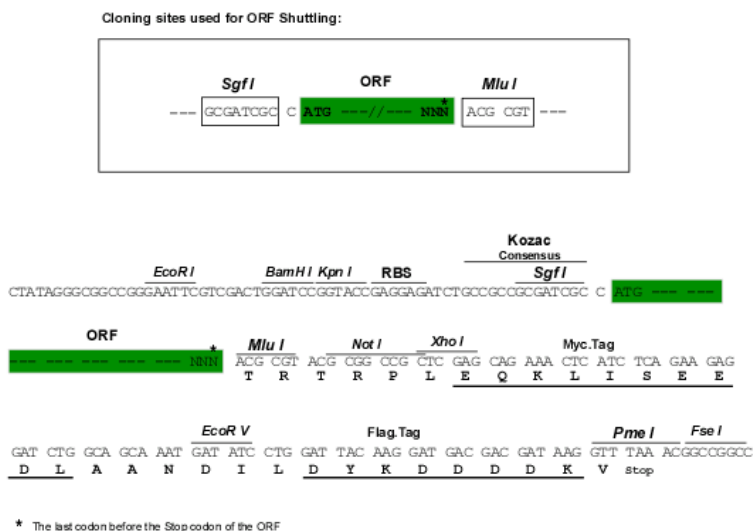
MMQLLQLLLGLLPGPGYLFLLGDCQEVTTLTVKYQVSEEVPSGTVIGKLSQELGREERRRQAGAAFQVLQ
LPQALPIQVDSEEGLLSTGRRLDREQLCRQWDPCLVSFDVLATGDLALIHVEIQVLDINDHQPRFPKGEQ
ELEISEASALRTRIPDLRALDPTDGPNTLHTYTLSPSEHFALDVIVGPDETKHAELIVVKELDREIHSFF
DLVLTAYDNGNPPKSGTSLVKVNVLDSDNDNSPAFAESSLALEIQEDAAPGTLLIKLTATDPPDQGPNGEVE
FFLSKHMPPEVLDTFSIDAKTGQVILRRPLDYEKNPAYEVDVQARDLGNPPIPAHCKVLIKVLDVNDNIP
SIHVTWASQPSLVSEALPKDSFIALVMADDLDSGHNGLVHCWLSQELGHFRLKRTNGNTYMLLTNATLDR
EQWPKYTLTLLAQDQGLQPLSAKKQLSIQISDINDNAPVFEKSRYEVSTRENNLPSLHLITIKAHADLG
INGKVSYRIQDSPVAHLVAIDSNTGEVTAQRSLNYEEMAGFEFQVIAEDSGQPMLASSSVVWVSLLDAND
NAPEVVQPVLSDGKASLVVNSTGHLLVPIETPNGLGPAGTDTPLATHSSRPFLTTIVARDADSGA
NGEPLYSIRSGNEAHLFILNPHGTQLFVNVTNASSLIGSEWELEIVVEDQGSPLQTRALLRVMFVTSVD
HLRDSARKPGALSMSMLTVICLAVLLGIFGLILALFMSICRTEKKDNRAYNCREAESTYRQPQPKPKHI
QKADIHLVPVLRGQAGEPCEVGQSHKDVDKEAMMEAGWDPCLQAPFHLTPTLYRTLNRQGNQGAPAESRE
VLQDQTVNLLFNHPRQRNASRENLNLEPQPATGQPRSRPLKVAGSPTGRLAGDQGSSEAPQRPASSATL
RRQRHLNGKVSPEKESGPRQILRSLVRLSVAFAERNPVEELTVDSPPVQQISQLLSLLHQGFQPKPNH
RGNKYLAKEGGSRSAPDIDGDSARAGGQTDPEQEEGPLDPEEDLSVKQLLEELSSLLDPSTGLALDRL
SAPDPAWMARLSLPLTTNYRDNVI SPDAAATEEPRTFQTFGKAEAPELSPTGTRLASTFVSEMSLLEML
LEQRSSMPVEAASEALRRLSVCGRTLSLDLATSAAAGMKVQGDGPGGKTGTGEGKSRGSSSSSRCL
    
```

TRTRPLEQKLISEEDLAANDILDYKDDDDKV

Chromatograms: https://cdn.origene.com/chromatograms/mk6683_e01.zip

Restriction Sites: SgfI-MluI

Cloning Scheme:

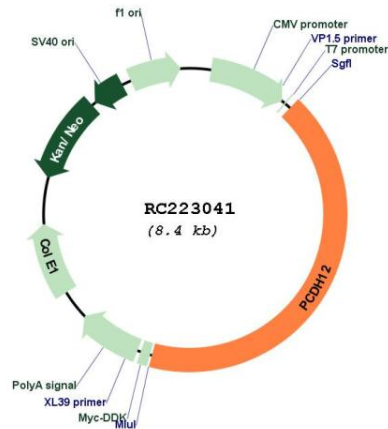


ACCN: NM_016580

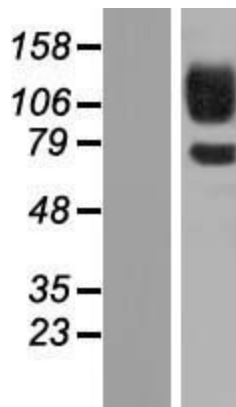
ORF Size: 3552 bp

OTI Disclaimer:	The molecular sequence of this clone aligns with the gene accession number as a point of reference only. However, individual transcript sequences of the same gene can differ through naturally occurring variations (e.g. polymorphisms), each with its own valid existence. This clone is substantially in agreement with the reference, but a complete review of all prevailing variants is recommended prior to use. More info
OTI Annotation:	This clone was engineered to express the complete ORF with an expression tag. Expression varies depending on the nature of the gene.
Components:	The ORF clone is ion-exchange column purified and shipped in a 2D barcoded Matrix tube containing 10ug of transfection-ready, dried plasmid DNA (reconstitute with 100 ul of water).
Reconstitution Method:	<ol style="list-style-type: none">1. Centrifuge at 5,000xg for 5min.2. Carefully open the tube and add 100ul of sterile water to dissolve the DNA.3. Close the tube and incubate for 10 minutes at room temperature.4. Briefly vortex the tube and then do a quick spin (less than 5000xg) to concentrate the liquid at the bottom.5. Store the suspended plasmid at -20°C. The DNA is stable for at least one year from date of shipping when stored at -20°C.
RefSeq:	NM_016580.4
RefSeq Size:	5210 bp
RefSeq ORF:	3555 bp
Locus ID:	51294
UniProt ID:	Q9NPG4
Cytogenetics:	5q31.3
Domains:	CA
Protein Families:	Transmembrane
MW:	128.99 kDa
Gene Summary:	This gene belongs to the protocadherin gene family, a subfamily of the cadherin superfamily. The encoded protein consists of an extracellular domain containing 6 cadherin repeats, a transmembrane domain and a cytoplasmic tail that differs from those of the classical cadherins. The gene localizes to the region on chromosome 5 where the protocadherin gene clusters reside. The exon organization of this transcript is similar to that of the gene cluster transcripts, notably the first large exon, but no significant sequence homology exists. The function of this cellular adhesion protein is undetermined but mouse protocadherin 12 does not bind catenins and appears to have no affect on cell migration or growth. [provided by RefSeq, Jul 2008]

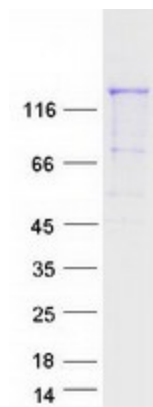
Product images:



Circular map for RC223041



Western blot validation of overexpression lysate (Cat# [LY413902]) using anti-DDK antibody (Cat# [TA50011-100]). Left: Cell lysates from untransfected HEK293T cells; Right: Cell lysates from HEK293T cells transfected with RC223041 using transfection reagent MegaTran 2.0 (Cat# [TT210002]).



Coomassie blue staining of purified PCDH12 protein (Cat# [TP323041]). The protein was produced from HEK293T cells transfected with PCDH12 cDNA clone (Cat# RC223041) using MegaTran 2.0 (Cat# [TT210002]).