

Product datasheet for **RC223037**

C11orf16 (NM_020643) Human Tagged ORF Clone

Product data:

Product Type:	Expression Plasmids
Product Name:	C11orf16 (NM_020643) Human Tagged ORF Clone
Tag:	Myc-DDK
Symbol:	C11orf16
Mammalian Cell Selection:	Neomycin
Vector:	pCMV6-Entry (PS100001)
E. coli Selection:	Kanamycin (25 ug/mL)



[View online »](#)

ORF Nucleotide Sequence:

>RC223037 representing NM_020643
 Red=Cloning site Blue=ORF Green=Tags(s)

TTTTGTAATACGACTCACTATAGGGCGGCCGGGAATTCGTCGACTGGATCCGGTACCGAGGAGATCTGCC
 GCC**CGCATCGCC**

ATGGAATCCTCCACGGGGCCAGGATGCCTTTGCTCAAATACTGCAGCGTGGCCACAAGCCTGAAGGCC
 CTGGCTGGGACGGTGTCTCCACCTTGGGACCTCTCCTTACCTACCCCTTTGCCCTCCAAGCACCTG
 GCTCACGGGCACAAGCCCTTGAAGGCATGCCTTCTTGGCCATGTCTCCACGTTGCCGACCCAGCA
 TGGCAGGGGCCTGGCTGGCTGGGAAGAGCTGGAGATGCTGCCAACACATGGGTCCTAGCAAGAAGGGAAG
 CAGATGGTTTTTACTACCGGGCCAAAATAAGGCCACTCCCGAGCTGGAGAGACAGGGGGTCTGCTGTG
 GGAATTCGAGGCTCCTTGTGCGAGGCCAAAGCTGCCAGCCAGCAGCAGAGAGTGGTCTTAGAAGAG
 GATGTCATTCTCTCTCACCATCTGTAGGATACTACTGAGACCAGGGGATAAGGTGCTGGCACTCTGGG
 AGCCAGGCCAACAGCAGTATGGCCCTGGCACTGTTCTTTGGGCTGGAGATGAGAGATCCCCAGAGAGC
 ATCAAAGGAAAAAGAAATCACTGTTTCTTCTGGAATGGCAAAGCTGCTAAAGTGCCCTAGGTGGGGTC
 CAGTCGGTGTCCCTGACCATCTGGAAGAAGGCTGTGGAGAGGCTGCACAAGTCTTTCACCGAGGAGCACC
 CCAGGCCCTTCACTGGGCCCTTGTGCTCTCTGCTAGGGCCAATCACTGGGCGCATCACTAATAGACT
 TCCTCCGGATGCTCCATTCTGTGCCCTCTGTCACCATCATGCCTGCTGCCAGCTACTGTGCCAGGGC
 TGCTCTGTGGCTGCCGCCATGTGGCAGACTTGGTGGCCTCTAACCAGGACCTCAGAAGTCATGGCCA
 GAGAACTCCAGAGTTGGAGCCACAGCACAGCTTTTGGCCCTGGAAGGTCTAAAGAGGAGAAAGTAGC
 AATGCACGCTCCCTGGCTGTTTCTTCTCCTCATCTCCTCTGTGAACAAGACGGTGTGGAGAATGAT
 CTGGAGATGGGCCCTCCCAGAGACTGATGGTGAACAGTGCAGTCAACACAGATCCCATCTTTCTTGAGA
 TGCTCTGAGACAGAGTGGCCTCTGCCAGCCTGAGTGGAGGTATTGGAAGAGAAACGGCCCTGAGCCATG
 CTTGGGAAGCCAGGAACAAGATATTCCAACATCTGCAAAGAAGAAAAGGATCACAAACAGCAGAGAGCA
 CAAACTGCAGTAGTGGGACTACCAAGGAGCTGGTCTCGAAAGCAACCCACATGAAGCCACCGCGGACCC
 CGCCAGGGGAAGCTGAACACAGAAAGCGGAGTCAGAGCCTTGCAATATGTCAGTGAACAAGAATCCCG
 T

ACGCGTACGCGGCCGCTCGAGCAGAAACTCATCTCAGAAGAGGATCTGGCAGCAAATGATATCTGGATT
 ACAAGGATGACGACGATAAGGTTTAA

Protein Sequence:

>RC223037 representing NM_020643
 Red=Cloning site Green=Tags(s)

MESSTGPRMPLLYKYSVATSLKAPGWDGAAPPWDLSTYYPFALQAPWLTGHKPLARHASSCPCLHVADPA
 WQGPWLGGRAGDAANTWVLARREADGFYRAQIKATPELERQGVLLVEFEAPLVAGPKLPAQQRVVLEE
 DVIPLSPSVGYSLRPGDKVLALWEPGQQYGPVTLLGLEMRDPQRASKEKEITVHFVWNGKAAKVP LGGV
 QSVSLTIWKKAVERLHKSFTRHPRPLHWAPCCSLLGPITGRITNELPPDAPFLCPLCHHHACCQLL CQG
 CLCGPPCGTTWWPLTRTSEVMARELPELEPTAQLLPLEGPKKEEKVAMHAPLAVSSSSSSSCEQDGVEND
 LEMGPPQRLMVNSAVNTDPIFLEMPLRQSGLCQPEWRYWKRNGPEPCLGKPGTRYSNICKEEKDHKQORA
 QTVAVVGTTELKLVSKATHMKPPRTPPGEAEHRKRSQSLAICQWNKNSR

TRTRPLEQKLISEEDLAANDILDYKDDDDKV

Chromatograms:

https://cdn.origene.com/chromatograms/mk8100_e10.zip

Restriction Sites:

Sgfl-Mlul

Cloning Scheme:


ACCN: NM_020643

ORF Size: 1401 bp

OTI Disclaimer: The molecular sequence of this clone aligns with the gene accession number as a point of reference only. However, individual transcript sequences of the same gene can differ through naturally occurring variations (e.g. polymorphisms), each with its own valid existence. This clone is substantially in agreement with the reference, but a complete review of all prevailing variants is recommended prior to use. [More info](#)

OTI Annotation: This clone was engineered to express the complete ORF with an expression tag. Expression varies depending on the nature of the gene.

Components: The ORF clone is ion-exchange column purified and shipped in a 2D barcoded Matrix tube containing 10ug of transfection-ready, dried plasmid DNA (reconstitute with 100 ul of water).

- Reconstitution Method:**
1. Centrifuge at 5,000xg for 5min.
 2. Carefully open the tube and add 100ul of sterile water to dissolve the DNA.
 3. Close the tube and incubate for 10 minutes at room temperature.
 4. Briefly vortex the tube and then do a quick spin (less than 5000xg) to concentrate the liquid at the bottom.
 5. Store the suspended plasmid at -20°C. The DNA is stable for at least one year from date of shipping when stored at -20°C.

RefSeq: [NM_020643.3](#)

RefSeq Size: 1942 bp

RefSeq ORF: 1404 bp

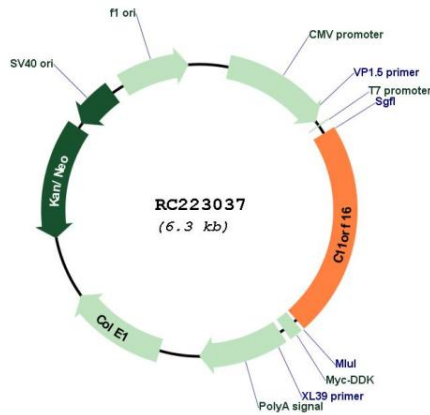
Locus ID: 56673

UniProt ID: [Q9NQ32](#)

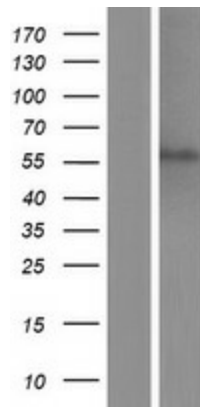
Cytogenetics: 11p15.4

MW: 51.6 kDa

Product images:



Circular map for RC223037



Western blot validation of overexpression lysate (Cat# [LY412405]) using anti-DDK antibody (Cat# [TA50011-100]). Left: Cell lysates from untransfected HEK293T cells; Right: Cell lysates from HEK293T cells transfected with RC223037 using transfection reagent MegaTran 2.0 (Cat# [TT210002]).