

## Product datasheet for **RC223036**

### DLX4 (NM\_001934) Human Tagged ORF Clone

#### Product data:

**Product Type:** Expression Plasmids  
**Product Name:** DLX4 (NM\_001934) Human Tagged ORF Clone  
**Tag:** Myc-DDK  
**Symbol:** DLX4  
**Synonyms:** BP1; DLX7; DLX8; DLX9; OFC15  
**Mammalian Cell Selection:** Neomycin  
**Vector:** pCMV6-Entry (PS100001)  
**E. coli Selection:** Kanamycin (25 ug/mL)  
**ORF Nucleotide Sequence:** >RC223036 representing NM\_001934  
 Red=Cloning site Blue=ORF Green=Tags(s)

TTTTGTAATACGACTCACTATAGGGCGGCCGGAATTCGTCGACTGGATCCGGTACCGAGGAGATCTGCC  
 GCC**CGATCGCC**

ATGAAACTGTCCGTCTACCCCTCGCTCCCTCGCCCCACACCGTGTGTGCTGCCACCAGACT  
 CGGAGAAGCCGGCTGTCCCGGAACCCTCCGAGCGCGCCCTCAGGCCCGCCAAAAAGCTCCGCAA  
 GCCGAGGACCTACTCCAGCTGCAGCTGCAGCACCTAAACCAGCGTTCCAGCACACGCAGTACCTG  
 GCGCTGCCGAGAGGGCCAGCTGGCAGCGCAGCTCGGCCTACCCAGACCCAGGTAAGATCTGGTTTC  
 AGAACAAACGCTCCAAGTATAAGAAGCTCCTGAAGCAGAATTCTGGGGGCAGGAAGGGGACTTCCCTGG  
 GAGGACCTTCTGTGTCTCCCTGCTCCCCACCCCTCCCTCCCTCTGGGATCTACCCAAGCAGGGACC  
 CTGCCACCAGTGGCTATGGCAACAGCTTTGGAGCCTGGTATCAGCATCACTCCTCAGATGTCCTGGCTT  
 CGCCTCAGATGATG

**ACGCGT**ACGCGGCCGCTCGAGCAGAACTCATCTCAGAAGAGGATCTGGCAGCAAATGATATCCTGGATT  
 ACAAGGATGACGACGATAAGGTTTAA

**Protein Sequence:** >RC223036 representing NM\_001934  
 Red=Cloning site Green=Tags(s)

MKLSVLPPRSLLAPYTVLCCPPDSEKPRLSPEPSERRPQAPAKKLRKPRTIYSSLQLQHLNQRFHQHTQYL  
 ALPERAQLAAQLGLTQTQVKIWFQNKRSKYKLLKQNSGGQEGDFPGRFISVSPSPPLPSLWDLPKAGT  
 LPTSGYGNFSGAWYQHSSDVLASPM

**TRTRPLEQKLI**SEEDLAANDILDYKDDDDKV

**Restriction Sites:** Sgfl-MluI



**Cloning Scheme:**


**ACCN:** NM\_001934

**ORF Size:** 504 bp

**OTI Disclaimer:** The molecular sequence of this clone aligns with the gene accession number as a point of reference only. However, individual transcript sequences of the same gene can differ through naturally occurring variations (e.g. polymorphisms), each with its own valid existence. This clone is substantially in agreement with the reference, but a complete review of all prevailing variants is recommended prior to use. [More info](#)

**OTI Annotation:** This clone was engineered to express the complete ORF with an expression tag. Expression varies depending on the nature of the gene.

**Components:** The ORF clone is ion-exchange column purified and shipped in a 2D barcoded Matrix tube containing 10ug of transfection-ready, dried plasmid DNA (reconstitute with 100 ul of water).

**Reconstitution Method:**

1. Centrifuge at 5,000xg for 5min.
2. Carefully open the tube and add 100ul of sterile water to dissolve the DNA.
3. Close the tube and incubate for 10 minutes at room temperature.
4. Briefly vortex the tube and then do a quick spin (less than 5000xg) to concentrate the liquid at the bottom.
5. Store the suspended plasmid at -20°C. The DNA is stable for at least one year from date of shipping when stored at -20°C.

**RefSeq:** [NM\\_001934.3](#)

**RefSeq Size:** 1405 bp

**RefSeq ORF:** 507 bp

**Locus ID:** 1748

**UniProt ID:** [Q92988](#)

**Cytogenetics:** 17q21.33

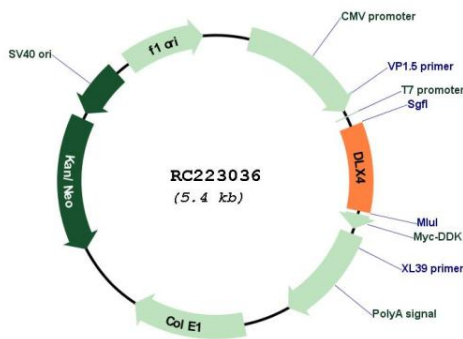
**Domains:** homeobox

**Protein Families:** Transcription Factors

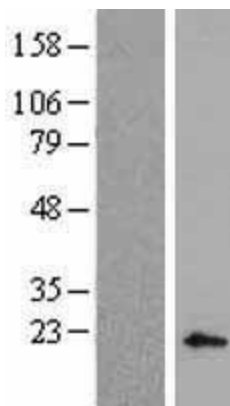
**MW:** 18.7 kDa

**Gene Summary:** Many vertebrate homeo box-containing genes have been identified on the basis of their sequence similarity with *Drosophila* developmental genes. Members of the *Dlx* gene family contain a homeobox that is related to that of *Distal-less* (*Dll*), a gene expressed in the head and limbs of the developing fruit fly. The *Distal-less* (*Dlx*) family of genes comprises at least 6 different members, *DLX1-DLX6*. The *DLX* proteins are postulated to play a role in forebrain and craniofacial development. Three transcript variants have been described for this gene, however, the full length nature of one variant has not been described. Studies of the two splice variants revealed that one encoded isoform functions as a repressor of the beta-globin gene while the other isoform lacks that function. [provided by RefSeq, Jul 2008]

**Product images:**



Circular map for RC223036



Western blot validation of overexpression lysate (Cat# [LY419636]) using anti-DDK antibody (Cat# [TA50011-100]). Left: Cell lysates from untransfected HEK293T cells; Right: Cell lysates from HEK293T cells transfected with RC223036 using transfection reagent MegaTran 2.0 (Cat# [TT210002]).