

## Product datasheet for **RC223030**

### **TAGAP (NM\_152133) Human Tagged ORF Clone**

#### **Product data:**

Product Type:	Expression Plasmids
Product Name:	TAGAP (NM_152133) Human Tagged ORF Clone
Tag:	Myc-DDK
Symbol:	TAGAP
Synonyms:	ARHGAP47; FKSG15; IDDM21; TAGAP1
Mammalian Cell Selection:	Neomycin
Vector:	pCMV6-Entry (PS100001)
E. coli Selection:	Kanamycin (25 ug/mL)



[View online »](#)

**ORF Nucleotide Sequence:**

>RC223030 representing NM\_152133  
 Red=Cloning site Blue=ORF Green=Tags(s)

TTTTGTAATACGACTCACTATAGGGCGGCCGGAATTCGTCGACTGGATCCGGTACCGAGGAGATCTGCC  
 GCC**GCGATCGCC**

ATGGGTGCTCTGGAGATGCAGGACGAGGAGGACAGAATCGAGGCCCTGAAACAGGTTGCAGATAAGCTCC  
 CCCGGCCCAACCTCCTGCTACTCAAGCACTTGGTCTATGTGCTGCACCTCATCAGCAAGAACTCTGAGGT  
 GAACAGGATGGACTCCAGCAATCTGGCCATCTGCATTGGACCCAACATGCTCACCTGGAGAATGACCAG  
 AGCCTGTCATTTGAAGCCAGAAGGACCTGAACAACAAGGTGAAGACACTGGTGAATTCCTCATTGATA  
 ACTGCTTTGAAATATTTGGGGAGAACATTCAGTGCATCCAGTATCACTTCTGATGACTCCCTGGAGCA  
 CACTGACAGTTGATGTGTCGACCTGCAGAATGACTCAGCCTACGACAGCAACGACCTGATGTGGAA  
 TCCAACAGCAGCAGTGGCATCAGCTCTCCAGCAGGCAGCCCAGGTGCCATGGCCACAGCTGCTGGCT  
 TGGATAGCGCGGGCCACAGGATGCCCGAGAGGTGAGCCAGAGCCATTGTGAGCACCTGGCCAGGCT  
 GAAAAGCTCCCTCGCACAGCCCGATAGGAGATACTCAGAGCCAGCATGCCATCCTCCAGGAGTGCCTC  
 GAGAGCCGGGTGACAAACCAAACTAAACAAGAGTGAAGGGGACTTCCCGTGCCCGGGTAGGCTCTC  
 GTTTGAAAGTGAGGAGGCTGAAGACCCATTTCCAGAGGAGTCTTCCCTGCAGTGAAGGCAAAACCAA  
 GAGGCCGGTGGACCTGAAGATCAAGAACTTGGCCCGGGTTCGGTCTCCCGCGGGCACTGGTTCTCAA  
 GCCTTCTCCAGCAGCTCGCTGGACGCGTCTCTGACAGCTCGCCCGTGGCTTCTCCTTCCAGTCCAAAA  
 GAAATTTCTTCCAGCAGACATCAGTCTTTACCACAAAGACAGAGAAAGGCAAGCCAGCCGAGAAATTA  
 AAAGCACTCCATGTCTTTACCTTTGCCCTCACAAAAAGTGTGACAAAAACCTCAGCGCGGGCTCT  
 GGGAAATCGAAGACTTTACCAGGGACCAGTCCCAGGGGTGTCAGAAAGGAAAGCCAGCTTCCCGGCC  
 GAATCGTGCAGGAAAATGGGTGTAAACCCACAACCAACAGCCCGCGGCTTCTGCCTGAGACCCACGC  
 CCTCTCGGTGGATGATGTGTTCCAGGGAGCTGACTGGGAGAGCCCTGGAAGCCACCCCTTATGAAGAG  
 GCCATGCAGGGCCCGGCAGCCAGACTAGTGGCCTCCGAGAGCCAGACCGTGGGGAGCATGACGGTGGGA  
 GCATGAGGGCGAGGATGCTGGAGGCGCACTGCCTCCTACCCCTCTTCCACCTGCTCACCAGTAGAGGA  
 CTCAAGACACAGGGGAGCAAAGAGCCACTCCCTGGCCACGGACTCTCTCCCTGCTGAGCGATGGAAA  
 CAGAGCAGAACTGTCATGCTTCTGGGGACTCTCTGGGGCAGTGTCTGGCCAGGGAGACCTGAGCTCC  
 TCCCGTGAAGACCGTCTCCGAGTCCGTGCAGAGGAATAAGCGGGACTGTCTCGTGCAGCATGTAGCCA  
 GCCGCTCTTGGAGCTGACCAATCCAATATGCCAAAGAATCGTATATT

AG**CGGACCG**ACGCGTACGCGGCCGCTCGAGCAGAACTCATCTCAGAAGAGGATCTGGCAGCAAATGATATCC  
 TGGATTACAAGGATGACGACGATAAGGTTTAA

**Protein Sequence:**

>RC223030 representing NM\_152133  
 Red=Cloning site Green=Tags(s)

MGALEMQDEEDRIEALKQVADKLRPNLLLLKHLVYVHLHLSKNSEVNRMDSSNLAICIGPNMLTLENDQ  
 SLSFEAQKDLNKNKVKTLVEFLIDNCFEIFGENIPVHSSITSDDSLEHTDSSDVSTLQNDAYSNDPQDVE  
 SNSSSGISSPSRQPQVPMATAAGLDSAGPQDAREVSPEPIVSTVARLKSSLAQPDRRYSEPSMPSSQECL  
 ESRVTNQTLLKSEGDFVPRVGSRLSEEAEDPFPEEVFPAVQGKTKRPVDLKIKNLAPGSVLPALVLK  
 AFSSSSLDASSDSSPVASPPSKRNFFSRHQSFSTTKTEKGKPSREIKKHSMSFTFAPHKKVLTKNLSAGS  
 GKSQDFTRDHVPRGVRKESQLAGRIVQENGCEHNQTARGFCLRPHALSVDDVFGADWERPGSPSYEE  
 AMQGPAARLVASESQTVGSMTVGSMRARMLEAHCLLPPLPPAHHVEDSRHRGSKEPLPGHLSPLPERWK  
 QSRTVHASGDSLGHVSGRPELLPLRTVSESVQRNKRDCLVRRCSQPVFQADQFYAKESYI

**SGP**TRRRLEQKLISEEDLAANDILDYKDDDDKV

**Chromatograms:**

[https://cdn.origene.com/chromatograms/mk6809\\_f03.zip](https://cdn.origene.com/chromatograms/mk6809_f03.zip)

**Restriction Sites:**

Sgfl-RsrII

**Cloning Scheme:**


**ACCN:** NM\_152133

**ORF Size:** 1659 bp

**OTI Disclaimer:** The molecular sequence of this clone aligns with the gene accession number as a point of reference only. However, individual transcript sequences of the same gene can differ through naturally occurring variations (e.g. polymorphisms), each with its own valid existence. This clone is substantially in agreement with the reference, but a complete review of all prevailing variants is recommended prior to use. [More info](#)

**OTI Annotation:** This clone was engineered to express the complete ORF with an expression tag. Expression varies depending on the nature of the gene.

**Components:** The ORF clone is ion-exchange column purified and shipped in a 2D barcoded Matrix tube containing 10ug of transfection-ready, dried plasmid DNA (reconstitute with 100 ul of water).

- Reconstitution Method:**
1. Centrifuge at 5,000xg for 5min.
  2. Carefully open the tube and add 100ul of sterile water to dissolve the DNA.
  3. Close the tube and incubate for 10 minutes at room temperature.
  4. Briefly vortex the tube and then do a quick spin (less than 5000xg) to concentrate the liquid at the bottom.
  5. Store the suspended plasmid at -20°C. The DNA is stable for at least one year from date of shipping when stored at -20°C.

**RefSeq:** [NM\\_152133.2](#)

**RefSeq Size:** 3196 bp

**RefSeq ORF:** 1662 bp

**Locus ID:** 117289

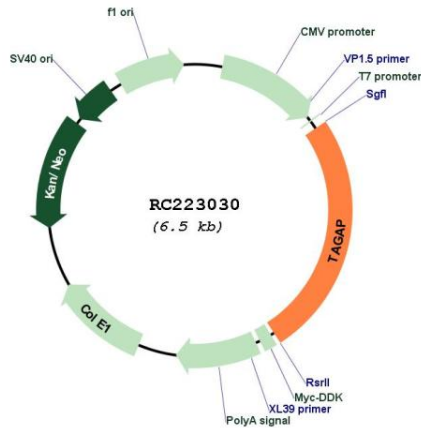
**UniProt ID:** [Q8N103](#)

**Cytogenetics:** 6q25.3

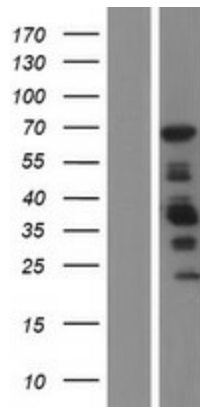
**MW:** 60.5 kDa

**Gene Summary:** This gene encodes a member of the Rho GTPase-activator protein superfamily. The encoded protein may function as a Rho GTPase-activating protein. Alterations in this gene may be associated with several diseases, including rheumatoid arthritis, celiac disease, and multiple sclerosis. Alternate splicing results in multiple transcript variants encoding distinct isoforms. [provided by RefSeq, Jul 2013]

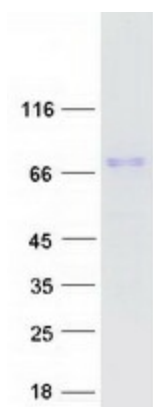
**Product images:**



Circular map for RC223030



Western blot validation of overexpression lysate (Cat# [LY407719]) using anti-DDK antibody (Cat# [TA50011-100]). Left: Cell lysates from untransfected HEK293T cells; Right: Cell lysates from HEK293T cells transfected with RC223030 using transfection reagent MegaTran 2.0 (Cat# [TT210002]).



Coomassie blue staining of purified TAGAP protein (Cat# [TP323030]). The protein was produced from HEK293T cells transfected with TAGAP cDNA clone (Cat# RC223030) using MegaTran 2.0 (Cat# [TT210002]).