

## Product datasheet for **RC223018**

### **GCOM1 (NM\_001018090) Human Tagged ORF Clone**

#### **Product data:**

Product Type:	Expression Plasmids
Product Name:	GCOM1 (NM_001018090) Human Tagged ORF Clone
Tag:	Myc-DDK
Symbol:	GCOM1
Synonyms:	gcom; Gcom2; GRINL1A; MYZAP; MYZAP-POLR2M
Mammalian Cell Selection:	Neomycin
Vector:	pCMV6-Entry (PS100001)
E. coli Selection:	Kanamycin (25 ug/mL)



[View online »](#)

**ORF Nucleotide Sequence:**

>RC223018 representing NM\_001018090  
 Red=Cloning site Blue=ORF Green=Tags(s)

TTTTGTAATACGACTCACTATAGGGCGGCCGGGAATTCGTCGACTGGATCCGGTACCGAGGAGATCTGCC  
 GCC**CGCATCGCC**

ATGCTGCGCTCCACGTCCACGGTACCCTGCTCTCGGGCGGCCGCCAGGACGCCCGGGCGCCAGCA  
 GGAGGGCAAATGTTTGCAGACTACGGCTGACCGTACCTCCTGAGAGTCCAGTTCTGAGCAATGTGAAAA  
 GAAGATTGAGAGAAAAGAGCAGCTTCTTACCTGAGCAATGGAGAACCTACCAGGAACTTCTCAGGGT  
 GTTGTTTATGGTGTGGTGCAGATCAGATCAAAATCAGCAGAAAAGAAATGGTGGTGTATGGGTGGTCCA  
 CCAGTCAGCTGAAAGAAGAGATGAACTACATCAAAGATGTGAGAGCCACTTTGAAAAAGGTGAGAAAGCG  
 AATGTATGGAGACTATGATGAGATGAGACAGAAGATTGACAGCTCACCCAGGAATATCAGTTTCCCAT  
 GCTCAGCAGGAGTATCTGGAGAATCACATCCAACCCAGTCGTCTGCCCTGGATCGTTTTAATGCCATGA  
 ACTCAGCCTTGGCATCAGATTCCATTGGCTGCAAAAAACCTCGTGGATGTGACTTTGAAAAACAGCAA  
 CATTAAAGGATCAAATCAGAAATCTGCAGCAGACGTATGAAGCATCCATGGACAAGCTGAGGGAAAAGCAG  
 AGGCAGTTGGAGGTAGCGCAAGTTGAAAACCAGCTGCTAAAAATGAAGGTGGAATCGTCCCAAGAAGCCA  
 ATGCTGAGGTGATGCGAGAGATGACCAAGAAGCTGTACAGCCAGTATGAGGAGAAGCTGCAGGAAGAACA  
 GAGGAAGCACAGTCTGAGAAGGAGGCTCTTTGGAAGAAACCAATAGTTTTCTGAAAGCGATTGAAGAA  
 GCCAATAAAAAGATGCAAGCAGCAGAGATCAGCCTAGAGGAGAAAAGACCAGAGGATCGGGGAGCTGGACA  
 GGCTGATTGAGCGCATGGAAAAGGAACGTCATCAACTGCAACTTCAACTCCTAGAACATGAAACAGAAAT  
 GTCTGGGAGTTAACTGATTCTGACAAGGAAAGGTATCAGCAGTTGGAGGAGGCATCAGCCAGCCTCCGT  
 GAGCGGATCAGACACCTAGATGACATGGTGCATTGCCAGCAGAAGAAAGTCAAGCAGATGGTTCGAGGAGA  
 TTGAATCATTAAAGAAAAAGTTGCAACAGAAAACAGCTCTTAATACTGCAGCTTTTAGAAAAGATATCTTT  
 CTTAGAAGGAGAGAATAATGAACTACAAAAGCAGTTGGACTATTTAACAGAAAACCCAGGCCAAGACTGAA  
 GTGAAAACCAGAGAGATAGGAGTGGGCTGTGATCTTCTACCCAGTTACTTTTGACAAAAATGATTTCAT  
 CTAGTCATTGCCAGAAGAGTGGGCTCCTATTTCTCAGAAGAGCGGGCGGCAGGGATAAGCAGCATCT  
 TGATGACATCACAGCAGCTCGGCTTCTACCACTTACCATATGCCACGCAGCTGCTCTCCATAGAAGAA  
 TCCTTGGCACTTCAAGAACAGCAGAAAACAGAAATTATGAGGAGATGCAAGCAAAGCTCGCAGCGCAAAAAT  
 TAGCTGAAAGACTGAATATTTAAATGCGGAGTTATAATCCAGAAGGGAGTCTTCAGGGAGATACCGAGA  
 AGTAAGGGATGAAGATGACGATTGGTCTCTGATGAATTC

**ACGCGT**ACGCGGCCGCTCGAGCAGAAAACCTCATCTCAGAAGAGGATCTGGCAGCAAATGATATCCTGGATT  
 ACAAGGATGACGACGATAAGGTTTAA

**Protein Sequence:**

>RC223018 representing NM\_001018090  
 Red=Cloning site Green=Tags(s)

MLRSTSTVTLSSGGAARTPGAPSRANVRLRLTVPPESPVPEQCEKKIERKEQLLDLSNGEPTRKLPQG  
 VVYGVVRRSDQNQQKEMVVYGWSTSQLKEEMNYIKDVRATLEKVRKRMYGDYDEMQRKIRQLTQELSVSH  
 AQQEYLENHIQTQSSALDRFNAMNSALASDSIGLQKTLVDVTLNSNIKQIRNLQQTYEASMDKLREKQ  
 RQLEVAQVENQLLKMKESSQEAANAEMREMTKKLYSQYEEKLQEEQRKHSAAKEALLEETNSFLKAIIE  
 ANKKMQAAEISLEEKDQRIGELDRLIERMEKERHQLQLLLEHETEMSELTDSDKERYQLEEASASLR  
 ERIRHLDDMVHCQKQKVKQMVVEIESLKKKLQKQLLILQLLEKISFLEGENNELQSRLDYLTTETQAKTE  
 VETREIGVGDLLPRLPFRQNDSSSHCQKSGSPISSEERRRRDKQHLLDDITAARLLPLHHMPTQLLSIEE  
 SLALQKQKQNYEEMQAKLAAQKLAERLNIKMRSYNPEGESSGRYREVRDEDDDDWSSDEF

**TR**TRPLEQKLISEEDLAANDILDYKDDDDKV

**Chromatograms:**

[https://cdn.origene.com/chromatograms/mk8066\\_g07.zip](https://cdn.origene.com/chromatograms/mk8066_g07.zip)

**Restriction Sites:**

Sgfl-Mlul

**Cloning Scheme:**


**ACCN:** NM\_001018090

**ORF Size:** 1650 bp

**OTI Disclaimer:** Due to the inherent nature of this plasmid, standard methods to replicate additional amounts of DNA in E. coli are highly likely to result in mutations and/or rearrangements. Therefore, OriGene does not guarantee the capability to replicate this plasmid DNA. Additional amounts of DNA can be purchased from OriGene with batch-specific, full-sequence verification at a reduced cost. Please contact our customer care team at [custsupport@origene.com](mailto:custsupport@origene.com) or by calling 301.340.3188 option 3 for pricing and delivery.

The molecular sequence of this clone aligns with the gene accession number as a point of reference only. However, individual transcript sequences of the same gene can differ through naturally occurring variations (e.g. polymorphisms), each with its own valid existence. This clone is substantially in agreement with the reference, but a complete review of all prevailing variants is recommended prior to use. [More info](#)

**OTI Annotation:** This clone was engineered to express the complete ORF with an expression tag. Expression varies depending on the nature of the gene.

**Components:** The ORF clone is ion-exchange column purified and shipped in a 2D barcoded Matrix tube containing 10ug of transfection-ready, dried plasmid DNA (reconstitute with 100 ul of water).

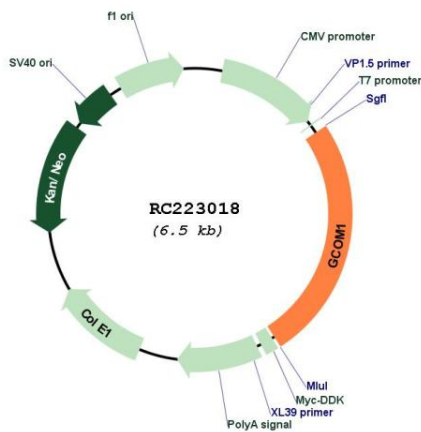
- Reconstitution Method:**
1. Centrifuge at 5,000xg for 5min.
  2. Carefully open the tube and add 100ul of sterile water to dissolve the DNA.
  3. Close the tube and incubate for 10 minutes at room temperature.
  4. Briefly vortex the tube and then do a quick spin (less than 5000xg) to concentrate the liquid at the bottom.
  5. Store the suspended plasmid at -20°C. The DNA is stable for at least one year from date of shipping when stored at -20°C.

**RefSeq:** [NM\\_001018090.4](#)

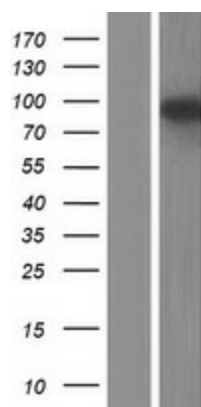
RefSeq Size: 4664 bp  
 RefSeq ORF: 1653 bp  
 Locus ID: 145781  
 UniProt ID: [P0CAP1](#)  
 Cytogenetics: 15q21.3  
 Protein Families: Druggable Genome  
 MW: 63.9 kDa

**Gene Summary:** This locus represents naturally occurring readthrough transcription between the neighboring MYZAP (myocardial zonula adherens protein) and POLR2M (polymerase (RNA) II (DNA directed) polypeptide M) genes on chromosome 15. Alternative splicing results in multiple readthrough transcript variants. Readthrough variants may encode proteins that share sequence identity with the upstream gene product or with both the upstream and downstream gene products. Some readthrough transcript variants are also expected to be candidates for nonsense-mediated decay (NMD). [provided by RefSeq, Oct 2013]

**Product images:**



Circular map for RC223018



Western blot validation of overexpression lysate (Cat# [LY422649]) using anti-DDK antibody (Cat# [TA50011-100]). Left: Cell lysates from untransfected HEK293T cells; Right: Cell lysates from HEK293T cells transfected with RC223018 using transfection reagent MegaTran 2.0 (Cat# [TT210002]).