

Product datasheet for **RC223016**

ZNF133 (NM_001083330) Human Tagged ORF Clone

Product data:

Product Type:	Expression Plasmids
Product Name:	ZNF133 (NM_001083330) Human Tagged ORF Clone
Tag:	Myc-DDK
Symbol:	ZNF133
Synonyms:	pHZ-13; pHZ-66; ZNF150
Mammalian Cell Selection:	Neomycin
Vector:	pCMV6-Entry (PS100001)
E. coli Selection:	Kanamycin (25 ug/mL)



[View online »](#)

ORF Nucleotide
Sequence:

>RC223016 ORF sequence
Red=Cloning site Blue=ORF Green=Tags(s)

TTTTGTAATACGACTCACTATAGGGCGGCCGGAATTCGTCGACTGGATCCGGTACCGAGGAGATCTGCC
GCCCGCATCGCC

ATGGCATT CAGGGATGTGGCTGTGGATTTCACCCAGGATGAGTGGAGGCTGCTGAGCCCTGCTCAAAGGA
CTCTGTACAGAGAGGTGATGCTGGAGAACTACAGCAACCTGGTCTCACTGGGAATTTCAATTTCTAAACC
AGAACTCATCACCCAGCTGGAGCAAGGAAAGAGACCTGGAGAGAGGAAAAAATGTTACCCGCAACC
TGTCCAGATCCAGAGCCAGAGCTCTACCTCGATCCTTTCTGCCCTCCGGGTTTCTCCAGTCAGAAATTC
CCATGCAGCATGTGCTGTGTAATCATCCCCCTGGATCTTACATGCTTGTGTCAGAAGGTAACATCCA
GCCTGGGGATCCAGGCCAGGGGACCAGGAGAAGCAGCAACAAGCCTCTGAGGGGAGACCCTGGAGTGAT
CAAGCAGAAGTCTGAGGGAGAAGGTGCCATGCCTTTGTTTGAAGAACCAAGAAAAGGACTCTGGGAG
CGTTCTCCAGGCCACCCAGAGGCAGCCAGTCAGCTCTCGGAACGGCCTCAGAGGGGTGGAGTTAGAAGC
CAGCCCAGCTCAGACAGGGAACCTGAGGAAACAGACAAATTGTTGAAGAGGATAGAAGTCTTAGGATTT
GGAACAGTCAACTGTGGAGAGTGTGGACTGAGCTTCAGCAAGATGACAAACCTGCTCAGTACCAGCGGA
TACACTCAGGGGAGAAGCCCTACGTGTGTGGGGTATGTGAGAAGGGCTTACGCCTAAAGAAGAGCCTCGC
CAGACACCAGAAGGCACACTCGGGGAGAAGCCAATTGTGTGCAGGGAGTGTGGACGAGGCTTTAACCGG
AAGTCAACGCTAATCATACACGAACGGACACACTCCGGTGAGAAACCTTACATGTGCAGTGTGGGCT
GAGGCTTCAGCCAGAAGTCAAACCTCATCATACACCAGAGGACACACTCAGGGGAAAAGCCTTATGTGTG
CCGGGAATGTGGCAAAGGCTTCAGCCAGAAGTCAGCTGTCTGTGAGACACCAGAGGACACACTTGGAGGAG
AAGACCATCGTGTGCAGTACTGTGGCTGGGCTTCAGCGACAGGTCAAACCTCATCTCCACCAGAGGA
CGCACTCTGGGGAGAAGCCCTACGCCTGCAAGGAGTGTGGGCGATGCTTCAGGCAGAGGACCACCTTGT
CAACCACCAGAGGACACACTCAAAGGAGAAGCCCTATGTGTGCGGGGTGTGTGGGCACAGCTTCAGCCAG
AATTCAACCTCATCTCTCACAGCGGACACACTGGGGAGAAGCCGTATGTTTGTGGGGTGTGTGGGC
GAGGCTTTAGTCTCAAGTCACACCTCAACAGACACCAGAACATACACTCAGGAGAGAAGCCATTGTGTG
CAAGGACTGTGGCCGGGGCTTCAGCCAGCAATCCAACCTCATCAGACACCAGAGGACGCACTCAGGCGAG
AAGCCCATGGTGTGTGGGAGTGCGGGCGAGGCTTCAGCCAGAAGTCAAACCTTGTGTCACACCAGAGGA
CGCACTCAGGGGAGAGCCGTATGTGTGCCGAGAGTGCGGGCGAGGCTTTAGCCACCAGGCCGTCTCAT
CAGGCACAAGCGAAGCACTCGAGGGAGAAGCCCTACATGTGCAGGCAGTGTGGACTGGGCTTTGGCAAT
AAGTCAGTCTAATCACACACAAGCGGGCTCACTCGGAAGAGAAGCCTTGTGTGTGCAGAGAGTGTGGCC
AAGGCTTTCTCCAAAAGTCACACCTCACCTTACATCAAATGACACATACGGGGGAGAAGCCATATGTGTG
CAAGACGTGTGGGCGGGGCTTCAGCCTCAAGTCTCACCTCAGCAGACACAGGAAGACCACGTCTGTCCAC
CACAGACTGCCAGTGCAGCCGACCCTGAGCCGTGTGCAGGGCAACCTTCGGATTCTTATACTCTCTC

ACGCGTACGCGGCCGCTCGAGCAGAACTCATCTCAGAAGAGGATCTGGCAGCAATGATATCCTGGATT
ACAAGGATGACGACGATAAGGTTTAA

Protein Sequence: >RC223016 protein sequence
 Red=Cloning site Green=Tags(s)

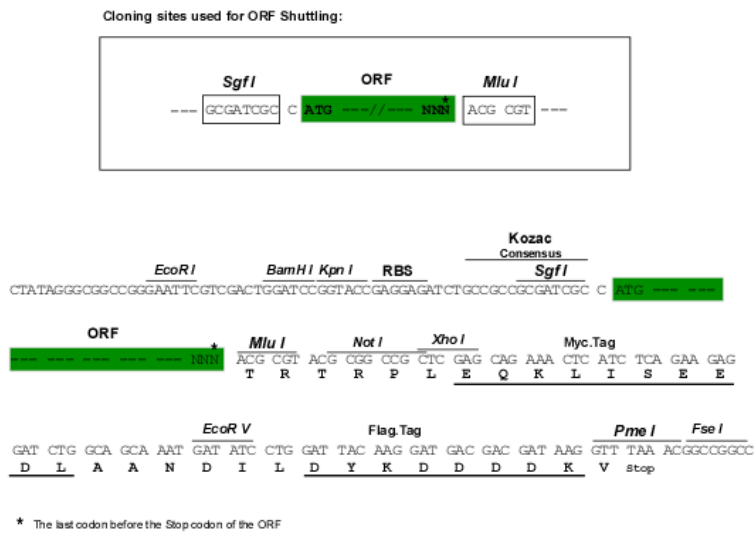
MAFRDVAVDFTQDEWRLLSPAQRTLYREVMLNENYNSLVSLGISFSKPELITQLEQKQETWREKKCPAT
 CPDPEPELYLDPFCPPGFSSQKFPMQHVLNHNPPWIFTCLCAEGNIQPGDPGPDQEKQQQASEGRPWS
 QAEGPEGEGAMPLFGRTRKRTLGAFSRPPQRQPVSSRNLGRGVELEASPAQTGNPEETDKLLKRIEVLGF
 GTVNCGECGLSFSKMTNLLSHQRIHSGEKPYVCGVCEKGFSLKSLARHQKAHSGEKPIVCRECGRGFNR
 KSTLIHERTHSGEKPYMCSECGRGSQKSNLIIHQRTHSGEKPYVCRECGKGSQKSAVVRHQRTHEE
 KTIVCSDCGLGFSRSNLIHQRTHSGEKPYACECGRCFRQRTTLVNHQRTHSKEKPYVCGVCGHSFSQ
 NSTLISHRRHTGKPYVCGVCGRGSLSKSHLNHRHQNIHSGEKPIVCKDCGRGSQSNLIRHQRTHSGE
 KPMVCGECGRGSQKSNLVAHQRTHSGERPYVCRECGRGFSHQAGLIRHKRHSREKPYMCRQCGLGFGN
 KSALITHKRAHSEKPCVCRECGQGLQKSHLTLHQMTHTGKPYVCKTCGRGFSLSKSHLSRHRKTTSVH
 HRLPVQPDPEPCAGQPSDSL YSL

TRTRPLEQKLISEEDLAANDILDYKDDDDKV

Chromatograms: https://cdn.origene.com/chromatograms/mk6588_c05.zip

Restriction Sites: SgfI-MluI

Cloning Scheme:



ACCN: NM_001083330

ORF Size: 1959 bp

OTI Disclaimer: The molecular sequence of this clone aligns with the gene accession number as a point of reference only. However, individual transcript sequences of the same gene can differ through naturally occurring variations (e.g. polymorphisms), each with its own valid existence. This clone is substantially in agreement with the reference, but a complete review of all prevailing variants is recommended prior to use. [More info](#)

OTI Annotation: This clone was engineered to express the complete ORF with an expression tag. Expression varies depending on the nature of the gene.

Components: The ORF clone is ion-exchange column purified and shipped in a 2D barcoded Matrix tube containing 10ug of transfection-ready, dried plasmid DNA (reconstitute with 100 ul of water).

Reconstitution Method:

1. Centrifuge at 5,000xg for 5min.
2. Carefully open the tube and add 100ul of sterile water to dissolve the DNA.
3. Close the tube and incubate for 10 minutes at room temperature.
4. Briefly vortex the tube and then do a quick spin (less than 5000xg) to concentrate the liquid at the bottom.
5. Store the suspended plasmid at -20°C. The DNA is stable for at least one year from date of shipping when stored at -20°C.

RefSeq: [NM_001083330.4](#)

RefSeq Size: 2500 bp

RefSeq ORF: 1962 bp

Locus ID: 7692

UniProt ID: [P52736](#)

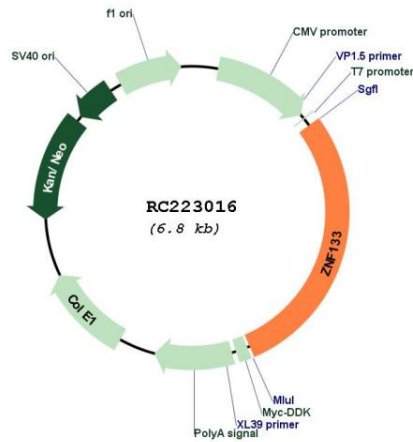
Cytogenetics: 20p11.23

Protein Families: Transcription Factors

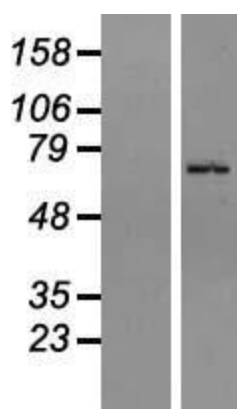
MW: 73.3 kDa

Gene Summary: May be involved in transcriptional regulation as a repressor.[UniProtKB/Swiss-Prot Function]

Product images:



Circular map for RC223016



Western blot validation of overexpression lysate (Cat# [LY421213]) using anti-DDK antibody (Cat# [TA50011-100]). Left: Cell lysates from untransfected HEK293T cells; Right: Cell lysates from HEK293T cells transfected with RC223016 using transfection reagent MegaTran 2.0 (Cat# [TT210002]).