

Product datasheet for RC223009

EID1 (NM_014335) Human Tagged ORF Clone

Product data:

Product Type: Expression Plasmids
Product Name: EID1 (NM_014335) Human Tagged ORF Clone
Tag: Myc-DDK
Symbol: EID1
Synonyms: C15orf3; CRI1; EID-1; IRO45620; PNAS-22; PTD014; RBP21
Mammalian Cell Selection: Neomycin
Vector: pCMV6-Entry (PS100001)
E. coli Selection: Kanamycin (25 ug/mL)
ORF Nucleotide Sequence: >RC223009 ORF sequence
 Red=Cloning site Blue=ORF Green=Tags(s)

TTTTGTAATACGACTCACTATAGGGCGGCCGGAATTCGTCGACTGGATCCGGTACCGAGGAGATCTGCC
GCC**CGATCGCC**

ATGTCGGAATGGCTGAGTTGTCCGAGCTGTATGAAGAGAGCAGTGACCTGCAGATGGATGTGATGCCTG
GCGAGGGTGACCTCCGCAGATGGAGGTAGGCAGCGGGAGCCGGGAGCTATCCCTGCGTCCCTCCCGCAG
CGGGGCCAACAGCTCGAGGAGGAAGGCCAATGGAGGAGGAGGAGGCCAGCCAATGGCGGCCAGAG
GGAAACGGAGCCTTGTAAACGGGCCAACGCTGGGAGCAGCCAGGCCAGGTGGCGGGCGCAGACTTCG
AGAGCGAGGACGAGGGCGAGGAATTTGATGACTGGGAGGACGACTACGACTATCCCGAAGAGGAGCAGCT
CAGTGGTGCCGGCTACAGAGTATCAGCCGCTTTGAAGAAGCCGACAAGATGTTTCTGAGAACAAGAGAA
CCAGCCCTGGATGGCGGGTTTCAGATGCATTATGAGAAGACCCGTTTGATCAGTTAGCTTTTATCGAAG
AGCTTTTTTCACTGATGGTTGTCAATCGTCTGACCGAAGAAGCTCGGCTGTGATGAGATTATTGATAGAGA
G

ACGCGTACGCGGCCGCTCGAGCAGAACTCATCTCAGAAGAGGATCTGGCAGCAAATGATATCCTGGATT
ACAAGGATGACGACGATAAGGTTTAA

Protein Sequence: >RC223009 protein sequence
 Red=Cloning site Green=Tags(s)

MSEMAELSEL YEESSDLQMDVMPGEGDLPQMEVSGSGSRELSLRPSRSGAQQLEEEGPMEEEEAQPMAAPE
GKRSLANGPNAGEQPGQVAGADFESEDEGEEFDDWEDDYDYPEEEQLSGAGYRVSAALEEADKMFRLTRE
PALDGGFQMHYEKTPFDQLAFIEELFSLMNVNRLTEELGCDEIIDRE

TRTRPLEQKLISEEDLAANDILDYKDDDDKV



[View online »](#)

Chromatograms: https://cdn.origene.com/chromatograms/mk6444_d07.zip

Restriction Sites: SgfI-MluI

Cloning Scheme:



ACCN: NM_014335

ORF Size: 561 bp

OTI Disclaimer: The molecular sequence of this clone aligns with the gene accession number as a point of reference only. However, individual transcript sequences of the same gene can differ through naturally occurring variations (e.g. polymorphisms), each with its own valid existence. This clone is substantially in agreement with the reference, but a complete review of all prevailing variants is recommended prior to use. [More info](#)

OTI Annotation: This clone was engineered to express the complete ORF with an expression tag. Expression varies depending on the nature of the gene.

Components: The ORF clone is ion-exchange column purified and shipped in a 2D barcoded Matrix tube containing 10ug of transfection-ready, dried plasmid DNA (reconstitute with 100 ul of water).

Reconstitution Method:

1. Centrifuge at 5,000xg for 5min.
2. Carefully open the tube and add 100ul of sterile water to dissolve the DNA.
3. Close the tube and incubate for 10 minutes at room temperature.
4. Briefly vortex the tube and then do a quick spin (less than 5000xg) to concentrate the liquid at the bottom.
5. Store the suspended plasmid at -20°C. The DNA is stable for at least one year from date of shipping when stored at -20°C.

RefSeq: [NM_014335.3](#)

RefSeq Size: 2096 bp

RefSeq ORF: 564 bp

Locus ID: 23741

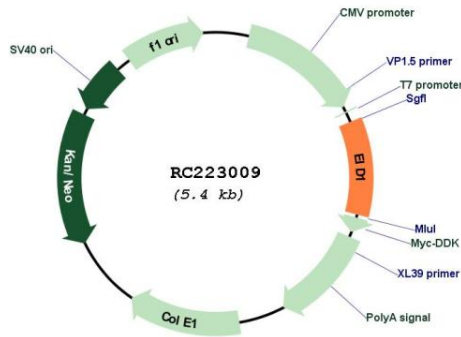
UniProt ID: [Q9Y6B2](#)

Cytogenetics: 15q21.1

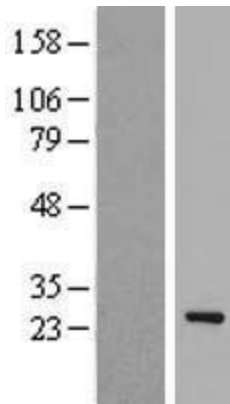
MW: 20.9 kDa

Gene Summary: Interacts with RB1 and EP300 and acts as a repressor of MYOD1 transactivation. Inhibits EP300 and CBP histone acetyltransferase activity. May be involved in coupling cell cycle exit to the transcriptional activation of genes required for cellular differentiation. May act as a candidate coinhibitory factor for NR0B2 that can be directly linked to transcription inhibitory mechanisms.[UniProtKB/Swiss-Prot Function]

Product images:



Circular map for RC223009



Western blot validation of overexpression lysate (Cat# [LY415352]) using anti-DDK antibody (Cat# [TA50011-100]). Left: Cell lysates from untransfected HEK293T cells; Right: Cell lysates from HEK293T cells transfected with RC223009 using transfection reagent MegaTran 2.0 (Cat# [TT210002]).