

Product datasheet for RC223007L1

C1R (NM_001733) Human Tagged Lenti ORF Clone

Product data:

Product Type:	Expression Plasmids
Product Name:	C1R (NM_001733) Human Tagged Lenti ORF Clone
Tag:	Myc-DDK
Symbol:	C1R
Synonyms:	EDSPD1
Mammalian Cell Selection:	None
Vector:	pLenti-C-Myc-DDK (PS100064)
E. coli Selection:	Chloramphenicol (34 ug/mL)
ORF Nucleotide Sequence:	The ORF insert of this clone is exactly the same as(RC223007).
Restriction Sites:	SgfI-MluI
Cloning Scheme:	

Cloning sites used for ORF Shuttling:



* The last codon before the Stop codon of the ORF.

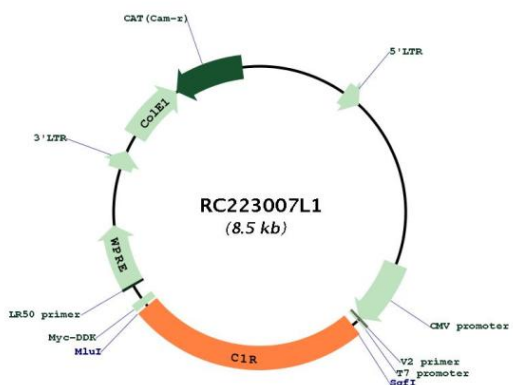
ACCN:	NM_001733
ORF Size:	2115 bp



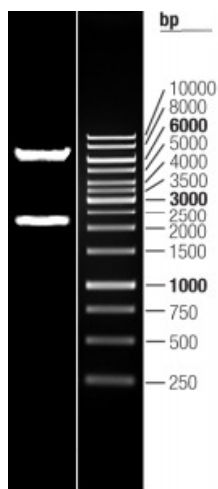
[View online »](#)

OTI Disclaimer:	The molecular sequence of this clone aligns with the gene accession number as a point of reference only. However, individual transcript sequences of the same gene can differ through naturally occurring variations (e.g. polymorphisms), each with its own valid existence. This clone is substantially in agreement with the reference, but a complete review of all prevailing variants is recommended prior to use. More info
OTI Annotation:	This clone was engineered to express the complete ORF with an expression tag. Expression varies depending on the nature of the gene.
Components:	The ORF clone is ion-exchange column purified and shipped in a 2D barcoded Matrix tube containing 10ug of transfection-ready, dried plasmid DNA (reconstitute with 100 ul of water).
Reconstitution Method:	<ol style="list-style-type: none">1. Centrifuge at 5,000xg for 5min.2. Carefully open the tube and add 100ul of sterile water to dissolve the DNA.3. Close the tube and incubate for 10 minutes at room temperature.4. Briefly vortex the tube and then do a quick spin (less than 5000xg) to concentrate the liquid at the bottom.5. Store the suspended plasmid at -20°C. The DNA is stable for at least one year from date of shipping when stored at -20°C.
RefSeq:	NM_001733.4
RefSeq Size:	2526 bp
RefSeq ORF:	2118 bp
Locus ID:	715
UniProt ID:	P00736
Cytogenetics:	12p13.31
Domains:	CCP, CUB, Tryp_SPc, EGF_CA, EGF
Protein Families:	Druggable Genome, Protease
Protein Pathways:	Complement and coagulation cascades, Systemic lupus erythematosus
MW:	80 kDa
Gene Summary:	This gene encodes a member of the peptidase S1 protein family. The encoded protein is a proteolytic subunit in the complement system C1 complex. The complement system acts as a mediator in the innate immune response by ultimately triggering phagocytosis, inflammation, and rupturing the bacterial cell wall. Mutations in this gene are associated with Ehlers-Danlos Syndrome. [provided by RefSeq, Dec 2018]

Product images:



Circular map for RC223007L1



Double digestion of RC223007L1 using SgfI and MluI