

Product datasheet for **RC223007**

C1R (NM_001733) Human Tagged ORF Clone

Product data:

Product Type:	Expression Plasmids
Product Name:	C1R (NM_001733) Human Tagged ORF Clone
Tag:	Myc-DDK
Symbol:	C1R
Synonyms:	EDSPD1
Mammalian Cell Selection:	Neomycin
Vector:	pCMV6-Entry (PS100001)
E. coli Selection:	Kanamycin (25 ug/mL)



[View online »](#)

ORF Nucleotide Sequence:

>RC223007 representing NM_001733
 Red=Cloning site Blue=ORF Green=Tags(s)

TTTTGTAATACGACTCACTATAGGGCGGCCGGGAATTCGTCGACTGGATCCGGTACCGAGGAGATCTGCC
 GCC**CGCATCGCC**

ATGTGGCTCTGTACCTCCTGGTCCCGCCCTGTCTGCAGGGCAGGAGGCTCCATTCATCCCTCAGA
 AGTTATTTGGGGAGGTGACTTCCCTCTGTTCCCAAGCCTTACCCAACAACCTTTGAAACAACCACTGT
 GATCACAGTCCCCACGGGATACAGGGTGAAGCTCGTCTTCCAGCAGTTTACCTGGAGCCTTCTGAAGGC
 TGCTTCTATGATTATGTCAAGATCTCTGCTGATAAGAAAAGCCTGGGGAGGTTCTGTGGGCAACTGGGTT
 CTCCACTGGGCAACCCCGGAAAGAAGGAATTTATGTCCCAAGGGAACAAGATGCTGCTGACCTTCCA
 CACAGACTTCTCCAACGAGGAGAATGGGACCATCATGTTCTACAAGGGCTTCTGGCCTACTACCAAGCT
 GTGGACCTTGATGAATGTGCTTCCCGGAGCAAATCAGGGGAGGAGGATCCCCAGCCCCAGTGCCAGCACC
 TGTGTCACAACACTCGTTGGAGGCTACTTCTGTTCTGCCGTCCAGGCTATGAGCTTCAGGAAGACAGGCA
 TTCTGCCAGGCTGAGTGCAGCAGCGAGCTGTACACGGAGGCATCAGGCTACATCTCCAGCTGGAGTAC
 CCTCGGTCTACCCCTGACCTGCGCTGCAACTACAGCATCCGGGTGGAGCGGGGCCCTCACCTGCACC
 TCAAGTTCCTGGAGCCTTTTGATATTGATGACCACCAGCAAGTACACTGCCCTATGACCAGCTACAGAT
 CTATGCCAACGGGAAGAACATTGGCGAGTTCTGTGGGAAGCAAAGGCCCCCGACCTCGACACCAGCAGC
 AATGCTGTGGATCTGCTGTTCTTACAGATGAGTCGGGGGACAGCCGGGGCTGGAAGCTGCGCTACACCA
 CCGAGATCATCAAGTCCCCAGCCCAAGACCCTAGACGAGTTACCATCATCCAGAACCTGCAGCCTCA
 GTACCAGTTCCTGACTACTTATTGCTACCTGCAAGCAAAGGCTACCAGCTCATAGAGGGGAACCAAGGTG
 CTGCATTCCTTACAGCTGTCTGCCAGGATGATGGCACGTGGCATCGTCCATGCCAGATGCAAGATCA
 AGGACTGTGGGAGCCCGAAACCTGCCTAATGGTGACTTCCGTTACACCACCAATGGGAGTGAACAC
 CTACAAGGCCCGTATCCAGTACTACTGCCATGAGCCATATTACAAGATGCAGACCAGAGCTGGCAGCAGG
 GAGTCTGAGCAAGGGGTGTACACCTGCACAGCACAGGGCATTGGGAAGAATGAACAGAAGGGAGAGAAGA
 TTCTCGGTGCTTCCAGTGTGTGGGAAGCCCGTGAACCCCGTGAACAGAGGCAGCGCATCATCGGAGG
 GCAAAAAGCCAAGATGGGCAACTTCCCCTGGCAGGTGTTACCAACATCCAGGGCGCGGGGGCGGGGCC
 CTGCTGGGCGACCGTGGATCCTCACAGCTGCCACACCCTGTATCCCAAGGAACACGAAGCGCAAAGCA
 ACGCCTCTTTGGATGTGTTCTGGGCCACACAAATGTGGAAGAGCTCATGAAGCTAGGAAATCACCCCAT
 CCGCAGGGTCAGCGTCCACCCGGACTACCGTCAGGATGAGTCTACAATTTGAGGGGGACATCGCCCTG
 CTGGAGCTGGAAAATAGTGTACCCTGGGTCCCAACCTCTCCCATCTGCCTCCCTGACAACGATACCT
 TCTACGACCTGGGCTTGATGGGCTATGTGAGTGGCTTCGGGGTCATGGAGGAGAAGATTGCTCATGACCT
 CAGGTTTGTCCGTCTGCCGTAGCTAATCCACAGGCCTGTGAGAACTGGCTCCGGGGAAAGAATAGGATG
 GATGTGTTCTCTCAAACATGTTCTGTGCTGGACACCCATCTCTAAAGCAGGACGCTGCCAGGGGGATA
 GTGGGGCGTTTTTGAGTAAGGGACCCGAACACTGATCGCTGGGTGGCCACGGGCATCGTGTCTGGGG
 CATCGGTGCAGCAGGGGCTATGGCTTCTACACCAAAGTGCTCAACTACGTGGACTGGATCAAGAAAAGAG
 ATGGAGGAGGAGGAC

ACGCGTACGCGGCCGCTCGAGCAGAAACTCATCTCAGAAGAGGATCTGGCAGCAAATGATATCCTGGATT
 ACAAGGATGACGACGATAAGGTTTAA

Protein Sequence: >RC223007 representing NM_001733
Red=Cloning site Green=Tags(s)

```
MWLLYLLVPALFCRAGGSIPQPQLFGEVTSPLFPKPYPNNFETTTVITVPTGYRVKLVFQQFDLEPSEG
CFYDYVKISADKKSLSGRFCGQLGSPNGPPGKKEFMSQGNKMLLTFHTDFNEENGTIMFYKGLAYYQA
VDLDECASRSKSGEEDPQPQCQHLCHNYVGGYFCSCRPGYELQEDRHSCQAECSSELYTEASGYISSLEY
PRSYPPDLRCNYSIRVERGLTLHLKFLPEPFDIDDHQVHCPYDQLQIYANGKNIGFCGKQRPPDLTSS
NAVDLLFFTDES GDSRGWKLRYTTEIIKCPQPKTLDFTI IQNLQPQYQFRDYFIATCKQYQLIEGNQV
LHSFTAVCQDDGTWHRAMPCKIKDCGQPRNLPNGDFRYTTMTMGVNTYKARIQYYCHEPYKMQTRAGSR
ESEQGVYTCTAQGIWKNEQKGEKIPRCLPVCCKPVNPVEQRRIIGGQKAKMGNFPWQVFTNIHGRGGGA
LLGDRWILTAHTLYPKEHEAQSASLDFLGHNTVEELMKLGNHPIRRVSHPDYRQDESYNFEGDIAL
LELENSVTLGPNLLPICLPDNDTFYDLGLMGYVSGFGVMEEKIAHDLRFVRLPVANPQACENWLRGKNRM
DVFSQNMFCAGHPSLKQDACQGDSSGGVFAVRDPNTDRWVATGIVSWGIGCSRGYGYTKVLNYVDWIKKE
MEEED
```

TRTRPLEQKLI SEEDLAANDILDYKDDDDKV

Chromatograms: https://cdn.origene.com/chromatograms/mk6162_c05.zip

Restriction Sites: SgfI-MluI

Cloning Scheme:

Cloning sites used for ORF Shuttling:



* The last codon before the Stop codon of the ORF

ACCN: NM_001733

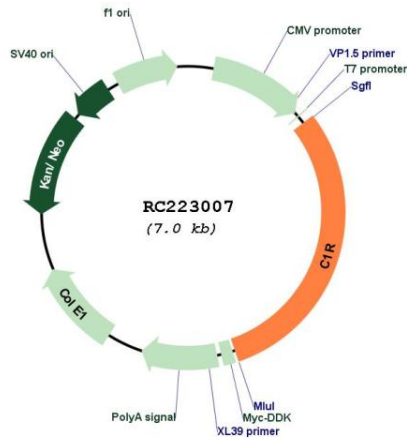
ORF Size: 2115 bp

OTI Disclaimer: The molecular sequence of this clone aligns with the gene accession number as a point of reference only. However, individual transcript sequences of the same gene can differ through naturally occurring variations (e.g. polymorphisms), each with its own valid existence. This clone is substantially in agreement with the reference, but a complete review of all prevailing variants is recommended prior to use. [More info](#)

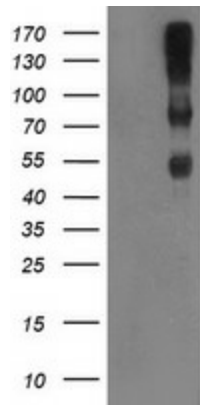
OTI Annotation: This clone was engineered to express the complete ORF with an expression tag. Expression varies depending on the nature of the gene.

Components:	The ORF clone is ion-exchange column purified and shipped in a 2D barcoded Matrix tube containing 10ug of transfection-ready, dried plasmid DNA (reconstitute with 100 ul of water).
Reconstitution Method:	<ol style="list-style-type: none">1. Centrifuge at 5,000xg for 5min.2. Carefully open the tube and add 100ul of sterile water to dissolve the DNA.3. Close the tube and incubate for 10 minutes at room temperature.4. Briefly vortex the tube and then do a quick spin (less than 5000xg) to concentrate the liquid at the bottom.5. Store the suspended plasmid at -20°C. The DNA is stable for at least one year from date of shipping when stored at -20°C.
RefSeq:	NM_001733.7
RefSeq Size:	2526 bp
RefSeq ORF:	2118 bp
Locus ID:	715
UniProt ID:	P00736
Cytogenetics:	12p13.31
Domains:	CCP, CUB, Tryp_SPc, EGF_CA, EGF
Protein Families:	Druggable Genome, Protease
Protein Pathways:	Complement and coagulation cascades, Systemic lupus erythematosus
MW:	80 kDa
Gene Summary:	This gene encodes a member of the peptidase S1 protein family. The encoded protein is a proteolytic subunit in the complement system C1 complex. The complement system acts as a mediator in the innate immune response by ultimately triggering phagocytosis, inflammation, and rupturing the bacterial cell wall. Mutations in this gene are associated with Ehlers-Danlos Syndrome. [provided by RefSeq, Dec 2018]

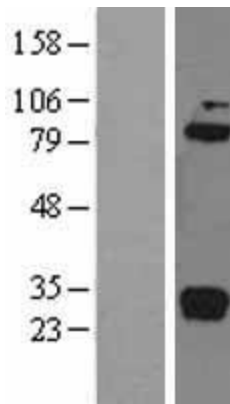
Product images:



Circular map for RC223007



HEK293T cells were transfected with the pCMV6-ENTRY control (Cat# [PS100001], Left lane) or pCMV6-ENTRY C1R (Cat# RC223007, Right lane) cDNA for 48 hrs and lysed. Equivalent amounts of cell lysates (5 ug per lane) were separated by SDS-PAGE and immunoblotted with anti-C1R antibody (Cat# [TA800085]). Positive lysates [LY400654] (100ug) and [LC400654] (20ug) can be purchased separately from OriGene.



Western blot validation of overexpression lysate (Cat# [LY400654]) using anti-DDK antibody (Cat# [TA50011-100]). Left: Cell lysates from untransfected HEK293T cells; Right: Cell lysates from HEK293T cells transfected with RC223007 using transfection reagent MegaTran 2.0 (Cat# [TT210002]).