

Product datasheet for RC223004

C1QTNF12 (NM_001014980) Human Tagged ORF Clone

Product data:

Product Type:	Expression Plasmids
Product Name:	C1QTNF12 (NM_001014980) Human Tagged ORF Clone
Tag:	Myc-DDK
Symbol:	C1QTNF12
Synonyms:	C1QDC2; CTRP12; FAM132A
Mammalian Cell Selection:	Neomycin
Vector:	pCMV6-Entry (PS100001)
E. coli Selection:	Kanamycin (25 ug/mL)
ORF Nucleotide Sequence:	>RC223004 representing NM_001014980 Red=Cloning site Blue=ORF Green=Tags(s)

TTTTGTAATACGACTCACTATAGGGCGGCCGGAATTCGTCGACTGGATCCGGTACCGAGGAGATCTGCC
GCC**CGGATCGCC**

ATGCGGCGCTGGGCTGGGCCGCGGTCTGGTCTCTCGGGCCGCAGCTCGTGCTCTCGGGGGCGTCCG
GGGCCCGGCGGGAGGCACAGAGGACGCAGCAGCCTGGCCAGCGCGCAGATCCCCCAACGCCACCGCCAG
CGCGTCTCCCGCAGGGGCTGCCGAGGCCCCCAAGCCATCCCAGGCTCAGGACCTGAGTTCTCCGAC
GCCACATGACATGGCTGAACCTTGTCCGGCGGCCGACGACGGCGCTTAAGGAAGCGGTGCGGAAGCA
GGGACAAGAAGCCGCGGGATCTCTCGGTCCCCAGGACCTCCAGGTGCAGAAGTGACCGCGGAGACTCT
GCTTCACGAGTTTCAGGAGCTGCTGAAAGAGGCCACGGAGCGCCGTTCTCAGGGCTTCTGGACCCGCTG
CTGCCCCAGGGGGCGGGCTGCGGCTGGTGGGCGAGGCCTTCACTGCCGGCTGCAGGGTCCCCGCGGG
TGGACAAGCGGACGCTGGTGGAGCTGCATGGTTTCCAGGCTCTGCTGCCCAAGGTGCCTTCTGCGAGG
CTCCGGTCTGAGCCTGGCCTCGGGTCTGGTTCACGGCCCCGTGTCCGGCATCTTCCAGTTCTGCGCAGT
CTGCACGTGGACCACAGTGAGCTGCAGGGCAAGGCCCGGCTGCGGGCCCGGACGTGGTGTGTGTTCTCA
TCTGTATTGAGTCCCTGTGCCAGCGCCACACGTGCTGGAGGCCGTCTCAGGCTGGAGAGCAACAGCAG
GGTCTTACGCTACAGGTGCAGGGGCTGCTGCAGCTGCAGGCTGGACAGTACGCTTCTGTGTTTGTGGAC
AATGGTCCGGGGCGTCTCACCATCCAGGCGGGCTCCAGCTTCTCCGGGCTGCTCTGGGCACG

ACGCGTACGCGGGCGCTCGAGCAGAAACTCATCTCAGAAGAGGATCTGGCAGCAAATGATATCCTGGATT
ACAAGGATGACGACGATAAGGTTTAA



[View online »](#)

Protein Sequence: >RC223004 representing NM_001014980
Red=Cloning site Green=Tags(s)

MRRWAWAAVVLLGPQLVLLGGVGARREAQRTQQPGQRADPPNATASASSREGLPEAPKPSQASGPEFSD
 AHMTWLNFRPDDGALRKRCGSRDKKPRDLFGPPGPPGAEVTAETLLHEFQELLKEATERRFSGLLDPL
 LPQGAGLRLVGEAFHCRLLQGPRRVDKRTLVELHGFQAPAAQGAFLRGSGLSLASGRFTAPVSGIFQFSAS
 LHVDSHELQGKARLRARDVVVCLICIESLCQRHTCLEAVSGLESNSRVFTLQVQGLLQLQAGQYASVFD
 NGS GAVLTIQAGSSF SGLLLGT

TRTRPLEQKLISEEDLAANDILDYKDDDDKV

Chromatograms: https://cdn.origene.com/chromatograms/ja1266_f07.zip

Restriction Sites: SgfI-MluI

Cloning Scheme:

Cloning sites used for ORF Shuttling:



* The last codon before the Stop codon of the ORF

ACCN: NM_001014980

ORF Size: 906 bp

OTI Disclaimer: The molecular sequence of this clone aligns with the gene accession number as a point of reference only. However, individual transcript sequences of the same gene can differ through naturally occurring variations (e.g. polymorphisms), each with its own valid existence. This clone is substantially in agreement with the reference, but a complete review of all prevailing variants is recommended prior to use. [More info](#)

OTI Annotation: This clone was engineered to express the complete ORF with an expression tag. Expression varies depending on the nature of the gene.

Components: The ORF clone is ion-exchange column purified and shipped in a 2D barcoded Matrix tube containing 10ug of transfection-ready, dried plasmid DNA (reconstitute with 100 ul of water).

Reconstitution Method:

1. Centrifuge at 5,000xg for 5min.
2. Carefully open the tube and add 100ul of sterile water to dissolve the DNA.
3. Close the tube and incubate for 10 minutes at room temperature.
4. Briefly vortex the tube and then do a quick spin (less than 5000xg) to concentrate the liquid at the bottom.
5. Store the suspended plasmid at -20°C. The DNA is stable for at least one year from date of shipping when stored at -20°C.

RefSeq: [NM_001014980.3](#)

RefSeq Size: 1052 bp

RefSeq ORF: 909 bp

Locus ID: 388581

UniProt ID: [Q5T7M4](#)

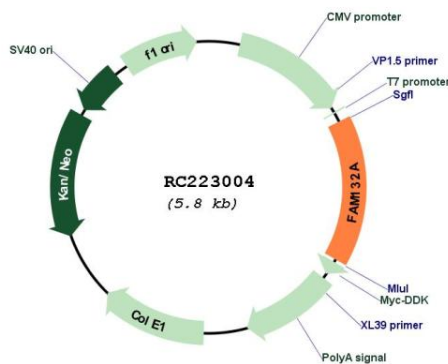
Cytogenetics: 1p36.33

Protein Families: Transmembrane

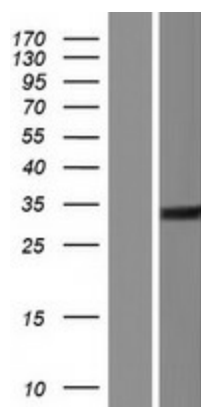
MW: 32.9 kDa

Gene Summary: Insulin-sensitizing adipocyte-secreted protein (adipokine) that regulates glucose metabolism in liver and adipose tissue. Promotes glucose uptake in adipocytes and suppresses de novo glucose production in hepatocytes via the PI3K-Akt signaling pathway. Administration lead to reduction of blood glucose. Able to attenuate inflammation in fat tissue.[UniProtKB/Swiss-Prot Function]

Product images:



Circular map for RC223004



Western blot validation of overexpression lysate (Cat# [LY423100]) using anti-DDK antibody (Cat# [TA50011-100]). Left: Cell lysates from untransfected HEK293T cells; Right: Cell lysates from HEK293T cells transfected with RC223004 using transfection reagent MegaTran 2.0 (Cat# [TT210002]).