

Product datasheet for **RC223002**

BRD8 (NM_139199) Human Tagged ORF Clone

Product data:

Product Type:	Expression Plasmids
Product Name:	BRD8 (NM_139199) Human Tagged ORF Clone
Tag:	Myc-DDK
Symbol:	BRD8
Synonyms:	p120; SMAP; SMAP2
Mammalian Cell Selection:	Neomycin
Vector:	pCMV6-Entry (PS100001)
E. coli Selection:	Kanamycin (25 ug/mL)
ORF Nucleotide Sequence:	>RC223002 representing NM_139199 Red=Cloning site Blue=ORF Green=Tags(s)

TTTTGTAATACGACTCACTATAGGGCGGCCGGAATTCGTCGACTGGATCCGGTACCGAGGAGATCTGCC
GCC**CGATCGCC**

ATGGCGACGGGAACGGGCAAACACAAGCTGCTAAGCACTGGCCCCACAGAGCCATGGTCCATCCGAGAGA
AGCTATGTTTAGCATCTTCTGTCATGAGAAGTGGCGATCAAAATTGGGTATCAGTTAGCAGAGCAATCAA
GCCCTTTCAGAACCTGGCCGCCCTCCAGACTGGTTCTCTCAAAAACATTGTGCTTCCAGTACTCGGAG
CTTTTAGAGACCACTGAGACACCAAAACGAAACGAGGTGAAAAGGAGAAGTGGTGAAACTGTTGAAG
ATGTTATTGTTTCGAAATTGACTGCTGAGCGAGTTGAAGAACTAAAGAAAGTGATAAAGGAAACCCAGGA
GAGATATAGACGGCTAAAGAGAGATGCAGAATAATTCAAGCTGGACACATGGACAGCAGACTGGATGAG
CTTTGCAATGACATTGCAACGAAAAAGAAATTGGAAGAAGAGGAGGCTGAAGTAAAGAGGAAGGCTACAG
ATGCTGCATACCAGGCTCGTCAAGCAGTAAAAACACCCCGGAGGTTACCCACTGTGATGGTTCGCTC
TCCTATAGATTCTGCCTCCCAGGAGGTGATTATCCACTTGGGGACTTGACTCCAACCACTATGGAAGAG
GCTACCTCTGGGGTCAATGAGAGTGAAATGGCTGTGGCTTCTGGCCACCTGAACAGTACAGGTGCTCCTCC
TGGAGGTAGGCGGGTCTTCCCATGATACATGGTGGGAGATACAGCAAACACCAATACTGTTGCAGC
CTCCCCTGCTGCATCAGGTGCTCCCACTCTTCCCGCTTTTGAAGCTGGTCTACACAGTTACCACA
CCTCTTGCTTCTTCACTACTGTTGCCAGTGAGCCTCCAGTTAACTTGTGCCACCCCTGTAGAGTCTG
TGTCCTCAAGCTACCATTGTCATGATGCCTGCGCTGCCAGCACCATCCTCTGCTCCGGCTGTCTCCACTAC
TGAAAGTGTAGCTCCAGTGAGTCAACCCGACAACCTGTGTTCCCATGGAGGCTGTGGGGATCCACATACT
GTGACTGTTTCCATGGACAGCAGTGAAATATCCATGATCATCAATTCTATCAAAGAAGAGTGTTTTCGAT
CAGGGGTAGCAGAGGCTCCTGTTGGATCAAAGGCTCCCAGCATAGATGGGAAGGAAGAAATTAGATCTGGC
TGAGAAGATGGATATTGCTGTGTCTTACACAGGTGAAGAGCTGGATTTTGAGACTGTTGGAGACATCATT
GCCATCATTGAGGACAAGGTAGATGATCCTGAAGTGTGGATGTGGCAGCAGTGAAGCAGCACTGT
CATTTTGTGAAGAAAATGATGATCCTCAGTCCCTGCCTGGCCCTGGGAGCATCCTATCCAGCAGGAGCG
GGACAAGCCAGTACCTCTCCCTGCACCAGAAATGACGGTCAAGCAAGAGAGACTGGACTTTGAGGAAACG



[View online »](#)

GAAAACAAGGAATACATGAACTGGTGGACATCAGGGAGCCCAGTGCAGAGATCAAGGTGGAACCTGCAG
AACCCAGAGCCAGTCATTTCCAGGAGCCGAAATAGTAGCTGGAGTTGTTCCAGCCACAAGTATGGAGCCACC
AGAAGCTCAGGAGTCCAGGACTTAGATGAGGAACTGGGAAGTACTGCAGCTGGAGAGATTGTTGAAGCAGAT
GTTGCCATTGGGAAAGGCGATGAGACTCCACTTACAAATGTGAAGACAGAGGCATCCCCTGAAAGCATGT
TGTCTCCATCACATGGCTCAAATCCCATTGAAGATCCTTTAGAGGCAGAGACTCAGCACAAGTTTGAAT
GTCAGACTCATTGAAAGAAGAATCAGGGACTATTTTTGGAAGCCAGATAAAGGATGCCCCAGGTGAGGAT
GAGGAGGAAGATGGTGTGAGTGAAGCGGCCAGCCTAGAGGAGCCTAAGGAAGAGGATCAAGGAGAAGGCT
ACTTGTACAGAAATGGATAATGAACCTCCTGTGAGCGAGAGTGATGATGGCTTCAGCATACACAATGCTAC
ACTGCAGTCACACACACTGGCAGACTCCATCCCCAGCAGCCCTGCTTCTTACAGTTCTCTGTCTGTAGT
GAGGATCAGGAAGCTATTCAGGCACAGAAAATTTGGAAGAAAGCCATCATGCTTGTATGGAGAGCTGCAG
CTAATCATAGGTATGCCAATGTCTTCTGCAGCCTGTTACAGATGACATAGCACCTGGCTACCACAGCAT
TGTGCAGAGGCCATGGATTTGTCAACTATTAAGAAAAACATAGAAAATGGACTGATCCGAAACACAGCT
GAATTTACAGCGTGACATTATGCTGATGTTTCAGAAATGCTGTAATGTACAATAGCTCAGACCATGATGCT
ATCACATGGCAGTGGAGATGCAGCGAGATGCTTGGAACAGATCCAGCAATTCCTGGCCACGCGATTGAT
TATGCAAAACATCCGAGTCTGGGATCAGTGCTAAAAGTCTTCGAGGGAGAGATTCTACCCGAAACAGGAT
GCTTCAGAGAAGGACAGTGTCCCAATGGGCTCTCTGCCTTCTTCTCTCTCTTTATGGGACACGAGT
GGGTTTGGCTGGATTCTGAACAAGATCATCCCAATGACTCTGAGTTGAGCAATGACTGCAGGTCCCTCTT
CAGCTCATGGGACTCCAGTCTGGATCTTGTATGTGGGCAACTGGAGGGAACTGAGGATCCAGAGGCTGAG
GAACTAGAGGAAAGCAGCCCGGAGAGAGAACCTAGTGAAGTCTTGTGGGGATGGAGGCAGTGAGGAAT
CTCAGGAAGCGGCAAGGAAAGCCAGCCACCAGAACCTCCTCCACTTTCTCTCTGAGGTAGCTTATTTAAT
GGAGCCCTTGTGCATCAGCAGCAACGAATCAAGTGAAGGCTGCTGCCCTCCATCTGGTACCAGACAAGAA
GGAAGGGAAATTAAGCTAGCGAAGGAGAAAGGGAGCTCTGCAGAGAGACTGAAGAGCTTTCAGCTAAAG
GAGACCCCTTAGTAGCTGAAAAGCCACTGGGAGAAAAATGGAAGCCAGAGGTGGCTTCAGCTCCCTCAGT
TATTTGTACAGTTCAGGGACTACTCACAGAGAGTGAAGAGGGGGAGGCTCAGCAAGAATCCAAAGGGGAG
GACCAGGGTGAAGTATATGTGTGAGAGATGGAAGACCAGCCCTTCAGGCGAGTGTGATGATGCCTTTA
ACATTAAGGAGACTCCCTTGGTGGATACACTTTTCAGCCATGCTACCTCCTCAAAGCTGACTGATCTAAG
CCAGGATGACCCTGTTCCAGGATCATTGCTATTTAAGAAGACTCTCCTGCCAGTCTGGAAGATGATTGCC
AGTCACAGGTTCCAGCAGTCCATTTCTGAAGCCTGTGTGAGAAAGGCAGGCCCCAGGGTACAAGGATGTGG
TGAAAAGACCCATGGACTTAACTAGCCTGAAGAGAAATCTCTCTAAGGGTCGGATTGCGACCATGGCCCA
ATTCCTGCGAGACCTGATGCTGATGTTCCAAAATGCTGTAATGTACAATGACTCTGATCATCATGTATAC
CATATGGCTGTGGAGATCGGGCAGAGTCTGGAGCAGATTGAGTACTGAATATCTGGTTAGACAAA
GAAAAGGCTCAAGTAGTCTGGAAGGAGAACCAGCTAACCCAGTGGATGATGGAAAACCTGTTTTTC

ACGCGTACGCGGCCGCTCGAGCAGAACTCATCTCAGAAGAGGATCTGGCAGCAAATGATATCCTGGATT
ACAAGGATGACGACGATAAGGTTTAA

Protein Sequence: >RC223002 representing NM_139199
 Red=Cloning site Green=Tags(s)

MATGTGKHKLLSTGPTEPWSIREKLCLASSVMRSGDQNWVSVSRAIKPFAEPGRPPDWFSSQKHCASQYSE
 LLETTETPKRKRGEKGEVVETVEDVIVRKLTAERVEELKVKIKETQERYRRLKRDAELIQAGHMDSRLDE
 LCNDIATKKKLEEEAEVKRKATDAAYQARQAVKTPPRLPTVMVRSPIDSASPGGDYPLGDLTPTTMEE
 ATSGVNESEMAVASGHLNSTGVLLEVGVLPMIHGGEIQQTPTNTVAASPAASGAPTLRRLLEAGPTQFTT
 PLASFTTVASEPPVKLVPPPVEVSQATIVMMPALPAPSSAPAVSTTESVAPVSQPDNCVPMEAVGDPHT
 VTVSMDSSSEISMIINSIKEECFRSGVAEAPVGSKAPSIDGKEELDLAEKMDIAVSYTGEELDFETVGDII
 AIIEDKVDDHPEVLDVAAVEAALSFCENDDPQSLPGPWEHPIQQERDKPVPLPAPEMTVKQERLDFEET
 ENKGIHELVDIREPSAEIKVEPAEPEPVISGAEIVAGVVPATSMPEPPELRSQDLDEELGSTAAGEIVEAD
 VAIGKGDTEPLTNVKTEASPESMLSPSHGSPNIEDPLEAETQHKFEMSDSLKEESGTFGSQIKDAPGED
 EEEDGVSEAAASLEEKEDQEGEYLSEMDNEPPVSESDDGFSIHNATLQSHTLADSIPSSPASSQFVSCS
 EDQEAIQAQKIWKKAIMLVWRAAANHRYANVFLQPVTDIAPGYHSIVQRPMDLSTIKKNIENGLIRSTA
 EFQRDIMLMFQNAVMYNSSDHDVYHMAVEMQRDVLEQIQQLATQLIMQTSSESGISAKSLRGRDSTRKQD
 ASEKDSVPMGSPAFLLSLFMGHEWVWLDSEQDHPNDELSDNCRSLFSSWDSLDLVDVGNWRETEPEAE
 ELEESSPEREPSELLVGDGGSEESQEAARKASHQNLHFLSEVAYLMEPLCISSNESSEGCCPPSGTRQE
 GREIKASEGERELCRETEELSAKGDPLVAEKPLGENGKPEVASAPSVICTVQGLL TESEEGEAQQESKGE
 DQGEVYVSEMEDQPPSGECDDAFNIKETPLVDTLF SHATSSKL TDLSQDDPVQDHL LFKKTL LPVWKMIA
 SHRFSSPFLKPVSERQAPGYKDVVKRPMDL TSLKRNL SKGRIRTMAQFLRDLMLMFQNAVMYNDSDDHHVY
 HMAVEMRREVLEQIQVLNIWLDKRKGSSSLEGE PANPVDDGKPVF

TRTRPLEQKLISEEDLAANDILDYKDDDDKV

Chromatograms: https://cdn.origene.com/chromatograms/mk6683_b01.zip

Restriction Sites: SgfI-MluI

Cloning Scheme:

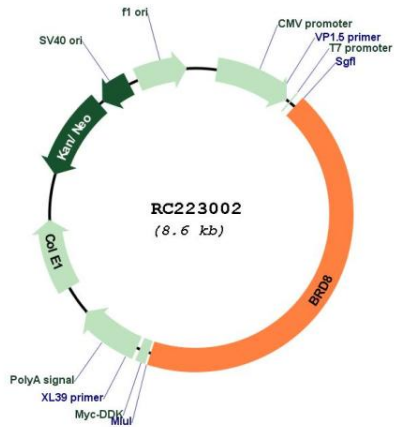


ACCN: NM_139199

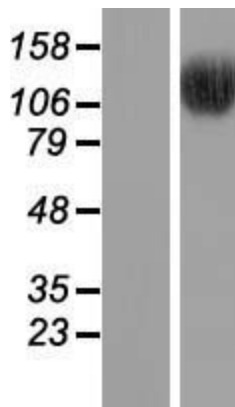
ORF Size: 3705 bp

OTI Disclaimer:	The molecular sequence of this clone aligns with the gene accession number as a point of reference only. However, individual transcript sequences of the same gene can differ through naturally occurring variations (e.g. polymorphisms), each with its own valid existence. This clone is substantially in agreement with the reference, but a complete review of all prevailing variants is recommended prior to use. More info
OTI Annotation:	This clone was engineered to express the complete ORF with an expression tag. Expression varies depending on the nature of the gene.
Components:	The ORF clone is ion-exchange column purified and shipped in a 2D barcoded Matrix tube containing 10ug of transfection-ready, dried plasmid DNA (reconstitute with 100 ul of water).
Reconstitution Method:	<ol style="list-style-type: none">1. Centrifuge at 5,000xg for 5min.2. Carefully open the tube and add 100ul of sterile water to dissolve the DNA.3. Close the tube and incubate for 10 minutes at room temperature.4. Briefly vortex the tube and then do a quick spin (less than 5000xg) to concentrate the liquid at the bottom.5. Store the suspended plasmid at -20°C. The DNA is stable for at least one year from date of shipping when stored at -20°C.
RefSeq:	NM_139199.1 , NP_631938.1
RefSeq Size:	4074 bp
RefSeq ORF:	3708 bp
Locus ID:	10902
UniProt ID:	Q9H0E9
Cytogenetics:	5q31.2
Protein Families:	Druggable Genome, Transcription Factors
MW:	135.2 kDa
Gene Summary:	The protein encoded by this gene interacts with thyroid hormone receptor in a ligand-dependent manner and enhances thyroid hormone-dependent activation from thyroid response elements. This protein contains a bromodomain and is thought to be a nuclear receptor coactivator. Multiple alternatively spliced transcript variants that encode distinct isoforms have been identified. [provided by RefSeq, Jul 2014]

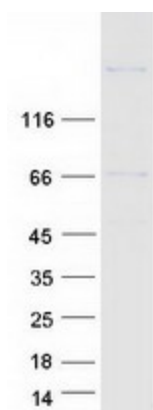
Product images:



Circular map for RC223002



Western blot validation of overexpression lysate (Cat# [LY408349]) using anti-DDK antibody (Cat# [TA50011-100]). Left: Cell lysates from untransfected HEK293T cells; Right: Cell lysates from HEK293T cells transfected with RC223002 using transfection reagent MegaTran 2.0 (Cat# [TT210002]).



Coomassie blue staining of purified BRD8 protein (Cat# [TP323002]). The protein was produced from HEK293T cells transfected with BRD8 cDNA clone (Cat# RC223002) using MegaTran 2.0 (Cat# [TT210002]).