

Product datasheet for **RC222998**

ERGIC1 (NM_020462) Human Tagged ORF Clone

Product data:

Product Type:	Expression Plasmids
Product Name:	ERGIC1 (NM_020462) Human Tagged ORF Clone
Tag:	Myc-DDK
Symbol:	ERGIC1
Synonyms:	endoplasmic reticulum-golgi intermediate compartment (ERGIC) 1; endoplasmic reticulum-golgi intermediate compartment 32 kDa protein; ERGIC-32; ERGIC32; ERGIC32, ERGIC-32, KIAA1181, MGC14345; FLJ39864; KIAA1181; MGC14345
Mammalian Cell Selection:	Neomycin
Vector:	pCMV6-Entry (PS100001)
E. coli Selection:	Kanamycin (25 ug/mL)
ORF Nucleotide Sequence:	>RC222998 representing NM_020462 Red=Cloning site Blue=ORF Green=Tags(s)

TTTTGTAATACGACTCACTATAGGGCGGCCGGAATTCGTCGACTGGATCCGGTACCGAGGAGATCTGCC
GCC**CGGATCGCC**

ATGGAACGTTGGGCCATCGCTGTGAACGAGCTCTATGTCGATGACCCAGACAAGGACAGCGGTGGCAAGA
TCGACGTCAGTCTGAACATCAGTTTACCCAATCTGCACTGCGAGTTGGTTGGGCTTGACATTCAGGATGA
GATGGGCAGGCACGAAGTGGGCCACATCGACAACCTCCATGAAGATCCCGCTGAACAATGGGGCAGGCTGC
CGCTTCGAGGGGAGTTTCAGCATCAACAAGGTATGGAAGCCCTGCCTCAGCCCTTCTACCTGCTCCCT
TTCCTGCTGTCTCCCGCTCCCTGGAACTGGTTGTGGAGGCACTCACTCGACCTGACCCTGACACAGCC
CCCAGCAAGCGAGGGTTCGTGTCCAGCTGCCTGGCCGTTCTGCTGAGAATCTGGATGGGGTCCAGGCT
CCCTGGGGTTTTAAGCCCTGATGGCTGGTTCAGGAAGGACTACTCTTCTCTCCAG

ACGCGTACGCGGCCGCTCGAGCAGAACTCATCTCAGAAGAGGATCTGGCAGCAAATGATATCCTGGATT
ACAAGGATGACGACGATAAGGTTTAA

Protein Sequence:	>RC222998 representing NM_020462 Red=Cloning site Green=Tags(s)
-------------------	--

MERWAMRVNEL YVDDPKDSGGKIDVSLNISLPNLHCELVGLDIQDEMGRHEVGHIDNSMKIPLNNGAGC
RFEGQFSINKVWKPCLSPFYLLPFAVSPLPGNWLWRHSLDLTLTQPPASEGSCPAAWPFLRLRIWMGVQA
PWGFKPLMAGSGRSYSSLQ

TRTRPLEQKLISEEDLAANDILDYKDDDDKV



[View online »](#)

Chromatograms: https://cdn.origene.com/chromatograms/ja1462_e05.zip

Restriction Sites: SgfI-MluI

Cloning Scheme:



ACCN: NM_020462

ORF Size: 477 bp

OTI Disclaimer: The molecular sequence of this clone aligns with the gene accession number as a point of reference only. However, individual transcript sequences of the same gene can differ through naturally occurring variations (e.g. polymorphisms), each with its own valid existence. This clone is substantially in agreement with the reference, but a complete review of all prevailing variants is recommended prior to use. [More info](#)

OTI Annotation: This clone was engineered to express the complete ORF with an expression tag. Expression varies depending on the nature of the gene.

Components: The ORF clone is ion-exchange column purified and shipped in a 2D barcoded Matrix tube containing 10ug of transfection-ready, dried plasmid DNA (reconstitute with 100 ul of water).

Reconstitution Method:

1. Centrifuge at 5,000xg for 5min.
2. Carefully open the tube and add 100ul of sterile water to dissolve the DNA.
3. Close the tube and incubate for 10 minutes at room temperature.
4. Briefly vortex the tube and then do a quick spin (less than 5000xg) to concentrate the liquid at the bottom.
5. Store the suspended plasmid at -20°C. The DNA is stable for at least one year from date of shipping when stored at -20°C.

RefSeq: [NM_020462.1](#), [NP_065195.1](#)

RefSeq Size: 3969 bp

RefSeq ORF: 479 bp

Locus ID: 57222

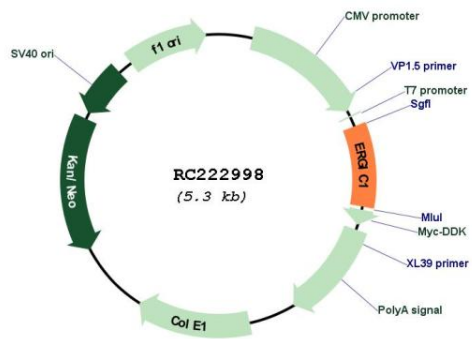
Cytogenetics: 5q35.1

Protein Families: Transmembrane

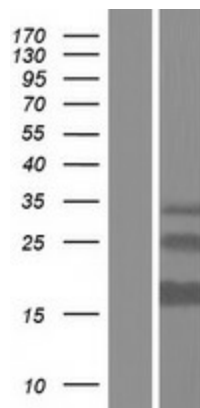
MW: 18.2 kDa

Gene Summary: This gene encodes a cycling membrane protein which is an endoplasmic reticulum-golgi intermediate compartment (ERGIC) protein which interacts with other members of this protein family to increase their turnover. [provided by RefSeq, Jul 2008]

Product images:



Circular map for RC222998



Western blot validation of overexpression lysate (Cat# [LY412466]) using anti-DDK antibody (Cat# [TA50011-100]). Left: Cell lysates from untransfected HEK293T cells; Right: Cell lysates from HEK293T cells transfected with RC222998 using transfection reagent MegaTran 2.0 (Cat# [TT210002]).