

Product datasheet for **RC222991**

AOC2 (NM_009590) Human Tagged ORF Clone

Product data:

Product Type:	Expression Plasmids
Product Name:	AOC2 (NM_009590) Human Tagged ORF Clone
Tag:	Myc-DDK
Symbol:	AOC2
Synonyms:	DAO2; RAO; SSAO
Mammalian Cell Selection:	Neomycin
Vector:	pCMV6-Entry (PS100001)
E. coli Selection:	Kanamycin (25 ug/mL)



[View online »](#)

ORF Nucleotide Sequence:

>RC222991 representing NM_009590
 Red=Cloning site Blue=ORF Green=Tags(s)

TTTTGTAATACGACTCACTATAGGGCGGCCGGGAATTCGTCGACTGGATCCGGTACCGAGGAGATCTGCC
 GCC**CGGATCGCC**

ATGCATCTCAAGATAGTCTGGCGTTCCTGGCACTGTCCCTCATTACCATCTTTCGCTGGCCTATGTTT
 TGCTGACCAGCCCAGGTGGTCCAGCCAGCCTCCCCTGCTGTATCCCATAGGGCCAGCCCTG
 GCCACACCCTGGCCAGAGCCAGCTGTTTGCAGACCTGAGCCGAGAGGAGTTGACAGCTGTGATGCGCTT
 CTGACCCAGCGGCTGGGGCCAGGGCTGGTGGACGACGCCAGGCTCAGCCCTCGGACAACTGCATCTTCT
 CAGTGGAGCTGCAGCTGCCCCCAAGGCTGCAGCCCTGGCCACCTGGACAGGGGAGCCCCCACCTGC
 CCGGGAGGCACTGGCCATCGTCTCTTTGGTGGACAACCCCAACCAATGTGAGTGAGCTGGTGGTGGG
 CCGCTGCCTACCCCTCGTACATGCGGGATGTGACTGTGGAGCGTCACGGCGGGCCCTGCCCTATACC
 GTCGCCCGGTGCTGAGAGCTGAGTTTACACAGATGTGGAGGCATCTGAAAGAGGTGGAGCTACCCAAGG
 ACCCATCTTCTGTCGTCACCTTCAACTACAATGGCTCTACCCTGGCAGCTGTGCATGCCACCCCTCGG
 GGCTTGGCCTCAGGGGACCGAGCTACCTGGATGGCCCTACCATAACATCTCAGGGGTTGGTCTTTTCC
 TTCACCCCGTGGGGCTGGAGCTACTACTGGACCACAGGGCCCTGGACCCTGCCACTGGACTGTCCAGCA
 GGTCTTCTACCTTGGGCACTACTATGCAGACTTGGGCCAGTTGGAACGGGAGTTTAACTCTGGCCGGTTG
 GAAGTGGTTAGAGTCCCTCTACCTCCACCAATGGAGCTTCATCCCTGAGGTCTCGGAACTCTCCAGGTC
 CTCTTCCCCCTTTCAGTTCTCGCCCCAGGGTTCACAGTACAGTGTGCAAGGAACTGGTGGTATCCTC
 CCTCTGGTCATTTACCTTGGCCATGGGGTGTTCAGCGCCCTGAGGATTTTGTGTTCCGGTCCAGGGT
 GAGCGAATAGCCTATGAAGTCAAGTGTCCAGGAGTGTATCTATCTATGTTGCCGATTACCCAAGACGA
 TGCTGACTCGCTATTTGGATAGCAGCTTTGGACTCGGCCGTAACAGCCGAGGCTTGGTGGGGGAGTGGA
 CTGCCCTATCAAGCCAGATGGTGGACATCCATATATTAGTGGGCAAAGGGGAGTCCAGCTGCTTCCA
 GGGGCTGTGTGTATTTGAGGAAGCCAGGGACTGCCCTTCAAGGCACCACAATTACCTTCAAATC
 ATTTCTATGGTGGTTTGGCCAGCTCAGCCCTTGTGGTCAGGTCTGTGTCATCTGTGGCAACTATGACTA
 CATTTGGGACTTTGTGTTGTACCAAAATGGGGCACTTGAAGGGCGGGTCCATGCCACGGTTATATCAAC
 ACAGCTTTCCTGAAAGGGGGAGAGGAGGGCCTCCTTTGGGAACCGTGTGGGGAAAGAGTGTGGGAA
 CGGTGCACACACATGCCCTCCACTTCAAGCTGGACCTGGATGTGGCAGGGCTGAAAACTGGGTGGTAGC
 TGAAGACGTGGTGTAAACCTGTGGCTGCCCTGGAACCCGGAGCACTGGCTACAGCGCCACAGCTG
 ACTCGGCAGGTCCTGGGAAAGGAGGACCTGACAGCTTTTCTTGGGAAGCCCCCTACCCGCTACCTCT
 ACCTGGCTAGCAACCAGACTAATGCGTGGGGTACCAGCGCGGGTACCGAATCCAGATCCACAGCCCTT
 TGGCATACACATACCCCTGGAGAGTGACATGGAGAGGGCCCTCAGCTGGGGGAGATACCAGCTTGTGGT
 ACCCAGAGAAAGGAGGAGGAGTACAGAGCAGTAGCATCTATCACCAGAAATGACATCTGGACACCCACAG
 TTACCTTTGCTGACTTCAACAATGAAACCCTTTAGGAGAGGATCTGGTGGCTTGGGTACAGCCAG
 CTTCTGCACATTTCCCATGCCGAGGACATCCCAACACAGTACTCTGGGGAACAGAGTTGGCTTCTTG
 CTCCGACCCTATAACTTCTTTGATGAGGACCCCTCCATCTTCTCCCTGGCAGTGTCTACTTTGAGAAGG
 GCCAGGATGCTGGGCTCTGCAGCATCAATCCTGTGGCTGCCTCCCCGACCTGGCAGCCTGTGTCCCGGA
 CTTACCCCTTTCTTACCACGGCTTC

ACGCGTACGCGGCCGCTCGAGCAGAACTCATCTCAGAAGAGGATCTGGCAGCAAATGATATCCTGGATT
 ACAAGGATGACGACGATAAGGTTTAA

Protein Sequence: >RC222991 representing NM_009590
Red=Cloning site Green=Tags(s)

```
MHLKIVLAFALSLITIFALAYVLLTSPGGSSQPPHCPSVSHRAQPWPHPGSQFLFADLSREELTAVMRF
LTQRLGPGLVDAQAQPSDNCIFSVLQLPCKAAALHLDRGSPPPAREALAIIVLFGGQPQPNVSELVVG
PLPHPSYMRDVTVERHGGPLPYHRRPVLRAEFTQMWRHLKEVELPKAPIFLSSTFNNGSTLAAVHATPR
GLRSGDRATWMLYHNISGVGLFLHPVGLELLLDHRALDPAHWTVQQVFYLGHYYADLGQLEREFKSGRL
EVVRVPLPPPNGASSLRNSPGPLPPLQFSPQGSQYSVQGNLVVSSLWSFTFGHGVFSGRLIFDVRVQGG
ERIAEYVSQECVSIYGADSPKTMTRYLDSSFGGLGRNSRGLVRGVDCPYQATMVDIHILVKGAVQLLP
GAVCVFEEAQGLPLRRHHNYLQNHFYGGGLASSALVVRSVSSVGNVYDIWDFVLYPNGALEGRVHATGYIN
TAFKGGEEGLFGNRVGERVLGTVHTAFHFKLDLVDVAGLKNWVAEDVVFKPVAAPWNPEHWLQRPQL
TRQVLGKEDLTAFLGSPLPRYLALASQTNAGHQYRIQIHSPLGIHIPLESDMERALSWSGRYQLVV
TQRKEEESQSSSIYHQNDIWTPTVTFADFNNETLLGEDLVAVVTASFHLHIPHAEDIPNTVTLGNRVGFL
LRPNYFDEDDPSIFSPGSVYFEKGQDAGLCSINPVACLPDLAACVPDLPPFSYHGF
```

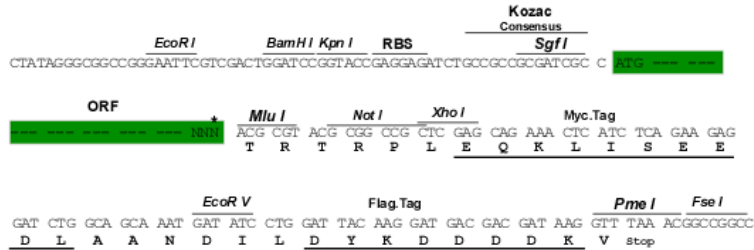
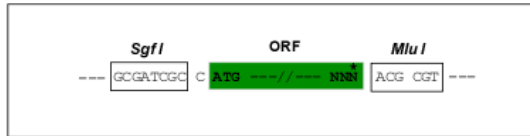
TRTRPLEQKLISEEDLAANDILDYKDDDDKV

Chromatograms: https://cdn.origene.com/chromatograms/mk6488_b05.zip

Restriction Sites: SgfI-MluI

Cloning Scheme:

Cloning sites used for ORF Shuttling:



* The last codon before the Stop codon of the ORF

ACCN: NM_009590

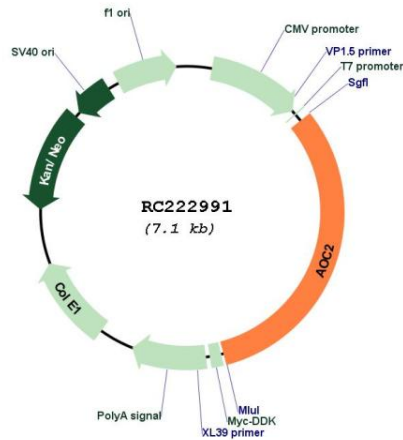
ORF Size: 2268 bp

OTI Disclaimer: The molecular sequence of this clone aligns with the gene accession number as a point of reference only. However, individual transcript sequences of the same gene can differ through naturally occurring variations (e.g. polymorphisms), each with its own valid existence. This clone is substantially in agreement with the reference, but a complete review of all prevailing variants is recommended prior to use. [More info](#)

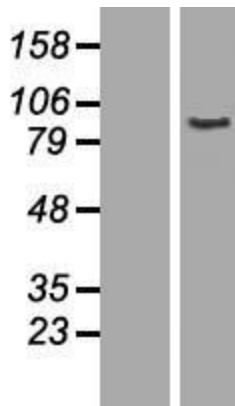
OTI Annotation: This clone was engineered to express the complete ORF with an expression tag. Expression varies depending on the nature of the gene.

Components:	The ORF clone is ion-exchange column purified and shipped in a 2D barcoded Matrix tube containing 10ug of transfection-ready, dried plasmid DNA (reconstitute with 100 ul of water).
Reconstitution Method:	<ol style="list-style-type: none">1. Centrifuge at 5,000xg for 5min.2. Carefully open the tube and add 100ul of sterile water to dissolve the DNA.3. Close the tube and incubate for 10 minutes at room temperature.4. Briefly vortex the tube and then do a quick spin (less than 5000xg) to concentrate the liquid at the bottom.5. Store the suspended plasmid at -20°C. The DNA is stable for at least one year from date of shipping when stored at -20°C.
RefSeq:	NM_009590.4
RefSeq Size:	2681 bp
RefSeq ORF:	2271 bp
Locus ID:	314
UniProt ID:	O75106
Cytogenetics:	17q21.31
Protein Families:	Transmembrane
Protein Pathways:	beta-Alanine metabolism, Glycine, serine and threonine metabolism, Metabolic pathways, Phenylalanine metabolism, Tyrosine metabolism
MW:	83.5 kDa
Gene Summary:	Copper amine oxidases catalyze the oxidative conversion of amines to aldehydes and ammonia in the presence of copper and quinone cofactor. This gene shows high sequence similarity to copper amine oxidases from various species ranging from bacteria to mammals. The protein contains several conserved motifs including the active site of amine oxidases and the histidine residues that likely bind copper. It may be a critical modulator of signal transmission in retina, possibly by degrading the biogenic amines dopamine, histamine, and putrescine. This gene may be a candidate gene for hereditary ocular diseases. Alternate splicing results in multiple transcript variants. [provided by RefSeq, Jul 2008]

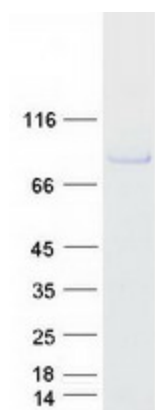
Product images:



Circular map for RC222991



Western blot validation of overexpression lysate (Cat# [LY416008]) using anti-DDK antibody (Cat# [TA50011-100]). Left: Cell lysates from untransfected HEK293T cells; Right: Cell lysates from HEK293T cells transfected with RC222991 using transfection reagent MegaTran 2.0 (Cat# [TT210002]).



Coomassie blue staining of purified AOC2 protein (Cat# [TP322991]). The protein was produced from HEK293T cells transfected with AOC2 cDNA clone (Cat# RC222991) using MegaTran 2.0 (Cat# [TT210002]).