

Product datasheet for RC222989

ABL2 (NM_001100108) Human Tagged ORF Clone

Product data:

| | |
|---------------------------|--------------------------------------------------------------------------------|
| Product Type: | Expression Plasmids |
| Product Name: | ABL2 (NM_001100108) Human Tagged ORF Clone |
| Tag: | Myc-DDK |
| Symbol: | ABL2 |
| Synonyms: | ABLL; ARG; FLJ22224; FLJ31718; FLJ41441 |
| Mammalian Cell Selection: | Neomycin |
| Vector: | pCMV6-Entry (PS100001) |
| E. coli Selection: | Kanamycin (25 ug/mL) |
| ORF Nucleotide Sequence: | >RC222989 representing NM_001100108 Red=Cloning site Blue=ORF Green=Tags(s) |

TTTTGTAATACGACTCACTATAGGGCGGCCGGAATTCGTCGACTGGATCCGGTACCGAGGAGATCTGCC
GCC**CGATCGCC**

ATGGTCCTTGGGACAGTTCTCCTTCCACCTAATAGTTATGGCAGAGATCAGGACACTTCACTTTGCTGCC
TGTGCACTGAGGCCTCAGAATCTGCTCTACCCGACTTAACAGATCACTTTGCCAGCTGTGTGGAGGATGG
ATTTGAGGGAGACAAGACTGGAGGCAGTAGTCCAGAAGCTTTGCATCGTCCCTATGGTTGTGATGTTGAA
CCCCAGGCACTAAATGAGGCTATCAGGTGGAGCTCCAAGGAGAACTTGTCTGGAGCCACTGAGAGTGACC
CTAATCTCTTCGTTGCACCTTATGATTTGTAGCAAGTGGTGATAACACACTCAGCATCACTAAAGGTGA
AAAGCTACGAGTCCTTGGTTACAACCAGAATGGTGAGTGGAGTGAAGTTCGCTCTAAGAATGGGCAGGGC
TGGGTGCCAAGCAACTACATCACCCAGTGAACAGCCTGGAAAAACACTCCTGGTACCATGGACCTGTGT
CACGCAGTGCAGCTGAGTATCTGCTCAGCAGTCTAATCAATGGCAGCTTCTGGTGCGAGAAAGTGAGAG
TAGCCCTGGGCAGCTGTCCATCTCGCTCAGGTACGAGGGACGTGTGTATCACTACAGGATCAATACCACT
GCAGATGGCAAGGTGTATGTGACTGCTGAGAGCCGCTTCAGCACCTTGGCAGAGCTTGTACACCATCACT
CCACAGTGGCTGATGGGCTGGTGAACATTACACTACCCAGCACCAAGTGAATAAGCCTACAGTCTA
TGGTGTGTCCCCATCCACGACAAATGGGAAATGGAGCGAACAGATATTACCATGAAGCACAACCTTGGG
GGCGGTCAAGTATGGAGAGGTTTACGTTGGCGTCTGGAAGAAATACAGCCTTACAGTTGCTGTGAAAACAT
TGAAGGAAGATACCATGGAGGTAGAAGAATTCCTGAAAGAAGCTGCAGTAAATGAAGGAAATCAAGCATCC
TAATCTGGTACAACCTTTAGGTGTGTACTTTGGAGCCACCATTTTACATTGTGACTGAATACATGCCA
TACGGGAATTTGCTGGATTACCTCCGAGAATGCAACCGAGAAGAGGTGACTGCAGTTGTGCTGCTTACA
TGGCCACTCAGATTTCTTCTGCAATGGAGTACTTAGAGAAGAAGAATTTTCATCCATAGAGATCTTGCAGC
TCGTAAGTGCCTAGTGGGAGAAAACCATGTGGTAAAAGTGGCTGACTTTGGCTTAAGTAGATTGATGACT
GGAGACACTTATACTGCTCATGCTGGAGCCAAATTTCTATTAAGTGGACAGCACCAGAGAGTCTTGCCT
ACAATACCTTCTCAATTAATCTGACGTCTGGGCTTTTGGGTATTGTTGTGGGAAATTGCTACCTATGG
AATGTCACCATATCCAGGTATTGACCTGTCTCAGTCTATGACCTACTAGAAAAAGGATATCGAATGGAA

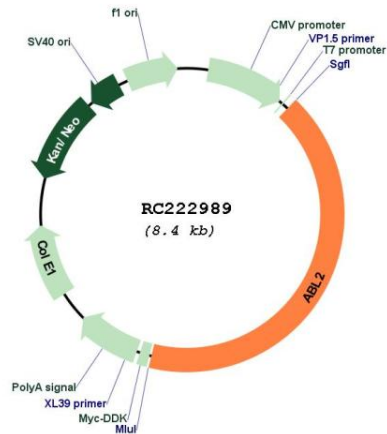


[View online »](#)

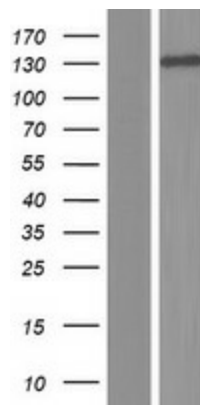
CAGCCTGAGGGATGCCCCCTAAGGTTTATGAACTTATGAGAGCATGCTGGAAGTGGAGCCCTGCCGATA
 GGCCCTCTTTTGTGAAACACACCAAGCTTTTAAACCATGTTCCATGACTCCAGCATTTCTGAAGAGGT
 AGCTGAGGAGCTTGGGAGAGCCGCTCCTCGTCATCTGTTGTTCCATACCTGCCCGGCTACCTATACTT
 CTTTCAAAGACTCGGACACTGAAGAAACAGGTGGAGAACAAGGAGAACATTGAAGGGGCACAAGATGCCA
 CAGAAAATTCTGCTTCCAGTTTAGCACCAGGGTTCATCAGAGGTGCACAGGCCTTAGTGGATCCCCAGC
 ACTGCCTCGAAAGCAAAGAGACAAGTCACCCAGCAGCCTTTGGAAGATGCCAAAGAGACATGCTTCACC
 AGGGATAGGAAGGGGGGCTTCTTCAGCTCCTTCATGAAGAAGAGAAATGCTCCTACACCCCCAAACGCA
 GCAGCTCCTTCCGAGAAAATGGAGAATCAGCCCCATAAGAAAATACGAACTCACGGGTAACCTTCTCATCTGT
 TGCTTCTCTACAGCATGCTGATGGGTTCTCTTTCACTCCTGCCAGCAAGAGGCGAATCTGGTGCCACCC
 AAGTGCTATGGGGGAGCTTTGCACAGAGGAACCTCTGTAATGACGACGGTGGTGGGGTGGGGGAGTGG
 GCACTGCTGGGGTGGTGGTCTGGCATCACAGGCTTCTTTACACCACGCTTAATCAAAAAGACTGGG
 CTTACGAGCAGGTAACCCACAGCCAGTATGACACTTCCAAGCCTTTTCCAAGTCAAACCTACATCT
 TCCATGTCCTCAGGGCTCCAGAGCAGGATAGGATGGCAATGACCCTTCCAGGAACTGCCAGAGGTCCA
 AACTCCAGCTGGAAGGACAGTGTCCACCTCTTCTCAGCCAGAAGAGAATGTGGACAGGGCCAATGACAT
 GCTTCAAAAAAATCAGAGGAAAGTGTCTCCAAGCAGGAGAGACCAAAAGCCAAGTTATTGCCGAGA
 GGAGCCACAGCTTCTCCTCAGAACACCTCTGGGGATCTAGCCATTACAGAGAAGGACCTCCAGGGG
 TGGGAGTGGCTGGAGTGGCAGCTGCCCCAAGGGTAAAGAGAAGAATGGTGGGGCACGACTTGGGATGGC
 TGGAGTTCCAGAGGATGGAGAGCAGCCGGGCTGGCCTTCTCCAGCCAAGGCTGCCCCGCTCCTCCAACC
 ACTCACAACCACAAAGTCCAGTCTTATCTCACCCACTCTGAAACACACTCCAGCTGACGTGCAGCTCA
 TTGGCACAGACTCTCAGGGGAATAAATCAAGCTTATCTGAGCATCAGGTCACATCCTCTGGAGACAA
 GGACCGACCCCGACGGGTAAAACCAAAGTGTGCCCCACCCACCACCAGTGATGAGACTACTGCAGCAT
 CCGTCCATCTGCTCAGACCCTACAGAAGAGCCAACCTGCCCTAACTGCAGGACAGTCCACATCAGAAACAC
 AGGAAGGAGAAAGAAGGCAGCTCTGGGCGCAGTGGCCATCAGTGGGAAAGCTGGGAGGCCAGTATGCC
 TCCACCTCAAGTGCCTCTGCCACATCTCCATCTCGCCAGCCAAAATGGCCAATGGCACAGCAGGTA
 AAAGTGGCTCTGAGAAAAACAAACAGGCCGCTGAGAAAATCTCAGCAGCAAAAATCAGCAAGAGGCC
 TGCTGGAATGTGCTGACCTACTGTCCAGTGCACACGGAACCTGTGCCAACAGCCAGCTGGTAGACAC
 TGGACACCAGCTGCTTGACTACTGCTCAGGCTATGTGGACTGCATCCCTCAAACCTCGCAACAAATTTGCC
 TTCCGAGAGGCTGTGAGCAAACTGGAACCTCAGCCTGCAGGAGCTACAGGTTTCTTACAGCAGCTGCTGGT
 TGCCCGGACAAACCCTGTCTTAATAACTTATTGTCATGTGTACAGGAAATCAGTGATGTGGTGCAGAG
 G

ACGCGTACGCGGCCGCTCGAGCAGAACTCATCTCAGAAGAGGATCTGGCAGCAAATGATATCCTGGATT
 ACAAGGATGACGACGATAAGGTTTAA

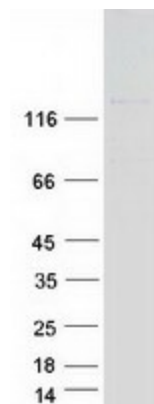
| | |
|-------------------------------|--------------------------------------------------------------------------------------------------------------------------------------------------------------------------------------------------------------------------------------------------------------------------------------------------------------------------------------------------------------------------------------------------------------------------------------------------------------------------------------------------------------------------------------------------------------------------------------------------------------------------|
| OTI Disclaimer: | The molecular sequence of this clone aligns with the gene accession number as a point of reference only. However, individual transcript sequences of the same gene can differ through naturally occurring variations (e.g. polymorphisms), each with its own valid existence. This clone is substantially in agreement with the reference, but a complete review of all prevailing variants is recommended prior to use. More info |
| OTI Annotation: | This clone was engineered to express the complete ORF with an expression tag. Expression varies depending on the nature of the gene. |
| Components: | The ORF clone is ion-exchange column purified and shipped in a 2D barcoded Matrix tube containing 10ug of transfection-ready, dried plasmid DNA (reconstitute with 100 ul of water). |
| Reconstitution Method: | <ol style="list-style-type: none">1. Centrifuge at 5,000xg for 5min.2. Carefully open the tube and add 100ul of sterile water to dissolve the DNA.3. Close the tube and incubate for 10 minutes at room temperature.4. Briefly vortex the tube and then do a quick spin (less than 5000xg) to concentrate the liquid at the bottom.5. Store the suspended plasmid at -20°C. The DNA is stable for at least one year from date of shipping when stored at -20°C. |
| Note: | Plasmids are not sterile. For experiments where strict sterility is required, filtration with 0.22um filter is required. |
| RefSeq: | NM_001100108.1 , NP_001093578.1 |
| RefSeq Size: | 11927 bp |
| RefSeq ORF: | 3503 bp |
| Locus ID: | 27 |
| Cytogenetics: | 1q25.2 |
| Protein Families: | Druggable Genome, Protein Kinase |
| Protein Pathways: | ErbB signaling pathway, Viral myocarditis |
| MW: | 126.5 kDa |
| Gene Summary: | This gene encodes a member of the Abelson family of nonreceptor tyrosine protein kinases. The protein is highly similar to the c-abl oncogene 1 protein, including the tyrosine kinase, SH2 and SH3 domains, and it plays a role in cytoskeletal rearrangements through its C-terminal F-actin- and microtubule-binding sequences. This gene is expressed in both normal and tumor cells, and is involved in translocation with the ets variant 6 gene in leukemia. Multiple alternatively spliced transcript variants encoding different protein isoforms have been found for this gene. [provided by RefSeq, Nov 2009] |

Product images:


Circular map for RC222989



Western blot validation of overexpression lysate (Cat# [LY420218]) using anti-DDK antibody (Cat# [TA50011-100]). Left: Cell lysates from untransfected HEK293T cells; Right: Cell lysates from HEK293T cells transfected with RC222989 using transfection reagent MegaTran 2.0 (Cat# [TT210002]).



Coomassie blue staining of purified ABL2 protein (Cat# [TP322989]). The protein was produced from HEK293T cells transfected with ABL2 cDNA clone (Cat# RC222989) using MegaTran 2.0 (Cat# [TT210002]).