

Product datasheet for RC222988

HDHD5 (NM_017829) Human Tagged ORF Clone

Product data:

Product Type:	Expression Plasmids
Product Name:	HDHD5 (NM_017829) Human Tagged ORF Clone
Tag:	Myc-DDK
Symbol:	HDHD5
Synonyms:	CECR5
Mammalian Cell Selection:	Neomycin
Vector:	pCMV6-Entry (PS100001)
E. coli Selection:	Kanamycin (25 ug/mL)
ORF Nucleotide Sequence:	>RC222988 representing NM_017829 Red=Cloning site Blue=ORF Green=Tags(s)

TTTTGTAATACGACTCACTATAGGGCGGCCGGAATTCGTCGACTGGATCCGGTACCGAGGAGATCTGCC
GCC**CGATCGCC**

ATGATGCTTGGTTCTTTCTCCAGCTTCTCTCAGAGCCACCCACCTTTGGGTTCTGTTGGACATCG
ATGGAGTGCTTGTGCGGGGCCACAGAGTGATCCCTGCTGCTCTGAAAGCCTTCGAAGGCTGGTGAACCTC
CCAGGGGCAGCTGCGGGTGCCCGTGGTTTTTTGTTACAAATGCTGGGAACATCTTACAACACAGCAAAGCC
CAGGAGCTGTGAGCCCTGCTGGGGTGCAGGTGGATGCAGACCAAGTTATCCTCTCTCACAGCCCCATGA
AGCTCTTCTCCGAGTACCATGAGAAGCGGATGCTGGTGTCTGGACAGGGGCCGATGGAAAATGCCCA
GGGACTGGGCTTCGAAAATGTCGTACCGTGGATGAGCTGCGGATGGCCTTTCTCTGCTTGACATGGTG
GACCTGGAGCGCGGCTAAAGACCACGCCCTCCCGAGGAATGACTTCCCCCGCATTGAAGGGGTGCTCC
TCTAGGGGAGCCGGTCCGCTGGGAGACCAGCTGCAGCTGATCATGGATGTCCTCCTCAGCAATGGGAG
CCCTGGGGCTGGCCTGGCAACACCCCCCTACCCCCACCTCCCCGCTTAGCCAGCAACATGGATCTCCTG
TGGATGGCTGAAGCAAGATGCCAGGTTTGGACATGGCACCTTTCTGCTGTGCTGGAAACCATTTACC
AGAAAGTGACGGGCAAGGAGCTGAGATACGAGGGCCTGATGGGCAAAACCAGCATCTCACTTACCAGTA
TGCCGAGGACCTGATCAGGCGACAGGCGGAGAGGGGGCTGGGCCGCCCATCCGGAAGCTCTATGCT
GTGGGTGATAACCCTATGCTGACGTATACGGCGCCAACCTGTTCCACCAGTACCTGCAGAAGGCAACGC
ATGATGGGGCGCCAGAACTAGGGGCCGGGGCACACGGCAGCAACAGCCCTCAGCAAGCCAGAGCTGCAT
CTCCATCCTGGTGTGTACAGGCTCTACAATCCCAGGAACCCACAGTCCACGGAGCCTGTCTTGAGGA
GGGGAGCCTCCATTCCACGGGCACCGAGACTTATGCTTCAGTCCAGGGCTCATGGAGGCCTCCCACGTGG
TGAATGACGTGAATGAGGCTGTGCAGCTGGTCTCCGCAAGGAGGGCTGGGCTTTGGAG

ACGCGTACGCGGCCGCTCGAGCAGAAACTCATCTCAGAAGAGGATCTGGCAGCAATGATATCCTGGATT
ACAAGGATGACGACGATAAGGTTTAA



[View online »](#)

Protein Sequence: >RC222988 representing NM_017829
Red=Cloning site Green=Tags(s)

MYAWFFLPSFSQSPPTFGFLLDIDGVLVRGHRVIPAALKAFRRLVNSQGQLRVPVVFVTNAGNILQHSKA
 QEL SALLGCEVDADQVILSHSPMKLFSEYHEKRMLVSGQGPVMENAQGLGFRNVVTDELRFMAFLLDMV
 DLERRLKTTPLRNDFPRIIEGVLILLGEPVRWETSLQLIMDVLLSNGSPGAGLATPPYPHLPVLASNMDLL
 WMAEAKMPRFHGHTFLLCLETIYQKVTGKELRYEGLMGKPSILTYQYAE DLIRRQAERRGWAAPIRKLYA
 VGDNPMSDVYGANLFHQYLQKATHDGAPELGAGGTRQQQPSASQSCISILVCTGVYNPRNPQSTEPVLGG
 GEPPFHGHRDLCFSPGLMEASHVVNDVNEAVQLVFRKEGWALE

TRTRPLEQKLISEEDLAANDILDYKDDDDKV

Chromatograms: https://cdn.origene.com/chromatograms/mk8056_g10.zip

Restriction Sites: SgfI-MluI

Cloning Scheme:



ACCN: NM_017829

ORF Size: 1179 bp

OTI Disclaimer: The molecular sequence of this clone aligns with the gene accession number as a point of reference only. However, individual transcript sequences of the same gene can differ through naturally occurring variations (e.g. polymorphisms), each with its own valid existence. This clone is substantially in agreement with the reference, but a complete review of all prevailing variants is recommended prior to use. [More info](#)

OTI Annotation: This clone was engineered to express the complete ORF with an expression tag. Expression varies depending on the nature of the gene.

Components: The ORF clone is ion-exchange column purified and shipped in a 2D barcoded Matrix tube containing 10ug of transfection-ready, dried plasmid DNA (reconstitute with 100 ul of water).

Reconstitution Method:

1. Centrifuge at 5,000xg for 5min.
2. Carefully open the tube and add 100ul of sterile water to dissolve the DNA.
3. Close the tube and incubate for 10 minutes at room temperature.
4. Briefly vortex the tube and then do a quick spin (less than 5000xg) to concentrate the liquid at the bottom.
5. Store the suspended plasmid at -20°C. The DNA is stable for at least one year from date of shipping when stored at -20°C.

RefSeq: [NM_017829.5](#), [NP_060299.4](#)

RefSeq Size: 1734 bp

RefSeq ORF: 1182 bp

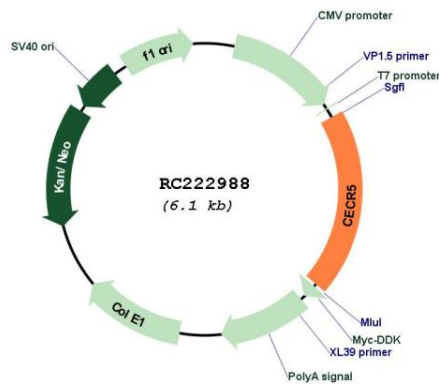
Locus ID: 27440

UniProt ID: [Q9BXW7](#)

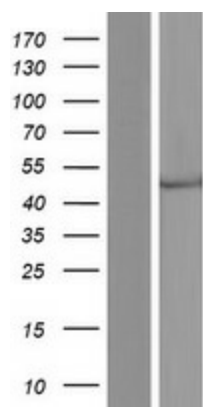
Cytogenetics: 22q11.1

MW: 43.4 kDa

Product images:



Circular map for RC222988



Western blot validation of overexpression lysate (Cat# [LY413514]) using anti-DDK antibody (Cat# [TA50011-100]). Left: Cell lysates from untransfected HEK293T cells; Right: Cell lysates from HEK293T cells transfected with RC222988 using transfection reagent MegaTran 2.0 (Cat# [TT210002]).