

Product datasheet for RC222986

DRGX (NM_001080520) Human Tagged ORF Clone

Product data:

| | |
|---------------------------|--|
| Product Type: | Expression Plasmids |
| Product Name: | DRGX (NM_001080520) Human Tagged ORF Clone |
| Tag: | Myc-DDK |
| Symbol: | DRGX |
| Synonyms: | DRG11; PRRXL1 |
| Mammalian Cell Selection: | Neomycin |
| Vector: | pCMV6-Entry (PS100001) |
| E. coli Selection: | Kanamycin (25 ug/mL) |
| ORF Nucleotide Sequence: | >RC222986 representing NM_001080520 Red=Cloning site Blue=ORF Green=Tags(s) |

TTTTGTAATACGACTCACTATAGGGCGGCCGGAATTCGTCGACTGGATCCGGTACCGAGGAGATCTGCC
GCC**CGATCGCC**

ATGGTGCTGATGAGCTGTGACCAACGGTTGATCAGTTTGCTCTTGGTAGGCACTGCAACCTTTGGCAATC
ACTCTTCGGGGATTTTGTGACGGTTTCTGCGTAGAAAACAGCGCCGGAACCGGACGACGTTCACTCT
TCAGCAGCTGGAAGCTCTCGAGGCCGTTTTTGCCAAACACACTATCCAGATGTCTTCACCAGAGAAGAG
CTCGCCATGAAAATAAACCTCACAGAAGCCAGAGTGCAGGTTTGGTTCCAGAACAGAAGGGCCAAATGGA
GGAAGACAGAGAGAGGGCCTCAGACCAGGAGCCAGGAGCCAAGGAGCCATGGCAGAGGTGACACCTCC
TCCAGTGAGAAACATCAACTCCCCGCCCTGGGGACCAAGCCCGAGTAAGAAGGAGGCCCTGGAGGCC
CAGCAGAGCCTGGGGCGAACGGTAGTCTGCAGGGCCTTTCTTCCCCTCCTGCTTGCCGGGACTCTCC
TGAACACGGCCACCTACGCCCAGGCCTTGCCATGTGGCTTCCCTCAAAGGGGGCCCACTGTGCTCTTG
CTGCGTCCCAGACCCATGGGACTCTCCTTCTTCCCACATGGCTGCCAGAGTAACCGCACGGCCAGC
GTGGCCACCCTGCGCATGAAGGCCCGGAGCACTCAGAAGCTGTCTGCAGTCAGCCAACCTCCTGCCTT
CCACCAGCAGCAGCCCCGCCCTGTGCGCAAGCCGGCGCCCCCAGATGGCAGCCAGGAAAAGACCTCTCC
CACCAAGGAACAGAGCGAGGCAGAGAAGAGTGTA

ACGCGTACGCGGCCGCTCGAGCAGAAACTCATCTCAGAAGAGGATCTGGCAGCAAATGATATCCTGGATT
ACAAGGATGACGACGATAAGGTTTAA



[View online »](#)

Protein Sequence: >RC222986 representing NM_001080520
Red=Cloning site Green=Tags(s)

MVLMSCDQRLISLLLVTATFGNHSSGDFDDGFLRRKQRRNRRTFTLQQLEALEAVFAQTHYPDVFTREE
 LAMKINL TEARVQVWFQNRRAKWRKTERGASDQEPGAKEPMAEVT PPPVVRNINSPPPGDQARSKKEALEA
 QQSLGRTVGPAGPFFPSCLP GTLLNTATYAQALSHVASLKGGLPCSCCVPDPMGLSFLPTYGCQSNRTAS
 VATLRMKAREHSEAVLQSANLLPSTSSSPGPVAKPAPPDGSQEKT SPTKEQSEAEKSV

TRTRPLEQKLISEEDLAANDILDYKDDDDKV

Chromatograms: https://cdn.origene.com/chromatograms/mk8046_d10.zip

Restriction Sites: SgfI-MluI

Cloning Scheme:



ACCN: NM_001080520

ORF Size: 804 bp

OTI Disclaimer: The molecular sequence of this clone aligns with the gene accession number as a point of reference only. However, individual transcript sequences of the same gene can differ through naturally occurring variations (e.g. polymorphisms), each with its own valid existence. This clone is substantially in agreement with the reference, but a complete review of all prevailing variants is recommended prior to use. [More info](#)

OTI Annotation: This clone was engineered to express the complete ORF with an expression tag. Expression varies depending on the nature of the gene.

Components: The ORF clone is ion-exchange column purified and shipped in a 2D barcoded Matrix tube containing 10ug of transfection-ready, dried plasmid DNA (reconstitute with 100 ul of water).

Reconstitution Method:

1. Centrifuge at 5,000xg for 5min.
2. Carefully open the tube and add 100ul of sterile water to dissolve the DNA.
3. Close the tube and incubate for 10 minutes at room temperature.
4. Briefly vortex the tube and then do a quick spin (less than 5000xg) to concentrate the liquid at the bottom.
5. Store the suspended plasmid at -20°C. The DNA is stable for at least one year from date of shipping when stored at -20°C.

RefSeq: [NM_001080520.1](#), [NP_001073989.1](#)

RefSeq Size: 807 bp

RefSeq ORF: 806 bp

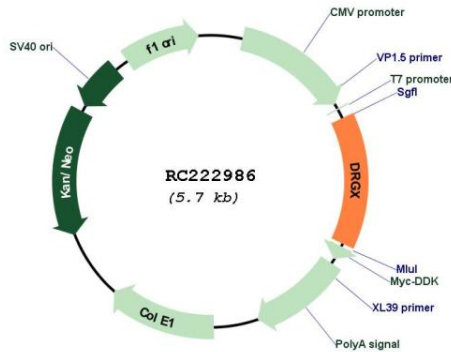
Locus ID: 644168

Cytogenetics: 10q11.23

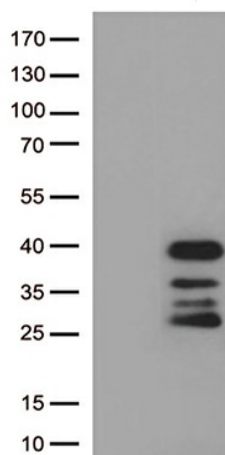
MW: 28.9 kDa

Gene Summary: Transcription factor required for the formation of correct projections from nociceptive sensory neurons to the dorsal horn of the spinal cord and normal perception of pain. [UniProtKB/Swiss-Prot Function]

Product images:



Circular map for RC222986



HEK293T cells were transfected with the pCMV6-ENTRY control (Cat# [PS100001], Left lane) or pCMV6-ENTRY DRGX (Cat# RC222986, Right lane) cDNA for 48 hrs and lysed. Equivalent amounts of cell lysates (5 ug per lane) were separated by SDS-PAGE and immunoblotted with anti-DRGX (Cat# [TA813114])(1:500).