

Product datasheet for **RC222983**

PTGER3 (NM_198719) Human Tagged ORF Clone

Product data:

Product Type:	Expression Plasmids
Product Name:	PTGER3 (NM_198719) Human Tagged ORF Clone
Tag:	Myc-DDK
Symbol:	PTGER3
Synonyms:	EP3; EP3-I; EP3-II; EP3-III; EP3-IV; EP3-VI; EP3e; Inc003875; PGE2-R
Mammalian Cell Selection:	Neomycin
Vector:	pCMV6-Entry (PS100001)
E. coli Selection:	Kanamycin (25 ug/mL)
ORF Nucleotide Sequence:	>RC222983 representing NM_198719 Red=Cloning site Blue=ORF Green=Tags(s)

TTTTGTAATACGACTCACTATAGGGCGCCGGGAATTCGTCGACTGGATCCGGTACCGAGGAGATCTGCC
GCC**GCGATCGCC**

ATGAAGGAGACCCGGGGCTACGGAGGGGATGCCCCCTTCTGCACCCGCCTCAACCACTCCTACACAGGCA
TGTGGGCGCCGAGCGTTCCGCCGAGGCGGGGCAACCTCACGCGCCCTCCAGGGTCTGGCGAGGATTG
CGGATCGGTGTCGTGGCCTTCCCGATCACCATGCTGCTCACTGGTTTCGTGGGCAACGCACTGGCCATG
CTGCTCGTGTGCGCAGCTACCGGCGCCGGGAGAGCAAGCGCAAGAAGTCTTCTGCTGTGCATCGGCT
GGCTGGCGCTCACCGACCTGGTCGGGCAGCTTCTCACCACCCGGTCGTCATCGTCGTGTACCTGTCCAA
GCAGCGTTGGGAGCACATCGACCCGTCGGGGCGGCTCTGCACCTTTTTCGGGCTGACCATGACTGTTTT
GGGCTCTCCTCGTTGTTTCATCGCCAGCGCCATGGCCGTCGAGCGGGCGCTGGCCATCAGGGCGCCGCACT
GGTATGCGAGCCACATGAAGACGCGTGCCACCCGCGCTGTGCTGCTCGGCGTGTGGCTGGCCGTGCTCGC
CTTCGCCCTGCTGCCGGTGTGGGCGTGGGCCAGTACACCGTCCAGTGGCCCGGGACGTGGTGTTCATC
AGCACCGGGCGAGGGGGCAACGGGACTAGCTCTTCGCATAACTGGGGCAACCTTTTTCTTCGCTCTGCT
TTGCCCTCCTGGGGCTCTTGGCGCTGACAGTACCTTTTCTGCAACCTGGCCACCATTAAGGCCTGGT
GTCCCGCTGCCGGGCAAGGCCACGGCATCTCAGTCCAGTGGCCAGTGGGGCCGATCACGACCGAGACG
GCCATTCAGCTTATGGGGATCATGTGCGTGTGTCGGTCTGCTGGTCTCCGCTCCTGATTAATGATGTTGA
AAATGATCTTCAATCAGACATCAGTTGAGCACTGCAAGACACACACGGAGAAGCAGAAAGAAATGCAACT
CTTCTTAATAGCTGTTCCGCTGGCTTCACTGAACCAGATCTTGATCCTTGGGTTTACCTGCTGTTAAGA
AAGATCTTCTCGAAAGTTTTGCCAGATCAGGTACCACACAACTATGCATCCAGTCCACCTCT
TACCCTGCCAGTGTCTCAACCTTGATGTGGAGCGACCAATTTGGAAAGA

AG**GCGACCG**ACGCGTACGCGGCCGCTCGAGCAGAACTCATCTCAGAAGAGGATCTGGCAGCAAATGATATCC
TGGATTACAAGGATGACGACGATAAGGTTTAA



[View online »](#)

Protein Sequence: >RC222983 representing NM_198719
Red=Cloning site Green=Tags(s)

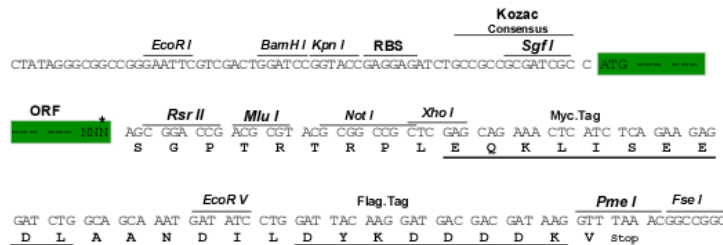
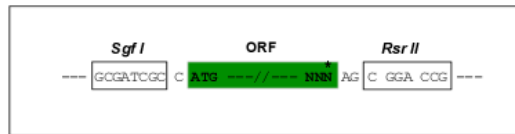
MKETRGYGGDAPFCTRLNHSYTGWAPERSAEARGNLTRPPGSGEDCGSVSVAFPIITMLLTGFVGNALAM
 LLVSRSYRRRESKRKKSFLLCIGWLALDVLVQQLLTPVVIVVYLSKQRWEHIDPSGRLCTFFGLTMTVF
 GLSSLFIASAMAVERALAIRAPHWYASHMKTRATRAVLLGVWLAVLAFALLPVLGVGQYTVQWPGTWCFI
 STGRGGNGTSSSHNWGNLFFASAFALGLLLALVTTFSCNLATIKALVSRCAKATASQSSAQWGRIITET
 AIQLMGIMCVLSVCWSPLLIMMLKMIFFNQTSVEHCKTHTEKQKECNFFLIIVRLASLNQILDWPVYLLLR
 KILLRKFQCIRYHTNNYASSSTSLPCQCSSTLMWSDHLER

SGPTRTRRLEQKLISEEDLAANDILDYKDDDDKV

Restriction Sites: SgfI-RsrII

Cloning Scheme:

Cloning sites used for ORF Shutting:



* The last codon before the Stop codon of the ORF

ACCN: NM_198719

ORF Size: 1170 bp

OTI Disclaimer: The molecular sequence of this clone aligns with the gene accession number as a point of reference only. However, individual transcript sequences of the same gene can differ through naturally occurring variations (e.g. polymorphisms), each with its own valid existence. This clone is substantially in agreement with the reference, but a complete review of all prevailing variants is recommended prior to use. [More info](#)

OTI Annotation: This clone was engineered to express the complete ORF with an expression tag. Expression varies depending on the nature of the gene.

Components: The ORF clone is ion-exchange column purified and shipped in a 2D barcoded Matrix tube containing 10ug of transfection-ready, dried plasmid DNA (reconstitute with 100 ul of water).

Reconstitution Method:

1. Centrifuge at 5,000xg for 5min.
2. Carefully open the tube and add 100ul of sterile water to dissolve the DNA.
3. Close the tube and incubate for 10 minutes at room temperature.
4. Briefly vortex the tube and then do a quick spin (less than 5000xg) to concentrate the liquid at the bottom.
5. Store the suspended plasmid at -20°C. The DNA is stable for at least one year from date of shipping when stored at -20°C.

RefSeq: [NM_198719.2](#)

RefSeq Size: 2353 bp

RefSeq ORF: 1173 bp

Locus ID: 5733

UniProt ID: [P43115](#)

Cytogenetics: 1p31.1

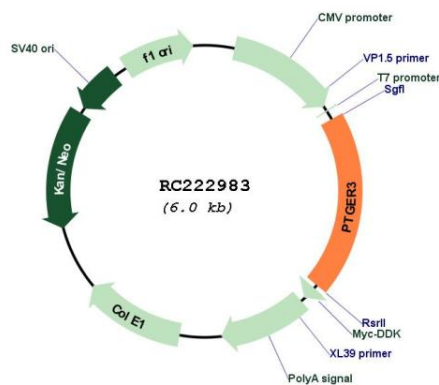
Protein Families: Druggable Genome, GPCR, Transcription Factors, Transmembrane

Protein Pathways: Calcium signaling pathway, Neuroactive ligand-receptor interaction

MW: 43.1 kDa

Gene Summary: The protein encoded by this gene is a member of the G-protein coupled receptor family. This protein is one of four receptors identified for prostaglandin E2 (PGE2). This receptor may have many biological functions, which involve digestion, nervous system, kidney reabsorption, and uterine contraction activities. Studies of the mouse counterpart suggest that this receptor may also mediate adrenocorticotrophic hormone response as well as fever generation in response to exogenous and endogenous stimuli. Multiple transcript variants encoding different isoforms have been found for this gene. [provided by RefSeq, Aug 2009]

Product images:



Circular map for RC222983