

Product datasheet for **RC222980**

TBRG4 (NM_199122) Human Tagged ORF Clone

Product data:

Product Type:	Expression Plasmids
Product Name:	TBRG4 (NM_199122) Human Tagged ORF Clone
Tag:	Myc-DDK
Symbol:	TBRG4
Synonyms:	CPR2; FASTKD4
Mammalian Cell Selection:	Neomycin
Vector:	pCMV6-Entry (PS100001)
E. coli Selection:	Kanamycin (25 ug/mL)



[View online »](#)

ORF Nucleotide Sequence:

>RC222980 representing NM_199122
 Red=Cloning site Blue=ORF Green=Tags(s)

TTTTGTAATACGACTCACTATAGGGCGGCCGGAATTCGTCGACTGGATCCGGTACCGAGGAGATCTGCC
 GCC**CGGATCGCC**

ATGGCAGCTCACCTGGTAAAGCGATGCACGTGCCTCCTGAGAGAAGCTGCTCGTCAGGCCCTGCCATGG
 CTCAGATTGGCCGACTGAGACTTGCTGGGTAGCCATAAGACTCTGACTTCTCAGCCACCTACCCAT
 TTCCACCTCCCAGTTCTTGTATGGAGCCGGTGGAGAAGGAACGAGCATCTACTCCCTACATAGAGAAG
 CAGGTGGACCACCTCATCAAGAAGGCCACAAGGCCAGAGGAGCTCCTGGAGCTACTTGGTGGCAGTCACG
 ACTTGGACAGCAATCAAGCAGCAATGGTACTTATCCGGCTCTCTCACTTGTGTCTGAGAAGCCAGAAGA
 TAAAGGCTTGTCTACAGGATGCCACTTTCATCAACTTCTCTGTCTGCTCAACAGTCAGATTGCCTCG
 GTCTGGCATGGTACCCTCTCGAAGCTGCTGGGAAGCCTGTATGCTCTGGGCATCCCCAAGGCCTCCAAGG
 AGCTGCAGTCGGTGGAGCAGGAGGTCCGCTGGCGCATGCGGAAGCTCAAGTACAAGCACCTGGCCTTCT
 GGCAGAGTCTGTGCCACCTCTCACAGGAGCAGCACTCGCAGGAGCTGCTGGCTGAGCTGCTCACACAC
 CTGAAAAGGCGTTGGACAGAAATTGAAGATTCACACATTAAGTACCGTATGATGAAGGTGGGACACC
 TCTCGGAGCCACTAATGAACCGCTGGAAGACAAGCACGCTCTGAACAGAGCGCAGGACATCACCCCTGCC
 CCACCTGTGCAGCGTACTTCTGGCTTTTGCCTGCTGAACTTCCATCCAGACCAAGAGGATCAGTTCTTC
 AGCCTGGTACATGAGAAGCTGGGGTTCAGAGCTGCCAGGCCTGGAGCCAGCCCTGCAGGTGGACCTGGTGT
 GGGCCCTGTGTGTCTGCAGCAGGCACGGGAAGCAGAGCTGCAAGCCGCTCTCCACCCTGAATTTACAT
 CCAATTTCTAGGGGGCAAGTCTCAGAAGGATCAGAACACCTTCCAGAAGCTGCTCCACATCAACGCCACT
 GCCCTGCTGGAGTACCCCGAGTACTCGGGTCCCCTTCTGCCTGCCTCGGCTGTGGCCCTGGGCCCTCAG
 CCCTTGACAGGAAGGTGACCCCCCTGCAAAGGAGCTGCAGGAGACGCTGAAGGGGCTGCTGGGGACGCG
 CGACAAGGGCAGCCTCGAGGTGGCCACGAGTATGGCTGGGTGCTGGATGCTGAGGTGCTGCTGGACAGT
 GACGGCGAGTTTCTGCCCGTAAGGGACTTTGTGGCACCTCACCTTGCCAGCCAAGTGGGAGCCAGTCAC
 CACCTCCAGGGTCTAAGAGGCTAGCGTTCTTGGGTGGGAGTTCCCAACTTCAACAGCCGAAGCAAGGA
 CTTGCTGGGTGCTTTGTTCTGGCCCGGCGACACATAGTGGTGCAGGCTTCTGATAGTGGACGTCCCA
 TTCTATGAGTGGCTGGAAGTCAAGTCTGAATGGCAGAAAGGCGCTACCTCAAGGACAAGATGCGCAAG
 CGGTGGCTGAGGAGCTGGCCAAG

ACGCGTACGCGGCCGCTCGAGCAGAAACTCATCTCAGAAGAGGATCTGGCAGCAAATGATATCCTGGATT
 ACAAGGATGACGACGATAAGGTTTAA

Protein Sequence:

>RC222980 representing NM_199122
 Red=Cloning site Green=Tags(s)

MAAHLVKRCTCLLREARQAPAMAPVGRRLRLAWVAHKTLTSSATSPIIHLPGSLMEPVEKERASTPYIEK
 QVDHLIKKATRPEELLELLGGSHLDSNQAAMVLIIRLSHLLSEKPEDKGLLIQDAHFHQLLCLLNSQIAS
 VWHGTL SKLLGSLYALGIPKASKELQSVEQEVWRMRKLYKHLAFLAESCATLSQEQHSQELLAELLTH
 LERRWTEIEDSHTLVTVMMKVGHLSPLMNRLEDKHVLRNRAQDITLPHLCSVLLAFARLNFHPDQEDQFF
 SLVHEKLGSELPGLEPALQVDLWVALCVLQQAREAELQAVLHPEFHIQFLGGKSQKQNTFQKLLHINAT
 ALLEYPEYSGPLLPASAVAPGPSALDRKVTPLQKELQETLKGLLGSADKGSLEVATQYGWVLD AEVLLDS
 DGEFLPVRDFVAPHLAQPTGSQSPPPGSKRLAFLRWEF PNFNSRSKDLLGRFVLARRHIVAAGFLIVDVP
 FYEWLELKSEWQK GAYLKDKMRKAVAEELAK

TRTRPLEQKLISEEDLAANDILDYKDDDDKV

Restriction Sites:

Sgfl-MluI

Cloning Scheme:


ACCN: NM_199122

ORF Size: 1563 bp

OTI Disclaimer: The molecular sequence of this clone aligns with the gene accession number as a point of reference only. However, individual transcript sequences of the same gene can differ through naturally occurring variations (e.g. polymorphisms), each with its own valid existence. This clone is substantially in agreement with the reference, but a complete review of all prevailing variants is recommended prior to use. [More info](#)

OTI Annotation: This clone was engineered to express the complete ORF with an expression tag. Expression varies depending on the nature of the gene.

Components: The ORF clone is ion-exchange column purified and shipped in a 2D barcoded Matrix tube containing 10ug of transfection-ready, dried plasmid DNA (reconstitute with 100 ul of water).

- Reconstitution Method:**
1. Centrifuge at 5,000xg for 5min.
 2. Carefully open the tube and add 100ul of sterile water to dissolve the DNA.
 3. Close the tube and incubate for 10 minutes at room temperature.
 4. Briefly vortex the tube and then do a quick spin (less than 5000xg) to concentrate the liquid at the bottom.
 5. Store the suspended plasmid at -20°C. The DNA is stable for at least one year from date of shipping when stored at -20°C.

RefSeq: [NM_199122.2](#), [NP_954573.1](#)

RefSeq Size: 1940 bp

RefSeq ORF: 1566 bp

Locus ID: 9238

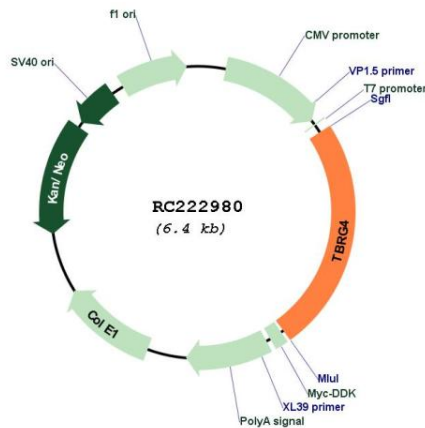
UniProt ID: [Q969Z0](#)

Cytogenetics: 7p13

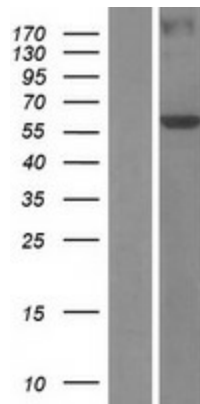
MW: 58.9 kDa

Gene Summary: Plays a role in processing of mitochondrial RNA precursors and in stabilization of a subset of mature mitochondrial RNA species, such as MT-CO1, MT-CO2, MT-CYB, MT-CO3, MT-ND3, MT-ND5 and MT-ATP8/6. May play a role in cell cycle progression (PubMed:9383053).
[UniProtKB/Swiss-Prot Function]

Product images:



Circular map for RC222980



Western blot validation of overexpression lysate (Cat# [LY404738]) using anti-DDK antibody (Cat# [TA50011-100]). Left: Cell lysates from untransfected HEK293T cells; Right: Cell lysates from HEK293T cells transfected with RC222980 using transfection reagent MegaTran 2.0 (Cat# [TT210002]).