

Product datasheet for **RC222973**

ZNF605 (NM_183238) Human Tagged ORF Clone

Product data:

Product Type:	Expression Plasmids
Product Name:	ZNF605 (NM_183238) Human Tagged ORF Clone
Tag:	Myc-DDK
Symbol:	ZNF605
Mammalian Cell Selection:	Neomycin
Vector:	pCMV6-Entry (PS100001)
E. coli Selection:	Kanamycin (25 ug/mL)



[View online »](#)

ORF Nucleotide
Sequence:

>RC222973 representing NM_183238
Red=Cloning site Blue=ORF Green=Tags(s)

TTTTGTAATACGACTCACTATAGGGCGGCCGGAATTCGTCGACTGGATCCGGTACCGAGGAGATCTGCC
GCC**CGGATCGCC**

ATGATCCAGTCACAGATATCATTGAGGATGTGGCTGTGGATTTACAGCTGGAGGAATGGCAGCTACTTA
ATCCTACTCAGAAGAAGTTGTACAGAGATGTGATGTTGGAGAAGTATAGCAATCTGGTTTTCTTGGAAAGT
CTGGCTAGATAATCCCAAATGTGGCTCCGAGATAATCAAGACAACCTTAAAAAGTATGGAGAGAGGCCAT
AAATATGATGTTTTGGAAAAATATTTAATTCAAGCATAAACATTGTTTCATGTAGGACTGCGATCCCAT
AATGTGGCACAGGAGAAAAAGTTTGAATGTCCTTTTGTATTGCTTATTCAAAAATAAATGTGAAAG
AAAGAAAATTGATGAACTCAATAAGAAATTATTGTTCTGTATCAAACCTGGCAGAACCCATGGTGGGATA
AAATACTGTGATTGCAGTACATGTAGAAAATCCAGCAACGAAGGCCATGGCTCACTGCTAATCACATAA
CACACACAGGAGTCTATTTATGCATGGAATGTGGCAGATTTTTTAAACAAGAAGTCACAACCTGTTATACA
CCAGAGAACTCATACAGGAGAGAAGCCCTATCAATGCAGTGAGTGTGAAAAGCCTTTTCACAGAAGTCA
CTGCTCACGGTTCATCAAGAAGCTCACTCAGGAGAAAAACCGCATGGGTGCAGCGAATGTGAGAAAGCTT
TTAGTAGGAAGTCACTCCTCATTTCATCAGAGAATTCATACTGGAGAGAAGCCGTATGGATGCAGTGA
ATGTGGAAAAGCCTTCAGTAGGAAGTCGCAGCTTAAAAGACATCAGATAACGCACACAATAGAGAAAACC
TACAGTTGCAGTGTGAGTGGGAAAGCATTCTCCAGAAATTTAACTCATCACACATCAGAGAGCGCACA
CAGGAGAGAAACCTATCCATGTAGTCACTGTGGAAAAGCCTTCTTTGGAAAGTCGCAGCTGATTACTCA
TCAGAGGACCCACACAGGGAAGAAACCTTACGGATGTGGTGTGATGTCAAAAAGCCTTCAGCAGGAAGTCA
CTTCTCATTAGGCATCAGAGATTTCATACAGGAGAGAAGCCCTACGAATGCAACGAATGTGGTGAAGCCT
TCATCAGAAAACACAGCTGATTAACATCAGATAACTCACACAGGAGAGAAGAACTATCGATGCAGTGA
TTGTGAGGAGGCCCTTCTTTAAGAAGTCAGAGTTAATAAGACATCAAAAAATTCACTTAGGAGAGAAACCA
TATGGATGCATTCAATGTGGAAAACCTTCTTTGGAAAGTCCCAGCTCCTAACGCATCACAGAACACACA
CTGGGGAGAAGCCTTATGAATGCAGTGTGAGTGGGAAAGCCTTCACCCAGAAGTCAAGCCTGATATCACA
TCAGAGAACACATACAGGTGAGAAACCTATGAATGCAGTGAATGCAGGAAAACCTTCAGTGAAGTCA
AGTCTCATTATCATCAGAGAACCATACTGGAGAAAAGCCTTTGAATGTAGTGAATGTAGGAAAGCTT
TTGCTGGAAGCCACAGCTTCTTAGGCATCAGAGAATTCATACAGGGAGAAAACCTATGAATGCAGTGA
ATGTGGAAAAGCATTGTTTCAGAAAGTGCAGCTCATTAAAGCATCAAAGAAATCACACAGGAGAGAAAACC
TATGGATGCAGCGATTGTGAAAAGCTTCTTTGAGAAGGCACAGCTGATTATACATCAGAGAATTCATA
CAGGAGAGAGACCATATAAATGTGGTGAATGTGGGAAATCTTTCACAAGAAAGTCACACCTTATAGGCA
TCAGAGGATTCATACAGGAGATAAATACTATGGATGCAATGAGTGTGGGACCACCTTCAACAGGAAGTCG
CAGCTTATGATACATCAGAGAAATCATATAATA

ACGCGTACGCGGCCGCTCGAGCAGAACTCATCTCAGAAGAGGATCTGGCAGCAATGATATCCTGGATT
ACAAGGATGACGACGATAAGGTTTAA

Protein Sequence: >RC222973 representing NM_183238
Red=Cloning site Green=Tags(s)

```

MIQSQISFEDVAVDFTLEEWQLLNPTQKNLYRDVMLENYSNLVFLEVWLDNPKMWRDNDLNKSMERGH
KYDVFVGKIFNSSINIVHGLRSHKCGTGEKSLKCPFDLLIPKNCCERKKIDELNKKLLFCIKPGRTHGGI
KYCDCSTCRKSSNEEPWLTANHIHTGTGVLCEMCGRFFNKKSQLVIHQRTHTGEKPYQCSECGKAFSQKS
LLTVHQRTHSGEKPHGCSECQKAFSRKSLILHQRIHTGEKPYGCSECGKAFSRKSQLKRHQITHTIEKP
YSCSECGKAFSQKLKLIHQRAHTGEKPYPCSHCGKAFFWKSQLIHQRTHTGKKPYGCGECQKAFSRNS
LLIRHQRIHTGEKPYECNECGEAFIRKQLIKHQITHTGEKNYRCSDCCEEAFKKSELIRHQIHLGEKP
YGCIQCGKTFFGKSQLLTHHRHTHTGEKPYECSECGKAFTQKSSLISHQRHTHTGEKPYECSECRKTFSEKS
SLIHHQRHTHTGEKPFECSECRKAFAWKPQLLRHQRIHTGEKPYECSECGKAFVQKVLIKHQRNHTGEKT
YGCSDCAKAFFEKAQLIIHQRIHTGERPYKCGECGKSFTRKSHLMRHRQIHTGDKYYGCNECGTTFRNKS
QLMIHQRNHII
    
```

TRTRPLEQKLISEEDLAANDILDYKDDDDKV

Chromatograms: https://cdn.origene.com/chromatograms/mg3521_g02.zip

Restriction Sites: SgfI-MluI

Cloning Scheme:



ACCN: NM_183238

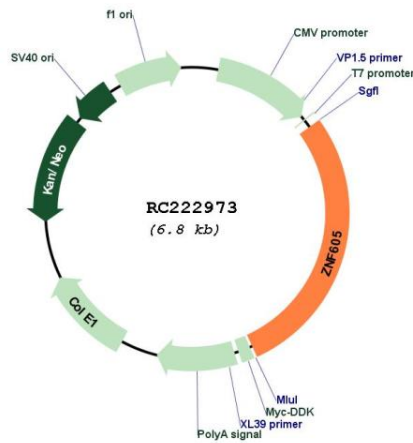
ORF Size: 1923 bp

OTI Disclaimer: The molecular sequence of this clone aligns with the gene accession number as a point of reference only. However, individual transcript sequences of the same gene can differ through naturally occurring variations (e.g. polymorphisms), each with its own valid existence. This clone is substantially in agreement with the reference, but a complete review of all prevailing variants is recommended prior to use. [More info](#)

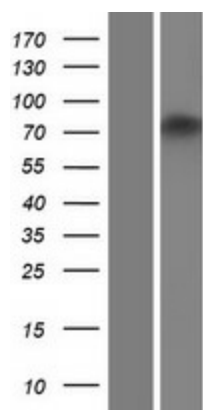
OTI Annotation: This clone was engineered to express the complete ORF with an expression tag. Expression varies depending on the nature of the gene.

- Components:** The ORF clone is ion-exchange column purified and shipped in a 2D barcoded Matrix tube containing 10ug of transfection-ready, dried plasmid DNA (reconstitute with 100 ul of water).
- Reconstitution Method:**
1. Centrifuge at 5,000xg for 5min.
 2. Carefully open the tube and add 100ul of sterile water to dissolve the DNA.
 3. Close the tube and incubate for 10 minutes at room temperature.
 4. Briefly vortex the tube and then do a quick spin (less than 5000xg) to concentrate the liquid at the bottom.
 5. Store the suspended plasmid at -20°C. The DNA is stable for at least one year from date of shipping when stored at -20°C.
- RefSeq:** [NM_183238.4](#)
- RefSeq Size:** 6239 bp
- RefSeq ORF:** 1926 bp
- Locus ID:** 100289635
- UniProt ID:** [Q86T29](#)
- Cytogenetics:** 12q24.33
- MW:** 74.2 kDa
- Gene Summary:** May be involved in transcriptional regulation.[UniProtKB/Swiss-Prot Function]

Product images:



Circular map for RC222973



Western blot validation of overexpression lysate (Cat# [LY405233]) using anti-DDK antibody (Cat# [TA50011-100]). Left: Cell lysates from untransfected HEK293T cells; Right: Cell lysates from HEK293T cells transfected with RC222973 using transfection reagent MegaTran 2.0 (Cat# [TT210002]).