

Product datasheet for **RC222969**

PLA2G4D (NM_178034) Human Tagged ORF Clone

Product data:

Product Type:	Expression Plasmids
Product Name:	PLA2G4D (NM_178034) Human Tagged ORF Clone
Tag:	Myc-DDK
Symbol:	PLA2G4D
Synonyms:	cPLA2delta
Mammalian Cell Selection:	Neomycin
Vector:	pCMV6-Entry (PS100001)
E. coli Selection:	Kanamycin (25 ug/mL)



[View online »](#)

ORF Nucleotide Sequence:

>RC222969 representing NM_178034
 Red=Cloning site Blue=ORF Green=Tags(s)

TTTTGTAATACGACTCACTATAGGGCGGCCGGAATTCGTCGACTGGATCCGGTACCGAGGAGATCTGCC
 GCC**CGGATCGCC**

ATGGAGAGCCTGTCACCTGGGGACCACCTGGCCACCCTTACCAGGGGGAGGCCTCTACCTGCTGGCAGC
 TCACAGTGAGGGTCTGGAGGCGCGAACTGCGCTGGGCTGACCTGTTGAGTGAGGCCGACCCTTACGT
 GATCCTACAGCTGTCGACCGCACCTGGAATGAAGTTTAAGACCAAGACGCTCACCGACACCAAGTATCCT
 GTGTGGAATGAGGCCTTCCGTTTCCTTATCCAAGTCAGGTCAAGAATGTTCTGGAGCTTAGCATCTATG
 ATGAGGACTCAGTCACGGAGGATGACATCTGCTCAAGGTTCTCTATGACATCTCAGAAGTCTCCCTGG
 CAAGCTGCTCCGAAAACCTTCTCCAGAGTCCCAGGGAGAGGAGGAGCTGGATGTGGAGTTCTGATG
 GAAGAAACGTGAGATCGCCAGAAAACCTCATACCAACAAAGTCATTGTGGCCGAGAGCTGTCATGCC
 TGGATGTGCATCTGGACAGCACAGGAGCACCGCTGTGGTTGCAGATCAGGACAAGCTGGAGCTGGAGCT
 GGTGCTGAAGGGTCTATGAGGACACACAGACATCCTTCTGGGCACAGCCTCTGCCTTCCGCTTCCAC
 TACATGGCAGCCCTAGAGACAGAGCTGAGCGGGCGCTGAGGAGCTCCAGAAGCAATGGCTGGAATGGGG
 ACAACTCAGCTGGGTACCTCACTGTGCCCTGAGGCCCTTGACCATTGGGAAGGAGGTGACTATGGATGT
 TCCTGCTCCAATGCCCCAGGAGTGAGGCTGCAGCTCAAGGCAGAGGGCTGCCCTGAGGAGCTGGCCGTG
 CACCTGGGCTTCAATCTCTGTGCAGAGGAGCAGGCCTTCTGAGCAGGAGGAAGCAGGTGGTGGCCAAGG
 CCCTGAAGCAGGCCCTGCAGCTGGACAGAGACCTGCAGGAGGATGAGGTACCCGTTGTGGGCATCATGGC
 CACAGGAGGAGGTGCCCGGGCCATGACCTCACTCTACGGCCACCTATTGGCCTTGAGAAGCTGGGCCTC
 CTAGACTGTGTGACCTACTTCAGTGGCATCTCTGGCTCTACGTGGACAATGGCCACCTGTACGGGGACC
 CTGAGTGGTCGCAGAGGGACCTGGAGGGACCTATCAGATACGCCCGGGAGCACCTGGCCAAGCAAGCT
 GGAGGTCTTTTCCCAGAGCGCCTGGCGAGCTACCGCCGGGAGCTGGAGCTGCGGGCTGAGCAGGGCCAC
 CCCACGACCTTTGTGGACCTGTGGGCGCTAGTGTGGAGTCCATGCTGCACGGCCAGGTGATGGATCAGA
 AGCTGTGACGACAGAGAGCCGCCCTGGAACGGGTGAGAACCCTCTGCCCTCTACTTGAGCCTCAATGT
 CAAAGAGAACAATCTGGAGACTGGACTTCAAGGAGTGGGTTGAGTTCTCCCCATGAGGTGGTTTTT
 CTGAAGTACGGGGCTTCGTCCCTCCTGAGCTCTCGGCTCCGAGTTCTCATGGACGGCTGATGAGGA
 GGATCCCGGAGCCCGGATCTGCTTTCTGGAAGCCATCTGGAGCAACATTTCTCCCTGAACCTGCTGGA
 TGCTGGTATGACCTCACAGTTCTGGGAGTCTGGAACAGCACATCAAGGACAAGACCAGGAGCTTA
 GAGAAGGAGCCCTGACCACCTCGGGACCTCCTCGCGGCTGGAGCCTCGTGGCTGCAGCCAGGCACGG
 CGCTGGCCAGGCATTTAAAGGCTTCTGACAGGCAGGCCCTCCACCAGCGCAGCCCCAACTTCTCCCA
 GGGCTCCAGCTGCACCAGGACTACTGTAGCCACAAAGACTTCTCCACCTGGGCAGACTACCAGTTGAC
 TCCATGCCAGCCAGCTGACCCCAAGGAGCCCGGCTCTGCCTGGTGGACGCCGCTACTTTCATCAACA
 CCAGCTCTCCCTCCATGTTCCGGCCAGGCCGAGGCTGGACCTCATCCTCTCCTTCGACTACTCCCTATC
 TGCGCCCTTCGAGGCACTGCAGCAGACGGAGCTGTACTGCCGGGCCCGGGGGTGCCTTCCCCGGGTG
 GAACCCAGCCCTCAGGACCAGCACCAGCCAAGGAATGCCACCTTTCTCAGACCCCGCTGCCCGAGG
 CCCCAGCTGCTGCACCTTCCGCTGGTCAATGCCTCCTTCAAGGACCACTCAGCCCCGGTGTCCAGGC
 CAGCCCCGAGAGCTCCAGGGTGGCCAAGTGGATCTCACGGGGCCACCTGCCCTACACCCTGTCCAAC
 ATGACCTACAAGGAGGAAGACTTCGAGCGCCTGCTGCGGCTCAGTGACTACAACGTGCAGACAGCCAGG
 GTGCCATCTGCAGGCCCTGAGGACCGCTGAAGCACCGGACTCTAGAGGCGAGGCCTCCAAGGGCACA
 GACC

ACGCGTACGCGGCCGCTCGAGCAGAACTCATCTCAGAAGAGGATCTGGCAGCAATGATATCTGGATT
 ACAAGGATGACGACGATAAGGTTTAA

Protein Sequence: >RC222969 representing NM_178034
Red=Cloning site Green=Tags(s)

MESLSPGGPPGHPYQGEASTCWQLTVRVLEARNLRWADLLSEADPYVILQLSTAPGMKFKTKLTDTSHPVWNEAFRFLIQSQVKNVLELSIYDEDSVTEDDICFKVLYDISEVLP GKLLRKTFSQSPQGEELDVEFLMEETS DRPENLITNKVIVARELSCLDVHLDSTGSTAVVADQDKLELELVLKGSYEDTQTSFLGTASAFRFHYMAALETELSGRLRSSRSGWNGDNSAGYLTVPLRPLTIGKEVTMDVPAPNAPGVRLQLKAEGCPEELAVHLGFNLCAEEQAFLSRRKQVAKALKQALQLDRDLQEDEVVVGIMATGGGARAMTSLYGHLLALQKGLLDCVTFYSGISGSTWTMAHLYGDPEWSQRDLEGP IRYAREHLAKSKLEVFSPERLASRRELELRAEQGHPTTFVDLWALVLESMLHGQVMDQKLSGQRAALERGQNPLPLYLSLNVKENNLETLDKFKEWVEFSPYEVGFLKYGAFVPPPELFGSEFFMGRLMRRIPPEPRICFLEAIWSNIFSLNLLDAWYDLTSSGESWKQHIKDKTRSL EKEPLTSSGTSSRLEASWLQPGTALAQAQAFKGF LTGRPLHQRSNPLQGLQLHQDYCSHKDFSTWADYQLDSMPSQLTPKEPRLCLVDAAYFINTSSPSMFRPGRRDLILSFDYSLSAPFEALQQTELYCRARGLPFPRV EPSPQDQHQPCHLFSDPACPEAPILLHFPLVNASFKDH SAPGVQRSPAELQGGQVDLTGATCPYTL SNMTYKEEDFERLLRLSDYNVQTSQGAILQALRTALKHRTLEARPPRAQT

TRTRPLEQKLI SEEDLAANDILDYKDDDDKV

Chromatograms: https://cdn.origene.com/chromatograms/mk8046_d12.zip

Restriction Sites: Sgfl-Mlul

Cloning Scheme:


ACCN: NM_178034

ORF Size: 2454 bp

OTI Disclaimer: The molecular sequence of this clone aligns with the gene accession number as a point of reference only. However, individual transcript sequences of the same gene can differ through naturally occurring variations (e.g. polymorphisms), each with its own valid existence. This clone is substantially in agreement with the reference, but a complete review of all prevailing variants is recommended prior to use. [More info](#)

OTI Annotation: This clone was engineered to express the complete ORF with an expression tag. Expression varies depending on the nature of the gene.

Components: The ORF clone is ion-exchange column purified and shipped in a 2D barcoded Matrix tube containing 10ug of transfection-ready, dried plasmid DNA (reconstitute with 100 ul of water).

Reconstitution Method:

1. Centrifuge at 5,000xg for 5min.
2. Carefully open the tube and add 100ul of sterile water to dissolve the DNA.
3. Close the tube and incubate for 10 minutes at room temperature.
4. Briefly vortex the tube and then do a quick spin (less than 5000xg) to concentrate the liquid at the bottom.
5. Store the suspended plasmid at -20°C. The DNA is stable for at least one year from date of shipping when stored at -20°C.

RefSeq: [NM_178034.4](#)

RefSeq Size: 3584 bp

RefSeq ORF: 2457 bp

Locus ID: 283748

UniProt ID: [Q86XP0](#)

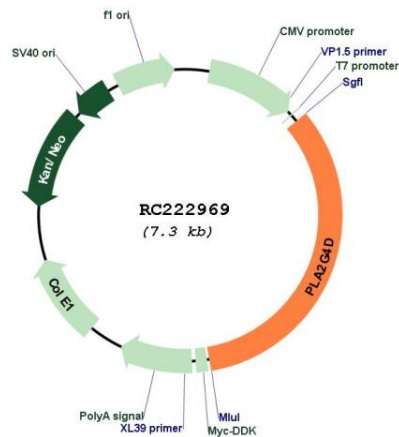
Cytogenetics: 15q15.1

Protein Pathways: Fc gamma R-mediated phagocytosis

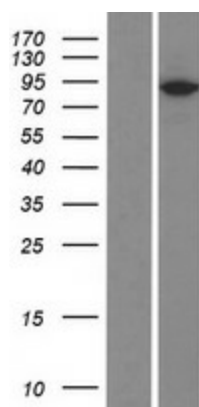
MW: 91.8 kDa

Gene Summary: The phospholipase A2 enzyme family, including PLA2G4D, catalyze the hydrolysis of glycerophospholipids at the sn-2 position and then liberate free fatty acids and lysophospholipids (Chiba et al., 2004 [PubMed 14709560]).[supplied by OMIM, Jun 2009]

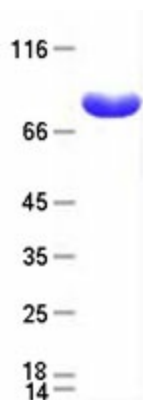
Product images:



Circular map for RC222969



Western blot validation of overexpression lysate (Cat# [LY406025]) using anti-DDK antibody (Cat# [TA50011-100]). Left: Cell lysates from untransfected HEK293T cells; Right: Cell lysates from HEK293T cells transfected with RC222969 using transfection reagent MegaTran 2.0 (Cat# [TT210002]).



Coomassie blue staining of purified PLA2G4D protein (Cat# [TP322969]). The protein was produced from HEK293T cells transfected with PLA2G4D cDNA clone (Cat# RC222969) using MegaTran 2.0 (Cat# [TT210002]).