

Product datasheet for **RC222966**

USP33 (NM_015017) Human Tagged ORF Clone

Product data:

Product Type:	Expression Plasmids
Product Name:	USP33 (NM_015017) Human Tagged ORF Clone
Tag:	Myc-DDK
Symbol:	USP33
Synonyms:	VDU1
Mammalian Cell Selection:	Neomycin
Vector:	pCMV6-Entry (PS100001)
E. coli Selection:	Kanamycin (25 ug/mL)



[View online »](#)

**ORF Nucleotide
Sequence:**

>RC222966 representing NM_015017
 Red=Cloning site Blue=ORF Green=Tags(s)

TTTTGTAATACGACTCACTATAGGGCGGCCGGAATTCGTCGACTGGATCCGGTACCGAGGAGATCTGCC
 GCC**CGCATCGCC**

ATGACAGGATCAAATTCACACATAACGATATTAACCTTAAAGGTGTTACCTCATTGAAAGTCTTGGGA
 AACAGGAAAAATTCCTAACAAAATGTCAGCTTTTCGAAATCATTGTCCACATTTGGATTAGTTGGTGA
 AATAACAAAAGAAGATTTGATACAAAAATCCCTTGGTACTTGTACAGGATTGTAAAGTCCAAGGACCAAT
 CTTTGGGCATGTCTGGAGAATAGATGTTTCATATGTTGGCTGTGGTGAATCACAAGTAGATCACAGCACCA
 TACATTCTCAGGAGACAAAGCATTATCTAACTGTGAACCTTACCCTTTCGAGTATGGTGTATGCTTG
 CAGCAAAGAAGTATTTTTGGATAGGAAATTAGGAACTCAGCCTTCATTGCCTCATGTAAGACAACCTCAC
 CAAATACAAGAAAACAGTGTCCAGGATTTAAAAATACCCAGTAATACAACATTA AAAACTCCTCTGGTTG
 CCGTATTTGATGATCTGGATATAGAAGCGGATGAAGAAGTGAACCTTAGGCCAGAGGTCTTACAGGTTT
 GAAAAATATTGGAATACTTGTACATGAATGCAGCTTTGCAGGCTCTTTCTAATTGCCACCTTTGACA
 CAGTTTTTTCTTGATTGTGGAGGACTAGCTCGAACAGATAAGAAAACCTGCCATTTGTAAAAGTTATCTCA
 AACTAATGACAGAGCTGTGGCATAAAAAGCAGGCCAGGATCTGTTGTGCCTACTACTCTGTTTCAAGGAAT
 TAAAACGTAAATCCAACATTTCCGGGGTATTCTCAGCAGGATGCTCAAGAATTCCTTCGATGTTTAAATG
 GATTTGCTTCAATGAAGAATTGAAAGAGCAAGTCATGGAAGTAGAAGAAGATCCGCAAACCATAACTACTG
 AGGAGACAATGGAAGAAGACAAGAGCCAGTCGGATGTAGATTTTCAGTCTTGTGAATCTTGTAGCAACAG
 TGATAGAGCAGAAAAATGAAAATGGCTCTAGATGCTTTTCTGAAGATAATAATGAAACAACATGTTAATT
 CAGGATGATGAAAACAATTCAGAAATGTCAAAGGATTGGCAAAAAGAGAAGATGTGCAATAAGATTAATA
 AAGTAAATCTGAAGGCGAATTTGATAAAGATAGAGACTCTATATCTGAAACAGTCGACTTAAACAACCA
 GGAAACTGTCAAAGTCAAATACACAGCAGAGCTTCAGAATATATCACTGATGTCCATTCGAATGACCTG
 TCTACACCACAGATCCTTCCATCAAATGAAGGTGTTAATCCACGTTTATCGGCAAGCCCTCCTAAATCAG
 GCAATTTGTGGCCAGGATTGGCACCACCACAAAAAAGCTCAGTCTGCATCTCCAAAGAGAAAAAACA
 GCACAAGAAATACAGAAGTGTTATTTTCAGACATATTTGATGGAACAATCATTAGTTTCAGTGCAGTGTCTG
 ACTTGTGACAGGGTGTCTGTAACCCTCGAGACCTTTCAAGATCTGTCCTTGCCAATTCCTGGCAAGGAAG
 ACCTTGCTAAGCTGCATTATCAAGTCATCAACTTCTATAGTCAAAGCAGGATCATGTGGCAAGCATA
 TGCTCCACAAGGGTGGATAGCTTTTTTCATGGAATATGTGAAGAGGTTTGTGTCTCATGTGCCCTAGC
 TGGTTTTGGGGTCCAGTAGTAACCTTGAAGATTGCTTGTGCTGCCTTCTTGGCAGAGATGAACTAAAAG
 GTGACAATATGTACAGTTGTGAAAAATGCAAAAAGTTGAGAAATGGAGTGAAGTTTTGTAAAGTACAAAA
 CTTTCTGAGATTTTGTGCATCCACCTTAAAAGATTTCAGACATGAACTAATGTTTTCCACCAAAATCAGT
 ACCCATGTTTCATTTCCGCTAGAAGGCTTGGATCTTCAGCCATTTCTTGCTAAGGATAGTCCAGCTCAAA
 TTGTGACATATGATCTTCTGTGATGATTTGCCATCATGGAACGCAAGTAGTGGACACTATATAGCCTA
 CTGCCGAAACAATCTAAATAATCTCTGGTATGAATTTGATGATCAGAGTGTCACTGAAAGTTTCAGAACT
 ACTGTACAAAATGCAGAAGCTTACGTTCTTTTCTATAGGAAGAGCAGCGAAGAGGCACAAAAAGAGAGGA
 GAAGGATATCAAATTTATTGAACATAATGGAACCAAGCCCTCCTCAGTTTTATTTCTCGACAGTGGCT
 TAATAAAATTAAGACCTTTGCCGAACCTGGCCCTATTTCAAATAATGACTTCTTTGTATTTCATGGAGGT
 GTTCTCCAAGAAAAGCTGGTTATATTGAAGACCTGGTTTTGATGCTGCCTCAGAACATTTGGGATAACC
 TATATAGCAGGTATGGTGGAGGACCAGCTGTCAACCATCTGTACATTTGTACTACTTGGCAAATGAGGC
 GGAGAAAATTGAAAAAGAAGAAAAACTGAATGGAAAATTTTATTTCGGCTTAACAGAGCGTTCCAAAAA
 GAGGACTCTCCAGCTACTTTTTATTGCATCAGTATGCAGTGGTTAGAGAATGGGAAAGTTTTGTGAAGG
 GTAAAGATGGAGATCCTCCAGGTCCTATTGACAATACTAAGATTGCAGTCACTAAATGTGGTAAATGTGAT
 GCTTAGGCAAGGAGCAGATTCTGGCCAGATTTCTGAAGAAACATGGAATTTCTGCAGTCTATTTATGGT
 GGAGGGCCTGAAGTTATCTGCGACCTCCGGTTGTTTCATGTTGATCCAGATATACTTCAAGCAGAAGAAA
 AAATTGAAGTAGAACTCGGTCTTTG

ACGCGTACGCGGCCGCTCGAGCAGAACTCATCTCAGAAGAGGATCTGGCAGCAAATGATATCCTGGATT
 ACAAGGATGACGACGATAAGGTTTAA

Protein Sequence: >RC222966 representing NM_015017
 Red=Cloning site Green=Tags(s)

```

MTGSNSHITILTLKVLPHFESLGKQEKIPNKMSAFRNHCPHLDVSGEITKEDLIQKSLGTCQDCKVQGP
LWACLNRCSYVGCESQVDHSTIHSQETKHYLTVNLTTLRVWCYACSKVEFLDRKLGTPSLPHVRQPH
QIQENSVDQFKIPSNTTLKTPLVAVFDDLDIEADEEDELRRGLTGLKNIGNTCYMNAALQALSNCPLT
QFFLDCCGLARTDKKPAICKSYLKLMTLWHSRPGSVVPTTLFQGIKTVNPTFRGYSQQDAQEFLRCLM
DLLHEELKEQVMEVEEDPQITITTEETMEEDKSQSDVDFQSCESCNSDRAENENGSRCFSEDNNETMLI
QDDENSEMSKDWQKEKMCNKINKVNSEGEFDDKDRDSISETVDLNNQETVKVQIHSRASEYITDVHSDN
STPQILPSNEGVNPRLSASPPKSGNLWPLGAPPHKKAQASAPKRKKQHKKYRSVISDIFDGTIISVQCL
TCDRVSVTLETFQDLSLPIPGKEDLAKLHSSSHPTSIVKAGSCGEAYAPQGWIAFFMEYVKRFVSVCP
WFWGPPVTLQDCLAFFARDELKGDNMYSCEKCKLRNGVKFCKVQNFPEILCIHLKRFHLMFSTKIS
THVSFPLEGLDLQPFLAKDSPAQIVTYDLLSVICHHTASSGHYIAYCRNNLNLWYEFDDQSVTEVSES
TVQNAEAYVLFYRKSSEEAQKERRRISNLLNIMEPSLLQFYISRQWLNKFKTFAEPGPISNDFLCIHGG
VPPRKAGYIEDLVMLPQNIWDNLYSRYGGPAVNHLIYICHTCQIEAEKIEKRRKTELEIFIRLNRAFQK
EDSPATFYCISMQWFREWESFVKGKDGPPGPIDNTKIAVTKCGNVMLRQGADSGQISEETWNFLQSIYG
GGPEVILRPPVVHVDPDILQAEKIEVETRSL
  
```

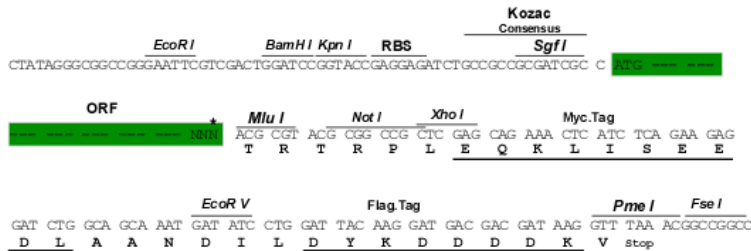
TRTRPLEQKLISEEDLAANDILDYKDDDDKV

Chromatograms: https://cdn.origene.com/chromatograms/mk6495_d11.zip

Restriction Sites: SgfI-MluI

Cloning Scheme:

Cloning sites used for ORF Shuttling:



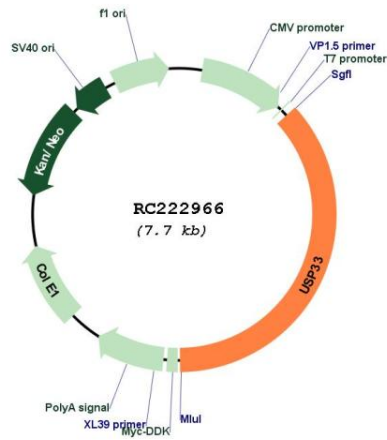
* The last codon before the Stop codon of the ORF

ACCN: NM_015017

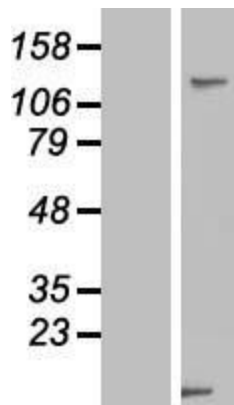
ORF Size: 2826 bp

OTI Disclaimer:	The molecular sequence of this clone aligns with the gene accession number as a point of reference only. However, individual transcript sequences of the same gene can differ through naturally occurring variations (e.g. polymorphisms), each with its own valid existence. This clone is substantially in agreement with the reference, but a complete review of all prevailing variants is recommended prior to use. More info
OTI Annotation:	This clone was engineered to express the complete ORF with an expression tag. Expression varies depending on the nature of the gene.
Components:	The ORF clone is ion-exchange column purified and shipped in a 2D barcoded Matrix tube containing 10ug of transfection-ready, dried plasmid DNA (reconstitute with 100 ul of water).
Reconstitution Method:	<ol style="list-style-type: none"> 1. Centrifuge at 5,000xg for 5min. 2. Carefully open the tube and add 100ul of sterile water to dissolve the DNA. 3. Close the tube and incubate for 10 minutes at room temperature. 4. Briefly vortex the tube and then do a quick spin (less than 5000xg) to concentrate the liquid at the bottom. 5. Store the suspended plasmid at -20°C. The DNA is stable for at least one year from date of shipping when stored at -20°C.
RefSeq:	NM_015017.5
RefSeq Size:	4524 bp
RefSeq ORF:	2829 bp
Locus ID:	23032
UniProt ID:	Q8TEY7
Cytogenetics:	1p31.1
Domains:	UCH, zf-UBP, DUSP
Protein Families:	Druggable Genome, Protease
MW:	106.5 kDa
Gene Summary:	This gene encodes a deubiquinating enzyme important in a variety of processes, including Slit-dependent cell migration and beta-2 adrenergic receptor signaling. The protein is negatively regulated through ubiquitination by von Hippel-Lindau tumor protein (VHL). Alternative splicing results in multiple transcript variants and protein isoforms. [provided by RefSeq, Jun 2012]

Product images:



Circular map for RC222966



Western blot validation of overexpression lysate (Cat# [LY414854]) using anti-DDK antibody (Cat# [TA50011-100]). Left: Cell lysates from untransfected HEK293T cells; Right: Cell lysates from HEK293T cells transfected with RC222966 using transfection reagent MegaTran 2.0 (Cat# [TT210002]).