

## Product datasheet for **RC222962**

### **Nectin 3 (NECTIN3) (NM\_015480) Human Tagged ORF Clone**

#### **Product data:**

Product Type:	Expression Plasmids
Product Name:	Nectin 3 (NECTIN3) (NM_015480) Human Tagged ORF Clone
Tag:	Myc-DDK
Symbol:	Nectin 3
Synonyms:	CD113; CDW113; NECTIN-3; PPR3; PRR3; PVRL3; PVRR3
Mammalian Cell Selection:	Neomycin
Vector:	pCMV6-Entry (PS100001)
E. coli Selection:	Kanamycin (25 ug/mL)



[View online »](#)

**ORF Nucleotide Sequence:**

>RC222962 representing NM\_015480  
 Red=Cloning site Blue=ORF Green=Tags(s)

TTTTGTAATACGACTCACTATAGGGCGGCCGGAATTCGTCGACTGGATCCGGTACCGAGGAGATCTGCC  
 GCC**CGCATCGCC**

ATGGCGCGGACCTGCGGCCGTCGCCGCTGCTGCTGAGGCGGCAAAGCACAACTTTCCTCCGCTTCTC  
 TCCTCGGAGCCGGGCTCCTGCTGCAGCCCCGACGCCACCTCCGCTGCTGCTGCTCTTCCCGCTGCT  
 GCTCTTCTCCAGGCTCTGTGGTGCCTTAGCTGGACCAATTATTGTGGAGCCACATGTCACAGCAGTATGG  
 GGAAAGAATGTTTCATTAAGTGTAAATTGAAGTAAATGAAACCATAACACAGATTTTCATGGGAGAAGA  
 TACATGGCAAAGTTCACAGACTGTTGCAGTTCACCATCCCAATATGGATTCTCTGTTCAAGGAGAATA  
 TCAGGGAAGAGTCTTGTAAAAAATTACTACTTAATGATGCAACAATTACTCTGCATAACATAGGATTC  
 TCTGATTCTGGAAAATACATCTGCAAAGCTGTTACATCCCGCTTGAAAATGCCAGTCTCTACAAGT  
 TAACTGTGTTAGTTGAACCCACTGTGAGCTGATAAAAGGGCCAGATTCTTTAATTGATGGAGGAAATGA  
 AACAGTAGCAGCCATTTGCATCGCAGCCACTGGAAAACCGTTGCACATATTGACTGGGAAGGTGATCTT  
 GGTGAAAATGGAATCCACTACAACCTCTTTTCCAATGAAACGGCAACGATTATCAGCCAGTACAAGCTAT  
 TTCCAACCAGATTTGCTAGAGGAAGGCGAATTACTTGTGTTGAAAACATCCAGCCTTGAAAAGGACAT  
 CCGATACTCTTTCATATTAGACATACAGTATGCTCCTGAAGTTTCGGTAACAGGATATGATGAAAATTGG  
 TTTGTAGGAAGAAAAGGTGTTAATCTCAAATGTAATGCTGATGCAAAATCCACCACCTTCAAATCTGTGT  
 GGAGCAGGTTGGATGGACAATGGCTGATGGTTTATTGGCTTCAGACAATACTCTTCATTTTGTCCATCC  
 ATTGACTTTCAATTATTTCTGGTGTATATCTGTAAGTGACCAATCCCTTGGTCAAAGAAGTGACCAA  
 AAAGTCATCTACATTTAGATCCTCTACTACTACCACCTTCAGCCTACAATTCAGTGGCATCCCTCAA  
 CTGCTGACATCGAGGATCTAGCAACAGAACCTAAAAAATTGCCCTTCCCATTGTCAACTTGGCAACAAT  
 TAAGGATGACACAATTGCCACGATCATTGCTAGTGTAGTGGGTGGGCTCTCTTCATAGTACTTGTAAAGT  
 GTTTTGGCTGGAATATTCTGCTATAGGAGAAGACGGACGTTTCGTGGAGACTACTTGGCAAAGACTACA  
 TTCCACCATCAGATATGCAAAAAGAATCACAATAGATGTTCTTCAACAAGATGAGCTTGATTCTTACCC  
 AGACAGTGTAAAAAAGAAAACAAAAATCCAGTGAACAATCTAATACGTAAGACTATTTAGAAGAGCCT  
 GAAAAAAGTCAAGTGAACAATGTAGAAAATCTCAATAGGTTTAAAAGACCAATGGATTATTATGAAGATC  
 TAAAAATGGGAATGAAGTTTGTGAGTGAACATTATGATGAAAACGAAGATGACTTAGTTTCACATGT  
 AGATGGTCCGTAATTTCCAGGAGGGAGTGGTATGTT

**ACGCGT**ACGCGGCCGCTCGAGCAGAAACTCATCTCAGAAGAGGATCTGGCAGCAAATGATATCCTGGATT  
 ACAAGGATGACGACGATAAGGTTTAA

**Protein Sequence:**

>RC222962 representing NM\_015480  
 Red=Cloning site Green=Tags(s)

MARTLRPSPLCPGGKQQLSSASLLGAGLLLQPPTPPPLLLLLFPLLLFSRLCGALAGPIIEPHVTAVW  
 GKNVSLKCLIEVNETITQISWEKIHGSSQTVAVHHPQYGFVQGEYQGRVLFKNYSLNDATITLHNIGF  
 SDSGKYICKAVTFPLGNAQSSTTVTLVEPTVSLIKGPDLSIDGGNETVAAICIAATGKPVAHIDWEGDL  
 GEMESTTTSFPNETATIIISQYKLPTRFARGRRITCVVKHPALEKDIRYSFILDIQYAPEVSVTYDGNW  
 FVGRKGVNLKCNADANPPPFKSVWSRLDGQWPDGLLASDNTLHFVHPLTFNYSVGYICKVTNSLGQRSDQ  
 KVIYISDPPTTTTLQPTIQWHPSTADIEDLATEPKKLPFPLSTLATIKDDTIATIIASVVGALFIVLVS  
 VLAGIFCYRRRTFRGDYFAKNYIPPSDMQKESQIDVLQQDELDSYPDSVKKENKPNVNNLIRKDYLEEP  
 EKTQWNNVENLNRFERPMDYYEDLKMGMKFVSEHYDENEDDLVSHVDGSVISRREWYV

**TR**TRPLEQKLISEEDLAANDILDYKDDDDKV

**Chromatograms:**

[https://cdn.origene.com/chromatograms/mk6167\\_e05.zip](https://cdn.origene.com/chromatograms/mk6167_e05.zip)

**Restriction Sites:**

Sgfl-Mlul

Cloning Scheme:



ACCN: NM\_015480

ORF Size: 1647 bp

OTI Disclaimer: The molecular sequence of this clone aligns with the gene accession number as a point of reference only. However, individual transcript sequences of the same gene can differ through naturally occurring variations (e.g. polymorphisms), each with its own valid existence. This clone is substantially in agreement with the reference, but a complete review of all prevailing variants is recommended prior to use. [More info](#)

OTI Annotation: This clone was engineered to express the complete ORF with an expression tag. Expression varies depending on the nature of the gene.

Components: The ORF clone is ion-exchange column purified and shipped in a 2D barcoded Matrix tube containing 10ug of transfection-ready, dried plasmid DNA (reconstitute with 100 ul of water).

- Reconstitution Method:
1. Centrifuge at 5,000xg for 5min.
  2. Carefully open the tube and add 100ul of sterile water to dissolve the DNA.
  3. Close the tube and incubate for 10 minutes at room temperature.
  4. Briefly vortex the tube and then do a quick spin (less than 5000xg) to concentrate the liquid at the bottom.
  5. Store the suspended plasmid at -20°C. The DNA is stable for at least one year from date of shipping when stored at -20°C.

RefSeq: [NM\\_015480.3](#)

RefSeq Size: 1650 bp

RefSeq ORF: 1650 bp

Locus ID: 25945

UniProt ID: [Q9NQS3](#)

**Cytogenetics:** 3q13.13

**Domains:** ig, IG

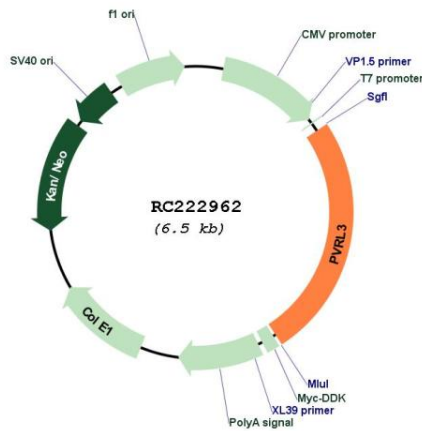
**Protein Families:** Druggable Genome, Transmembrane

**Protein Pathways:** Adherens junction, Cell adhesion molecules (CAMs)

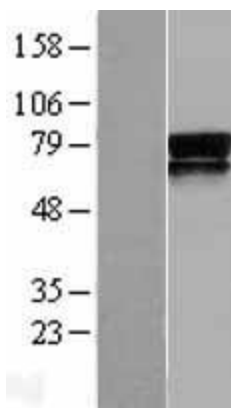
**MW:** 60.8 kDa

**Gene Summary:** This gene encodes a member of the nectin family of proteins, which function as adhesion molecules at adherens junctions. This family member interacts with other nectin-like proteins and with afadin, a filamentous actin-binding protein involved in the regulation of directional motility, cell proliferation and survival. This gene plays a role in ocular development involving the ciliary body. Mutations in this gene are believed to result in congenital ocular defects. Alternative splicing results in multiple transcript variants. [provided by RefSeq, Aug 2011]

**Product images:**



Circular map for RC222962



Western blot validation of overexpression lysate (Cat# [LY402442]) using anti-DDK antibody (Cat# [TA50011-100]). Left: Cell lysates from untransfected HEK293T cells; Right: Cell lysates from HEK293T cells transfected with RC222962 using transfection reagent MegaTran 2.0 (Cat# [TT210002]).