

Product datasheet for **RC222946**

SUSD4 (NM_017982) Human Tagged ORF Clone

Product data:

Product Type:	Expression Plasmids
Product Name:	SUSD4 (NM_017982) Human Tagged ORF Clone
Tag:	Myc-DDK
Symbol:	SUSD4
Synonyms:	PRO222
Mammalian Cell Selection:	Neomycin
Vector:	pCMV6-Entry (PS100001)
E. coli Selection:	Kanamycin (25 ug/mL)



[View online »](#)

ORF Nucleotide Sequence:

>RC222946 representing NM_017982
 Red=Cloning site Blue=ORF Green=Tags(s)

TTTTGTAATACGACTCACTATAGGGCGGCCGGAATTCGTCGACTGGATCCGGTACCGAGGAGATCTGCC
 GCC**CGATCGCC**

ATGTATCATGGAATGAACCCGAGCAATGGAGATGGATTTCTAGAGCAGCAGCAGCAGCAGCAACCTC
 AGTCCCCCAGAGACTCTTGCCGTGATCCTGTGGTTTCAGCTGGCGCTGTGCTTCGGCCCTGCACAGCT
 CACGGGCGGGTTCGATGACCTTCAAGTGTGTGCTGACCCCGCATTCCCGAGAATGGCTTCAGGACCCCC
 AGCGGAGGGGTTTTCTTTGAAGGCTCTGTAGCCGATTTCACTGCCAAGACGGATTCAAGCTGAAGGGCG
 CTACAAAGAGACTGTGTTGAAGCATTTAATGGAACCCTAGGCTGGATCCCAAGTGATAATTCATCTG
 TGTGCAAGAAGATTGCCGTATCCCTCAAATCGAAGATGCTGAGATTCATAACAAGACATATAGACATGGA
 GAGAAGCTAATCATCACTTGTATGAAGGATTCAAGATCCGGTACCCCGACCTACACAATATGGTTTCAT
 TATGTCGCGATGATGGAACGTGGAATAATCTGCCATCTGTCAAGGCTGCCTGAGACCTTAGCCTCTTC
 TAATGGCTATGTAACATCTCTGAGCTCCAGACCTCCTCCCGGTGGGACTGTGATCTCCTATCGCTGC
 TTTCCCGGATTTAAACTTGATGGGTCTGCGTATCTTGAGTGCTTACAAAACCTTATCTGGTCTGCCAGCC
 CACCCCGGTGCCTTGCTCTGGAAGTCTGTCCACTACCTCCAATGGTGTGAGTACGGGAGATTTCTGCTGCCA
 CCCGCGCCTTGTGAGCGCTACAACCACGGAAGTGTGGTGGAGTTTTACTGCGATCCTGGCTACAGCCTC
 ACCAGCGACTACAAGTACATCACCTGCCAGTATGGAGAGTGGTTTCTTCTTATCAAGTCTACTGCATCA
 AATCAGAGCAAACGTGGCCAGCACCCATGAGACCCTCCTGACCAGTGGAGATTGTGGCGTTCACGGC
 AACAGTGTGCTGCTGGTGTCTGTCTGTCATCCTGGCCAGGATGTTCCAGACCAAGTTCAAGGCCAC
 TTTCCCCCAGGGGCTCCCGGAGTTCAGCAGTACCCTGACTTTGTGGTGGTAGACGGCGTCCCGC
 TCATGCTCCGCTCTATGACGAAGCTGTGAGTGGCGGCTTGAGTGCCTTAGGCCCGGTACATGGCCTC
 TGTGGGCCAGGGCTGCCCTTACCCTGGACGACCAGAGCCCCCAGCATACCCCGCTCAGGGGACACG
 GACACAGGCCAGGGGAGTCAGAAACCTGTGACAGCGTCTCAGGCTCTTCTGAGCTGCTCAAAGTCTGT
 ATTCACCTCCCAGGTGCAAGAGAGCACCCACCCTGCTTCGGACAACCCTGACATAATTGCCAGCACGGC
 AGAGGAGTGGCATCCACCAGCCAGGCATCGACATTGCAGATGAGATTCCTCTAATGGAAGAAGATCCC

ACGCGTACGCGGCCGCTCGAGCAGAAACTCATCTCAGAAGAGGATCTGGCAGCAAATGATATCCTGGATT
 ACAAGGATGACGACGATAAGGTTTAA

Protein Sequence:

>RC222946 representing NM_017982
 Red=Cloning site Green=Tags(s)

MYHGMNPSNGDGFLEQQQQQQPQSPQRLLAVILWFQLALCFGPAQLTGGFDDLQVCADPGIPENGFRT
 SGGVFEGSVARFHCQDGFKLKGLKATKRLCLKHFNGTLGWIPSDNSICVQEDCRIPQIEDAEIHNKTYRHG
 EKLITCHEGFKIRYPDLHNMVSLCRDDGTWNNLPICQGLRPLASSNGYVNISELQTSFPVGTVISYRC
 FPGFKLDGSAYLECLQNLWSSSPRCLALEVCP LPPMVSHGDFVCHPRPCERYNHGTVVEFYCDPGYSL
 TSDYKYITCQYGEWFPSYQVYCIKSEQTWPSTHETLLTTWKIVAFATSVLLVLLLVILARMFQTKFAH
 FPPRPPRSSSDPDFVVVDGVPVMLPSYDEAVSGGLSALGPGYMASVGGCPLPVDDQSPPAYPGSGDT
 DTGPGSEETCDSVSGSELLQSLYSPPRCQESTHPASDNPDIIASTAEVASTSPGIDIADIEIPLMEEDP

TRTRPLEQKLISEEDLAANDILDYKDDDDKV

Chromatograms:

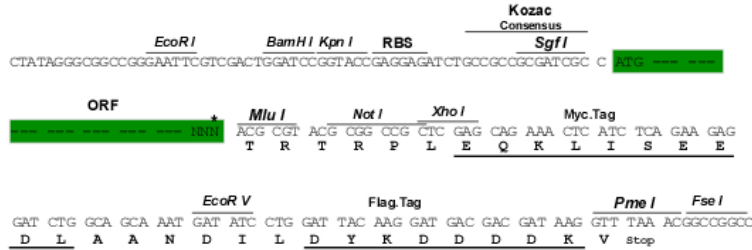
https://cdn.origene.com/chromatograms/mk6594_b08.zip

Restriction Sites:

Sgfl-Mlul

Cloning Scheme:

Cloning sites used for ORF Shutting:



* The last codon before the Stop codon of the ORF

- ACCN: NM_017982
- ORF Size: 1470 bp
- OTI Disclaimer: The molecular sequence of this clone aligns with the gene accession number as a point of reference only. However, individual transcript sequences of the same gene can differ through naturally occurring variations (e.g. polymorphisms), each with its own valid existence. This clone is substantially in agreement with the reference, but a complete review of all prevailing variants is recommended prior to use. [More info](#)
- OTI Annotation: This clone was engineered to express the complete ORF with an expression tag. Expression varies depending on the nature of the gene.
- Components: The ORF clone is ion-exchange column purified and shipped in a 2D barcoded Matrix tube containing 10ug of transfection-ready, dried plasmid DNA (reconstitute with 100 ul of water).
- Reconstitution Method:
 1. Centrifuge at 5,000xg for 5min.
 2. Carefully open the tube and add 100ul of sterile water to dissolve the DNA.
 3. Close the tube and incubate for 10 minutes at room temperature.
 4. Briefly vortex the tube and then do a quick spin (less than 5000xg) to concentrate the liquid at the bottom.
 5. Store the suspended plasmid at -20°C. The DNA is stable for at least one year from date of shipping when stored at -20°C.
- RefSeq: [NM_017982.4](#)
- RefSeq Size: 3030 bp
- RefSeq ORF: 1473 bp
- Locus ID: 55061
- UniProt ID: [Q5VX71](#)
- Cytogenetics: 1q41

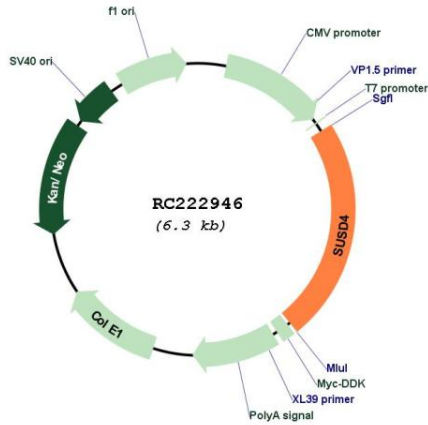
Domains: CCP

Protein Families: Transmembrane

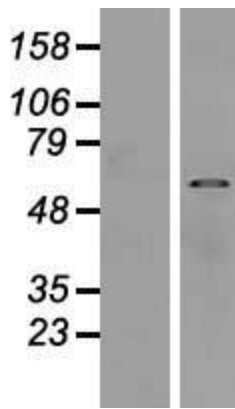
MW: 53.6 kDa

Gene Summary: Acts as complement inhibitor by disrupting the formation of the classical C3 convertase. Isoform 3 inhibits the classical complement pathway, while membrane-bound isoform 1 inhibits deposition of C3b via both the classical and alternative complement pathways. [UniProtKB/Swiss-Prot Function]

Product images:



Circular map for RC222946



Western blot validation of overexpression lysate (Cat# [LY413412]) using anti-DDK antibody (Cat# [TA50011-100]). Left: Cell lysates from untransfected HEK293T cells; Right: Cell lysates from HEK293T cells transfected with RC222946 using transfection reagent MegaTran 2.0 (Cat# [TT210002]).