

Product datasheet for **RC222939**

ONECUT3 (NM_001080488) Human Tagged ORF Clone

Product data:

Product Type:	Expression Plasmids
Product Name:	ONECUT3 (NM_001080488) Human Tagged ORF Clone
Tag:	Myc-DDK
Symbol:	ONECUT3
Synonyms:	OC3
Mammalian Cell Selection:	Neomycin
Vector:	pCMV6-Entry (PS100001)
E. coli Selection:	Kanamycin (25 ug/mL)



[View online »](#)

ORF Nucleotide Sequence:

>RC222939 representing NM_001080488
 Red=Cloning site Blue=ORF Green=Tags(s)

TTTTGTAATACGACTCACTATAGGGCGGCCGGGAATTCGTCGACTGGATCCGGTACCGAGGAGATCTGCC
 GCC**CGGATCGCC**

ATGGAGCTGAGCCTGGAGAGCCTGGGGGCTGCACAGCTGGCCACGCGCAGGCGGGCGAGCTGCTGA
 GCCCGGGCCACGCGCGCTCGGCGGGCGCAGCACCGCGCCTGGTGGCGCCCGGGCGCCGGGCGCTGGT
 GGCCGGCATGGCGAGCCTGCTGGACGGCGGGCGGGCGGGCGGGTGGGGCGCCGGGGCGCGGGCGGC
 GCGGGCAGCGGGCGGGCGGGCGGACTTCCGCGGGAACTGGCGGGCCCGCTGCACCCGGCAATGGGCA
 TGGCCTGCGAGGCGCCGGCCTGGGCGGCACCTACACGACGCTACGCCCCCTGCAGCACCTGCCCGCGT
 CGCGGCCGTGGCCGACAAGTTCACCAGCACGCGGGCGGGCGGGCGTGGCCGGGGCGCACGGGGCCAT
 CCCCACGCGCACCCGACCCGGCGGGCGCGCCCGCCCGCACCCCGCCGAGCGTCTGGCGGCCAGCG
 TGAGCGGACGCTTCAACCCTCATGCGGACGAGCGGGCGGGCGCTCGCTCCGTGGGCCACCTTACGGACC
 CTACGGCAAGGAGCTGCCCGCCATGGGGTGCCTGCTGCGCGCTGCCAACGCGCTGCCCGCCGCGCTG
 CAGGGCGCCCGAGCCCGCCCGCCGACACCCCGCGCTGGCCCGCTACGGCCCGCAGGCCACC
 TGGCTGGGGACAAGCTGCTGCCGCCCGCCCTTCGAGCCGCACGCCGCGCTGCTGGGACGCGGGAGGA
 CGCACTGGCCCGCGGGTGCCTGGAGGCGGGCGGGCACAGGCAGCGGGAGCGGGCAGCGGGAGCGCC
 GCGGGGCTGCTGGCGCCGCTGGGCGGGTGGCGGGCGGGCGGCACGGGCCGACGGGGAGGGCGGGG
 GCCCGGGCGGGAGCGGGCGGGCGGGCCAGCGGGCGCAGCGGGCAGGAGATCAACACCAAGGAGGTGGC
 GCAGCGCATCACGGCGGAGCTGAAGCGCTACAGCATCCCGAGGCAATCTTCGCGCAGCGGATCTGTGT
 CGCTCTCAGGGCACGCTCTCCGACTGCTGCGCAACCCCAAGCCGTGGAGCAAGCTCAAATCCGGCCGG
 AGACCTCCGCAAGTGTGGAAGTGGCTGCAGGAGCCAGAGTTCAGCGCATGTCGGCGCTGCGCTGGC
 AGCCTGCAAGCGCAAGGAACAGGAGCAGCAGAAGGAGCGCGCCCTGCAGCCCAAGAAGCAGCGCCTGGT
 TTCACCGACTGCAGCGACGACGCTGATGCCATCTTCAAGGAGAACAAGCGGGCTCCAGGAGATGC
 AGGTACCATCTCGCAGCAGCTCGGCTTGGAGCTCAACACCGTCAGCAACTTCTCATGAACGCGCGGGC
 CCGCTGCATGAACCGCTGGGCTGAGGAGCCAGCACGGCCCCGGGGCCCGCCGGCGCCACGGCCACT
 TTCTCAAAGGCC

ACGGTACGGCGCGCTCGAGCAGAACTCATCTCAGAAGAGGATCTGGCAGCAAATGATATCTGGATT
ACAAGGATGACGACGATAAGGTTTAA

Protein Sequence:

>RC222939 representing NM_001080488
 Red=Cloning site Green=Tags(s)

MELSLESLLGHSVAHAQAGELLSPGHARSAAAQHRGLVAPGRPGLVAGMASLLDGGGGGGGGAGGAGG
 AGSAGGGADFRGELAGPLHPAMGMACEAPGLGGTYTTLTPLQHLPLAAVADKFKHAAAAAVAGAHGGH
 PHAHPHAAAAPPPPPQRLAASVSGSFTLMRDERAALASVGHLYGYPYKELPAMGSPLSPLPNALPPAL
 HGAPQPPPPPPPLAAYGPPGHLAGDKLLPPAAFEPHAALLGRAEDALARGPLPGGGGTGSGGAGSGSA
 AGLLAPLGLAAAGAHGPHGGGGPGSGGGPSAGAAEEINTKEVAQRITAELKRYISIPQAIFAQRILC
 RSQGTLSDLLRNPKPWSKLSGRETFRRMWKWLQEPFQMSALRLAACKRKEQEQQKERALQPKKQRLV
 FTDLQRRTLIAIFKENKRPSKEMQVTISQQLGLELNTVSNFFMNARRRCMNRWAEESTAPGGPAGATAT
 FSKA

TRTRPLEQKLISEEDLAANDILDYKDDDDKV

Chromatograms:

https://cdn.origene.com/chromatograms/mk8046_a06.zip

Restriction Sites:

SgfI-MluI

Cloning Scheme:


ACCN: NM_001080488

ORF Size: 1482 bp

OTI Disclaimer: The molecular sequence of this clone aligns with the gene accession number as a point of reference only. However, individual transcript sequences of the same gene can differ through naturally occurring variations (e.g. polymorphisms), each with its own valid existence. This clone is substantially in agreement with the reference, but a complete review of all prevailing variants is recommended prior to use. [More info](#)

OTI Annotation: This clone was engineered to express the complete ORF with an expression tag. Expression varies depending on the nature of the gene.

Components: The ORF clone is ion-exchange column purified and shipped in a 2D barcoded Matrix tube containing 10ug of transfection-ready, dried plasmid DNA (reconstitute with 100 ul of water).

Reconstitution Method:

1. Centrifuge at 5,000xg for 5min.
2. Carefully open the tube and add 100ul of sterile water to dissolve the DNA.
3. Close the tube and incubate for 10 minutes at room temperature.
4. Briefly vortex the tube and then do a quick spin (less than 5000xg) to concentrate the liquid at the bottom.
5. Store the suspended plasmid at -20°C. The DNA is stable for at least one year from date of shipping when stored at -20°C.

RefSeq: [NM_001080488.2](#)

RefSeq Size: 1485 bp

RefSeq ORF: 1485 bp

Locus ID: 390874

UniProt ID: [O60422](#)

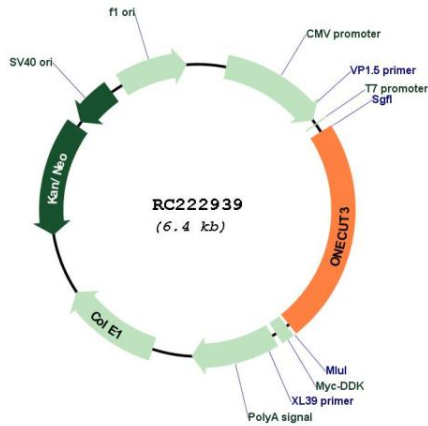
Cytogenetics: 19p13.3

Protein Families: Druggable Genome

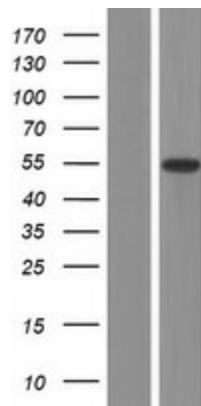
MW: 49.9 kDa

Gene Summary: Transcriptional activator. Binds the consensus DNA sequence 5'-DHWATTGAYTWWD-3' on a variety of gene promoters such as those of HNF3B and TTR (By similarity).[UniProtKB/Swiss-Prot Function]

Product images:



Circular map for RC222939



Western blot validation of overexpression lysate (Cat# [LY421043]) using anti-DDK antibody (Cat# [TA50011-100]). Left: Cell lysates from untransfected HEK293T cells; Right: Cell lysates from HEK293T cells transfected with RC222939 using transfection reagent MegaTran 2.0 (Cat# [TT210002]).