

## Product datasheet for **RC222932**

### Neuroigin 4 (NLGN4X) (NM\_020742) Human Tagged ORF Clone

#### Product data:

Product Type:	Expression Plasmids
Product Name:	Neuroigin 4 (NLGN4X) (NM_020742) Human Tagged ORF Clone
Tag:	Myc-DDK
Symbol:	Neuroigin 4
Synonyms:	ASPGX2; AUTSX2; HLNX; HNL4X; NLGN4
Mammalian Cell Selection:	Neomycin
Vector:	pCMV6-Entry (PS100001)
E. coli Selection:	Kanamycin (25 ug/mL)



[View online »](#)

**ORF Nucleotide Sequence:**

>RC222932 representing NM\_020742  
 Red=Cloning site Blue=ORF Green=Tags(s)

TTTTGTAATACGACTCACTATAGGGCGGCCGGGAATTCGTCGACTGGATCCGGTACCGAGGAGATCTGCC  
 GCC**CGGATCGCC**

ATGTCACGGCCCCAGGGACTGCTATGGCTTCCTTTGTTGTTACCCCGGTCTGCGTCATGTTAAACTCCA  
 ATGTCCTCCTGTGGTTAACTGCTCTTGCCATCAAGTTCACCCCTATTGACAGCCAAGCACAGTATCCAGT  
 TGTC AACACAAATTATGGCAAAATCCGGGGCCTAAGAACACCGTTACCCAATGAGATCTTGGGTCCAGTG  
 GAGCAGTACTTAGGGGTCCCCTATGCCTCACCCCCACTGGAGAGAGCGGTTTCAGCCCCAGAACCCC  
 CGTCTCCTGGACTGGCATCCGAAATACTACTCAGTTTGTGCTGTGCCCCCAGCACCTGGATGAGAG  
 ATCCTTACTGCATGACATGCTGCCCATCTGGTTTACCGCAATTTGGATACTTTGATGACCTATGTTCAA  
 GATCAAAATGAAGACTGCCTTTACTTAAACATCTACGTGCCACGGAAGATGATATTCATGATCAGAACA  
 GTAAGAAGCCCGTCATGGTCTATATCCATGGGGGATCTTACATGGAGGGCACCGGCAACATGATTGACGG  
 CAGCATTTTGGCAAGCTACGGAACGTCATCGTGATCACCATTAACCTACCGTCTGGGAATACTAGGGTTT  
 TTAAGTACCGGTGACCAGGCAGCAAAAGGCAACTATGGGCTCCTGGATCAGATTC AAGCACTGCGGTGGA  
 TTGAGGAGAATGTGGGAGCCTTTGGCGGGACCCCAAGAGAGTGACCATCTTTGGCTCGGGGGCTGGGGC  
 CTCCTGTGTGACGCTGTTGACCTGTCCCCTACTCAGAAGGTCTCTTCCAGAAGGCCATCATTAGAGC  
 GGCACCGCCCTGTCCAGCTGGGACAGTGAATACCAGCCGCAAGTACACTCGGATATTGGCAGACAAGG  
 TCGGCTGCAACATGCTGGACACCACGGACATGGTAGAATGCCTGCGGAACAAGAATAACAAGGAGTCAT  
 CCAGCAGACCATCACCCGGCCACTACCATAGCCTTCGGGCCGATCGACGGCGAGTCATCCCA  
 GACGACCCCGAGTCTGATGGAGCAAGCGAGTTCCTCAACTACGACATCATGCTGGGCGTCAACCAAG  
 GGAAGGCTGAAGTTCTGTGGACGTCATCGTGGATAACGAGGACGGTGTGACGCCCAACGCTTTGACTT  
 CTCCTGTCCAACCTTCGTGGACAACCTTACGGCTACCCTGAAGGAAAGACACTTTGCGGGAGACTATC  
 AAGTTCATGTACACAGACTGGGCGGATAAGGAAAACCCGAGACGCGGGGAAAACCTGGTGGCTCTCT  
 TTAAGTACAGGAGTGGGTGGCCCGCGGTGGCCACCGCGACCTGCACGCGCAGTACGGCTCCCCAC  
 CTACTTCTATGCCTTCTATCATCACTGCCAAAGCGAAATGAAGCCAGCTGGGCAGATTCGGCCATGGT  
 GATGAGGTCCCCTATGTCTTCGGCATCCCATGATCGGTCCCACCGAGCTCTTCACTTTGAACTTTTCCA  
 AGAACGACGTGCTCAGCGCCGTGGTACATGACCTACTGGACGAACTTCGCCAAAACCTGGTGATCCAAA  
 TCAACCAGTTCCTCAGGATACCAAGTTCATTACACAAAACCCAAACCGCTTTGAAGAAGTGGCTGGTCC  
 AAGTATAATCCCAAAGACAGCTCTATCTGCATATTGGCTTGAACCCAGAGTGAGAGATCACTACCGGG  
 CAACGAAAGTGGCTTTCTGGTTGAACTCGTTCCTCATTTCACAACTTGAACGAGATATCCAGTATGT  
 TTCAACAACCCAAAGGTTCTCCACCAGACATGACATCATTTCCCTATGGCACCCGCGGATCTCCCGCC  
 AAGATATGGCAAACCAACGACCAACGCAATCACTCCTGCCAACAACTCCAAAACCTCTAAGGACCCCTC  
 ACAAACAGGGCCTGAGGACACAACCTGTCTCATTGAAACCAACGAGATTATCCACCGAATTAAGTGT  
 CACCATTGCCGTGCGGGCGTCTCTCTTCTCAACATCTTAGCTTTTGGCGGCTGTACTACAAAAAG  
 GACAAGAGGCGCCATGAGACTCACAGGCGCCCCAGTCCCAGAGAAACACCACAAATGATATCGCTCACA  
 TCCAGAACGAAGAGATCATGTCTCTGCAGATGAAGCAGCTGGAACACGATCACGAGTGTGAGTGTGCTGCA  
 GGCACACGACACTGAGGCTCACCTGCCCGCCAGACTACACCTCACGCTGCGCCGGTCCGACAGATGAC  
 ATCCCCTTATGACGCCAAACCATCACCATGATTTCAAACACACTGACGGGGATGCAGCTTTGCACA  
 CTTTTAACACCTTCAGTGGAGGACAAAACAGTACAAATTTACCCACGGACATTCACCCTAGAGTA

**ACGCGT**ACGCGGCGCTCGAGCAGAACTCATCTCAGAAGAGGATCTGGCAGCAATGATATCCTGGATT  
 ACAAGGATGACGACGATAAGGTTTAA

**Protein Sequence:** >RC222932 representing NM\_020742  
Red=Cloning site Green=Tags(s)

MSRPQGLLWLPPLFTPCVMLNSNVLLWLTALAIKFTLIDSQAQYPVVNTNYGKIRGLRTPLPNEILGPV  
EQYLGVPYASPTGERRFPPEPPSSWTGIRNTTQFAAVCPQHLDERSLLHDMLPIWFTANLDTLMTYVQ  
DQNEDECLYLNIIYVPTEDDIHDQNSKKPVMVYIHGGSYMEGTGNMIDGSILASYGNVIVITINYRLGILGF  
LSTGDQAAKGNYGLLDQIQALRWIEENVGAFGGDPKRVTFGSGAGASCVSLTLTSHYSEGLFQKAIQS  
GTALSSWAVNYQPAKYTRILADKVGCMNLDTTDMVECLRKNKYKELIQQTITPATYHIAFGPVIDGDVIP  
DDPQILMEQGEFLNYDIMLGVNQGEGLKFVDGIVDNEGDVTPNDFDFSVSNFVDNLYGYPEGKDTLRETI  
KFMYPDWADKENPERRKTLVALFTDHQWVAPAVATADLHAQYGSPTYFYAFYHHCQSEMKPSWADSAHG  
DEVYVYVFGIPMIGPTLFSNCFKNDVMSAVVMTYWTFNAKTGDPNQVPVQDTKFIHTKPNRFEEVAWS  
KYNPKDQLYLHIGLKPRVRDHYRATKVAFWLELVPHLHNLNEIFQYVSTTTKVPDDMTSFPYGTTRSPA  
KIWPTTKRPAITPANNPKHSDPHKTGPEDTTVLIETKRDYSTEIVTAVGASLLFLNILAFAALYYKK  
DKRRHETHRRPSPQRNTNDIAHIQNEEIMSLQMKQLEHDHECESLQAHTLRLTCPDPYTLTLRRSPDD  
IPLMTPNTITMIPNTLTGMQPLHTFNTFSGGQNSTNLPHGHSTTRV

TRTRPLEQKLI SEEDLAANDILDYKDDDDKV

**Chromatograms:** [https://cdn.origene.com/chromatograms/mk6237\\_g05.zip](https://cdn.origene.com/chromatograms/mk6237_g05.zip)

**Restriction Sites:** Sgfl-Mlul

**Cloning Scheme:**


**ACCN:** NM\_020742

**ORF Size:** 2448 bp

**OTI Disclaimer:** The molecular sequence of this clone aligns with the gene accession number as a point of reference only. However, individual transcript sequences of the same gene can differ through naturally occurring variations (e.g. polymorphisms), each with its own valid existence. This clone is substantially in agreement with the reference, but a complete review of all prevailing variants is recommended prior to use. [More info](#)

**OTI Annotation:** This clone was engineered to express the complete ORF with an expression tag. Expression varies depending on the nature of the gene.

**Components:** The ORF clone is ion-exchange column purified and shipped in a 2D barcoded Matrix tube containing 10ug of transfection-ready, dried plasmid DNA (reconstitute with 100 ul of water).

**Reconstitution Method:**

1. Centrifuge at 5,000xg for 5min.
2. Carefully open the tube and add 100ul of sterile water to dissolve the DNA.
3. Close the tube and incubate for 10 minutes at room temperature.
4. Briefly vortex the tube and then do a quick spin (less than 5000xg) to concentrate the liquid at the bottom.
5. Store the suspended plasmid at -20°C. The DNA is stable for at least one year from date of shipping when stored at -20°C.

**RefSeq:** [NM\\_020742.3](#)

**RefSeq Size:** 5706 bp

**RefSeq ORF:** 2451 bp

**Locus ID:** 57502

**UniProt ID:** [Q8N0W4](#)

**Cytogenetics:** Xp22.32-p22.31

**Domains:** COesterase

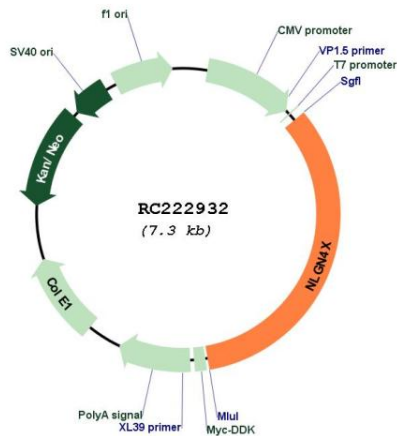
**Protein Families:** Druggable Genome, Transmembrane

**Protein Pathways:** Cell adhesion molecules (CAMs)

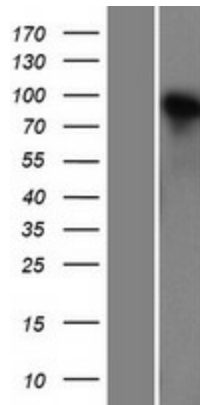
**MW:** 91.7 kDa

**Gene Summary:** This gene encodes a member of the type-B carboxylesterase/lipase protein family. The encoded protein belongs to a family of neuronal cell surface proteins. Members of this family may act as splice site-specific ligands for beta-neurexins and may be involved in the formation and remodeling of central nervous system synapses. The encoded protein interacts with discs large homolog 4 (DLG4). Mutations in this gene have been associated with autism and Asperger syndrome. Alternative splicing results in multiple transcript variants. [provided by RefSeq, Aug 2013]

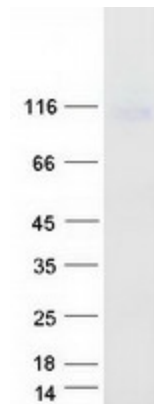
Product images:



Circular map for RC222932



Western blot validation of overexpression lysate (Cat# [LY412367]) using anti-DDK antibody (Cat# [TA50011-100]). Left: Cell lysates from untransfected HEK293T cells; Right: Cell lysates from HEK293T cells transfected with RC222932 using transfection reagent MegaTran 2.0 (Cat# [TT210002]).



Coomassie blue staining of purified NLGN4X protein (Cat# [TP322932]). The protein was produced from HEK293T cells transfected with NLGN4X cDNA clone (Cat# RC222932) using MegaTran 2.0 (Cat# [TT210002]).