

## Product datasheet for RC222924

### CCR10 (NM\_016602) Human Tagged ORF Clone

#### Product data:

Product Type:	Expression Plasmids
Product Name:	CCR10 (NM_016602) Human Tagged ORF Clone
Tag:	Myc-DDK
Symbol:	CCR10
Synonyms:	GPR2
Mammalian Cell Selection:	Neomycin
Vector:	pCMV6-Entry (PS100001)
E. coli Selection:	Kanamycin (25 ug/mL)
ORF Nucleotide Sequence:	>RC222924 representing NM_016602 Red=Cloning site Blue=ORF Green=Tags(s)

TTTTGTAATACGACTCACTATAGGGCGGCCGGAATTCGTCGACTGGATCCGGTACCGAGGAGATCTGCCGCCGCGATCGCC

ATGGGGACGGAGGCCACAGAGCAGGTTTCTGGGGCCATTACTCTGGGGATGAAGAGGACGCATACTCGGCTGAGCCACTGCCGGAGCTTTGCTACAAGGCCGATGTCCAGGCCCTCAGCCGGGCCTTCAAACCCAGTGTCTCCCTGACCGTGGCTGCGCTGGGTCTGGCCGGCAATGGCCTGGTCTGGCCACCCACCTGGCAGCCCGACGCGCAGCGCGCTCGCCACCTCTGCCACCTGCTCCAGCTGGCCCTGGCCGACCTTTGCTGGCCCTGACTCTGCCCCTCGCGGCAGCAGGGGCTTTCAGGGCTGGAGTCTGGGAAGTGCCACCTGCCGACCATCTCTGGCCTACTCGGCCTCCTTCCAGCCGGCTTCTCTTCTGGCCTGTATCAGCGCCGACCGCTACGTGGCCATCGCGGAGCGCTCCCAGCCGGCCGCGGCCCTCCACTCCCAGCCGCGCACACTTGGTCTCCGTCA TCGTGTGGCTGTGCTCACTGCTCCTGGCGCTGCCTGCGCTGCTCTTACGCCAGGATGGGAGCGGGAAGG CCAACGACGCTGTGCGCTCATCTTCCCCGAGGGCCTCACGCAGACGGTGAAGGGGGCAGCGCCGTGGCG CAGGTGGCCCTGGGCTTCGCGCTGCCGCTGGCGTCATGGTAGCCTGCTACGCGCTTCTGGGCGTACGC TGCTGGCCGCCAGGGGGCCGAGCGCCGGCGTGCCTGCGCGTGTGGTGGCTCTGGTGGCGGCCTTCGT GGTGCTGCAGTGCCTACAGCCTCGCCCTGCTGCTGGATACTGCCGATCTACTGGCTGCGCGGAGCGG AGCTGCCCTGCCAGCAAACGCAAGGATGTCGCACTGCTGGTACCAGCGGCTTGGCCCTCGCCCGCTGTG GCCTCAATCCCCTTCTCTACGCCTTCTGGGCCTGCGCTTCCGCCAGGACCTGCGGAGGCTGCTACGGGG TGGGAGCTGCCCTCAGGGCCTCAACCCCGCCGCGGCTGCCCCCGCGGCCCTTTCTCTCTGCTCA GCTCCACGGAGACCCACAGTCTCTCTGGGACAAC

ACGCGTACGCGGCCGCTCGAGCAGAACTCATCTCAGAAGAGGATCTGGCAGCAAATGATATCCTGGATTACAAGGATGACGACGATAAGGTTAA



[View online »](#)

**Protein Sequence:** >RC222924 representing NM\_016602  
Red=Cloning site Green=Tags(s)

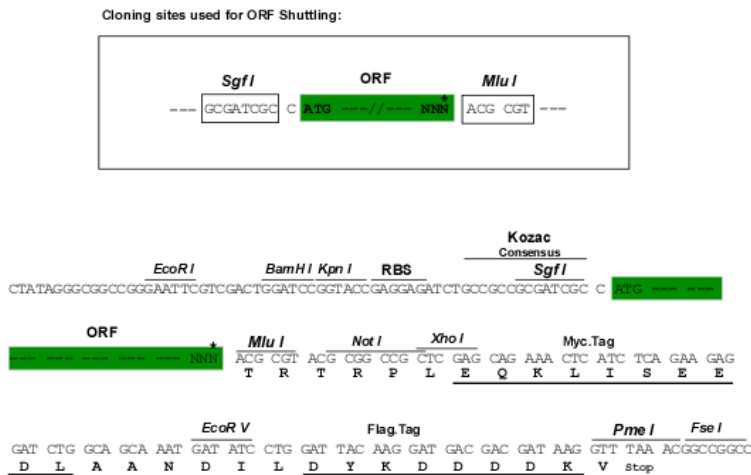
MGTEATEQVSWGHSYGDEEDAYSAEPLPELCYKADVQAFSRAFQPSVSLTVAALGLAGNGLVLATHLAAR  
 RAARSPSAHLLQLALADLLLAL TLPFAAAGALQGWSLGSATCRTISGLYSASFHAGFLFLACISADRYV  
 AIARALPAGPRPSTPGRAHLVSVIVWLLSLLLALPALLFSQDGGQREGQRRCLIFPEGLTQTVKGASAVA  
 QVALGFALPLGVMVACYALLGRTLLAARGPERRRALRVVVALVAAFVVLQLPYSLALLLDTADLLAARER  
 SCPASKRKDVALLVTSGLALARCLNPVLYAFLGLRFRQDLRLLLRGGSCPSGPQPRRGCPRRRLSSCS  
 APTETHLSLWDN

TRTRPLEQKLISEEDLAANDILDYKDDDDKV

**Chromatograms:** [https://cdn.origene.com/chromatograms/mk6096\\_h09.zip](https://cdn.origene.com/chromatograms/mk6096_h09.zip)

**Restriction Sites:** SgfI-MluI

**Cloning Scheme:**



\* The last codon before the Stop codon of the ORF

**ACCN:** NM\_016602

**ORF Size:** 1086 bp

**OTI Disclaimer:** The molecular sequence of this clone aligns with the gene accession number as a point of reference only. However, individual transcript sequences of the same gene can differ through naturally occurring variations (e.g. polymorphisms), each with its own valid existence. This clone is substantially in agreement with the reference, but a complete review of all prevailing variants is recommended prior to use. [More info](#)

**OTI Annotation:** This clone was engineered to express the complete ORF with an expression tag. Expression varies depending on the nature of the gene.

**Components:** The ORF clone is ion-exchange column purified and shipped in a 2D barcoded Matrix tube containing 10ug of transfection-ready, dried plasmid DNA (reconstitute with 100 ul of water).

**Reconstitution Method:**

1. Centrifuge at 5,000xg for 5min.
2. Carefully open the tube and add 100ul of sterile water to dissolve the DNA.
3. Close the tube and incubate for 10 minutes at room temperature.
4. Briefly vortex the tube and then do a quick spin (less than 5000xg) to concentrate the liquid at the bottom.
5. Store the suspended plasmid at -20°C. The DNA is stable for at least one year from date of shipping when stored at -20°C.

**RefSeq:** [NM\\_016602.3](#)

**RefSeq Size:** 1244 bp

**RefSeq ORF:** 1089 bp

**Locus ID:** 2826

**UniProt ID:** [P46092](#)

**Cytogenetics:** 17q21.2

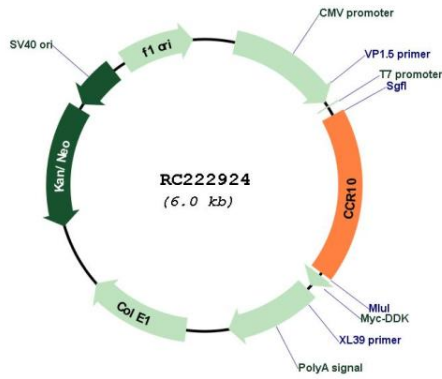
**Protein Families:** Druggable Genome, GPCR, Transmembrane

**Protein Pathways:** Chemokine signaling pathway, Cytokine-cytokine receptor interaction

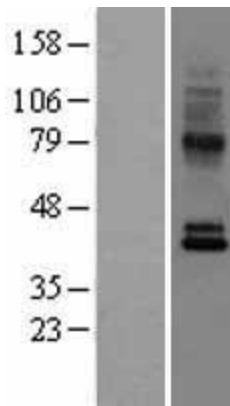
**MW:** 38.2 kDa

**Gene Summary:** Chemokines are a group of small (approximately 8 to 14 kD), mostly basic, structurally related molecules that regulate cell trafficking of various types of leukocytes through interactions with a subset of 7-transmembrane, G protein-coupled receptors. Chemokines also play fundamental roles in the development, homeostasis, and function of the immune system, and they have effects on cells of the central nervous system as well as on endothelial cells involved in angiogenesis or angiostasis. Chemokines are divided into 2 major subfamilies, CXC and CC, based on the arrangement of the first 2 of the 4 conserved cysteine residues; the 2 cysteines are separated by a single amino acid in CXC chemokines and are adjacent in CC chemokines. CCR10 is the receptor for CCL27 (SCYA27; MIM 604833); CCR10-CCL27 interactions are involved in T cell-mediated skin inflammation (Homey et al., 2002 [PubMed 11821900]).[supplied by OMIM, Mar 2008]

Product images:



Circular map for RC222924



Western blot validation of overexpression lysate (Cat# [LY402573]) using anti-DDK antibody (Cat# [TA50011-100]). Left: Cell lysates from untransfected HEK293T cells; Right: Cell lysates from HEK293T cells transfected with RC222924 using transfection reagent MegaTran 2.0 (Cat# [TT210002]).