

## Product datasheet for **RC222922**

### **SLC15A1 (NM\_005073) Human Tagged ORF Clone**

#### **Product data:**

Product Type:	Expression Plasmids
Product Name:	SLC15A1 (NM_005073) Human Tagged ORF Clone
Tag:	Myc-DDK
Symbol:	SLC15A1
Synonyms:	HPECT1; HPEPT1; PEPT1
Mammalian Cell Selection:	Neomycin
Vector:	pCMV6-Entry (PS100001)
E. coli Selection:	Kanamycin (25 ug/mL)



[View online »](#)

**ORF Nucleotide  
Sequence:**

>RC222922 ORF sequence  
 Red=Cloning site Blue=ORF Green=Tags(s)

TTTTGTAATACGACTCACTATAGGGCGGCCGGAATTCGTCGACTGGATCCGGTACCGAGGAGATCTGCC  
 GCC**CGGATCGCC**

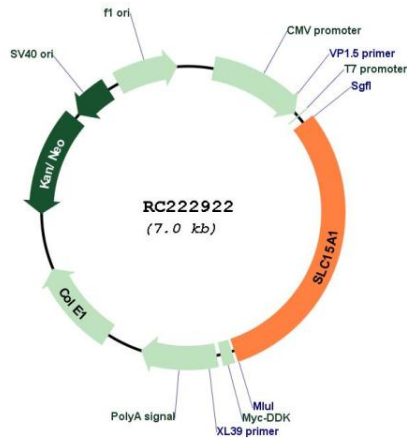
ATGGGAATGTCCAAATCACACAGTTTCTTTGGTTATCCCCTGAGCATCTTCTTCATCGTGGTCAATGAGT  
 TTTGCGAAAGATTTTCTACTATGGAATGCGAGCAATCCTGATTCTGTACTTCACAAATTCATCAGCTG  
 GGATGATAACCTGTCCACCGCCATCTACCATACGTTTGTGGCTCTGTGCTACCTGACGCCAATTCTCGGA  
 GCTCTTATCGCCGACTCGTGGCTGGGAAAGTTCAAGACCATTGTGTGCTCTCCATTGTCTACACAATTG  
 GACAAGCAGTCACCTCAGTAAGCTCCATTAATGACCTCACAGACCACAACCATGATGGCACCCCCGACAG  
 CCTTCTGTGCACGTGGTGTCTTGTGCTCGGCTGGCCCTGATAGCTCTCGGGACTGGAGGAATCAAA  
 CCCTGTGTGTCTGCGTTTGGTGGAGATCAGTTTGAAGAGGGCCAGGAGAAACAAAGAAACAGATTTTTTT  
 CCATCTTTTACTTGGCTATTAATGCTGGAAGTTTGTCTTCCACAATCATCACACCCATGCTCAGAGTTCA  
 ACAATGTGGAATTCACAGTAAACAAGCTTGTACCCTGACCTTGGGGTTCTGCTGCTCTCATGGCT  
 GTAGCCCTGATTGTGTTTGTCTTGGCAGTGGGATGTACAAGAAGTTCAAGCCACAGGGCAACATCATGG  
 GTAAGTGGCCAAGTGCATCGGTTTTGCCATCAAAAATAGATTTAGGCATCGGAGTAAGGCATTTCCCAA  
 GAGGGAGCACTGGCTGGACTGGGCTAAAGAGAAATACGATGAGCGGCTCATCTCCCAAATTAAGATGGTT  
 ACGAGGGTGATGTTTCTGTATATCCACTCCCAATGTTCTGGGCCTTGTGACCAGCAGGGCTCCAGGT  
 GGACACTGCAGGCAACAATAATGTCGGGAAAAATCGGAGCTCTTGAATTCAGCCCGATCAGATGCAGAC  
 CGTGAACGCCATCCTGATCGTGATCATGGTCCCGATCTTCGATGCTGTGCTGTACCCTCTCATTGCAAAA  
 TGTGGCTTCAATTCACCTCCTTGAAGAAGATGGCAGTTGGCATGGTCTGGCCTCCATGGCCTTTGTGG  
 TGGCTGCCATCGTGCAGGTGAAATCGATAAACTCTTCCAGTCTTCCCAAAGGAAACGAAGTCCAAAT  
 TAAAGTTTTGAATATAGGAAACAATAACCATGAATATATCTTCTTGGAGAGATGGTGACACTTGGCCCA  
 ATGTCTCAAACAATGCATTTATGACTTTTGTGTAAACAACACTGACAAGGATAAACATTTCTTCTCCTG  
 GATCACCACTGCTGCCGTAAGTACGACTTCAAGCAGGGCCAACGCCACACGCTTCTAGTGTGGGCCCC  
 CAATCACTACCAGGTGGTAAAGGATGGTCTTAACCAGAAGCCAGAAAAAGGGGAAATGGAATCAGATTT  
 GTAATACTTTTAAACGAGCTCATCACCATCACAATGAGTGGGAAAGTTTATGCAAACATCAGCAGCTACA  
 ATGCCAGCACATACCAGTTTTTCTTCTGGCATAAAAGGCTTCAACAATAAGCTCAACAGAGATTCGGCC  
 ACAATGTCAACCTAATTTCAATACTTTCTACCTTGAATTTGGTAGTGCTTATACCTATATAGTCCAAAGG  
 AAGAATGACAGCTGCCCTGAAGTGAAGGTGTTGAAGATATTTAGCCAACACAGTTAACATGGCTCTGC  
 AAATCCCAGATATTTTCTCTACCTGTGGCGAAGTGGTCTTCTCTGTACGGGATTGGAATTCATA  
 TTCTCAGGCTCCTTCAACATGAAGTGGTGTTCAGGCAGGATGGCTGCTGACCGTGGCTGTTGGAAC  
 ATCATTGTGCTCATCGTGGCAGGGGCGAGCCAGTTAGCAAAACAGTGGGCGGAGTACATTCTATTTGCCG  
 CGTTGCTTCTGGTGTGTGTAATTTTGGCATCATGGCTCGGTTCTATACTTACATCAACCCAGCGGA  
 GATCGAAGCTCAATTTGATGAGGATGAAAAGAAAAACAGACTGGAAAAGAGTAACCCATATTTTATGTCA  
 GGGCCAATTCACAGAAACAGATG

**ACGCGT**ACGCGGCCGCTCGAGCAGAACTCATCTCAGAAGAGGATCTGGCAGCAAATGATATCCTGGATT  
 ACAAGGATGACGACGATAAGGTTTAA

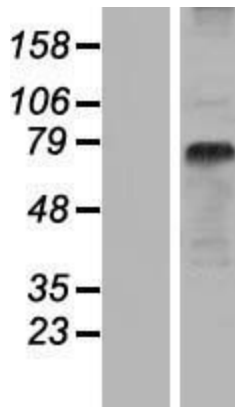


<b>OTI Disclaimer:</b>	<p>Due to the inherent nature of this plasmid, standard methods to replicate additional amounts of DNA in E. coli are highly likely to result in mutations and/or rearrangements. Therefore, OriGene does not guarantee the capability to replicate this plasmid DNA. Additional amounts of DNA can be purchased from OriGene with batch-specific, full-sequence verification at a reduced cost. Please contact our customer care team at <a href="mailto:custsupport@origene.com">custsupport@origene.com</a> or by calling 301.340.3188 option 3 for pricing and delivery.</p> <p>The molecular sequence of this clone aligns with the gene accession number as a point of reference only. However, individual transcript sequences of the same gene can differ through naturally occurring variations (e.g. polymorphisms), each with its own valid existence. This clone is substantially in agreement with the reference, but a complete review of all prevailing variants is recommended prior to use. <a href="#">More info</a></p>
<b>OTI Annotation:</b>	<p>This clone was engineered to express the complete ORF with an expression tag. Expression varies depending on the nature of the gene.</p>
<b>Components:</b>	<p>The ORF clone is ion-exchange column purified and shipped in a 2D barcoded Matrix tube containing 10ug of transfection-ready, dried plasmid DNA (reconstitute with 100 ul of water).</p>
<b>Reconstitution Method:</b>	<ol style="list-style-type: none"><li>1. Centrifuge at 5,000xg for 5min.</li><li>2. Carefully open the tube and add 100ul of sterile water to dissolve the DNA.</li><li>3. Close the tube and incubate for 10 minutes at room temperature.</li><li>4. Briefly vortex the tube and then do a quick spin (less than 5000xg) to concentrate the liquid at the bottom.</li><li>5. Store the suspended plasmid at -20°C. The DNA is stable for at least one year from date of shipping when stored at -20°C.</li></ol>
<b>RefSeq:</b>	<a href="#">NM_005073.4</a>
<b>RefSeq Size:</b>	3142 bp
<b>RefSeq ORF:</b>	2127 bp
<b>Locus ID:</b>	6564
<b>UniProt ID:</b>	<a href="#">P46059</a>
<b>Cytogenetics:</b>	13q32.2-q32.3
<b>Protein Families:</b>	Transmembrane
<b>MW:</b>	78.8 kDa
<b>Gene Summary:</b>	<p>This gene encodes an intestinal hydrogen peptide cotransporter that is a member of the solute carrier family 15. The encoded protein is localized to the brush border membrane of the intestinal epithelium and mediates the uptake of di- and tripeptides from the lumen into the enterocytes. This protein plays an important role in the uptake and digestion of dietary proteins. This protein also facilitates the absorption of numerous peptidomimetic drugs. [provided by RefSeq, Apr 2010]</p>

Product images:



Circular map for RC222922



Western blot validation of overexpression lysate (Cat# [LY417557]) using anti-DDK antibody (Cat# [TA50011-100]). Left: Cell lysates from untransfected HEK293T cells; Right: Cell lysates from HEK293T cells transfected with RC222922 using transfection reagent MegaTran 2.0 (Cat# [TT210002]).