

## Product datasheet for **RC222915**

### **CELF2 (NM\_001025077) Human Tagged ORF Clone**

#### **Product data:**

Product Type:	Expression Plasmids
Product Name:	CELF2 (NM_001025077) Human Tagged ORF Clone
Tag:	Myc-DDK
Symbol:	CELF2
Synonyms:	BRUNOL3; CELF-2; CUG-BP2; CUGBP2; ETR-3; ETR3; NAPOR
Mammalian Cell Selection:	Neomycin
Vector:	pCMV6-Entry (PS100001)
E. coli Selection:	Kanamycin (25 ug/mL)



[View online »](#)

**ORF Nucleotide Sequence:**

>RC222915 representing NM\_001025077  
 Red=Cloning site Blue=ORF Green=Tags(s)

TTTTGTAATACGACTCACTATAGGGCGGCCGGAATTCGTCGACTGGATCCGGTACCGAGGAGATCTGCC  
 GCC**CGGATCGCC**

ATGCGCTGTCCAAATCCGCTGTTACTATGAGAAATGAAGAGCTGCTTTTAAAGTAACGGCACAGCCAACA  
 AGATGAACGGAGCTTTGGATCACTCAGACCAACCAGACCCAGATGCCATTAAGATGTTTGTGGACAGAT  
 CCCCCGGTCATGGTCGGAAGGAGCTGAAAGAACTTTTTGAGCCTTACGGAGCCGCTTACCAGATCAAC  
 GTCCTCCGGGACCGGAGTCAGAACCTCCGCAGAGTAAAGGTTGTTGTTTCGTAACATTTTATACAAGAA  
 AAGCTGCACTTGAGGCCAGAAATGCACTGCACAATATTAATACTTTACCTGGGATGCATCATCCCATTCA  
 GATGAAACCTGCAGATAGTGAAGTCCAACGCTGTGGAAGACAGAAAATGTTTCATAGGAATGGTATCG  
 AAGAAATGTAATGAGAACGACATCAGGGTGTCTCTCCATTTGGCCAGATAGAAGAATGCCGGATCC  
 TCCGGGGACCTGATGGGCTGAGTCGAGGCTGTGCGTTTGTACATTTTACAAGGGCAATGGCACAGAA  
 TGCAATCAAAGCCATGCATCAGTCTCAGACCATGGAGGGCTGCTCTTACCTATCGTGGTGAAGTTTGT  
 GACACTCAGAAGGACAAAAGACAAAGGCCCTCCAGCAGCAGCTCGCTCAGCAGATGCAGCAGCTCAACA  
 CTGCCACCTGGGGAACTGACAGGGCTGGGCGGACTGACCCACAGTATCTGGCGCTCCTGCAGCAGGC  
 CACCTCCTCCAGCAACCTGGGTGCGTTCAGCGCATTCAACAAATGGCAGGCATGAATGCTTTACAGTTG  
 CAGAACCTGGCGACGCTGGCTGCTGCTGACGCTGCGGCCAGACCTCAGCCACCAGCACCATGCAAACC  
 CTCTCTTACCACGAGCAGCGCCCTGGGAGCCCTCAGAGTCCCGTGGCTGCTTCAACCCCCAACCTCCAC  
 TGCTGGTGAGCCATGAATCCTTGACCTCTCTCGGGACTCTGCAAGGACTGGCTGGAGCCACTGTTGGA  
 CTGAATAATATTAATGCACTAGCAGGTATGGCGGCTCTGAATGGAGGACTTGGCGCCACAGGCTTGACGA  
 ATGGCAGGGCTGGCACCATGGACGCCCTCACCCAGGCCACTCAGGAATCAACAGTACGCAGCCGCCGCC  
 GCTGCCCACTCTGTACAGCCAGAGCCTGCTGCAGCAGCAGAGCGCTGCAGGCAGCCAGAAGGAAGGTCCA  
 GAGGGGGCAAACCTCTTTATTTACCACCTTCCACAGGAATTTGGAGACCAGGACATTCTGCAGATGTTCA  
 TGCCTTTTGAAAATGTTATCTCTGCTAAAGTCTTCATTGACAAACAGACCAATCTGAGCAAGTGCTTTGG  
 TTTTGTTAGTACGACAATCCAGTCTCTGCACAAGCTGCTATCCAAGCTATGAATGGCTTTCAGATCGGC  
 ATGAAACGCTTGAAGGTGCAGCTGAAGCGTTCCAAAAACGACAGCAAACCTTAC

**ACGCGT**ACGCGGCCGCTCGAGCAGAACTCATCTCAGAAGAGGATCTGGCAGCAAATGATATCTGGATT  
 ACAAGGATGACGACGATAAGGTTTAA

**Protein Sequence:**

>RC222915 representing NM\_001025077  
 Red=Cloning site Green=Tags(s)

MRCPKSAVTMRNEELLSSNGTANKMNGALDHSQDPDAIKMFVGGIIPRSWSEKELKELFEPYGAUVYQIN  
 VLRDRSQNPPQSKGCCFVTFYTRKAALAEQNALHNIKTLPGMHHPIQMKPADSEKSNAVEDRKLFIGMVS  
 KKCENDIRVMFSPFGQIEECRILRGPDLRSGCAFVTFSTRAMAQNAIKAMHQSQTMEGCSSPIVVKFA  
 DTQKDKEQRRLQQLAQQMQLNTATWGNLTGLGGLTPQYLALLQQATSSSNLGAFGSIIQQMAGMNALQL  
 QNLATLAAAAAAQTSATSTNANPLSTSSALGALTSPVAASTPNSTAGAAMNSL TSLGTLQGLAGATVG  
 LNNINALAGMAALNGGLGATGLTNGTAGTMDALTQAYSIIQQYAAAAALPTLYSQSLLQQQSAAGSQKEGP  
 EGANLFIYHLPQEFQDQDILQMFMPFGNVI SAKVFIKQTNLSKCFGFVSYDNPVSAQAAIQAMNGFQIG  
 MKRLKVQLKRSKNDKPY

**TRTRPLEQKLI**SEEDLAANDILDYKDDDDKV

**Chromatograms:**

[https://cdn.origene.com/chromatograms/mk8064\\_b09.zip](https://cdn.origene.com/chromatograms/mk8064_b09.zip)

**Restriction Sites:**

Sgfl-Mlul

**Cloning Scheme:**


**ACCN:** NM\_001025077

**ORF Size:** 1524 bp

**OTI Disclaimer:** The molecular sequence of this clone aligns with the gene accession number as a point of reference only. However, individual transcript sequences of the same gene can differ through naturally occurring variations (e.g. polymorphisms), each with its own valid existence. This clone is substantially in agreement with the reference, but a complete review of all prevailing variants is recommended prior to use. [More info](#)

**OTI Annotation:** This clone was engineered to express the complete ORF with an expression tag. Expression varies depending on the nature of the gene.

**Components:** The ORF clone is ion-exchange column purified and shipped in a 2D barcoded Matrix tube containing 10ug of transfection-ready, dried plasmid DNA (reconstitute with 100 ul of water).

**Reconstitution Method:**

1. Centrifuge at 5,000xg for 5min.
2. Carefully open the tube and add 100ul of sterile water to dissolve the DNA.
3. Close the tube and incubate for 10 minutes at room temperature.
4. Briefly vortex the tube and then do a quick spin (less than 5000xg) to concentrate the liquid at the bottom.
5. Store the suspended plasmid at -20°C. The DNA is stable for at least one year from date of shipping when stored at -20°C.

**RefSeq:** [NM\\_001025077.3](#)

**RefSeq Size:** 9227 bp

**RefSeq ORF:** 1527 bp

**Locus ID:** 10659

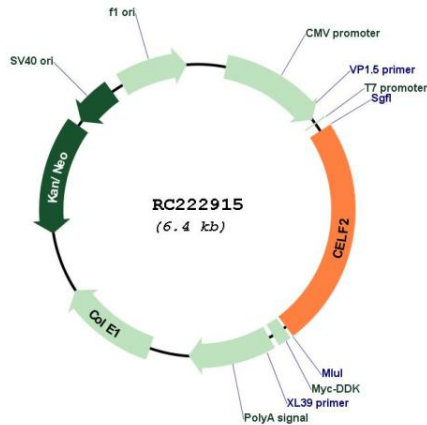
**UniProt ID:** [O95319](#)

**Cytogenetics:** 10p14

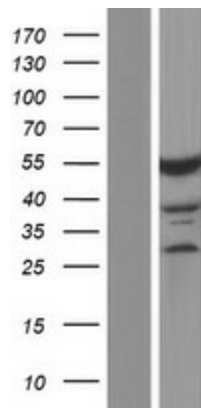
**MW:** 54.1 kDa

**Gene Summary:** Members of the CELF/BRUNOL protein family contain two N-terminal RNA recognition motif (RRM) domains, one C-terminal RRM domain, and a divergent segment of 160-230 aa between the second and third RRM domains. Members of this protein family regulate pre-mRNA alternative splicing and may also be involved in mRNA editing, and translation. Alternative splicing results in multiple transcript variants encoding different isoforms. [provided by RefSeq, Jul 2008]

**Product images:**



Circular map for RC222915



Western blot validation of overexpression lysate (Cat# [LY422579]) using anti-DDK antibody (Cat# [TA50011-100]). Left: Cell lysates from untransfected HEK293T cells; Right: Cell lysates from HEK293T cells transfected with RC222915 using transfection reagent MegaTran 2.0 (Cat# [TT210002]).