

Product datasheet for **RC222905**

DNASE1L2 (NM_001374) Human Tagged ORF Clone

Product data:

Product Type:	Expression Plasmids
Product Name:	DNASE1L2 (NM_001374) Human Tagged ORF Clone
Tag:	Myc-DDK
Symbol:	DNASE1L2
Synonyms:	DNAS1L2
Mammalian Cell Selection:	Neomycin
Vector:	pCMV6-Entry (PS100001)
E. coli Selection:	Kanamycin (25 ug/mL)
ORF Nucleotide Sequence:	>RC222905 representing NM_001374 Red=Cloning site Blue=ORF Green=Tags(s)

TTTTGTAATACGACTCACTATAGGGCGGCCGGAATTCGTCGACTGGATCCGGTACCGAGGAGATCTGCC
GCC**CGATCGCC**

ATGGGCGGGCCCCGGCTCTGCTGGCCGCACTCTGGGCGCTGGAAGCCGCCGGGACCGCCGCGTTCGCA
TCGGAGCCTTCAACATTCAGAGCTTCGGTGACAGCAAAGTGTCCGACCCCGCTTGCAGCAGCATCATCGC
GAAGATCCTGGCTGGCTATGACCTCGCGCTGGTGCAGGAGGTGCGAGACCCAGACCTCAGCGCCGTGTC
GCGCTCATGGAGCAGATCAACAGCGTGTCCGAGCAGGAGTACAGCTTTGTGAGCAGCCAGCCCTGGCC
GGGACCAGTACAAGGAGATGTACCTGTTCTGTACAGAAAGACGCGGTGTCGGTCTGGACACCTACCT
GTACCCAGACCCCGAGGACGTCTTCAGCCGCGAGCCCTTCGTGGTCAAGTTCTCGGCCCCCGGCACCGGT
GAGCGGGCCCCCGCCCTCCCTCCCGCCGAGCTCTGACGCCCCACCCCTTCCCGCAGCAGCACAGAACC
TGGTGCTGATCCCGCTGCACGCGCGCCGCATCAAGCCGTGGCGGAGATCGACGCGCTCTACGACGTGTA
CCTGGACGTGATCGACAAGTGGGACCCGACGACATGCTGTTCTGGGCGACTTCAACGCCGACTGCAGC
TATGTGCGGGCGCAGGACTGGGCCGCCATCCGTCTGAGGAGCAGTGAGGTCTTCAAGTGGCTCATCCCTG
ACAGCGCCGACACCAGGTGGGCAACTCAGACTGCGCCTACGACCGCATTGTGGCCTGTGGCGCCCGCCT
GCGCCGGAGCCTGAAGCCCCAGTCGGCCACCGTGCACGACTTCCAGGAGGAATTCGGCCTGGACAGACT
CAGGCTTTGCCATCAGCGACCACTTCCAGTGGAGGTGACCCTCAAGTCCACCGA

ACGCGTACGCGGGCCGCTCGAGCAGAAACTCATCTCAGAAGAGGATCTGGCAGCAAATGATATCCTGGATT
ACAAGGATGACGACGATAAGGTTTAA



[View online »](#)

Reconstitution Method:

1. Centrifuge at 5,000xg for 5min.
2. Carefully open the tube and add 100ul of sterile water to dissolve the DNA.
3. Close the tube and incubate for 10 minutes at room temperature.
4. Briefly vortex the tube and then do a quick spin (less than 5000xg) to concentrate the liquid at the bottom.
5. Store the suspended plasmid at -20°C. The DNA is stable for at least one year from date of shipping when stored at -20°C.

RefSeq: [NM_001374.3](#)

RefSeq Size: 1365 bp

RefSeq ORF: 900 bp

Locus ID: 1775

UniProt ID: [Q92874](#)

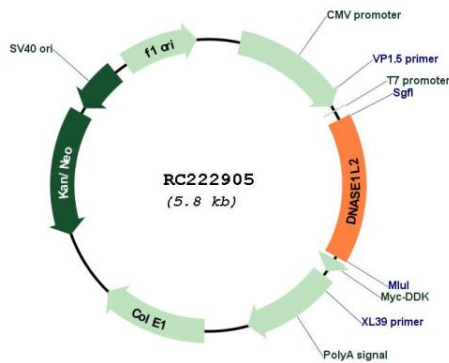
Cytogenetics: 16p13.3

Protein Families: Secreted Protein

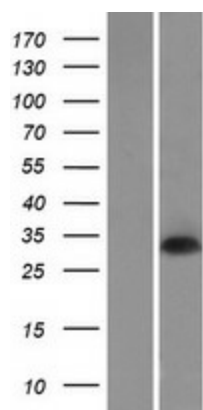
MW: 32.7 kDa

Gene Summary: Divalent cation-dependent acid DNA endonuclease involved in the breakdown of the nucleus during corneocyte formation of epidermal keratinocytes. May play an immune role by eliminating harmful DNA released into the extracellular environment by damaged epidermal cells.[UniProtKB/Swiss-Prot Function]

Product images:



Circular map for RC222905



Western blot validation of overexpression lysate (Cat# [LY419981]) using anti-DDK antibody (Cat# [TA50011-100]). Left: Cell lysates from untransfected HEK293T cells; Right: Cell lysates from HEK293T cells transfected with RC222905 using transfection reagent MegaTran 2.0 (Cat# [TT210002]).