

Product datasheet for **RC222904**

RBFOX2 (NM_014309) Human Tagged ORF Clone

Product data:

Product Type:	Expression Plasmids
Product Name:	RBFOX2 (NM_014309) Human Tagged ORF Clone
Tag:	Myc-DDK
Symbol:	RBFOX2
Synonyms:	dj106l20.3; Fox-2; FOX2; fxb; HNRBP2; HRNBP2; RBM9; RTA
Mammalian Cell Selection:	Neomycin
Vector:	pCMV6-Entry (PS100001)
E. coli Selection:	Kanamycin (25 ug/mL)
ORF Nucleotide Sequence:	>RC222904 representing NM_014309 Red=Cloning site Blue=ORF Green=Tags(s)

TTTTGTAATACGACTCACTATAGGGCGCCGGGAATTCGTCGACTGGATCCGGTACCGAGGAGATCTGCC
GCC**CGATCGCC**

ATGGAGAAAAAGAAAATGGTAACTCAGGGTAACCGAGGAGCCGACAACAACCTCTGACGCAATGGTTCAGC
CTTTTACTACCATCCATTTCCACCACCTCCGAGAATGGAATCCACAGAGTATGGGGTGCCACACAC
TCAAGACTATGCCGGCCAGACCGGTGAGCATAACCTGACACTCTACGGAAGTACGCAAGCCACGGGGAG
CAGAGCAGCAACTCACCCAGCACACAAAATGGATCTTTACGCAGACAGAAGGTGGAGCACAGACAGACG
GCCAGCAGTCACAGACACAAAGTAGTAAAATTCAGAGAGTAAATCTACCCGAAACGGTGCATGTCTC
TAATATTCCTTTCCGCTTCCGGGACCCTGACCTCCGGCAGATGTTTGGGCAGTTTGGCAAAATCCTAGAT
GTAGAAAATAATCTTTAATGAACGTGGCTCTAAGGGATTCCGGTTCGTAACCTTCGAGAATAGTGCTGATG
CAGACAGGGCCAGGGAGAAATTACACGGCACCGTGGTAGAGGGCCGTAATCGAGGTGAATAATGCTAC
AGCACGTGTAATGACCAATAAGAAGATGGTCACACCATATGCAAAATGGTTGGAAATTAAGCCAGTAGTT
GGAGCTGTATATGGTCCGGAGTTATATGCAGCATCCAGCTTTCAAGCAGATGTGTCCCTAGGCAATGATG
CAGCAGTGCCCTATCAGGAAGAGGGGGTATCAACACTTACATTCCTTTAATCATTCTGGCTTCCCTTA
CCCTACTGCAGCCACCACGGCAGCCGCTTTCAGAGGAGCCCATTTGAGGGGCAGAGGGCCGACAGTATAT
GGTGCAGTCCGAGCGGTACCTCCAACAGCCATCCCCGCTATCCAGGGTGGATATGACGCTACAGATA
TGACAGCCTGCTACTGCAACCGCAGCCACCGCTGCTGCAGCCGCTGCAGCCGCTTACAGTGACGGTTAT
GGCAGGGTGTACACAGCCGACCCCTACCATGCCCTTGCCCTGCCGCTAGCTATGGAGTTGGCGCTGTGG
CGAGTTTATACCGAGGTGGCTACAGCCGATTTGCCCTACTGAAGTGACG

ACGCGTACGCGGCCGCTCGAGCAGAAACTCATCTCAGAAGAGGATCTGGCAGCAATGATATCCTGGATT
ACAAGGATGACGACGATAAGGTTTAA



[View online »](#)

Protein Sequence: >RC222904 representing NM_014309
 Red=Cloning site Green=Tags(s)

MEKKKMVTQGNQEPTTTPDAMVQPFTTIPFPPPPQNGIPTEYGVPHQTQDYAGQTGEHNL TLYGSTQAHGE
 QSSNSPSTQNGSLTQTEGGAQTDGQSQTSSENSESKSTPKRLHVSNI PFRFRDPDLRQMFGQFGKILD
 VEIIFNERGSKGFGFVTFENSADADRAREKLHGTVVEGRKIEVNNATARVMTNKKMVTPTYANGWKLSPVV
 GAVYGPPELYAASSFQADVSLGNDAAVPLSGRGGINTYIPLIIPGFYPTAATTA AAFRGAHLRGRGRTVY
 GAVRAVPPTAIPAYPGVDMQPTDMHSLLLQPQPPLLQLPLTVTMAGCTQPTPTMPLPLPLAMELALW
 RVYTEVATADLPTEVT

TRTRPLEQKLISEEDLAANDILDYKDDDDKV

Restriction Sites:

SgfI-MluI

Cloning Scheme:

Cloning sites used for ORF Shuttling:



* The last codon before the Stop codon of the ORF

ACCN: NM_014309

ORF Size: 1101 bp

OTI Disclaimer: The molecular sequence of this clone aligns with the gene accession number as a point of reference only. However, individual transcript sequences of the same gene can differ through naturally occurring variations (e.g. polymorphisms), each with its own valid existence. This clone is substantially in agreement with the reference, but a complete review of all prevailing variants is recommended prior to use. [More info](#)

OTI Annotation: This clone was engineered to express the complete ORF with an expression tag. Expression varies depending on the nature of the gene.

Components: The ORF clone is ion-exchange column purified and shipped in a 2D barcoded Matrix tube containing 10ug of transfection-ready, dried plasmid DNA (reconstitute with 100 ul of water).

Reconstitution Method:

1. Centrifuge at 5,000xg for 5min.
2. Carefully open the tube and add 100ul of sterile water to dissolve the DNA.
3. Close the tube and incubate for 10 minutes at room temperature.
4. Briefly vortex the tube and then do a quick spin (less than 5000xg) to concentrate the liquid at the bottom.
5. Store the suspended plasmid at -20°C. The DNA is stable for at least one year from date of shipping when stored at -20°C.

RefSeq: [NM_014309.4](#)

RefSeq Size: 1876 bp

RefSeq ORF: 1104 bp

Locus ID: 23543

UniProt ID: [O43251](#)

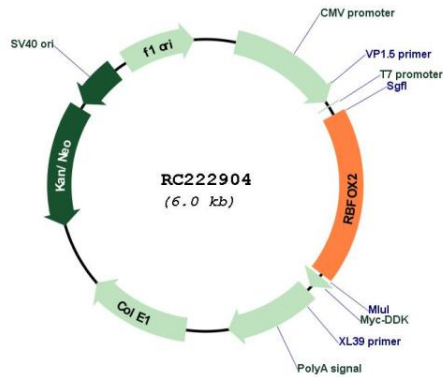
Cytogenetics: 22q12.3

Domains: RRM

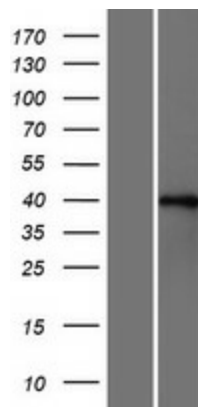
Protein Families: Druggable Genome, Transcription Factors

MW: 39.3 kDa

Gene Summary: This gene is one of several human genes similar to the *C. elegans* gene Fox-1. This gene encodes an RNA binding protein that is thought to be a key regulator of alternative exon splicing in the nervous system and other cell types. The protein binds to a conserved UGCAUG element found downstream of many alternatively spliced exons and promotes inclusion of the alternative exon in mature transcripts. The protein also interacts with the estrogen receptor 1 transcription factor and regulates estrogen receptor 1 transcriptional activity. Multiple transcript variants encoding different isoforms have been found for this gene. [provided by RefSeq, Jul 2008]

Product images:


Circular map for RC222904



Western blot validation of overexpression lysate (Cat# [LY415365]) using anti-DDK antibody (Cat# [TA50011-100]). Left: Cell lysates from untransfected HEK293T cells; Right: Cell lysates from HEK293T cells transfected with RC222904 using transfection reagent MegaTran 2.0 (Cat# [TT210002]).