

## Product datasheet for **RC222899**

### SLC22A7 (NM\_153320) Human Tagged ORF Clone

#### Product data:

Product Type:	Expression Plasmids
Product Name:	SLC22A7 (NM_153320) Human Tagged ORF Clone
Tag:	Myc-DDK
Symbol:	SLC22A7
Synonyms:	hOAT11; NLT; OAT2
Mammalian Cell Selection:	Neomycin
Vector:	pCMV6-Entry (PS100001)
E. coli Selection:	Kanamycin (25 ug/mL)



[View online »](#)

**ORF Nucleotide Sequence:**

>RC222899 ORF sequence  
 Red=Cloning site Blue=ORF Green=Tags(s)

TTTTGTAATACGACTCACTATAGGGCGGCCGGAATTCGTCGACTGGATCCGGTACCGAGGAGATCTGCC  
 GCC**CGGATCGCC**

ATGGGCTTTGAGGAGCTGCTGGAGCAGGTGGGCGCTTTGGGCCCTTCCAACCTGCGGAATGTGGCACTGC  
 TGGCCCTGCCCGAGTGCTGCTACCACTGCACTTCCTCCTGCCATCTTCTGGCTGCCGTGCCCTGCCCA  
 CCGATGTGCCCTGCCGGGTGCCCTGCCAACTCAGCCATCAGGATGTGTGGCTGGAGGCCCATCTTCCC  
 CGGGAGCCTGATGGCACGCTCAGCTCCTGCCTCCGCTTTGCCTATCCCCAGGCTCTCCCCAACACCAGT  
 TGGGGGAAGAAAGGCAGAGCCGTGGGGAGCTGGAGGATGAACCTGCCACAGTGCCTGCTCTCAGGGCTG  
 GGAGTACGACCACTCAGAATTCTCTCTACCATTGCAACTGAGTCCCAGTGGGATCTGGTGTGTAGCAG  
 AAAGTCTGAACAGAGCTGCGTCCACTTTCTTCTCGCCGGTGTGCTGGTGGGGCTGTGGCCTTTGGAT  
 ATCTGTCCGACAGGTTTGGGCGCGCGTCTGCTGCTGGTAGCCTACGTGAGTACCCTGGTGTGGGCT  
 GGCATCTGCAGCCTCCGTCAGCTATGTAATGTTTCCCATCACCCGCACCCTTACTGGCTCAGCCCTGGCT  
 GGTTTTACCATCATCGTATGCCACTGGAGCTGGAGTGGCTGGATGTGGAGCACCGCACCGTGGCTGGAG  
 TCCTGAGCAGCACCTTCTGGACAGGGGGCGTGATGCTGCTGGCACTGGTTGGGTACCTGATACGGGACTG  
 GCGATGGCTTCTGCTAGCTGTACCCCTGCCTTGTGCCCCAGGCATCCTCAGCCTCTGGTGGGTGCCTGAG  
 TCTGCACGCTGGCTTCTGACCCAAGGCCATGTAAAGAGGGCCACAGGTAAGTCTGCTCCACTGTGCCAGGC  
 TCAATGGGCGGCCAGTGTGTGAGGACAGCTTACGACAGGAGGCTGTGAGCAAAGTGGCCGCCGGGAACG  
 GGTGGTCCGAAGACCTTCATACCTAGACCTGTTCCGCACACCACGGCTCCGACACATCTCACTGTGCTGC  
 GTGGTGGTGTGGTTCGGAGTGAACCTCTCTCTATTACGGCTGAGTCTGGATGTGTGGGGCTGGGCTGA  
 ACGTGTACCAGACAGCTGTTGTTTCGGGGCTGTGGAAGTGCCTCCAAGCTGCTGGTCTACTTGTGGT  
 GCGCTACGCAGGACGCCCTCACGCAAGCCGGGACACTGCTGGGACAGGCCCTGGCGTTTCGGCACTAGA  
 CTGCTAGTGTCTCCGATATGAAGTCTGGAGCACTGTCCTGGCAGTGTGGGAAAGCTTTTTCTGAAG  
 CTGCCTTACCCTGCCTACCTGTTCACTTACAGAGTTGTACCCTACGGTGTGCTCAGACAGACAGGGATGGG  
 GCTGACTGCACTGGTGGGCGGCTGGGGGGCTCTTTGGCCCCACTGGCGCCTTGTGGATGGAGTGTGG  
 CTGCTACTGCCAAAGCTTACTTATGGGGGGATCGCCCTGCTGGCTGCCGGCACCGCCCTCTGCTGCCAG  
 AGACGAGGCAGGCACAGCTGCCAGAGACCATCCAGGACGTGGAGAGAAAGAGTCCCCAACCACTTCA  
 GGAGGAAGAGATGCCCATGAAGCAGTCCAGAAC

**ACGCGT**ACGCGGCCGCTCGAGCAGAAACTCATCTCAGAAGAGGATCTGGCAGCAAATGATATCCTGGATT  
 ACAAGGATGACGACGATAAGGTTTAA

**Protein Sequence:**

>RC222899 protein sequence  
 Red=Cloning site Green=Tags(s)

MGFEELLEQVGGFQPLRNVALLALPRVLLPLHFLPIFLAAVPAHRCALPGAPANFSHQDVWLEAHL  
 REPDGTLSSCLRFAYPQALPNTTLGEERQSRGELEDEPATVPCSQGWYDHSEFSSTIATESQWDLVCEQ  
 KGLNRAASTFFFAGVLVGAVAFGYLSDRFRRRLLLVAYVSTLVLGLASAASVSYVMFAITRTLTSALA  
 GFTIIVMPLELEWLDVEHRTVAGVLSSTFWTGGVMLLALVGYLIRDWRWLLAVTLPCAPGILSLWWVPE  
 SARWLLTQGHVKEAHRYLLHCARLNGRPVCEDSFSQEAVSKVAAGERVRRPSYLDLFRTPRLRHISLCC  
 VVWFVNFVSYGLSLDVSGLGLNVYQTQLLFGAVELPSKLLVYLSVRYAGRRLTQAGTLLGTALAFGTR  
 LLVSSDMKSWSTVLAVMGKAFSEAAFTTAYLFTSELYPTVLRQTGMGLTALVGRLLGSLAPLAALLDGVW  
 LSLPKLTYGGIALLAAGTALLLPETRAQLPETIQDVERKSAPTSLQEEEMPMKQVQN

**TR**TRPLEQKLISEEDLAANDILDYKDDDDKV

**Chromatograms:**

[https://cdn.origene.com/chromatograms/mk6335\\_f07.zip](https://cdn.origene.com/chromatograms/mk6335_f07.zip)

**Restriction Sites:**

Sgfl-Mlul

Cloning Scheme:



ACCN: NM\_153320

ORF Size: 1644 bp

OTI Disclaimer: The molecular sequence of this clone aligns with the gene accession number as a point of reference only. However, individual transcript sequences of the same gene can differ through naturally occurring variations (e.g. polymorphisms), each with its own valid existence. This clone is substantially in agreement with the reference, but a complete review of all prevailing variants is recommended prior to use. [More info](#)

OTI Annotation: This clone was engineered to express the complete ORF with an expression tag. Expression varies depending on the nature of the gene.

Components: The ORF clone is ion-exchange column purified and shipped in a 2D barcoded Matrix tube containing 10ug of transfection-ready, dried plasmid DNA (reconstitute with 100 ul of water).

- Reconstitution Method:
1. Centrifuge at 5,000xg for 5min.
  2. Carefully open the tube and add 100ul of sterile water to dissolve the DNA.
  3. Close the tube and incubate for 10 minutes at room temperature.
  4. Briefly vortex the tube and then do a quick spin (less than 5000xg) to concentrate the liquid at the bottom.
  5. Store the suspended plasmid at -20°C. The DNA is stable for at least one year from date of shipping when stored at -20°C.

RefSeq: [NM\\_153320.2](#), [NP\\_696961.2](#)

RefSeq Size: 2559 bp

RefSeq ORF: 1647 bp

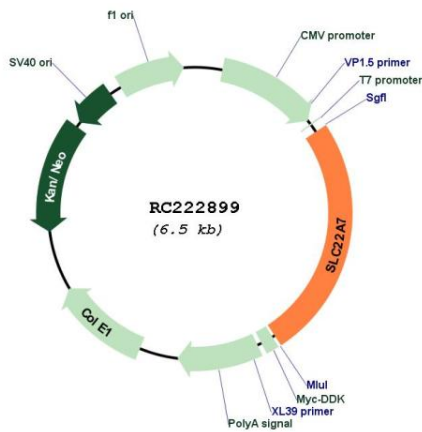
Locus ID: 10864

UniProt ID: [Q9Y694](#)

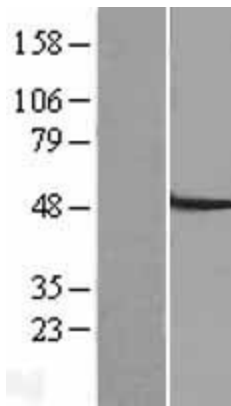
**Cytogenetics:** 6p21.1  
**Domains:** sugar\_tr  
**Protein Families:** Druggable Genome, Transmembrane  
**MW:** 60 kDa

**Gene Summary:** The protein encoded by this gene is involved in the sodium-independent transport and excretion of organic anions, some of which are potentially toxic. The encoded protein is an integral membrane protein and appears to be localized to the basolateral membrane of the kidney. Alternatively spliced transcript variants encoding different isoforms have been described. [provided by RefSeq, Jul 2008]

**Product images:**



Circular map for RC222899



Western blot validation of overexpression lysate (Cat# [LY407107]) using anti-DDK antibody (Cat# [TA50011-100]). Left: Cell lysates from untransfected HEK293T cells; Right: Cell lysates from HEK293T cells transfected with RC222899 using transfection reagent MegaTran 2.0 (Cat# [TT210002]).