

Product datasheet for RC222893

ATP11C (NM_173694) Human Tagged ORF Clone

Product data:

Product Type:	Expression Plasmids
Product Name:	ATP11C (NM_173694) Human Tagged ORF Clone
Tag:	Myc-DDK
Symbol:	ATP11C
Synonyms:	ATPIG; ATPIQ; HACXL
Mammalian Cell Selection:	Neomycin
Vector:	pCMV6-Entry (PS100001)
E. coli Selection:	Kanamycin (25 ug/mL)
ORF Nucleotide Sequence:	>RC222893 representing NM_173694 Red=Cloning site Blue=ORF Green=Tags(s)

TTTTGTAATACGACTCACTATAGGGCGGCCGGAATTCGTCGACTGGATCCGGTACCGAGGAGATCTGCC
GCC**CGATCGCC**

ATGCAGATGGTCCCATCTCTCCCTCCAGCCTCTGAGTGTGCTGGAGAAGAGAAACGAGTTGGCACACGCA
CAGTGTGGTGGCAATCATCCAGTTTCGGAAACAGAAGCTTACATTGCACAAAGATTTGTGATAATAG
AATAGTCTCATCTAAGTATACACTTTGGAATTTCTCCAAAGAATCTGTTTGAACAGTTTAGAAGAATT
GCAAAATTTTATTTCTCATAATCTTCTTGTACAGGTACAGTAGACACACCACTAGCCCAGTTACCA
GTGGACTTCCACTTTTCTTTGTTATAACTGTTACAGCCATCAAGCAGGGATATGAGGATTGGCTGAGACA
CAGAGCTGACAAATGAAGTCAACAAAAGCACTGTTTACATTATTGAAAATGCAAAGCGAGTGAGAAAAGAA
AGTGAAAAAATCAAGGTTGGTGTAGTAGAAGTACAGGCAGATGAAACCTTTCCCTGTGATCTTATTC
TTCTATCATCTTGCACTGATGGAACCTGTTATGTCACACTACAGCCAGTCTTGTGGGGAATCCAATTG
CAAGACACATTATGCAGTACGTGATACCATGCACTGTGTACAGCAGAATCCATCGATACCTCCGAGCA
GCAATTGAATGTGAACAGCCTCAACCTGACCTCTACAAATTTGTTGGGCGAATCAATATCTACAGTAATA
GTCTTGAGGCTGTTGCCAGGTCTTTGGGACCTGAAAATCTTGTGCTGAAAGGAGCTACGTAATAAATAC
CGAGAAGATATATGGAGTTGCTGTTTACTGGAATGGAACCAAAATGGCTTTGAACTACCAAGGGAAA
TCTCAGAAACGTTCTGCTGTTGAAAAATCTAATGCTTTCTGATTGTATTTTATTTTACTGTA
CCAAAGCTGCAGTATGCACTACTCTAAAGTATGTTTGGCAAAGTACCCCATACAATGATGAACCTTGGA
TAACCAAAAGACTCAGAAAGAGCGAGAGACCTGAAGGTTTTAAAAATGTTCAACGACTTCTATCATT
ATGTTTCTATTCACTTTATCATTCTGTCTCCATGTACGTACAGTAGAAATGCAGAAATCTTGGGCT
CCTTCTCATCTCATGGGATAAGGACTTTTATGATGAAGAAATTAATGAAGGAGCCCTGGTTAACACATC
AGACCTTAATGAAGAATTGGTCAGGTGGATTATGATTTACAGATAAGACTGGAACACTCACTGAAAAC
AGCATGGAATTCATTGAATGCTGCATAGATGGCCACAAATATAAAGGTGTAACCTCAAGAGGTTGATGGAT
TATCTCAAACCTGATGGAACCTTAAACATATTTGACAAAGTAGATAAGAATCGAGAAGAGCTGTTTCTACG
TGCCCTGTGTTTATGTCATACTGTAGAAATCAAAACAAACGATGCTGTTGATGGAGCTACAGAATCAGCT



[View online >](#)

GAATTAACCTATATCTCCTCTTACCAGATGAAATAGCTTTGGTAAAAGGAGCTAAAAGGTACGGGTTCA
CATTTTTAGGAAATCGAAATGGATATATGAGAGTAGAGAACCAAGAAAAGAAATAGAAGAATATGAACT
TCTTCACACCTTAAACTTTGATGCTGTCCGGCGACGTATGAGTGTAAATTGTGAAGACTCAAGAAGGAGAC
ATACTTCTCTTTTGTAAAGGAGCAGACTCGGCAGTTTTTCCCAGAGTGCAAAATCATGAAATTGAGTTAA
CTAAAGTCCATGTGGAACGTAATGCAATGGATGGGTATCGGACACTCTGTGTAGCCTTCAAAGAAATTGC
TCCAGATGATTATGAAAGAATTAACAGACAGCTCATAGAGGCAAAAATGGCCTTACAAGACAGAGAAGAA
AAAATGGAAAAAGTTTTTCGATGATATTGAGACAAACATGAATTTAATTGGAGCCACTGCAGTTGAAGACA
AGCTACAAGATCAAGCTGCAGAGACCATTGAAGCTCTGCATGCAGCAGGCCTGAAAGTCTGGGTGCTCAC
TGGGGACAAGATGGAGACAGCTAAATCCACATGCTATGCCTGCCGCTTTTCCAGACCAACTGAGCTC
TTAGAACTAACCACAAAAACCATTGAAGAAAGTAAAAGGAAAGAAGATCGATTACATGAATTATTGATAG
AATATCGCAAGAAATTGCTGCATGAGTTTCTAAAAGTACTAGAAGCTTTAAAAAAGCATGGACAGAACA
TCAGGAATATGGATTAATCATAGATGGCTCCACATTGCTACTCATACTAAATTCTAGTCAAGACTTAGT
TCAAACAATTACAAAAGCATTTCCTACAATATGTATGAAGTGTACTGCAGTGTCTGTGTGGATGG
CACCATTACAGAAAGCCAGATTGTCAGAAATGGTGAAGAATTTAAAGGCAGCCCAATAACTCTGTGAT
AGGTGATGGTGCCAAATGATGTTAGTATGATCTTGAATCCCATGTGGGAATAGGTATTAAGGCAAAGAA
GGTCGCCAAGCAGCTAGGAATAGCGATTATTCTGTTCCAAAGTTTAAACACTTAAAGAAACTGCTGTTGG
CTCATGGACATCTATATTATGTGAGAATAGCACACCTTGTACGTAAGTCTTCTATAAGAACCTTTGTT
CATTTTTGCCACAGTTTTTGTACCAGTTCTTCTGTGGATTCTCACACAGCCACTGTATGATGCTGCTTAC
CTTACAATGTACAATATCTGCTTACATCCTTGCCCATCTGGCCTATAGTCTACTGGAACAGCACATCA
ACATTGACACTCTGACCTCAGATCCCCGATTGTATATGAAAATTTCTGGCAATGCCATGCTACAGTTGGG
CCCCTTCTATATTGGACATTTCTGGCTGCCTTGAAGGGACAGTGTCTTCTTTGGGACTTACTTTCTT
TTTCAGACTGCATCCCTAGAAGAAAATGGAAAGGTATACGGAAACTGGACTTTTGAACCATTGTTTTTA
CAGTCTTAGTATCACTGTAACCCTGAAGCTTGCCTTGGATACCCGATTCTGGAGTGGATAAATCACTT
TGTGATTTGGGGTCTTTAGCCTTCTATGATTTTTTCTCATTCTTCTGGGAGGAATTTTGGCCTTTT
CTCAAGCAACAGAGAATGTATTTGTATTTGCCAAATGCTGTCTTCTGTATCCACATGGTTGGCTATAA
TTCTTCTAATATTTATCAGCCTGTTCCCTGAGATTCTTCTGATAGTATTAAGAATGTAAGAAGAAGAAG
TGCCAGGAGAAATCTGAGCTGTAGAAGGCATCTGACTCATTATCCGCCAGACCTTCAGTCAGACCTCTT
CTTTTACGAACATTCTCAGACGAATCTAATGTATTG

ACGCGTACGCGGCCGCTCGAGCAGAACTCATCTCAGAAGAGGATCTGGCAGCAATGATATCTGGATT
ACAAGGATGACGACGATAAGGTTTAA

Protein Sequence: >RC222893 representing NM_173694
Red=Cloning site Green=Tags(s)

MQMVPSLPPASECAGEEKRVGTRTVFVGNHPVSETEAYIAQRFCNRIVSSKYTLWNFLPKNLEQFRRI
 ANFYFLIIFLVQVTVDPTSPVTSGLPLFFVITVTAIKQGYEDWLRHRADNEVNKSTVYIENAKRVRKE
 SEKIKVGDVVEVQADETFPCDLILLSCTTDGTCYVTTASLDGESNCKTHYAVRDTIALCTAESIDTLRA
 AIECEQPQPDLYKFVGRINIYNSLEAVARSLGPENLLKGGATLKNTEKIYGVAVYTGMEKMLNYQ GK
 SQKRSAVEKSINAFLLIVYLFILLTKAAVCTTLKYVWQSTPYNDEPWYNQKTQKERETLKVLMFTDFLSF
 MYLNFNFIIPVSMYVTVMQKFLGSFFISWDKDFYDEEINEGALVNTSDLNEELGQVDYVFTDKTGLTEN
 SMEFIECCIDGHKYKGVTEVDGLSQTGDGLTYFDKVDKNREELFLRALCLCHTVEIKTNDVAVDGATESA
 ELTYISSSPDEIALVKGAKRYGFTFLGNRNGYMRVENQRKEIEEYELLHTLNFDVRRRMSVIVKTQEGD
 ILLFCKGADSAVFRVQNHIEELTKVHVERNAMDGYRTL CVAFKEIAPDDYERINRQLIEAKMALQDREE
 KMEKVFDDIETNMNLIGATAVEDKLDQAAETIEALHAAGLKVVLTGDKMETAKSTCYACRLFQTNTEL
 LELTTKTIIEESERKEDRLHELLIEYRKLLHEFPKSTRSFKKAWTEHQEYGLIIDGSTLSLILNSSQDSS
 SNNYKSIFLQICMKCTAVLCCRMAPLQKAQIVRMVKNLKGSPITLSIGDGANDVSMILESHVIGIGKGE
 GRQAARNSDYSVPKFKHLKLLLAHGHLYYVRIAHLVQYFFYKNLCFILPQFLYQFFCGFSQQPLYDAAY
 LTMYNICFTSLPILAYSILLEQHINIDTLTSDPRLYMKISGNAMLQLGPFLYWTFLLAAFEGTVFFFGTYFL
 FQTASLEENGKYYGNWTFGTIVFTVLVFTVTLKALDTRFWTWINHFVIWGLAFYVFFSFFWGGIWPFL
 LKQQRMYFVFAQMLSSVSTWLAIIILLIFISLFP EILLIVLKNVRRRSARRNLSRRASDSL SARPSVRPL
 LLRTFSDES NVL

TRTRPLEQKLISEEDLAANDILDYKDDDDKV

Chromatograms: https://cdn.origene.com/chromatograms/mk6610_g01.zip

Restriction Sites: SgfI-MluI

Cloning Scheme:

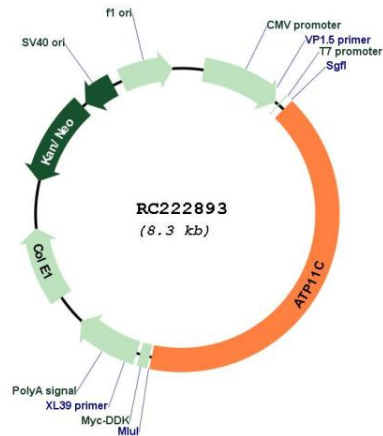


ACCN: NM_173694

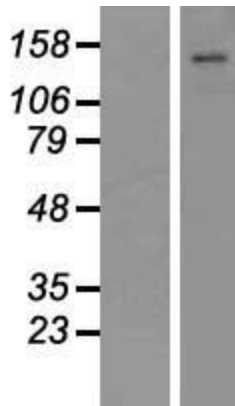
ORF Size: 3396 bp

OTI Disclaimer:	The molecular sequence of this clone aligns with the gene accession number as a point of reference only. However, individual transcript sequences of the same gene can differ through naturally occurring variations (e.g. polymorphisms), each with its own valid existence. This clone is substantially in agreement with the reference, but a complete review of all prevailing variants is recommended prior to use. More info
OTI Annotation:	This clone was engineered to express the complete ORF with an expression tag. Expression varies depending on the nature of the gene.
Components:	The ORF clone is ion-exchange column purified and shipped in a 2D barcoded Matrix tube containing 10ug of transfection-ready, dried plasmid DNA (reconstitute with 100 ul of water).
Reconstitution Method:	<ol style="list-style-type: none">1. Centrifuge at 5,000xg for 5min.2. Carefully open the tube and add 100ul of sterile water to dissolve the DNA.3. Close the tube and incubate for 10 minutes at room temperature.4. Briefly vortex the tube and then do a quick spin (less than 5000xg) to concentrate the liquid at the bottom.5. Store the suspended plasmid at -20°C. The DNA is stable for at least one year from date of shipping when stored at -20°C.
Note:	Plasmids are not sterile. For experiments where strict sterility is required, filtration with 0.22um filter is required.
RefSeq:	NM_173694.4 , NP_775965.2
RefSeq Size:	6135 bp
RefSeq ORF:	3399 bp
Locus ID:	286410
UniProt ID:	Q8NB49
Cytogenetics:	Xq27.1
Protein Families:	Transmembrane
MW:	129.4 kDa
Gene Summary:	Catalytic component of a P4-ATPase flippase complex which catalyzes the hydrolysis of ATP coupled to the transport of aminophospholipids from the outer to the inner leaflet of various membranes and ensures the maintenance of asymmetric distribution of phospholipids. In the cell membrane of erythrocytes, it is required to maintain phosphatidylserine (PS) in the inner leaflet preventing its exposure on the surface. This asymmetric distribution is critical for the survival of erythrocytes in circulation since externalized PS is a phagocytic signal for splenic macrophages (PubMed:26944472). Phospholipid translocation seems also to be implicated in vesicle formation and in uptake of lipid signaling molecules (By similarity). Required for B cell differentiation past the pro-B cell stage (By similarity). Seems to mediate PS flipping in pro-B cells (By similarity). May be involved in the transport of cholestatic bile acids (By similarity). [UniProtKB/Swiss-Prot Function]

Product images:



Circular map for RC222893



Western blot validation of overexpression lysate (Cat# [LY406564]) using anti-DDK antibody (Cat# [TA50011-100]). Left: Cell lysates from untransfected HEK293T cells; Right: Cell lysates from HEK293T cells transfected with RC222893 using transfection reagent MegaTran 2.0 (Cat# [TT210002]).