

Product datasheet for **RC222891**

LCMT1 (NM_001032391) Human Tagged ORF Clone

Product data:

Product Type: Expression Plasmids
Product Name: LCMT1 (NM_001032391) Human Tagged ORF Clone
Tag: Myc-DDK
Symbol: LCMT1
Synonyms: CGI-68; LCMT; PPMT1
Mammalian Cell Selection: Neomycin
Vector: pCMV6-Entry (PS100001)
E. coli Selection: Kanamycin (25 ug/mL)
ORF Nucleotide Sequence: >RC222891 representing NM_001032391
Red=Cloning site Blue=ORF Green=Tags(s)

TTTTGTAATACGACTCACTATAGGGCGGCCGGAATTCGTCGACTGGATCCGGTACCGAGGAGATCTGCC
GCC**CGCATCGCC**

ATGGCCACTAGGCAGAGGGAATCCTCTATCACCTCCTGCTGTTCCACCTCGAGCTGCGACGCAGACGACG
AGGGCGTGCGCGGCACCTGCGAAGATGCTTCCCTGTGCAAGAGGTTTGCAGTAAGCATTGGCTACTGGCA
TGACCCTTACATACAGCACTTTGTGAGACTGTCTAAAGAGAGGAAAGCCCTGAAATCAACAGAGGATAT
TTTGCTCGAGTCCATGGTGTGAGTGTCTATAAAGGCATTTCTACGGAAGACAGAATGTCATTGTCAA
TTGTCAACCTTGGGCAGGCATGGATACCCTTCTGGAGATTAAGGATGAAGATCTTCTCCCAAGTAA
ATATTTGAGGTTGACTTCCAATGATTGTCCAGAGAAAGCTGCACAGTATCAAATTGCCAACACTCCTG
ATAGCTGAATGTGTGCTGGTTTACATGACTCCAGAGCAGTCCGCAACCTCCTGAAGTGGGCAGCCAACA
GTTTTGAGAGAGCCATGTTCAAACTACGAACAGGTGAACATGGGTGATCGGTTTGGGCAGATCATGAT
TGAAAACCTGCGGAGACGCCAGTGTGACCTGGCGGGAGTGGAGACCTGCAAGTCATTAGAGTACAGAAA
GAACGGCTCCTGTGCAATGGGTGGGAAACAGCATCGGCCGTGACATGATGGAGTTGTACAACAGGTTAC
CTCGAGCTGAAGTGAAGCAGGATAGAATCACTTGAATCCTGGATGAAATGGAGCTGCTGGAGCAGCTCAT
GCGGCATTACTGCCTTTGCTGGGCAACCAAGGAGGAAATGAGCTTGGCTGAAGGAGATAACTTAT

**ACGCGTACGCGGCCGCTCGAGCAGAACTCATCTCAGAAGAGGATCTGGCAGCAAATGATATCCTGGATT
ACAAGGATGACGACGATAAGGTTTAA**



[View online »](#)

Protein Sequence: >RC222891 representing NM_001032391
Red=Cloning site Green=Tags(s)

MATRQRESSITSCCSTSSCDADDEGVRGTCEDASLCKRFVAVSIGYWHDPYIQHFVRLSKERKAPEINRGY
 FARVHGVSQLIKAFRLKTECHCQIVNLGAGMDTTFWRLKDEDLLPSKYFEVDFPMIVTRKLHSIKLPTLL
 IAECVLVYMTPEQSANLLKWAANSFERAMFINYEQVNMGDRFGQIMIENLRRRQCDLAGVETCKSLESQK
 ERLLSNGWETASAVDMMELYNRLPRAEVSRIESLEFLDEMELEQLMRHYCLCWATKGGNELGLKEITY

TRTRPLEQKLISEEDLAANDILDYKDDDDKV

Chromatograms: https://cdn.origene.com/chromatograms/mk8049_a06.zip

Restriction Sites: SgfI-MluI

Cloning Scheme:



ACCN: NM_001032391

ORF Size: 837 bp

OTI Disclaimer: The molecular sequence of this clone aligns with the gene accession number as a point of reference only. However, individual transcript sequences of the same gene can differ through naturally occurring variations (e.g. polymorphisms), each with its own valid existence. This clone is substantially in agreement with the reference, but a complete review of all prevailing variants is recommended prior to use. [More info](#)

OTI Annotation: This clone was engineered to express the complete ORF with an expression tag. Expression varies depending on the nature of the gene.

Components: The ORF clone is ion-exchange column purified and shipped in a 2D barcoded Matrix tube containing 10ug of transfection-ready, dried plasmid DNA (reconstitute with 100 ul of water).

Reconstitution Method:

1. Centrifuge at 5,000xg for 5min.
2. Carefully open the tube and add 100ul of sterile water to dissolve the DNA.
3. Close the tube and incubate for 10 minutes at room temperature.
4. Briefly vortex the tube and then do a quick spin (less than 5000xg) to concentrate the liquid at the bottom.
5. Store the suspended plasmid at -20°C. The DNA is stable for at least one year from date of shipping when stored at -20°C.

RefSeq: [NM_001032391.2](#)

RefSeq Size: 1209 bp

RefSeq ORF: 840 bp

Locus ID: 51451

UniProt ID: [Q9UIC8](#)

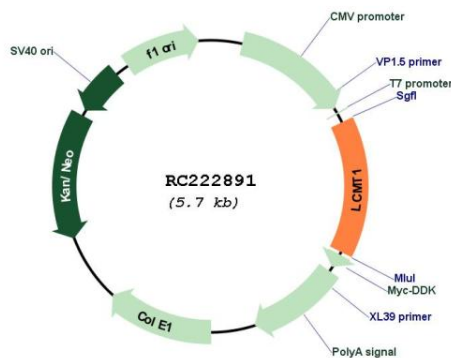
Cytogenetics: 16p12.1

Protein Pathways: Androgen and estrogen metabolism, Histidine metabolism, Selenoamino acid metabolism, Tyrosine metabolism

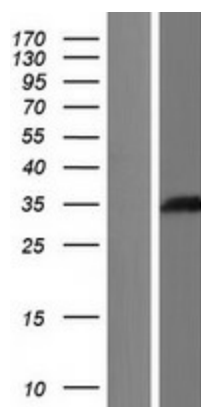
MW: 32 kDa

Gene Summary: LCMT1 catalyzes the methylation of the carboxyl group of the C-terminal leucine residue (leu309) of the catalytic subunit of protein phosphatase-2A (PPP2CA; MIM 176915) (De Baere et al., 1999 [PubMed 10600115]).[supplied by OMIM, Mar 2008]

Product images:



Circular map for RC222891



Western blot validation of overexpression lysate (Cat# [LY422323]) using anti-DDK antibody (Cat# [TA50011-100]). Left: Cell lysates from untransfected HEK293T cells; Right: Cell lysates from HEK293T cells transfected with RC222891 using transfection reagent MegaTran 2.0 (Cat# [TT210002]).