

Product datasheet for **RC222886**

FREM1 (NM_144966) Human Tagged ORF Clone

Product data:

Product Type:	Expression Plasmids
Product Name:	FREM1 (NM_144966) Human Tagged ORF Clone
Tag:	Myc-DDK
Symbol:	FREM1
Synonyms:	BNAR; C9orf143; C9orf145; C9orf154; MOTA; TILRR; TRIGNO2
Mammalian Cell Selection:	Neomycin
Vector:	pCMV6-Entry (PS100001)
E. coli Selection:	Kanamycin (25 ug/mL)
ORF Nucleotide Sequence:	>RC222886 representing NM_144966 Red=Cloning site Blue=ORF Green=Tags(s)

TTTTGTAATACGACTCACTATAGGGCGGCCGGAATTCGTCGACTGGATCCGGTACCGAGGAGATCTGCC
GCC**CGATCGCC**

ATGAACTCTGAGTTGGGGGGCTGCGAATGCCGTGCTGCTGCTCCTCTGGCCTGGGCCAGCCCCA
CCTTCATCAGCATCAACCGGGGTGAGGGTGATGAAGGGCCACTCTGCCTTCTGTGAGGAGATGACCT
GAAGTTTGCCATCCCTAAAGAGAAAGATGCCTGCAAAGTGAAGTTGTGATGAATGAGCCAATAACCCAG
AGGTTGGGAACTCACTCCACAGGTCTTTGACTGCCATTTCTCCCAACGAAGTCAAGTATGTTACA
ATGTTTGTCCAATTCTTGATGAAGACACAGTGAAGCTCAGACTTTACAGATTTACTGAAAGAGATACCTT
CATAGAACTTTTATCCTGTGGGTCTATCTCCTGGAACAGACTGTAACATCATCCATATGAGTAACAAT
GTGCTGGAGGTGCCTGAATCAATGGCTTGTCCCAAGCGATTGATAAAAACTGCTCAGATTCGATTATG
ATAGGATGGCTAGCCTGGAATGTACCGTCAGCCTGGACTGCGAGAAGTCCGGCTGCCAGCCATGGCCA
GATGGTTCTCGGGGAGCCTCGACCAGAAGAACCTCGTGGAGATCAGCCACACAGTTTTTCCAGAGTCC
CAACTGAGAGCAAACTGAAGTGTCCAGGTGGGAGCTGTACCCAGGATTAAGAAAAATAGGAAGCCTCA
AAGTGAGCTGTGAGGAGTTCCTGCTGATGGCCCTCGTTATCAGCATCTGGATCCCCCTTACCCAAACAT
TGATTATATCTCCATCCAACCTGGACCTCACAGATACCAGGAGCAAAATTTGTACAAGTCAGAGAGTGCG
TGGCTGCCTGTCTATATCAGAGCTGGAATCCGAATCAGATTCCAAAGGCTGCATTCATGGCCGTGTTTA
TTCTGGAAGTGGATCAGTTCATCCTGACCTCCTTGACTACATCAGTTCTGGACTGTGAAGAAGATGAGAC
CCCTAAACCCCTTGTGGTGTCAACATTACTAAAGCCCCGCTCCAGGGCTATGTGACTCACCTGTTGGAT
CACACCAGACCAATCTCCTCATTACCTGGAAAGATCTCAGTGACATGCAGATCGCCTATCAGCCACCAA
ACAGCAGCCATTCTGAGAGGAGACATGATGAGGTAGAATTGGAGGTATACGACTTCTTCTTTGAAAGGAG
TGCACCTATGACAGTCCACATCTCCATCAGAACAGCAGATACAAATGCCCCCGTGTATCCTGGAATACA
GGTCTGAGTCTCCTTGGGGGAGTCTCGAGCCATCACTTGGGAACAGTTTCAGTTGTCGACAATGACG
ACATTGGTGTCCGGTAGTACCGTGGTGGCTGCAGCATGGATGGCTGACTTTAAGAGGGGGAA
AGGTTTCTCTTACCGTGGCTGACCTCCAGGCTGGAGTTGTTGCTATCATCATGATGACAGCGACTCC



[View online >](#)

ACCAAAGACTTCGTGGTCTCCGGATATTTGATGGCCATCACAGCATCCGTCACAAATCCCCATCAACG
 TCTTGCCCAAAGATGATAGTCCCCGTTCTCATAACCAATGTTGTGATTGAACTGGAGGAGGGGCAGAC
 CATCCTGATCCAGGGATCCATGCTGCGAGCTTCAGATGTGGACGCCAGTATGACTACATCTTCTCAAT
 ATCACAAGCCTCCACAGGCTGGGGAGATCATGAAGAAGCCAGGGCCAGGACTGATAGGCTATCCTGTCC
 ATGGCTTCCTTCAGAGGGATTTGTTAATGGAATCATTATTATCGTCATTTTGGTGGAGAAATCTTTGA
 AGATTCTTTTCAATTTGTCCTGTGGGACAGCCATGAACCTCCAAATCTTCAGTGCCACAGGTGGCAACA
 ATCCATAAAGTCCAGTGGATGACCAGCTTCCAAAAGAGGCTCCTGGAGTTTCTCGGCATTTGGTTGTCA
 AGGAAACTGAGGTGGCCTATATAACTAAGAAACAGCTACATTTTATAGATTGAGAATCATATGACAGGGA
 GCTGGTCTACACAATAACTACTCCTCCATTTTTCTCCTTCAGCCACAGACACTTGGATGCTGGGAAATTA
 TTTATGGTGGACAGCATACCAAAGTAGTTAAGAATCCTACGGCCCTGGAGCTGAGGTCACTCAGC
 ATGCTGTGAACTATATGAAAGTGGCCTACATGCCCCCATGCAAGACATTGGTCCCATTGCAGAGATGT
 CCAGTTCACATTTTCTGTGAGTAAACCAACATGGCGGTACTTTCATGGGATCTGCTTTAACATTACAATC
 CTCCCAGTGGACAATCAAGTTCCTGAGGCTTCCCAACCCTCTGAAAGTACTGAGGGAGGTCAAAGCA
 TCATCAGCACAGAGCACATTCTAATTTCTGATGCAGATACCAAGCTGGACAATATTGACCTCTCCCTGCG
 GGAATTGCTCTGCACGGAAGGGTGGAGCTGAATGGATTTCTCTAAATTCAGGGGGCACATTTTCTTGG
 GCGCATCTCCATACCTTAAAAGTTAGGTATCAACATGATGGAAGTGAAGTTCTTCAGGATGACCTACTCT
 TGGAGGTACCGATGGCACAATTCAGCAGAATTTGACTACATGTTGAGGTATTCCTGTCAACAGTGA
 GCCACAGTCTTAAAGGCTGACCTCATGCCTGTCAATGCTCAGAGGGAGGAGAGGTGGTCACTCACC
 TCTGAATACATTTTGTACTGATGTGGACAGCGATAAAGTGAAGTTGATGTTTGTGATTGCTCGCGAAC
 CTCAGCATGGGGTGGTGGAGAGCTGGAGTCAAGTGGATCAGTTCTCTCAGAGAGATGTTATCTCAGA
 GGCCGTGACATACAAACACAGGTGGCGAGATTGGCCTGATGCCTTGTGTTGACACCATTACATTGGTG
 GTTTCGGATGGAGAGGCTGGCCCTTTTGTGAATGGCTGTTGCTACAATGGACCAATCCATCTGTTCCAC
 TTCATCGTCTTCCAGTGTATGATCTCAACATCAGGTATACCCAGTAGACAACCCAGCCATCCAT
 TGCAATAGGTCCCCTGTTTGTGATGAGGGCTGCTCAACAGCCCTTACTGTTAAACATTTGTCCGCC
 ACTGACCTGACACTGCAGCAGATGACTTGAATTTGTTTGGTTTCTCCTCCTCAGTTTGGCTACCTCG
 AAAATATACTCCCTTCTGTGGGTTTTGAAAAAGCAATATTGGCATAAGTATAGATTCAATTCAGTGAA
 AGACATGAACGCTTTTACATTAATAATGTGCAGTCCAGGCATCTGAGGATAGAACCAACTGCCGACCAG
 TTCACGGTGTACGTACAGATGGGAAGCATCACTCCTGGAGATACCATTTTCTATTATAATCAACCCCA
 CAAATGATGAAGCTCCTGACTTTGTAGTGCAGAATATTACTGTGTGTGAGGGTCAAGTAAAGAGCTGGA
 CTCTTCCATCATCAGCGCTGTGGACCTGGACATCCCCAGGATGCCCTGTGTTGAGCATCACTCAAAG
 CCACGCCATGGCCTCCTCATCGATAGGGGTTTTAGCAAAGACTTCTCTGAGAATAAGCAGCCAGCCAACC
 CTACCAGAAACATGCACCTGTTACAGCTTTTCCATGGAACCTCAAGACTGGAATGAGGTTGACGTA
 CATGCATGATGACTCAGAGAGCCTTGTGATGATTTTACAATCCAATTGTCAGATGGGAAACATAAGATA
 CTTAAAACATTTTCAAGTAGAGTCACTCCAGTTAATGATGAAAAACCAATGCTGAGCAAGAAGGCTGAAA
 TTGCAATGAATATGGGTGAAACTCGTATTATTTCCAGTGTCTTCTTCCAGCCATAGATGAAGACTCACC
 CAGGGAGAAGATTTACTATGATTTTAAAGGCTTCCCCAAAATGGGCAACTTCAGCTTAAAGTGGGAGG
 GACTGGGTTCTCTCTCCCCTGGCATGAAATGCACTCAGGAGGAAGTGGATCTGAACTTGTGAGATACA
 CACACACCGGGCAATGGATTCCAGAATCAAGATAGCTTACCTTCTACCTTTGGGATGGCAACAACAG
 GTCCCCGTCTTACTGTCAAATCACCATCAAGGACATGGAAAAAGGTGATATTGTCATCCTTACAAAA
 CCACTCGTGGTGTCTAAAGGTGATAGAGGTTTCTTAAACAACCACGCTCCTGGCTGTGGACGGAACAG
 ACAAGCCTGAGGAACTGCTCTATGTCATCACCTCCCCTCCGCGATATGGCCAGATCGAATATGTTCACTA
 TCCTGGAGTTCCCATACAAACTTCAGCCAAATGGATGTAGTGGGGCAGACAGTTTGTATGTACACAAG
 AGCAAGGTGACTGTCTCCAGTGCAGATTCAGATTCATCATCAGCAATGGACTGCGGACCGAGCAGGGG
 TGTTTGGATCACACTGGAGACTGTGGACAGAGCCCTGCCTGTGGTAACCAGGAACAAGGGGTTGAGACT
 GGCCCAAGGGGCGTGGCCTGCTTTCCCCTGACCTCCTTCAGCTGACCGACCCTGATACACCTGCGGAG
 AACCTCACCTTCTTGGTTCAGCTCCCCAGCATGGCCAGCTCTACCTGTGGGGACAGGGCTACTTC
 AACACAATTTACCCAGCAGGATGTGGACAGCAAGAATGTGGCCTATCGGCACTCAGGAGGGGACTCCCA
 GACTGACTGCTTTACTTTTATGAGGACAGATGGGACAAACCAAGGCTTTATTGTGAATGGGAGAGTGTGG
 GAAGAACCTGTTTTATTACCATTCAGGTAGACCAATTGGACAAAACAGCTCCTCGTATCACACTTTGC
 ATTTCCCCTTCTCAAGTGGGGCTCCTGAAAAATGGCTGCTACGGGATTTACATCACTTCCCCTGTTGAA
 GGCATCAGACCCTGACTGAGGACGATCAGATCATCTTAAAATTTTACAAGGCCCAAAACATGGACAT
 CTGGAGAACACAACAAGGTGAATTTATCCATGAGAAATTTAGCCAAAAGGACTTAAACAGTAAGACTA

TTCTTTACATCATAAACCCATCTTTGGAAGTAAATTCAGATACCGTGGAATTTCAAATCATGGACCCAC
AGGGAACTCGGCCACTCCTCAAATTTTGGAACTGAAGTGGTCTCATATTGAATGGTCACAGACCGAATAT
GAAGTCTGTGAGAATGTGGGTTTGTTCCTTGGAAATATCAGAAGGGGATATTCATGGACTCGGCT
TTGTGGGTATAAAGGTCAACCAAGTGTCACTGAGCTGCACTTGGAAAAGATTTACCCTGATTCATCTAACT
GATTCAGTTTGACCCAGGAATGTCAACTAAGATGTGGAATATAGCAATTACCTATGACGGATTAGAGGAA
GATGATGAGGTCTTTGAAGTAATTCTGAACTCCCCTGTGAATGCAGTTCTTGGCACAAGACAAAAGCTG
CAGTGAATTTTGGACTCAAAGGAGGACAATGCCATCCTTCATATTCCTCAACCAAAGCAAGCACAG
CACATGGGAGAAGGGCATTGGCATCTGCTGCCCCAGGGTCTTCTCATCCACCCTTCTGGTTCCCTT
CATCTGGAAAGAAGACCTCTTCCATCTTCCATGCAGCTAGCAGTCATCAGGGGAGACACCCTGCGGGCT
TTGATTCTACAGATCTTTCTCAAAGGAAGCTTAGGACCCGTGGGAATGGCAAAACAGTTCGTCCATCCTC
TGTTTATAGAAATGGAACAGACATCATCTATAATTATCATGGGATAGTTTCTTGAAGTGGAGGATGAC
AGTTTCCCAACTCACAAAAGGAAGGCCAAAGTATCCATCATTAGTCAGCCACAAAAGACAATCAAAGTGG
CAGAACTGCCTCAAGCAGATAAGGTGGAATCCACAAGTACTCACACTTCCCAGACAGGACCAGTTGCC
CTCATTTCCAAAGAACTGCACTCTGGAATTAAGGGACTCTTCCATTTTGAAGAAGGCATCCAGAAGCTG
TATCAGTGCAATGGGATCGCTGAAAGCCTGGAGTCCCAAACCAAGGATGTGGAAGACAAATCCTGTC
CAGCCGGTGGCACCAGCACTCAGGCTACTGTCACATCTTGATCACAGAGCAGAAAGGCACCTGGAATGC
GGTGCCTCAAGCTTGAGGGAACAATACCTGGGCAACCTTGTAAGTGTATTCTCCAGGCAGCACATGCGG
TGGCTCTGGGACATTGGTGGGAGAAAGTCTTTGGATAGGTTTGAACGACCAAGTGCATGCTGGCCACT
GGGAGTGGATCGGTGGTGAACCTGTTGCCTTACCAATGGGAGAAGAGGGCCCTCTCAACGCTCCAAGCT
TGGAAAGAGCTGTGTTTTGGTTCAAAGACAAGGGAATGGCAACAAAAGACTGTAGGAGAGCCAAACCT
CATAATTATGTGTGTTCCAGAAAATC

ACGCGTACGCGGCCGCTCGAGCAGAACTCATCTCAGAAGAGGATCTGGCAGCAAATGATATCCTGGATT
ACAAGGATGACGACGATAAGGTTTAA

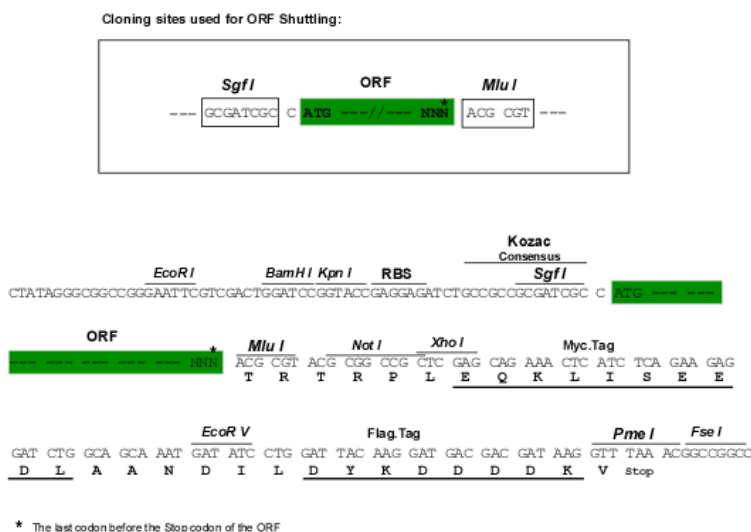
Protein Sequence: >RC222886 representing NM_144966
 Red=Cloning site Green=Tags(s)

MNSLSWGAANAVLLLLLLAWASPTFISINRQVVRVMKGHSAFLSGDDLKFAIPKEKDACKVEVMMNEPITQ
 RVGKLTQVQVDFCHFLPNEVKYVHNGCPILEDDEVKLRLYRFTERTDFIETFILWVYLLEPCNIIHMSNN
 VLEVPEFNGLSQAIDKNLLRFDYDRMASLECTVSLDTARTRLPAGQMVLGEPREEPRGDQPHSFFPES
 QLRAKLCPCGGSCPTGLKKIGSLKVSCEEFLLMGLRYQHLDPSPNIDYISIQDLDTDRSKIVYKSESA
 WLPVYIRAGIPNQIPKAAFMAVFILEVDQFILTSLTTSVLDCEEDETPKPLLVFNITKAPLQGYVTHLLD
 HTRPISSFTWKDLSDMQIAYQPPNSSHSERRHDEVELEVYDFFERSAPMTVHISIRTADTNAPRVSWNT
 GLSLEEGQSRAITWEQFQVVDNDDIGAVRLVTVGGLQHGWLTLRGGKGFLLTVADLQAGVVRVYHDDSDS
 TKDFVVFRIFDGHSIRHKFPINVLPKDDSPFLITNVVIELEEGQTILIQGSMLRASVDASDDYIFFN
 ITKPPQAGEIMKKPGPGLIGYPVHGFLQRDLFNGIYYRHFGGEIFEDSFQFVLWDSHEPPNLVSPQVAT
 IHITPVDQLPKEAPGVSRLVVKETEVAIYITKKQLHFIDSESYDRELVTITTPPFFSFshrhlDAGKL
 FMVDSIPKVVKNPTALELRSFTQHAVNYMKVAYMPPMQDIGPHCRDVQFTFVSNQHGGLHGICFNITI
 LPVDNQVPEAFTNPLKVTEGGQSIISTEHLISDADTKLDNIDLSLRELPLHGRVELNGFPLNSGGTFSW
 GDLHTLKVRYQHDGTEVLQDDLLLEVTDGTNSAEFVLHVEVFPVNDPEPVLKADLMPVMNCSEGGEVVIT
 SEYIFATDVSDNLKLMFVIAREPQHGVVRRAGVTVDQFSQRDVISEAVTYKHTGGEIGLMPCFDITLV
 VSDGEAGPFVNGCCYNGPNPSVPLHASFPVYDLNITVYPVDNQPPSIAIGPVFVDEGCSTALTVNHLA
 TDPDAADDLEFVLVSPQFGYLENILELPSVGFESNIGISIDSFQWKDMNAFHINVVQSRHLRIEPTADQ
 FTVVYVTDGKHHSLEIPFSIIINPTNDEAPDFVQNIITVCEGQMKELDSSIIISAVDLIDIPQDALLFSITQK
 PRHGLLIDRGFSKDFSENKQANPHQKHAPVHSFMELLKTGMRLTYMHDDSESLADDFTIQLSDGKHKI
 LKTIISVEVIVNDEKPMLSKKAIEAMNGETRIISSAILSAIDEDSPREKIYYVFERLPQNGQLKIGR
 DWVPLSPGMKCTQEEVDLNLRYTHTGAMDSQNQDSFTFYLDGNNRSPALDCQITIKDMEKGDIVILTK
 PLVYVSKGDRGFLTTTTLLAVDGTDKPEELLYVITSPPRYQIEYVHYPGVPITNFSQMDVVGQTVCYVHK
 SKVTVSSDRFRFIIISNGLRTEHGVEITLETVDRALPVVTRNKGLRLAQGAVGLLSPDLLQLTDPDPAE
 NLTFLLVQLPQHGQLYLWGTGLLQHNFTQQDVDSKNVAYRHSGGDSQTDCTFMATDGTNQGFIVNGRVW
 EEPVLFITIQVDQLDKTAPRITLLHSPSQVGLLKNQCYGIYITSRVLKASDPDTEDDQIIFKILQGPKHGH
 LENTTTGEFIHEKFSQKDLNSKILYIINPSLEVNSDTVEFQIMDPTGNSATPQILELKWSHIEWSQTEY
 EVCENVGLLPLEIIRRGYSMDSAFVGIKVNVQVSAAVGKDFTVIPSKLIQFDPGMSTKMWNIAITYDGLLE
 DDEVFEVILNSPVNAVLGTTKAAVKILDSKGGQCHPSYSSNQSKHSTWEKGIWHLLPPGSSSSTSGSF
 HLERRPLPSSMLAVIRGDTLRGFDSTLRSQRKLRTGNGKTVRPSVYRNGTDIINYHGVVSLKLEDD
 SFPTHKRKAKVSIISQPQKTIKVAELPQADKVESTTDSHFPRQDQLPSFPKNCTLELKLGFHFEEGIQKL
 YQCNGIAWKAWSPTKDVEDKSCPAGWHQHSYCHILITEQKGTWNAQAACREQYLGNLVTVFSRQHMR
 WLWDIGGRKSFWIGLNDQVHAGHWEWIGGEPVAFVFNRRGPSQRSKLGKSCVLRQKQKTKDCRRAK
 HNYVCSRKL

TRTRPLEQKLISEEDLAANDILDYKDDDDKV

Chromatograms: https://cdn.origene.com/chromatograms/mg2572_e08.zip

Restriction Sites: SgfI-MluI

Cloning Scheme:


ACCN: NM_144966

ORF Size: 6537 bp

OTI Disclaimer: The molecular sequence of this clone aligns with the gene accession number as a point of reference only. However, individual transcript sequences of the same gene can differ through naturally occurring variations (e.g. polymorphisms), each with its own valid existence. This clone is substantially in agreement with the reference, but a complete review of all prevailing variants is recommended prior to use. [More info](#)

OTI Annotation: This clone was engineered to express the complete ORF with an expression tag. Expression varies depending on the nature of the gene.

Components: The ORF clone is ion-exchange column purified and shipped in a 2D barcoded Matrix tube containing 10ug of transfection-ready, dried plasmid DNA (reconstitute with 100 ul of water).

- Reconstitution Method:**
1. Centrifuge at 5,000xg for 5min.
 2. Carefully open the tube and add 100ul of sterile water to dissolve the DNA.
 3. Close the tube and incubate for 10 minutes at room temperature.
 4. Briefly vortex the tube and then do a quick spin (less than 5000xg) to concentrate the liquid at the bottom.
 5. Store the suspended plasmid at -20°C. The DNA is stable for at least one year from date of shipping when stored at -20°C.

RefSeq: [NM_144966.7](#)

RefSeq Size: 7387 bp

RefSeq ORF: 6540 bp

Locus ID: 158326

UniProt ID: [Q5H8C1](#)

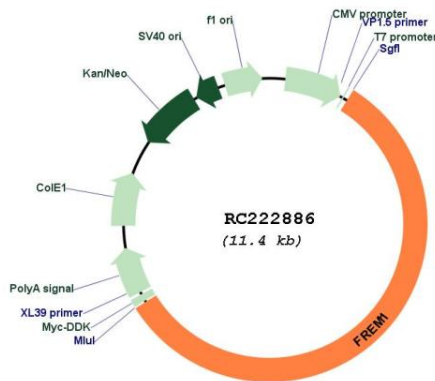
Cytogenetics: 9p22.3

Protein Families: Protease, Transmembrane

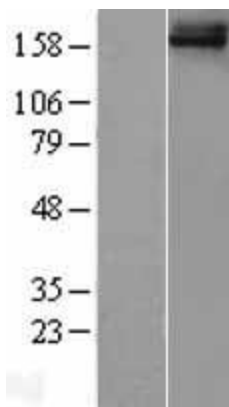
MW: 241.9 kDa

Gene Summary: This gene encodes a basement membrane protein that may play a role in craniofacial and renal development. Mutations in this gene have been associated with bifid nose with or without anorectal and renal anomalies. Alternatively spliced transcript variants encoding different isoforms have been described. PubMed ID 19940113 describes one such variant that initiates transcription within a distinct, internal exon; the resulting shorter isoform (named Toll-like/interleukin-1 receptor regulator, TILRR) is suggested to be a co-receptor of the interleukin 1 receptor family and may regulate receptor function and Toll-like receptor/interleukin 1 receptor signal transduction, contributing to the control of inflammatory response activation. [provided by RefSeq, Apr 2011]

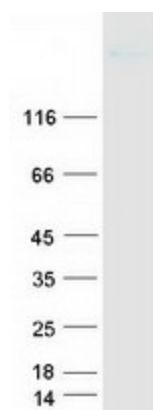
Product images:



Circular map for RC222886



Western blot validation of overexpression lysate (Cat# [LY403414]) using anti-DDK antibody (Cat# [TA50011-100]). Left: Cell lysates from untransfected HEK293T cells; Right: Cell lysates from HEK293T cells transfected with RC222886 using transfection reagent MegaTran 2.0 (Cat# [TT210002]).



Coomassie blue staining of purified FREM1 protein (Cat# [TP322886]). The protein was produced from HEK293T cells transfected with FREM1 cDNA clone (Cat# RC222886) using MegaTran 2.0 (Cat# [TT210002]).