

Product datasheet for RC222881

Corticotropin Releasing Factor Receptor 2 (CRHR2) (NM_001883) Human Tagged ORF Clone

Product data:

Product Type:	Expression Plasmids
Product Name:	Corticotropin Releasing Factor Receptor 2 (CRHR2) (NM_001883) Human Tagged ORF Clone
Tag:	Myc-DDK
Symbol:	Corticotropin Releasing Factor Receptor 2
Synonyms:	CRF-RB; CRF2; CRFR2; HM-CRF
Mammalian Cell Selection:	Neomycin
Vector:	pCMV6-Entry (PS100001)
E. coli Selection:	Kanamycin (25 ug/mL)
ORF Nucleotide Sequence:	>RC222881 ORF sequence Red=Cloning site Blue=ORF Green=Tags(s)

TTTTGTAATACGACTCACTATAGGGCGGCCGGAATTCGTCGACTGGATCCGGTACCGAGGAGATCTGCC
GCC**CGATCGCC**

ATGGACGCGGCACTGCTCCACAGCCTGCTGGAGGCCAACTGCAGCCTGGCGCTGGCTGAAGAGCTGCTCT
TGGACGGCTGGGGCCACCCCTGGACCCCGAGGGTCCCTACTCCTACTGCAACACGACCTTGACCAGAT
CGGAACGTGCTGGCCCCGACGCGCTGCCGAGCCCTCGTGGAGAGGCCGTGCCCGAGTACTTCAACGGC
GTCAAGTACAACACGACCCGGAATGCCTATCGAGAATGCTTGGAGAATGGGACGTGGGCCTCAAAGATCA
ACTACTCACAGTGTGAGCCATTTTGGATGACAAGCAGAGGAAGTATGACCTGCACTACCGCATCGCCCT
TGTGCTCAACTACCTGGGCCACTGCGTATCTGTGGCAGCCCTGGTGGCCGCTTCCCTGCTTTTCTGGCC
CTGCGGAGCATTGCTGTCTGCGGAATGTGATTACTGGAACCTCATCACCACCTTTATCCTGCGAAATG
TCATGTGGTTCTGCTGCAGCTCGTTGACCATGAAGTGCACGAGAGCAATGAGGTCTGGTGGCCGCTGCAT
CACCACCATCTTCAACTACTTCTGTTGACCAACTTCTTCTGGATGTTTGTGGAAGGCTGTACCTGCAC
ACGGCCATTGTCATGACCTACTCCACTGAGCGCCTGCGCAAGTGCCTCTTCTTTCATCGGATGGTGCA
TCCCTTCCCCATCATCGTCGCCTGGGCCATCGCAAGCTCTACTATGAGAATGAACAGTGTGTTTGG
CAAGGAGCCTGGCGACCTGGTGGACTACATCTACCAAGCCCCATCATTCTGTGCTCCTGATCAATTTCC
GTATTTCTGTTCAACATCGTCAGGATCCTAATGACAAAGTTACGGCGCTCCACCACATCCGAGACAAATCC
AGTACAGGAAGGAGTGAAGGCCACCCTGGTGTCTCTGCCCTCCTGGGCATCACCTACATGCTCTTCTT
CGTCAATCCCGGGGAGGACGACCTGTACAGATCATGTTTCACTTCTTCAACTCCTTCTGCAGTCGTTT
CAGGGTTTCTTCTGTCTGTCTTCTACTGCTTCTTCAATGGAGAGGTGCGCTCAGCCGTGAGGAAGAGGT
GGCACCCTGGCAGGACCATCACTCCCTTCGAGTCCCCATGGCCCGGCCATGTCCATCCCTACATCACC
CACACGGATCAGCTTCCACAGCATCAAGCAGACGGCCGCTGTG

ACGGCTACGGCGCCGCTCGAGCAGAACTCATCTCAGAAGAGGATCTGGCAGCAAATGATATCCTGGATT
ACAAGGATGACGACGATAAGGTTTAA



[View online »](#)

Protein Sequence: >RC222881 protein sequence
 Red=Cloning site Green=Tags(s)

MDAALLHSLLEANCSLALAEELLDGWPPLDPEGPYSYCNTTLDQIGTCWPRSAAGALVERPCPEYFNG
 VKYNTTRNAYRELENGTWASKINYSQCEPILDDKQRKYDLHYRIALVVNYLGHCVSVAALVAFLFLA
 LRSIRCLRNVIIHWNLITTFILRNVMWFLQLVDHEVHESNEVWCRCITTFNYFVVTNFFWMFVEGCYLH
 TAIVMTYSTERLRKCLFLFIGWCIPFPIIYAWAIGKLYENEQCWFGKEPGDLVDYIYQGP IILVLLINF
 VFLENIVRILMTKLRASSTSETIQYRKAVKATLVLLPLLGITIYMLFFVNPGEDDL SQIMFIYFNSFLQSF
 QGFFVSVFYCFNNGEVRSAVRKRWHRWQDHSLRVPARAMSIPTSPTRISFHSIKQTA AV

TRTRPLEQKLISEEDLAANDILDYKDDDDKV

Chromatograms: https://cdn.origene.com/chromatograms/mk6456_e11.zip

Restriction Sites: SgfI-MluI

Cloning Scheme:



ACCN: NM_001883

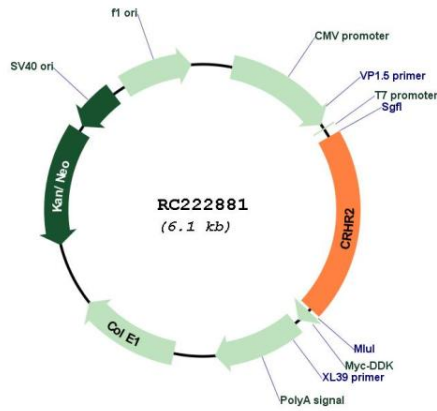
ORF Size: 1233 bp

OTI Disclaimer: Due to the inherent nature of this plasmid, standard methods to replicate additional amounts of DNA in E. coli are highly likely to result in mutations and/or rearrangements. Therefore, OriGene does not guarantee the capability to replicate this plasmid DNA. Additional amounts of DNA can be purchased from OriGene with batch-specific, full-sequence verification at a reduced cost. Please contact our customer care team at custsupport@origene.com or by calling 301.340.3188 option 3 for pricing and delivery.

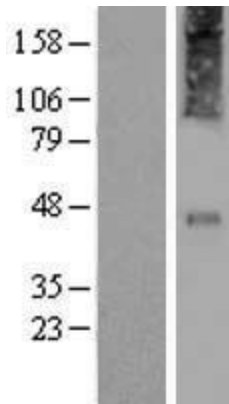
The molecular sequence of this clone aligns with the gene accession number as a point of reference only. However, individual transcript sequences of the same gene can differ through naturally occurring variations (e.g. polymorphisms), each with its own valid existence. This clone is substantially in agreement with the reference, but a complete review of all prevailing variants is recommended prior to use. [More info](#)

OTI Annotation:	This clone was engineered to express the complete ORF with an expression tag. Expression varies depending on the nature of the gene.
Components:	The ORF clone is ion-exchange column purified and shipped in a 2D barcoded Matrix tube containing 10ug of transfection-ready, dried plasmid DNA (reconstitute with 100 ul of water).
Reconstitution Method:	<ol style="list-style-type: none"> 1. Centrifuge at 5,000xg for 5min. 2. Carefully open the tube and add 100ul of sterile water to dissolve the DNA. 3. Close the tube and incubate for 10 minutes at room temperature. 4. Briefly vortex the tube and then do a quick spin (less than 5000xg) to concentrate the liquid at the bottom. 5. Store the suspended plasmid at -20°C. The DNA is stable for at least one year from date of shipping when stored at -20°C.
RefSeq:	<u>NM_001883.5</u>
RefSeq Size:	2998 bp
RefSeq ORF:	1236 bp
Locus ID:	1395
UniProt ID:	<u>Q13324</u>
Cytogenetics:	7p14.3
Protein Families:	Druggable Genome, Transmembrane
Protein Pathways:	Neuroactive ligand-receptor interaction
MW:	47.7 kDa
Gene Summary:	The protein encoded by this gene belongs to the G-protein coupled receptor 2 family, and the subfamily of corticotropin releasing hormone receptor. This receptor shows high affinity for corticotropin releasing hormone (CRH), and also binds CRH-related peptides such as urocortin. CRH is synthesized in the hypothalamus, and plays an important role in coordinating the endocrine, autonomic, and behavioral responses to stress and immune challenge. Studies in mice suggest that this receptor maybe involved in mediating cardiovascular homeostasis. Alternatively spliced transcript variants encoding different isoforms have been described for this gene.[provided by RefSeq, Jan 2011]

Product images:



Circular map for RC222881



Western blot validation of overexpression lysate (Cat# [LY419680]) using anti-DDK antibody (Cat# [TA50011-100]). Left: Cell lysates from untransfected HEK293T cells; Right: Cell lysates from HEK293T cells transfected with RC222881 using transfection reagent MegaTran 2.0 (Cat# [TT210002]).