

Product datasheet for **RC222870**

PREPL (NM_001042385) Human Tagged ORF Clone

Product data:

Product Type:	Expression Plasmids
Product Name:	PREPL (NM_001042385) Human Tagged ORF Clone
Tag:	Myc-DDK
Symbol:	PREPL
Synonyms:	CMS22
Mammalian Cell Selection:	Neomycin
Vector:	pCMV6-Entry (PS100001)
E. coli Selection:	Kanamycin (25 ug/mL)



[View online »](#)

ORF Nucleotide
Sequence:

>RC222870 representing NM_001042385
 Red=Cloning site Blue=ORF Green=Tags(s)

TTTTGTAATACGACTCACTATAGGGCGGCCGGAATTCGTCGACTGGATCCGGTACCGAGGAGATCTGCC
 GCCGCGATCGCC

ATGCAGCAGAAGACCAAATTATTCTCCAAGCTTTGAAGTATAGTATTCCTCACCTTGAAAAATGCATGC
 AGAAACAGCATTGAATCACTATAACTTCGCTGATCATTGTTACAATAGAATAAAAATTGAAAAAATCA
 CCTAACCAAGTGTCTTCAGAATAAACCCCAAGATATCAGAGTTAGCAAGAAACATCCCAAGTCGGAGCTTC
 TCATGTAAGGATCTTCAGCCTGTTAAACAAGAAAAAGAAAAACCCCTCCAGAAAACATGGATGCATTTG
 AAAAAAGTGAACAATAATTAGAAACACAGCCACAAGAAGAATAAGAAATCATCAATGTGGAAGTTAAACA
 TGGTGGTTTTGTTTATTACCAAGAAGTTGTTGCTTGGTTCGTTCCAAAGATGAAGAAGCAGACAATGAT
 AATTATGAAGTTTTATTCAATTTGGAGGAACCTAAGTTAGACCAGCCCTTCATTGATTGTATCAGAGTTG
 CTCAGATGAAAAATATGTGGTGCCTAAGATAAGAAGTGAAGTTCTGAAGCATCTACCTGTGTAATTAT
 AAAGCTCAGCGATCAGCCGTAATGGAAGCTTCTTTCCGAATGTGTCCAGTTTTGAATGGGTAAGGAC
 GAGGAAGATGAAGATGTTTTATTCTACACCTCCAGAGGAACCTTCGCTGTCATGACGTATATCGAGCCA
 CTTTTGGTGATAACAAACGTAATGAACGCTTTTACACAGAAAAAGACCCAAAGCTACTTTGTTTTCTTTA
 TCTTACAAAAGACAGTCGTTTCCCTACCATAAATATTATGAACAAGACTACTTCTGAAGTGTGGTTGATA
 GATGGCCTGAGCCCTTGGGACCCACCAGTACTTATCCAGAAGCGAATACATGGGGTCTTTACTATGTTG
 AACACAGAGATGATGAATTATACATTCTCACTAATGTTGGAGAACCTACAGAATTAAGTCCCTCCTTG
 GGCCTGTGGATTACATAATGGATACAAATTCGACCCAAAGAACTGCCCTTTCACTTTGCTCTCCAATA
 CGTCCCCAAAAATTACACATAACAAGTTTGCAGAAGGCAAACTGTTTGAGGAACTGGGCATGAAGACC
 CAATCACAAAGACTAGTCGCGTTTTACGTCTAGAAGCCAAAAGCAAGGATGGAAAAATTAGTCCAATGAC
 TGTTTTCCACAAAAGTACTCTGAGGACTTGCAGAAGAAACCTCTTGGTACATGTATATGGAGCTTAT
 GGAATGGATTTGAAAATGAATTTAGGCCTGAGAGGCGGGTCTGGTGGATGATGGATGATATTAGCAT
 ACTGCCATGTTGAGGTGGTGGTGGTGGTGGTGGTGGTGGTGGTGGTGGTGGTGGTGGTGGTGGTGGTGGT
 CAATGGCCTTGTGATTTAGAGGCTTGCATTAAGACGCTTCATGGCCAAGGCTTTTCTCAGCCAAGTCTA
 ACAACCCTGACTGCTTTCAGTGTGGAGGGTGGTGGTGGTGGTGGTGGTGGTGGTGGTGGTGGTGGTGGT
 TGAGAGCGGTGACTTTGGAGGCACCTTTCTGGATGTTCTCAACACCATGATGGACACTACACTTCTCT
 GACATTAGAAGAATTAGAAGAATGGGGAAATCCTTCATCTGATGAAAAACACAAGAACTACATAAAACGT
 TACTGTCCCTATCAAAATATTAACCTCAGCATTATCCTTCAATTCACATAACGGCATATGAAAACGATG
 AACGGGTACCTCTGAAAGGAATTGTAAGTTATACTGAGAACTCAAGGAAGCCATCGCGGAGCATGCTAA
 GGACACAGGTGAAGGCTATCAGACCCCTAATATTATTCTAGATATTCAGCCTGGAGGCAATCATGTAATT
 GAGGATTTCCAAAAAGATTACAGCCCAATTAATTCCTGTACGAGGAACTTGGACTTGACAGCACCA
 GTGTTTTGAGGATCTTAAGAAATACCTGAAATTC

ACGCGTACGCGGCCGCTCGAGCAGAACTCATCTCAGAAGAGGATCTGGCAGCAATGATATCCTGGATT
 ACAAGGATGACGACGATAAGGTTTAA

Protein Sequence: >RC222870 representing NM_001042385
 Red=Cloning site Green=Tags(s)

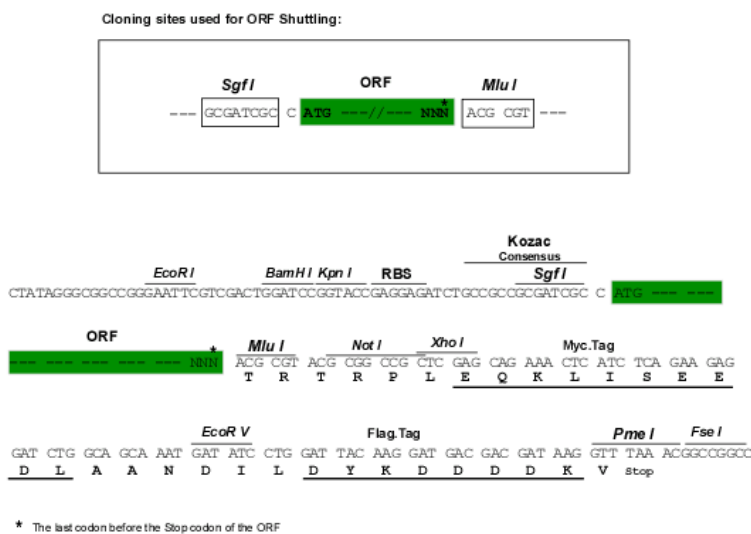
MQQKTKLFLQALKYSIPHLGKCMQKQHLNHYNFADHCYNRIKPKKYHLTKCLQNKPKISELARNIPSRSF
 SCKDLQPVKQENKPLPENMDAFEKVRKLETQPQEEYEIINVEVKHGGFVYYQEGCCLVRSKDEEADND
 NYEVLFNLEELKLDQPFIDCIRVAPDEKYVAAKIRTEDSEASTCVIIKLDQPVMEASFPNVSSFEWVKD
 EEDEDVLFYTFQRNLRCHDVYRATFGDNKRNERFYTEKDPSTYFVFLYLTkdSRFLTINIMNKTtSEVWLI
 DGLSPWDPVLIQKRIHGVLYYVEHRDDELYILTNVGEPTFKLPPWACGFIMDTNSDPKNCQFQLCSPI
 RPPKYTYTKFAEGKLFEEtGHEDPITKTSRVLRLAKSKDGKLVPMtVFHKtDSEDLQKKPLLvhVYGAY
 GMDLKMNFRPERRVLVDDGWILAYCHVRGGELGLQWHADGRLTKKLNGLADLEACIKTLHGQGFsQPSL
 TTLTAfSAGGVLAgALCNSNPELVRAVtLEAPFLDVLNTMMDTTLPLtLEELeeWGNPSSDEKHKNYIKR
 YCPYQNIKpQHYSIHITAYENDERVPLKGIvSYTEKLKEAIAEHAKDtGEGYQTPNIILDIQPGGNHVI
 EDShKKITaQIKFLYEELGLDStSVFEDLKkYLKf

TRTRPLEQKLISEEDLAANDILDYKDDDDKV

Chromatograms: https://cdn.origene.com/chromatograms/mk8072_a12.zip

Restriction Sites: SgfI-MluI

Cloning Scheme:



ACCN: NM_001042385

ORF Size: 1995 bp

OTI Disclaimer: The molecular sequence of this clone aligns with the gene accession number as a point of reference only. However, individual transcript sequences of the same gene can differ through naturally occurring variations (e.g. polymorphisms), each with its own valid existence. This clone is substantially in agreement with the reference, but a complete review of all prevailing variants is recommended prior to use. [More info](#)

OTI Annotation: This clone was engineered to express the complete ORF with an expression tag. Expression varies depending on the nature of the gene.

Components: The ORF clone is ion-exchange column purified and shipped in a 2D barcoded Matrix tube containing 10ug of transfection-ready, dried plasmid DNA (reconstitute with 100 ul of water).

Reconstitution Method:

1. Centrifuge at 5,000xg for 5min.
2. Carefully open the tube and add 100ul of sterile water to dissolve the DNA.
3. Close the tube and incubate for 10 minutes at room temperature.
4. Briefly vortex the tube and then do a quick spin (less than 5000xg) to concentrate the liquid at the bottom.
5. Store the suspended plasmid at -20°C. The DNA is stable for at least one year from date of shipping when stored at -20°C.

RefSeq: [NM_001042385.2](#), [NP_001035844.1](#)

RefSeq Size: 4636 bp

RefSeq ORF: 1998 bp

Locus ID: 9581

UniProt ID: [Q4J6C6](#)

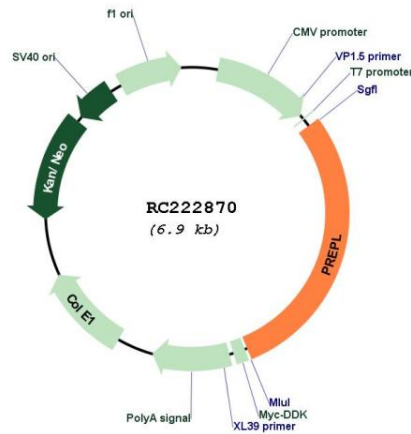
Cytogenetics: 2p21

Protein Families: Druggable Genome, Protease

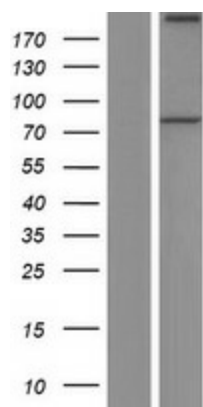
MW: 76.6 kDa

Gene Summary: The protein encoded by this gene belongs to the prolyl oligopeptidase subfamily of serine peptidases. Mutations in this gene have been associated with hypotonia-cystinuria syndrome, also known as the 2p21 deletion syndrome. Several alternatively spliced transcript variants encoding either the same or different isoforms have been described for this gene.[provided by RefSeq, Jan 2010]

Product images:



Circular map for RC222870



Western blot validation of overexpression lysate (Cat# [LY420864]) using anti-DDK antibody (Cat# [TA50011-100]). Left: Cell lysates from untransfected HEK293T cells; Right: Cell lysates from HEK293T cells transfected with RC222870 using transfection reagent MegaTran 2.0 (Cat# [TT210002]).