

Product datasheet for **RC222869**

PICK1 (NM_012407) Human Tagged ORF Clone

Product data:

Product Type:	Expression Plasmids
Product Name:	PICK1 (NM_012407) Human Tagged ORF Clone
Tag:	Myc-DDK
Symbol:	PICK1
Synonyms:	PICK; PRKCABP
Mammalian Cell Selection:	Neomycin
Vector:	pCMV6-Entry (PS100001)
E. coli Selection:	Kanamycin (25 ug/mL)
ORF Nucleotide Sequence:	>RC222869 ORF sequence Red=Cloning site Blue=ORF Green=Tags(s)

TTTTGTAATACGACTCACTATAGGGCGGCCGGAATTCGTCGACTGGATCCGGTACCGAGGAGATCTGCC
GCC**CGATCGCC**

ATGTTTGCAGACTTGATTATGACATCGAAGAGGATAAACTCGGAATCCCGACTGTGCCTGGGAAGGTGA
CCCTGCAGAAGGATGCTCAGAACCTGATCGGGATCAGCATTGGAGGAGGGGCCAGTACTGTCCCTGCCT
CTATATCGTCCAGGTATTTGACAACACCCAGCAGCCTTGGACGGCACAGTGGCAGCTGGCGATGAGATC
ACCGGTGTCAATGGCAGGTCAATCAAAGGGAAAATAAGGTGGAGGTGGCGAAGATGATTCAGGAGGTGA
AGGGGGAGGTGACCATCCACTACAACAAGCTGCAGGGCAGCCCAAGCAGGGCATGTCCCTGGACATTGT
GTTGAAGAAAGTCAAGCACCGGCTGGTGGAGAACATGAGTTCAGGGACCGCAGATGCTCTGGGCCTGAGC
CGGGCCATCCTGTGCAATGATGGCTTGTCAAGAGGCTAGAGGAGCTGGAGCGGACCGCTGAGCTATACA
AAGGGATGACGGAACACACCAAGAACCTCTACGGGCTTTTATGAGCTGTGCGAGACTACCGGGCCTT
TGGGGACGTGTTCTCCGTGATCGGGGTGCGGGAGCCCCAGCCAGCTGCGAGCGAGGCTTTTGTGAAGTTC
GCCGATGCCACCGCAGCATCGAGAAGTTCGGCATTCCGGCTTCTGAAAACCATCAAGCCGATGCTGACGG
ATCTGAACACGTACCTCAACAAAGCCATCCCGGACACTCGCTCACCATCAAGAAGTACCTGGACGTGAA
GTTTGAGTACCTGTCGTACTGCCTGAAGGTGAAGGAGATGGATGACGAGGAATACAGCTGCATTGCCCTA
GGCGAGCCCTTTACCGGTGAGCACCGGCAACTATGAGTACCGCCTGATCCTGCCGTGCCGACGGAGG
CGCGCGCCGCTTCTCCAGATGCGCAAGGATGTGCTGGAGAAGATGGAGCTGCTGGACCAGAAGCACGT
CCAGGACATCGTGTCCAGCTGCAGCGCCTCGTGTCCACCATGTCCAAGTACTACAACGACTGCTACGCA
GTGCTGCGGGATGCCGACGTCTTCCCCATCGAGGTAGACCTGGCGCACACCACATTGGCCTATGGCCTCA
ACCAGGAGGAGTTCACAGATGGGGAGGAGGAGGAGGAGGAAGACACGGCAGCTGGGGAGCCGTCCAG
GGATACACGAGGGGCTGCTGGGCCCTTGACAAGGGTGAAGCTGGTGTGACTCC

ACGCGTACGCGGCCGCTCGAGCAGAACTCATCTCAGAAGAGGATCTGGCAGCAATGATATCCTGGATT
ACAAGGATGACGACGATAAGGTTTAA



Protein Sequence: >RC222869 protein sequence
Red=Cloning site Green=Tags(s)

MFADLDYDIEEDKLGIPVPGKVTLQKDAQNLIGISIGGGAQYCPCLYIVQVFDNTPAALDGTVAAGDEI
 TGVNGRSIKGKTKVEVAKMIQEVKGEVTIHYNKLQADPKQGMSLDIVLKKVKHRLVENMSSGTADALGLS
 RAILCNDGLVKRLEELERTAELYKGMTEHTKNLLRAFVELSQTHRAFGDVFSVIGVREPQPAASEAFVKF
 ADAHRSIEKFGIRLLKTIKPLTDLNTYLNKAIPDTRLTIKKYLDVKFEYLSYCLKVKEMDDEEYSICAL
 GEPLYRVSTGNYEYRLILRCRQEARARFSQMRKDVLEKMELLDQKHVQDQIYVQLQRLVSTMSKYNDQCYA
 VLRDADVFPPIEVDLAHTTLAYGLNQEEFTDGEIEEEDTAAGEPSRDTRGAAGPLDKGGSWCDS

TRTRPLEQKLISEEDLAANDILDYKDDDDKV

Chromatograms: https://cdn.origene.com/chromatograms/mk6566_a08.zip

Restriction Sites: SgfI-MluI

Cloning Scheme:



* The last codon before the Stop codon of the ORF

ACCN: NM_012407

ORF Size: 1245 bp

OTI Disclaimer: The molecular sequence of this clone aligns with the gene accession number as a point of reference only. However, individual transcript sequences of the same gene can differ through naturally occurring variations (e.g. polymorphisms), each with its own valid existence. This clone is substantially in agreement with the reference, but a complete review of all prevailing variants is recommended prior to use. [More info](#)

OTI Annotation: This clone was engineered to express the complete ORF with an expression tag. Expression varies depending on the nature of the gene.

Components: The ORF clone is ion-exchange column purified and shipped in a 2D barcoded Matrix tube containing 10ug of transfection-ready, dried plasmid DNA (reconstitute with 100 ul of water).

Reconstitution Method:

1. Centrifuge at 5,000xg for 5min.
2. Carefully open the tube and add 100ul of sterile water to dissolve the DNA.
3. Close the tube and incubate for 10 minutes at room temperature.
4. Briefly vortex the tube and then do a quick spin (less than 5000xg) to concentrate the liquid at the bottom.
5. Store the suspended plasmid at -20°C. The DNA is stable for at least one year from date of shipping when stored at -20°C.

Note: Plasmids are not sterile. For experiments where strict sterility is required, filtration with 0.22um filter is required.

RefSeq: [NM_012407.4](#)

RefSeq Size: 2224 bp

RefSeq ORF: 1248 bp

Locus ID: 9463

UniProt ID: [Q9NRD5](#)

Cytogenetics: 22q13.1

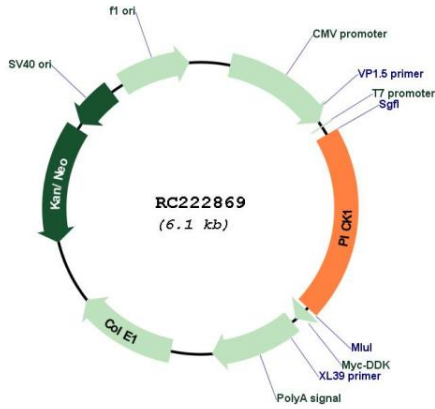
Domains: PDZ

Protein Families: Druggable Genome

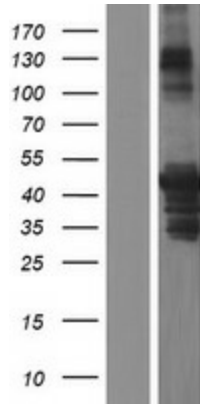
MW: 46.6 kDa

Gene Summary: The protein encoded by this gene contains a PDZ domain, through which it interacts with protein kinase C, alpha (PRKCA). This protein may function as an adaptor that binds to and organizes the subcellular localization of a variety of membrane proteins. It has been shown to interact with multiple glutamate receptor subtypes, monoamine plasma membrane transporters, as well as non-voltage gated sodium channels, and may target PRKCA to these membrane proteins and thus regulate their distribution and function. This protein has also been found to act as an anchoring protein that specifically targets PRKCA to mitochondria in a ligand-specific manner. Three transcript variants encoding the same protein have been found for this gene. [provided by RefSeq, Jul 2008]

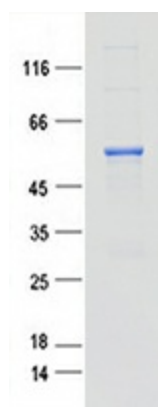
Product images:



Circular map for RC222869



Western blot validation of overexpression lysate (Cat# [LY422082]) using anti-DDK antibody (Cat# [TA50011-100]). Left: Cell lysates from untransfected HEK293T cells; Right: Cell lysates from HEK293T cells transfected with [RC222916] using transfection reagent MegaTran 2.0 (Cat# [TT210002]).



Coomassie blue staining of purified PICK1 protein (Cat# [TP322869]). The protein was produced from HEK293T cells transfected with PICK1 cDNA clone (Cat# RC222869) using MegaTran 2.0 (Cat# [TT210002]).