

Product datasheet for RC222866L1

LAP2 (TMPO) (NM_001032284) Human Tagged Lenti ORF Clone

Product data:

Product Type:	Expression Plasmids
Product Name:	LAP2 (TMPO) (NM_001032284) Human Tagged Lenti ORF Clone
Tag:	Myc-DDK
Symbol:	LAP2
Synonyms:	CMD1T; LAP2; LEMD4; PRO0868; TP
Mammalian Cell Selection:	None
Vector:	pLenti-C-Myc-DDK (PS100064)
E. coli Selection:	Chloramphenicol (34 ug/mL)
ORF Nucleotide Sequence:	The ORF insert of this clone is exactly the same as(RC222866).
Restriction Sites:	SgfI-MluI
Cloning Scheme:	

Cloning sites used for ORF Shuttling:



* The last codon before the Stop codon of the ORF.

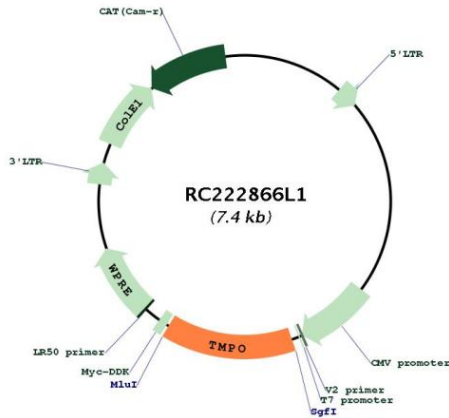
ACCN:	NM_001032284
ORF Size:	1035 bp



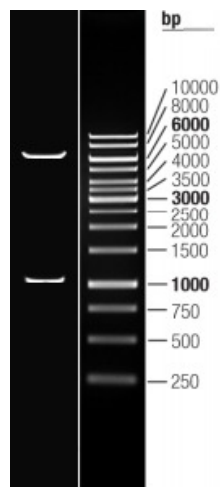
[View online >](#)

OTI Disclaimer:	The molecular sequence of this clone aligns with the gene accession number as a point of reference only. However, individual transcript sequences of the same gene can differ through naturally occurring variations (e.g. polymorphisms), each with its own valid existence. This clone is substantially in agreement with the reference, but a complete review of all prevailing variants is recommended prior to use. More info
OTI Annotation:	This clone was engineered to express the complete ORF with an expression tag. Expression varies depending on the nature of the gene.
Components:	The ORF clone is ion-exchange column purified and shipped in a 2D barcoded Matrix tube containing 10ug of transfection-ready, dried plasmid DNA (reconstitute with 100 ul of water).
Reconstitution Method:	<ol style="list-style-type: none">1. Centrifuge at 5,000xg for 5min.2. Carefully open the tube and add 100ul of sterile water to dissolve the DNA.3. Close the tube and incubate for 10 minutes at room temperature.4. Briefly vortex the tube and then do a quick spin (less than 5000xg) to concentrate the liquid at the bottom.5. Store the suspended plasmid at -20°C. The DNA is stable for at least one year from date of shipping when stored at -20°C.
RefSeq:	NM_001032284.1
RefSeq Size:	2374 bp
RefSeq ORF:	1038 bp
Locus ID:	7112
UniProt ID:	P42167
Cytogenetics:	12q23.1
Protein Families:	Stem cell - Pluripotency, Transmembrane
MW:	38.6 kDa
Gene Summary:	Through alternative splicing, this gene encodes several distinct LEM domain containing protein isoforms. LEM domain proteins include inner nuclear membrane and intranuclear proteins, and are involved in a variety of cellular functions including gene expression, chromatin organization, and replication and cell cycle control. The encoded alpha isoform is broadly diffuse in the nucleus and contains a lamin binding domain, while the beta and gamma isoforms are localized to the nuclear membrane and contain an HDAC3 interaction domain. The distinct isoforms may compete with each other when acting to chaperone other proteins and regulate transcription. [provided by RefSeq, Aug 2019]

Product images:



Circular map for RC222866L1



Double digestion of RC222866L1 using SgfI and MluI