



**Protein Sequence:** >RC222865 protein sequence  
 Red=Cloning site Green=Tags(s)

MWEWKICNSHGARPFAEPAGWEFVNLLRHHSFLIAPLCLSVPVSRPVLTLRSPGAQAAVGDLELHCEA  
 LRGSPPILYQFYHEDVTLGNSSAPSGGGASFNLSLTAEHSGNYSCEANNGLAQCSEAVPVSISGPDGYR  
 RDLMTAGVLWGLFGVLGFTGVALLLYALFHKISGESSATNEPRGASRPNPQEFYSSPTPMEELQPVYV  
 NVGSVDVDDVVYSQVWSMQQPESANIRTLLENKDSQVIYSSVKKS

TRTRPLEQKLISEEDLAANDILDYKDDDDKV

**Chromatograms:** [https://cdn.origene.com/chromatograms/mk6440\\_a01.zip](https://cdn.origene.com/chromatograms/mk6440_a01.zip)

**Restriction Sites:** SgfI-MluI

**Cloning Scheme:**

Cloning sites used for ORF Shuttling:



\* The last codon before the Stop codon of the ORF

**ACCN:** NM\_138738

**ORF Size:** 765 bp

**OTI Disclaimer:** The molecular sequence of this clone aligns with the gene accession number as a point of reference only. However, individual transcript sequences of the same gene can differ through naturally occurring variations (e.g. polymorphisms), each with its own valid existence. This clone is substantially in agreement with the reference, but a complete review of all prevailing variants is recommended prior to use. [More info](#)

**OTI Annotation:** This clone was engineered to express the complete ORF with an expression tag. Expression varies depending on the nature of the gene.

**Components:** The ORF clone is ion-exchange column purified and shipped in a 2D barcoded Matrix tube containing 10ug of transfection-ready, dried plasmid DNA (reconstitute with 100 ul of water).

**Reconstitution Method:**

1. Centrifuge at 5,000xg for 5min.
2. Carefully open the tube and add 100ul of sterile water to dissolve the DNA.
3. Close the tube and incubate for 10 minutes at room temperature.
4. Briefly vortex the tube and then do a quick spin (less than 5000xg) to concentrate the liquid at the bottom.
5. Store the suspended plasmid at -20°C. The DNA is stable for at least one year from date of shipping when stored at -20°C.

**Note:** Plasmids are not sterile. For experiments where strict sterility is required, filtration with 0.22um filter is required.

**RefSeq:** [NM\\_138738.3](#)

**RefSeq Size:** 2060 bp

**RefSeq ORF:** 767 bp

**Locus ID:** 79368

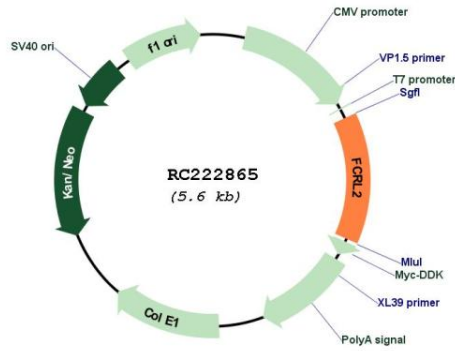
**Cytogenetics:** 1q23.1

**Protein Families:** Druggable Genome, Transmembrane

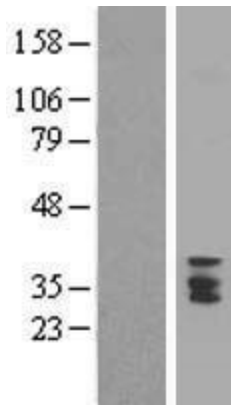
**MW:** 27.5 kDa

**Gene Summary:** This gene encodes a member of the immunoglobulin receptor superfamily and is one of several Fc receptor-like glycoproteins clustered on the long arm of chromosome 1. The encoded protein has four extracellular C2-type immunoglobulin domains, a transmembrane domain and a cytoplasmic domain that contains one immunoreceptor-tyrosine activation motif and two immunoreceptor-tyrosine inhibitory motifs. This protein may be a prognostic marker for chronic lymphocytic leukemia. Alternatively spliced transcript variants have been described, but their biological validity has not been determined. [provided by RefSeq, Apr 2009]

Product images:



Circular map for RC222865



Western blot validation of overexpression lysate (Cat# [LY408502]) using anti-DDK antibody (Cat# [TA50011-100]). Left: Cell lysates from untransfected HEK293T cells; Right: Cell lysates from HEK293T cells transfected with RC222865 using transfection reagent MegaTran 2.0 (Cat# [TT210002]).