

Product datasheet for RC222860

Sprouty 1 (SPRY1) (NM_199327) Human Tagged ORF Clone

Product data:

| | |
|---------------------------|---|
| Product Type: | Expression Plasmids |
| Product Name: | Sprouty 1 (SPRY1) (NM_199327) Human Tagged ORF Clone |
| Tag: | Myc-DDK |
| Symbol: | Sprouty 1 |
| Synonyms: | hSPRY1 |
| Mammalian Cell Selection: | Neomycin |
| Vector: | pCMV6-Entry (PS100001) |
| E. coli Selection: | Kanamycin (25 ug/mL) |
| ORF Nucleotide Sequence: | >RC222860 ORF sequence Red=Cloning site Blue=ORF Green=Tags(s) |

TTTTGTAATACGACTCACTATAGGGCGGCCGGAATTCGTCGACTGGATCCGGTACCGAGGAGATCTGCCGCCGCGATCGCC

ATGGATCCCCAAAATCAACATGGCAGTGGCAGTTCGTTAGTTGTGATCCAGCAGCCTTCTTTGGATAGCC
GTCAGAGATTAGACTATGAGAGAGAGATTACGCCTACTGCTATTTTGTCTTAGACCAGATCAAGGCCAT
AAGAGGCAGCAATGAATACACAGAAGGGCCTTCGGTGGTAAAAGACCTGCTCCTCGGACAGCACCAAGA
CAAGAAAAGCATGAAAGGACTCATGAAATCATACCAATTAATGTGAATAAATACTACGAGCACAGACACA
CAAGCCACCTGGGACATGCAGTACTCCAAGTAATGCCAGGGGCCCATTTTGTAGCAGATCAACCAGCAC
TGGAAAGTGCAGCCAGCTCTGGGAGCAACAGCAGTGCCTCTCTGAACAGGGACTGTTAGGAAGGTCACCA
CCAACCAGACCAGTCCCTGGTCAATAGGTCTGAAAGGGCAATCCGGACCCAGCCCAAGCAACTGATTGTGG
ATGACTTGAAGGGTTCCTTAAAAGAGGACCTGACACAGCAAGTTCAATTTGTGAACAGTGTGGGAAGTG
CAAGTGTGGAGAATGCACTGCTCCAGGACCCTACCATCCTGTTGGCCTGTAACCGGCAGTGCCTTTGC
TCTGCTGAGAGCATGGTGAATATGGAACCTGCATGTGCTTAGTCAAGGGCATCTTCTACCACTGCTCCA
ATGACGACGAAGGGGATTCCTATTCAGATAATCCTTGCTCCTGTTCAATCACACTGCTGCTCTAGATA
CCTGTGTATGGGAGCCATGTCTTTATTTTTACCTTGCTTACTCTGTTATCCTCCTGCTAAAGGATGCCTG
AAGCTGTGCAGGAGGTGTTATGACTGGATCCATCGCCAGGGTGCAGATGTAAGAACTCCAACACTGTCT
ATTGTAAGCTGGAGAGCTGCCCTCCCGGGTCAAGGTAACCATCA

ACGCGTACGCGGCCGCTCGAGCAGAAACTCATCTCAGAAGAGGATCTGGCAGCAAATGATATCCTGGATT
ACAAGGATGACGACGATAAGGTTTAA



[View online »](#)

Protein Sequence: >RC222860 protein sequence
 Red=Cloning site Green=Tags(s)

MDPQNQHSGSSLVVIQQPSLDSRQRLDYEREIQPTAILSLDQIKAIRGSNEYTEGPSVVKRPAPRTAPR
 QEKHERTHEIIPINVNNNYEHRHTSHLGHAVLPSNARGPILSRSTSTGSAASSGSNSASSEQGLLGRSP
 PTRPVPGHRSERAIARTQPKQLIVDDLKGLKEDLTQHKFICEQCGKCKGECTAPRTLPSCLACNRQCLC
 SAESMVEYGTCMCLVKGIFYHCSNDDEGDSYSDNPNPCSCSQSHCCSRYLCMGAMSLFLPCLLCYPPAKGCL
 KLCRRCYDWIHRPGCRCKNSNTVYCKLESCPSRGQGKPS

TRTRPLEQKLISEEDLAANDILDYKDDDDKV

Chromatograms: https://cdn.origene.com/chromatograms/mk6363_f10.zip

Restriction Sites: SgfI-MluI

Cloning Scheme:



ACCN: NM_199327

ORF Size: 957 bp

OTI Disclaimer: The molecular sequence of this clone aligns with the gene accession number as a point of reference only. However, individual transcript sequences of the same gene can differ through naturally occurring variations (e.g. polymorphisms), each with its own valid existence. This clone is substantially in agreement with the reference, but a complete review of all prevailing variants is recommended prior to use. [More info](#)

OTI Annotation: This clone was engineered to express the complete ORF with an expression tag. Expression varies depending on the nature of the gene.

Components: The ORF clone is ion-exchange column purified and shipped in a 2D barcoded Matrix tube containing 10ug of transfection-ready, dried plasmid DNA (reconstitute with 100 ul of water).

Reconstitution Method:

1. Centrifuge at 5,000xg for 5min.
2. Carefully open the tube and add 100ul of sterile water to dissolve the DNA.
3. Close the tube and incubate for 10 minutes at room temperature.
4. Briefly vortex the tube and then do a quick spin (less than 5000xg) to concentrate the liquid at the bottom.
5. Store the suspended plasmid at -20°C. The DNA is stable for at least one year from date of shipping when stored at -20°C.

RefSeq: [NM_199327.3](#)

RefSeq Size: 2380 bp

RefSeq ORF: 960 bp

Locus ID: 10252

UniProt ID: [O43609](#)

Cytogenetics: 4q28.1

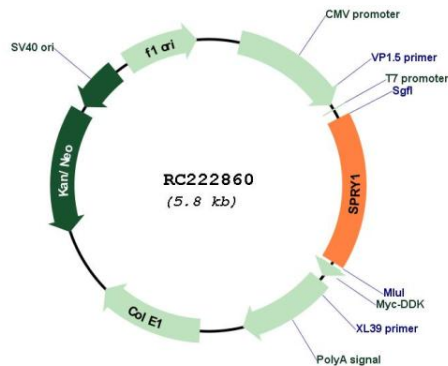
Protein Families: Druggable Genome

Protein Pathways: Jak-STAT signaling pathway

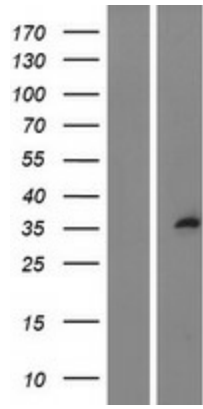
MW: 35.1 kDa

Gene Summary: May function as an antagonist of fibroblast growth factor (FGF) pathways and may negatively modulate respiratory organogenesis.[UniProtKB/Swiss-Prot Function]

Product images:



Circular map for RC222860



Western blot validation of overexpression lysate (Cat# [LY404622]) using anti-DDK antibody (Cat# [TA50011-100]). Left: Cell lysates from untransfected HEK293T cells; Right: Cell lysates from HEK293T cells transfected with RC222860 using transfection reagent MegaTran 2.0 (Cat# [TT210002]).

□

Coomassie blue staining of purified SPRY1 protein (Cat# [TP322860]). The protein was produced from HEK293T cells transfected with SPRY1 cDNA clone (Cat# RC222860) using MegaTran 2.0 (Cat# [TT210002]).