

Product datasheet for **RC222849**

GALNT8 (NM_017417) Human Tagged ORF Clone

Product data:

Product Type:	Expression Plasmids
Product Name:	GALNT8 (NM_017417) Human Tagged ORF Clone
Tag:	Myc-DDK
Symbol:	GALNT8
Synonyms:	GALNAC-T8
Mammalian Cell Selection:	Neomycin
Vector:	pCMV6-Entry (PS100001)
E. coli Selection:	Kanamycin (25 ug/mL)



[View online »](#)

ORF Nucleotide
Sequence:

>RC222849 representing NM_017417
Red=Cloning site Blue=ORF Green=Tags(s)

TTTTGTAATACGACTCACTATAGGGCGGCCGGAATTCGTCGACTGGATCCGGTACCGAGGAGATCTGCC
GCC**CGGATCGCC**

ATGATGTTTTGGAGGAACTCCCAAGCCCTCTTCATTGGGCTGACTCTGGCCATTGCTGTCAATCTCC
TTCTGGTATTTCTAGCAAGGGGACTTTACAAAACCTGTTTACGGGTGGTCTCCACAGGGAGCTTCCTTT
ACATCTGAATAAACGCTACGGGGCAGTGATAAAGAGACTCTCCCACTGGAGGTGGAATTGCAGGATCTG
AAAGAAAGTATGAAATTAGCTCTGAGGCAACAAGAAAATGTGAACAGCAGACTGAAGAGGGCGAAAGATG
AAGTACGCCCTCTTCTAAAGGCAATGGAACCAAGGTGAATGAGACAAAGAAGCAGCAAAACCCAAATGAA
ACTCTCCACACTCACAGCTTTTCAGGCAATGGGGCAGGATCTTTCTGAGGCCAGCAGAAGGGCGGCC
CAGGACCTCTCCGGAAGTTTGGTTACAACGCGTACCTCAGCAACCAGCTGCCTCTCAATCGCACCATCC
CCGACACGCGAGACTACAGATGTCTTCGGAAGACATATCCTTCCCACTCCCATCCCTCAGTGTCTATTCT
CATATTCGTGAATGAAGCTCTGTCCATTATACAACGGGCCATCACCAGTATCATCAACCGGACGCCCTCT
CGATTGTTGAAGGAAATCATCTTGGTGGATGATTCAGCTCAAAATGGAGAATAAAGGTACACTTGGATG
AGAAGATTAAGCTTTACAACCAGAAGTATCCAGGACTACTGAAAATAATACGGCATCCTGAAAGGAAAGG
TCTTGCTCAAGCCCGCAACACTGGCTGGGAAGCTGCCACAGCAGACGTGGTCGCCATCTTGGATGCTCAC
ATTGAAGTCAATGTTGGGTGGGCAGAGCCAATCTTGGCTCGGATTCAGGAGGACCGCACTGTGATTGTGT
CTCCTGTGTTTGACAACATTCGTTTTGACACCTCAAACCTGGATAAGTATGAACTGGCAGTTGATGGGTT
TAACTGGGAACCTGGTCCGCTACGATGCACTGCCACAAGCCTGGATTGATCTGCATGATGTCACTGCC
CCAGTGAAGAGTCCTTCAATCATGGGCATCCTGGCTGCTAACAGGCACTCCTGGGAGAGATCGGGTCTC
TGGATGGTGAATGCTCATCTATGGAGGAGAGAACGTGGAGCTTAGCCTGAGGGTGTGGCAGTGTGGAGG
GAAGGTCGAGATTTGCCCTGTTCCCGGATTGCCACCTAGAGAGACACCACAAGCCCTACGCCTTGGAT
CTCACCGTGCCTTGAAGCGCAATGCTCTGCGAGTGGCCGAAATCTGGATGGATGAGCACAAACACATGG
TCTACTTGGCCTGGAACATACCTCTCCAGAACTCTGGAATAGATTTTGGAGACGTTTCTTCCAGAATGGC
ACTCCGGGAAAAACTGAAATGTAAAACCTTTGACTGGTACCTGAAAAATGTTTATCCACTCTTGAAGCCA
CTCCACACCATCGTGGGCTATGGAAGAATGAAAAACCTATTGGATGAAAAATGCTGCTTGGATCAGGGAC
CCGTTCCAGGCAACACCCCATCATGTATTACTGCCATGAATTCAGCTCACAGAATGTCTACTATCACCT
AACTGGGGAGCTCTATGTGGGACAACTGATTGCAGAGGCCAGTGTAGTATCGCTGCCTGACAGACCTT
GGCAAGGCGGAGAAGCCACCTTAGAACCATGCTCCAAGGCAGCTAAGAATAGACTGCATATATATTGGG
ATTTTAAACCGGAGGAGCTGTCATAAACAGAGATACCAAGCGGTGTCTGGAGATGAAGAAGGATCTTTT
GGGTAGCCACGTCTTGTGCTCCAGACCTGTAGCACGCAAGTGTGGGAAATCCAGCACACTGTCCAGAGAC
TGGGGTCAGACCAACAGCCAG

AG**CGGACCG**ACGCGTACGCGGCCGCTCGAGCAGAACTCATCTCAGAAGAGGATCTGGCAGCAAATGATATCC
TGGATTACAAGGATGACGACGATAAGGTTTAA

Protein Sequence: >RC222849 representing NM_017417
Red=Cloning site Green=Tags(s)

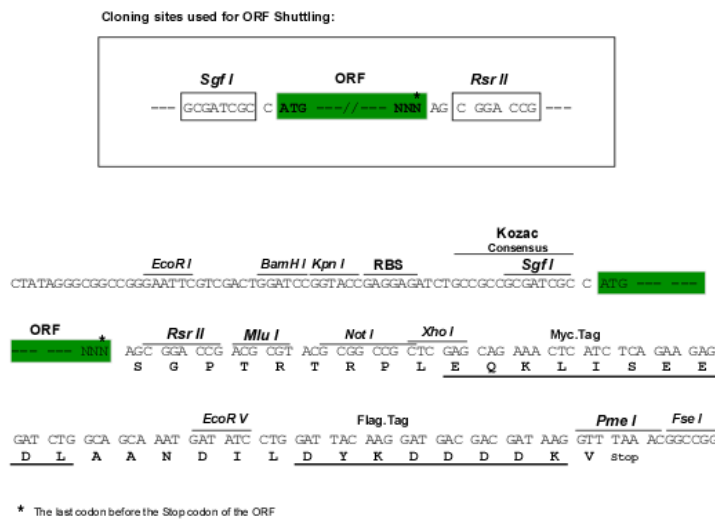
```
MMFWRKLPKALFIGLTLAIANLVLVSSKGTLQNLFTGGLHRELPLHLNKRYGAVIKRLSHLEVELQDL
KESMKLALRQQENVNSTLKRAKDEVPRLLKAMETKVNETKHKHTQMKLFPHSQFRQWGEDLSEAQQKAA
QDLFRKFGYNAYLSNQLPLNRTIPDTRDYRCLRKTYPQLPSLSVILIFVNEALSIIQRAITSIINRTPS
RLLEKEIILVDDFSSNGELKVHLDEKIKLYNQKYPGLLKIIRHPERKGLAQARNTGWEAATADVVAILDH
IEVNVGWAEPILARIQEDRTVIIVSPVFDNIRFDTFKLDKYELAVDGFNWELWCRYDALPQAWIDLHDVTA
PVKSPSIMGILAAANRHFLGEIGSLDGGMLIYGGENVELSLRVWQCGGKVEILPCSRIAHLERHHKPYALD
LTAALKRNALRVAEIWMDEHKHMVYLAWNIPLQNSGIDFGDVSSRMALREKLKCKTFDWYLNKVVPLPKP
LHTIVGYGRMNLLDENVCLDQGPVPGNTPIMYYCHEFSSQNVVYHLTGELYVGGQLIAEASASDRCLTDP
GKAEKPTLEPCSKAANKRLHIYWDFKPGGAVINRDTKRCLMCKDLLGSHVLVLQTCSTQVWEIQHTVRD
WGQTN SQ
```

SGPTRRRLEQKLISEEDLAANDILDYKDDDDKV

Chromatograms: https://cdn.origene.com/chromatograms/ja1407_h07.zip

Restriction Sites: SgfI-RsrII

Cloning Scheme:



ACCN: NM_017417

ORF Size: 1911 bp

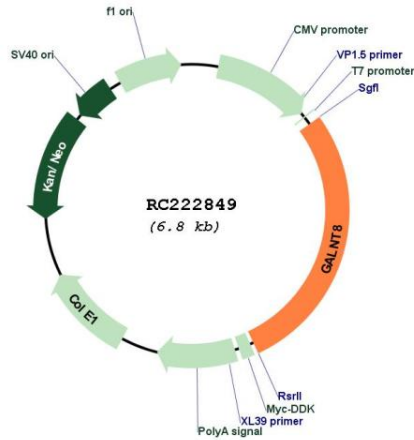
OTI Disclaimer: The molecular sequence of this clone aligns with the gene accession number as a point of reference only. However, individual transcript sequences of the same gene can differ through naturally occurring variations (e.g. polymorphisms), each with its own valid existence. This clone is substantially in agreement with the reference, but a complete review of all prevailing variants is recommended prior to use. [More info](#)

OTI Annotation: This clone was engineered to express the complete ORF with an expression tag. Expression varies depending on the nature of the gene.

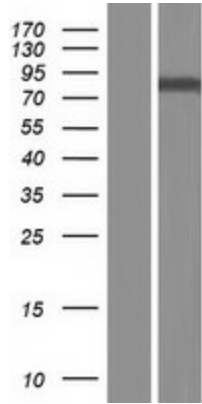
Components: The ORF clone is ion-exchange column purified and shipped in a 2D barcoded Matrix tube containing 10ug of transfection-ready, dried plasmid DNA (reconstitute with 100 ul of water).

Reconstitution Method:	<ol style="list-style-type: none">1. Centrifuge at 5,000xg for 5min.2. Carefully open the tube and add 100ul of sterile water to dissolve the DNA.3. Close the tube and incubate for 10 minutes at room temperature.4. Briefly vortex the tube and then do a quick spin (less than 5000xg) to concentrate the liquid at the bottom.5. Store the suspended plasmid at -20°C. The DNA is stable for at least one year from date of shipping when stored at -20°C.
RefSeq:	NM_017417.2
RefSeq Size:	2135 bp
RefSeq ORF:	1914 bp
Locus ID:	26290
UniProt ID:	Q9NY28
Cytogenetics:	12p13.32
Protein Families:	Transmembrane
Protein Pathways:	Metabolic pathways, O-Glycan biosynthesis
MW:	72.7 kDa
Gene Summary:	<p>This gene encodes a member of the UDP-N-acetyl-alpha-D-galactosamine:polypeptide N-acetylgalactosaminyltransferase (GalNAc-T) family of enzymes. GalNAc-Ts initiate mucin-type O-linked glycosylation in the Golgi apparatus by catalyzing the transfer of GalNAc to serine and threonine residues on target proteins. They are characterized by an N-terminal transmembrane domain, a stem region, a luminal catalytic domain containing a GT1 motif and Gal/GalNAc transferase motif, and a C-terminal ricin/lectin-like domain. GalNAc-Ts have different, but overlapping, substrate specificities and patterns of expression. [provided by RefSeq, Jul 2008]</p>

Product images:



Circular map for RC222849



Western blot validation of overexpression lysate (Cat# [LY413775]) using anti-DDK antibody (Cat# [TA50011-100]). Left: Cell lysates from untransfected HEK293T cells; Right: Cell lysates from HEK293T cells transfected with RC222849 using transfection reagent MegaTran 2.0 (Cat# [TT210002]).