

Product datasheet for **RC222847**

FAM162B (NM_001085480) Human Tagged ORF Clone

Product data:

Product Type: Expression Plasmids
Product Name: FAM162B (NM_001085480) Human Tagged ORF Clone
Tag: Myc-DDK
Symbol: FAM162B
Synonyms: bA86F4.2; C6orf189
Mammalian Cell Selection: Neomycin
Vector: pCMV6-Entry (PS100001)
E. coli Selection: Kanamycin (25 ug/mL)
ORF Nucleotide Sequence: >RC222847 representing NM_001085480
Red=Cloning site Blue=ORF Green=Tags(s)

TTTTGTAATACGACTCACTATAGGGCGGCCGGAATTCGTCGACTGGATCCGGTACCGAGGAGATCTGCC
GCC**CGATCGCC**

ATGCTCAGGGCGGTGGGAGCCTACTGCGCCTTGCCCGGGGCTAACAGTCCGCTGCGGCCCGGGGCGC
CTCTCGAGGCCACGCGACGGCCCGACCGGCTCTCCGCCCGGGGTCTCCCTGCTACTCCAGCGGCGG
GGCCCCAGCAATTCTGGCCCCAAGGTCACGGGGAGATTCACCGAGTCCCACGCAGCGCAGGCCCTTCG
CAGTTCGACAAGAAAATCTGCTGTGGACAGGGCTTTCAAATCGATGGAGGAGATCCCGCCTCGGATCC
CGCCAGAAATGATAGACACCGCAAGAAACAAAGCTCGAGTAAAGCTTGTACATAATGATTGGACTCAC
AATTATCGCTGCTTTGCTGTGATAGTGTAGCCAAAAGGGCTGTAGAACGACATGAATCCTTAACAAGT
TGGAACTTGGCAAGAAAGCTAAGTGGCGTGAAGAAGCTGCATTGGCTGCACAGGCTAAAGCTAAA

ACGCGTACGCGGCCGCTCGAGCAGAACTCATCTCAGAAGAGGATCTGGCAGCAAATGATATCCTGGATT
ACAAGGATGACGACGATAAGGTTTAA

Protein Sequence: >RC222847 representing NM_001085480
Red=Cloning site Green=Tags(s)

MLRAVGSLLRLRGLTVRCGPGAPLEATRRPAPALPPRGLPCYSSGGAPSNSGPQGHGEIHRVPTQRRPS
QFDKILLWTGRFKSMEEIPPRIPPEMIDTARNKARVKACYIMIGLTIIACFAVIVSAKRAVERHESLTS
WNLAKKAKWREEAALAAQAKAK

TRTRPLEQKLISEEDLAANDILDYKDDDDKV

Chromatograms: https://cdn.origene.com/chromatograms/mk8005_f09.zip



Restriction Sites: SgfI-MluI

Cloning Scheme:



ACCN: NM_001085480

ORF Size: 486 bp

OTI Disclaimer: The molecular sequence of this clone aligns with the gene accession number as a point of reference only. However, individual transcript sequences of the same gene can differ through naturally occurring variations (e.g. polymorphisms), each with its own valid existence. This clone is substantially in agreement with the reference, but a complete review of all prevailing variants is recommended prior to use. [More info](#)

OTI Annotation: This clone was engineered to express the complete ORF with an expression tag. Expression varies depending on the nature of the gene.

Components: The ORF clone is ion-exchange column purified and shipped in a 2D barcoded Matrix tube containing 10ug of transfection-ready, dried plasmid DNA (reconstitute with 100 ul of water).

Reconstitution Method:

1. Centrifuge at 5,000xg for 5min.
2. Carefully open the tube and add 100ul of sterile water to dissolve the DNA.
3. Close the tube and incubate for 10 minutes at room temperature.
4. Briefly vortex the tube and then do a quick spin (less than 5000xg) to concentrate the liquid at the bottom.
5. Store the suspended plasmid at -20°C. The DNA is stable for at least one year from date of shipping when stored at -20°C.

RefSeq: [NM_001085480.3](#)

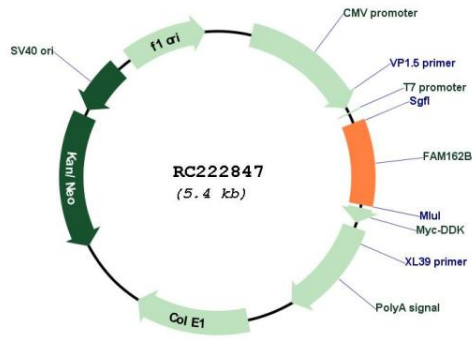
RefSeq Size: 1048 bp

RefSeq ORF: 489 bp

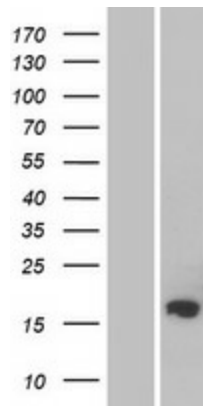
Locus ID: 221303

UniProt ID: Q5T6X4
 Cytogenetics: 6q22.1
 Protein Families: Transmembrane
 MW: 17.5 kDa

Product images:



Circular map for RC222847



Western blot validation of overexpression lysate (Cat# [LY421323]) using anti-DDK antibody (Cat# [TA50011-100]). Left: Cell lysates from untransfected HEK293T cells; Right: Cell lysates from HEK293T cells transfected with RC222847 using transfection reagent MegaTran 2.0 (Cat# [TT210002]).