

Product datasheet for **RC222838**

SR1 (SRI) (NM_198901) Human Tagged ORF Clone

Product data:

Product Type: Expression Plasmids
Product Name: SR1 (SRI) (NM_198901) Human Tagged ORF Clone
Tag: Myc-DDK
Symbol: SR1
Synonyms: CP-22; CP22; SCN; V19
Mammalian Cell Selection: Neomycin
Vector: pCMV6-Entry (PS100001)
E. coli Selection: Kanamycin (25 ug/mL)
ORF Nucleotide Sequence: >RC222838 representing NM_198901
Red=Cloning site Blue=ORF Green=Tags(s)

TTTTGTAATACGACTCACTATAGGGCGGCCGGAATTCGTCGACTGGATCCGGTACCGAGGAGATCTGCC
GCC**CGCATCGCC**

ATGCAAGTATGGAGGGCTCCCGGAGGGCTGCGTTTCCCGGACAACTCAGGATCCGCTGTATGGTTACT
TTGCTGCTGTAGCTGGACAGGATGGGCAGATAGATGCTGATGAATTGCAGAGATGCTGACACAGTCTGG
CATTGCTGGAGGATACAAACCTTTAACCTGGAGACTTGGCGGCTTATGGTTTCAATGCTGGATAGAGAT
ATGCTGGCACAATGGGTTTCAATGAATTTAAGAAGCTCTGGGCTGTACTGAATGGCTGGAGACAACACT
TTATCAGTTTTGACACTGACAGGAGTGGACAGTAGACCCACAAGAATTGCAGAAGGCCCTGACAACAAT
GGGATTTAGGTTGAGTCCCAGGCTGTGAATTCATTGCAAAACGATACAGCACCAATGGAAGATCACC
TTGCAGACTACATCGCCTGCTGCGTCAAAGTGGGGCTTTACAGACAGCTTTCGAAGACGGGATCTG
CTCAGCAAGGTGTTGTGAATTTCCCATATGATGATTTTCATTCAATGTGTCATGAGTGT

ACGCGTACGCGGCCGCTCGAGCAGAACTCATCTCAGAAGAGGATCTGGCAGCAAATGATATCCTGGATT
ACAAGGATGACGACGATAAGGTTTAA

Protein Sequence: >RC222838 representing NM_198901
Red=Cloning site Green=Tags(s)

MQYGGAPGGPAPFPQGTQDPLYGYFAAVAGQDQIDADELQRCLTQSGIAGGYKPFNLETCLRMVMSMLDRD
MSGTMGFNEFKELWAVLNGWRQHFISFDTRSGTVDPQELQKALTTMGFRLSPQAVNSIAKRYSTNGKIT
FDDYIACCVKLRALTDSFRRRDTAQGGVNFYDDFIQCVMSV

TRTRPLEQKLISEEDLAANDILDYKDDDDKV

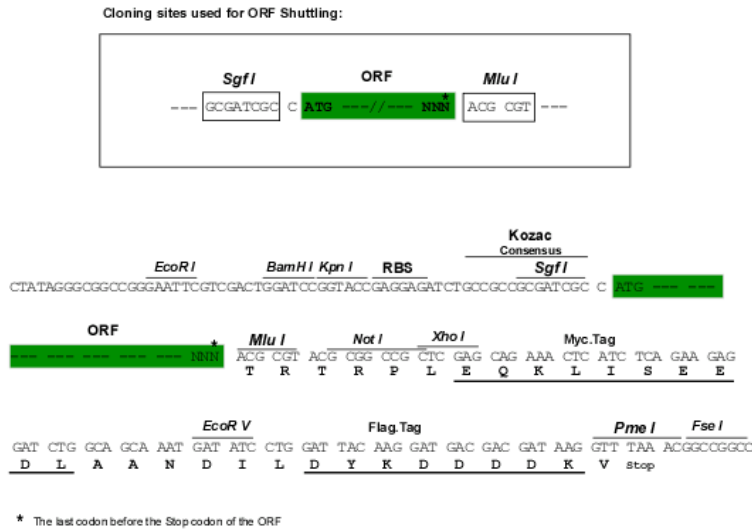
Chromatograms: https://cdn.origene.com/chromatograms/mk6113_b06.zip



[View online »](#)

Restriction Sites: SgfI-MluI

Cloning Scheme:



ACCN: NM_198901

ORF Size: 549 bp

OTI Disclaimer: Due to the inherent nature of this plasmid, standard methods to replicate additional amounts of DNA in E. coli are highly likely to result in mutations and/or rearrangements. Therefore, OriGene does not guarantee the capability to replicate this plasmid DNA. Additional amounts of DNA can be purchased from OriGene with batch-specific, full-sequence verification at a reduced cost. Please contact our customer care team at custsupport@origene.com or by calling 301.340.3188 option 3 for pricing and delivery.

The molecular sequence of this clone aligns with the gene accession number as a point of reference only. However, individual transcript sequences of the same gene can differ through naturally occurring variations (e.g. polymorphisms), each with its own valid existence. This clone is substantially in agreement with the reference, but a complete review of all prevailing variants is recommended prior to use. [More info](#)

OTI Annotation: This clone was engineered to express the complete ORF with an expression tag. Expression varies depending on the nature of the gene.

Components: The ORF clone is ion-exchange column purified and shipped in a 2D barcoded Matrix tube containing 10ug of transfection-ready, dried plasmid DNA (reconstitute with 100 ul of water).

- Reconstitution Method:**
1. Centrifuge at 5,000xg for 5min.
 2. Carefully open the tube and add 100ul of sterile water to dissolve the DNA.
 3. Close the tube and incubate for 10 minutes at room temperature.
 4. Briefly vortex the tube and then do a quick spin (less than 5000xg) to concentrate the liquid at the bottom.
 5. Store the suspended plasmid at -20°C. The DNA is stable for at least one year from date of shipping when stored at -20°C.

RefSeq: [NM_198901.1, NP_944490.1](#)

RefSeq Size: 2012 bp

RefSeq ORF: 552 bp

Locus ID: 6717

UniProt ID: [P30626](#)

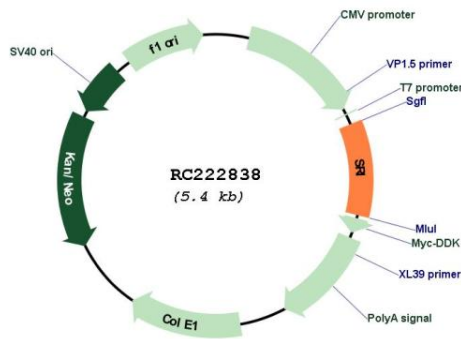
Cytogenetics: 7q21.12

Protein Families: Druggable Genome

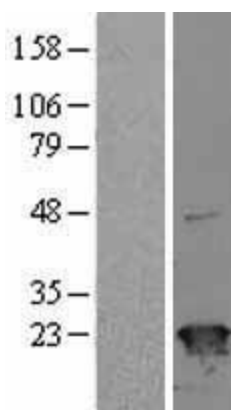
MW: 20.2 kDa

Gene Summary: This gene encodes a calcium-binding protein with multiple E-F hand domains that relocates from the cytoplasm to the sarcoplasmic reticulum in response to elevated calcium levels. In addition to regulating intracellular calcium homeostasis it also modulates excitation-contraction coupling in the heart. Alternative splicing results in multiple transcript variants encoding distinct proteins. Multiple pseudogenes exist for this gene. [provided by RefSeq, Mar 2012]

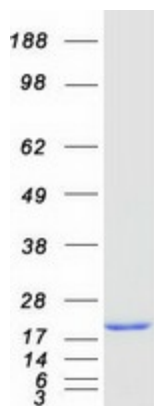
Product images:



Circular map for RC222838



Western blot validation of overexpression lysate (Cat# [LY403696]) using anti-DDK antibody (Cat# [TA50011-100]). Left: Cell lysates from untransfected HEK293T cells; Right: Cell lysates from HEK293T cells transfected with RC222838 using transfection reagent MegaTran 2.0 (Cat# [TT210002]).



Coomassie blue staining of purified SRI protein (Cat# [TP322838]). The protein was produced from HEK293T cells transfected with SRI cDNA clone (Cat# RC222838) using MegaTran 2.0 (Cat# [TT210002]).