

Product datasheet for **RC222831**

WFDC3 (NM_080614) Human Tagged ORF Clone

Product data:

Product Type:	Expression Plasmids
Product Name:	WFDC3 (NM_080614) Human Tagged ORF Clone
Tag:	Myc-DDK
Symbol:	WFDC3
Synonyms:	dj447F3.3; WAP14
Mammalian Cell Selection:	Neomycin
Vector:	pCMV6-Entry (PS100001)
E. coli Selection:	Kanamycin (25 ug/mL)
ORF Nucleotide Sequence:	>RC222831 representing NM_080614 Red=Cloning site Blue=ORF Green=Tags(s)

TTTTGTAATACGACTCACTATAGGGCGCCGGGAATTCGTCGACTGGATCCGGTACCGAGGAGATCTGCC
GCC**CGATCGCC**

ATGATGTTAAGCTGCCTCTTTCTTCTGAAGGCACTTCTTGCTCTTGGTCTCTGGAATCCTGGATAACTG
CAGGAGAACATGCAAAAGAGGGAGAATGCCCTCCCGATAAGAACCCATGCAAAGAGCTGTGCCAGGGTGA
TGAATTGTGCCGGCTGAACAGAAGTCTGCACCACAGGCTGTGGTCGGATCTGCCGAGACATTCCTAAG
GGGAGGAAAAGAGATTGCCCTAGGGTTATTCGAAACAATCCTGTTTGAAAAGGTGCATCACTGATAAGA
CATGTCCAGGTGTAAGAAATGCTGCACGCTTGGCTGCAACAAGAGCTGTGTAGTCCCAATCTCTAAACA
GAAGCTGGCAGAGTTTGGTGGTGAATGTCCCGCTGACCCCTTCCGTGTGAGGAGCTGTGTGATGGGGAT
GCATCCTGTCCCGAGGGGCATAAATGCTGCAGCACCGGCTGTGGCCGCACCTGCCTCGGAGACATTGAGG
GAGGGCGGGCGGTGATTGTCCAAAAGTTCTGGTGGGCTGTGCATTGTTGGCTGTGTGATGGATGAGAA
TTGTCAAGCTGGAGAAAAATGTTGCAAGTCAGGCTGTGGCCGCTTCTGTGTCCCACCAAGTCTGCCCA
AACTGACCATGAACCCCACTGGACTGTGAGGCTGATTCCGAATTAGAGATCCCGGTGCC

ACGCGTACGCGGCGCTCGAGCAGAACTCATCTCAGAAGAGGATCTGGCAGCAATGATATCCTGGATT
ACAAGGATGACGACGATAAGGTTTAA



[View online »](#)

Protein Sequence: >RC222831 representing NM_080614
Red=Cloning site Green=Tags(s)

MMLSCLFLLKALLALGSLESWITAGEHAKEGECPPDKNPCKELCQGDELCPAEQKCCTTGCGRICRDIPK
 GRKRDCPRVIRKQSLKRCITDKTCPGVKKCCTLGCNKSCVVPISKQKLAIEFGGCEPADPLPCEELCDGD
 ASCPQGHKCCSTGCGRTCLGDIEGGRGGDCPKVLVGLCIVGCVMDENCQAGEKCKKSGCGRFCVPPVLP
 KLTMPNPNWTVRSDELEIPVP

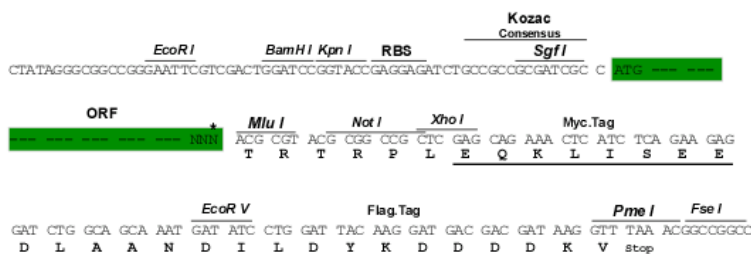
TRTRPLEQKLISEEDLAANDILDYKDDDDKV

Chromatograms: https://cdn.origene.com/chromatograms/mk6505_d05.zip

Restriction Sites: SgfI-MluI

Cloning Scheme:

Cloning sites used for ORF Shuttling:



* The last codon before the Stop codon of the ORF

ACCN: NM_080614

ORF Size: 693 bp

OTI Disclaimer: The molecular sequence of this clone aligns with the gene accession number as a point of reference only. However, individual transcript sequences of the same gene can differ through naturally occurring variations (e.g. polymorphisms), each with its own valid existence. This clone is substantially in agreement with the reference, but a complete review of all prevailing variants is recommended prior to use. [More info](#)

OTI Annotation: This clone was engineered to express the complete ORF with an expression tag. Expression varies depending on the nature of the gene.

Components: The ORF clone is ion-exchange column purified and shipped in a 2D barcoded Matrix tube containing 10ug of transfection-ready, dried plasmid DNA (reconstitute with 100 ul of water).

Reconstitution Method:

1. Centrifuge at 5,000xg for 5min.
2. Carefully open the tube and add 100ul of sterile water to dissolve the DNA.
3. Close the tube and incubate for 10 minutes at room temperature.
4. Briefly vortex the tube and then do a quick spin (less than 5000xg) to concentrate the liquid at the bottom.
5. Store the suspended plasmid at -20°C. The DNA is stable for at least one year from date of shipping when stored at -20°C.

RefSeq: [NM_080614.1](#), [NP_542181.1](#)

RefSeq Size: 1000 bp

RefSeq ORF: 696 bp

Locus ID: 140686

UniProt ID: [Q8IUB2](#)

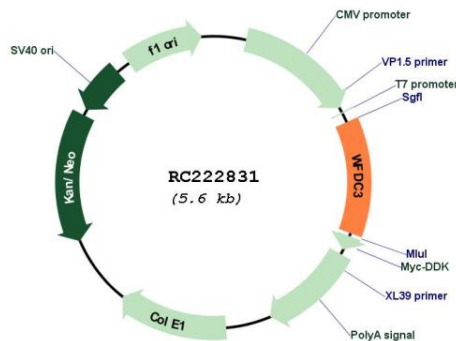
Cytogenetics: 20q13.12

Protein Families: Secreted Protein

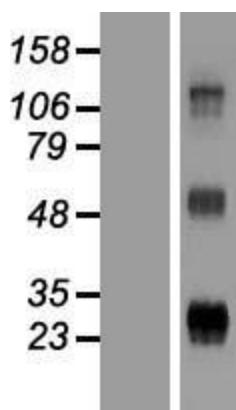
MW: 22 kDa

Gene Summary: This gene encodes a member of the WAP-type four-disulfide core (WFDC) domain family. The WFDC domain, or WAP signature motif, contains eight cysteines forming four disulfide bonds at the core of the protein, and functions as a protease inhibitor. The encoded protein contains four WFDC domains. Most WFDC genes are localized to chromosome 20q12-q13 in two clusters: centromeric and telomeric. This gene belongs to the telomeric cluster. Alternatively spliced transcript variants have been observed but their full-length nature has not been determined. [provided by RefSeq, Jul 2008]

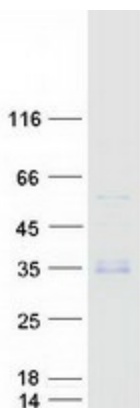
Product images:



Circular map for RC222831



Western blot validation of overexpression lysate (Cat# [LY409156]) using anti-DDK antibody (Cat# [TA50011-100]). Left: Cell lysates from untransfected HEK293T cells; Right: Cell lysates from HEK293T cells transfected with RC222831 using transfection reagent MegaTran 2.0 (Cat# [TT210002]).



Coomassie blue staining of purified WFDC3 protein (Cat# [TP322831]). The protein was produced from HEK293T cells transfected with WFDC3 cDNA clone (Cat# RC222831) using MegaTran 2.0 (Cat# [TT210002]).