

## Product datasheet for RC222824

### SLC25A3 (NM\_005888) Human Tagged ORF Clone

#### Product data:

Product Type:	Expression Plasmids
Product Name:	SLC25A3 (NM_005888) Human Tagged ORF Clone
Tag:	Myc-DDK
Symbol:	SLC25A3
Synonyms:	OK/SW-cl.48; PHC; PTP
Mammalian Cell Selection:	Neomycin
Vector:	pCMV6-Entry (PS100001)
E. coli Selection:	Kanamycin (25 ug/mL)
ORF Nucleotide Sequence:	>RC222824 representing NM_005888 Red=Cloning site Blue=ORF Green=Tags(s)

TTTTGTAATACGACTCACTATAGGGCGGCCGGAATTCGTCGACTGGATCCGGTACCGAGGAGATCTGCCGCCGCGATCGCC

ATGTTCTCGTCCGTGGCGCACCTGGCGGGCGAACCCCTTCAACACGCCACATCTGCAGCTGGTGCACG  
ATGGTCTCGGGACCTCCGCAGCAGCTCCCAGGGCCACGGCCAGCCCGCCGCTCGCAACCTGGC  
AGCCGCCCGGTGGAAGAGCAGTATAGCTGTGACTATGGATCTGGCAGATTCTTTATCCTTTGTGGACTT  
GGAGGAATTATTAGCTGTGGCACAACACATACAGCATTGGTTCCTCTAGATCTGGTTAAATGCAGAAATGC  
AGGTGGACCCCAAAAGTACAAGGGCATATTTAACGGATTCTCAGTTACACTTAAAGAGGATGGTGTTCG  
TGGTTTGGCTAAAGGATGGGCTCCGACTTTCCTTGGCTACTCCATGCAGGGACTCTGCAAGTTTGGCTTT  
TATGAAGTCTTTAAAGTCTGTATAGCAATATGCTTGGAGAGGAGAATACTTATCTCTGGCGCACATCAC  
TATATTTGGCTGCCTCTGCCAGTGTGAATTTCTTGTGACATTGCCCTGGCTCCTATGGAAGCTGCTAA  
GGTTTCAATCAAACCCAGCCAGGTTATGCCAACACTTTGAGGGATGCAGCTCCCAAAATGTATAAGGAA  
GAAGGCCATAAAGCATTCTACAAGGGGTTGCTCCTCTCTGGATGAGACAGATACCATACACCATGATGA  
AGTTCCGCTGCTTGAACGTACTGTTGAAGCACTGTACAAGTTTGTGGTTCCTAAGCCCCGAGTGAATG  
TTCAAAGCCAGAGCAGCTGGTTGAACATTTGTAGCAGTTACATAGCTGGAGTCTTTTGTGCAATTGTT  
TCTCACCTGCTGATTCTGTGGTATCTGTGTTGAATAAAGAAAAAGGTAGCAGTCTTCTGTGGTCTCA  
AGAGACTTGGATTTAAAGGTGTATGGAAGGGACTGTTTGGCCGATCATCATGATTGGTACCCTGACTGC  
ACTACAGTGGTTTATCTATGACTCCGTGAAGGTCTACTTCAGACTTCTCGCCCTCTCCACCCGAGATG  
CCAGAGTCTCTGAAGAAGAAGCTTGGTTAACTCAG

ACGCGTACGCGGCCGCTCGAGCAGAACTCATCTCAGAAGAGGATCTGGCAGCAATGATATCCTGGATT  
ACAAGGATGACGACGATAAGGTTAA



[View online »](#)



**Reconstitution Method:**

1. Centrifuge at 5,000xg for 5min.
2. Carefully open the tube and add 100ul of sterile water to dissolve the DNA.
3. Close the tube and incubate for 10 minutes at room temperature.
4. Briefly vortex the tube and then do a quick spin (less than 5000xg) to concentrate the liquid at the bottom.
5. Store the suspended plasmid at -20°C. The DNA is stable for at least one year from date of shipping when stored at -20°C.

**RefSeq:** [NM\\_005888.3](#)

**RefSeq Size:** 1688 bp

**RefSeq ORF:** 1089 bp

**Locus ID:** 5250

**UniProt ID:** [Q00325](#)

**Cytogenetics:** 12q23.1

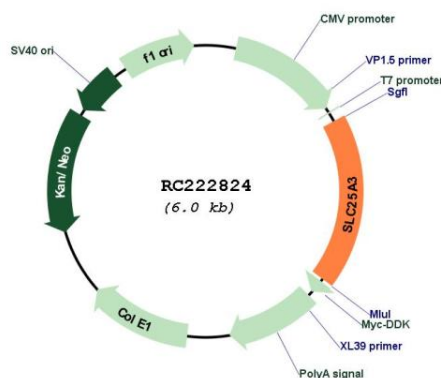
**Domains:** mito\_carr

**Protein Families:** Transmembrane

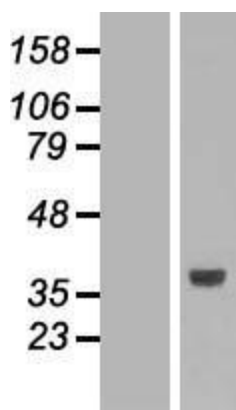
**MW:** 40.09 kDa

**Gene Summary:** The protein encoded by this gene catalyzes the transport of phosphate into the mitochondrial matrix, either by proton cotransport or in exchange for hydroxyl ions. The protein contains three related segments arranged in tandem which are related to those found in other characterized members of the mitochondrial carrier family. Both the N-terminal and C-terminal regions of this protein protrude toward the cytosol. Multiple alternatively spliced transcript variants have been isolated. [provided by RefSeq, Jul 2008]

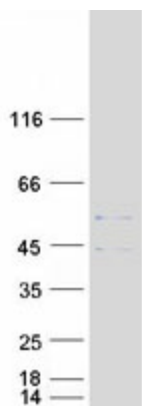
### Product images:



Circular map for RC222824



Western blot validation of overexpression lysate (Cat# [LY417005]) using anti-DDK antibody (Cat# [TA50011-100]). Left: Cell lysates from untransfected HEK293T cells; Right: Cell lysates from HEK293T cells transfected with RC222824 using transfection reagent MegaTran 2.0 (Cat# [TT210002]).



Coomassie blue staining of purified SLC25A3 protein (Cat# [TP322824]). The protein was produced from HEK293T cells transfected with SLC25A3 cDNA clone (Cat# RC222824) using MegaTran 2.0 (Cat# [TT210002]).