

Product datasheet for RC222822L1

Ancient ubiquitous protein 1 (AUP1) (NM_181575) Human Tagged Lenti ORF Clone

Product data:

Product Type:	Expression Plasmids
Product Name:	Ancient ubiquitous protein 1 (AUP1) (NM_181575) Human Tagged Lenti ORF Clone
Tag:	Myc-DDK
Symbol:	Ancient ubiquitous protein 1
Mammalian Cell Selection:	None
Vector:	pLenti-C-Myc-DDK (PS100064)
E. coli Selection:	Chloramphenicol (34 ug/mL)
ORF Nucleotide Sequence:	The ORF insert of this clone is exactly the same as(RC222822).
Restriction Sites:	Sgfl-Mlul
Cloning Scheme:	

Cloning sites used for ORF Shuttling:



* The last codon before the Stop codon of the ORF.

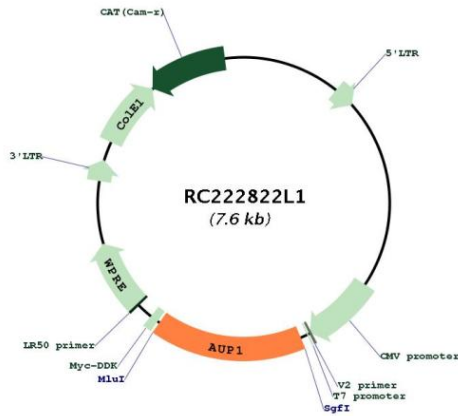
ACCN:	NM_181575
ORF Size:	1230 bp



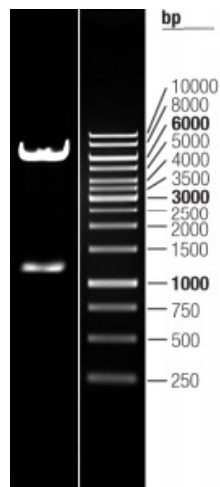
[View online »](#)

OTI Disclaimer:	The molecular sequence of this clone aligns with the gene accession number as a point of reference only. However, individual transcript sequences of the same gene can differ through naturally occurring variations (e.g. polymorphisms), each with its own valid existence. This clone is substantially in agreement with the reference, but a complete review of all prevailing variants is recommended prior to use. More info
OTI Annotation:	This clone was engineered to express the complete ORF with an expression tag. Expression varies depending on the nature of the gene.
Components:	The ORF clone is ion-exchange column purified and shipped in a 2D barcoded Matrix tube containing 10ug of transfection-ready, dried plasmid DNA (reconstitute with 100 ul of water).
Reconstitution Method:	<ol style="list-style-type: none">1. Centrifuge at 5,000xg for 5min.2. Carefully open the tube and add 100ul of sterile water to dissolve the DNA.3. Close the tube and incubate for 10 minutes at room temperature.4. Briefly vortex the tube and then do a quick spin (less than 5000xg) to concentrate the liquid at the bottom.5. Store the suspended plasmid at -20°C. The DNA is stable for at least one year from date of shipping when stored at -20°C.
RefSeq:	NM_181575.2
RefSeq Size:	1561 bp
RefSeq ORF:	1233 bp
Locus ID:	550
UniProt ID:	Q9Y679
Cytogenetics:	2p13.1
Protein Families:	Druggable Genome, Transmembrane
MW:	45.6 kDa
Gene Summary:	The protein encoded this gene is involved in several pathways including quality control of misfolded proteins in the endoplasmic reticulum and lipid droplet accumulation. Lipid droplets are organelles in the cytoplasm that store neutral lipids such as cholesterol esters and triglycerides to prevent the overabundance of free cholesterol and fatty acids in cells, but also to act as storage for other metabolic processes, such as membrane biogenesis. Reduced expression of this gene results in reduced lipid droplet clustering, a function that is dependent on ubiquitination of the protein. This protein contains multiple domains including a hydrophobic N-terminal domain, an acetyltransferase domain, a ubiquitin-binding CUE domain, and a UBE2B2-binding domain (G2BR). Alternative splicing results in multiple transcript variants. [provided by RefSeq, Nov 2014]

Product images:



Circular map for RC222822L1



Double digestion of RC222822L1 using SgfI and MluI